

Background

The following funding has been provided to assist the recovery of Whenua Māori from Cyclone Gabrielle in Tairāwhiti and Hawke's Bay:

- **Sediment and Debris Management Fund:** \$30 million to help manage sediment and debris on Whenua Māori affected by Cyclone Gabrielle in Tairāwhiti and Hawke's Bay.
- **Woody Debris Fund:** \$2 million for short to medium term measures that limit the damage by further movement of woody debris from catchment systems on Whenua Māori affected by Cyclone Gabrielle in Tairāwhiti and the Hawke's Bay.

Sediment and Debris Management Fund

	Allocation	Committed	Pipeline	Remaining
TOTAL	\$30.00m	\$2.66m	\$26.33m	\$1.01m

Removal of Woody Debris Fund

	Allocation	Committed	Pipeline	Remaining
TOTAL	\$2.00m	\$2.00m	\$0m	\$0m

Summary

- Seven projects to support the clean-up of whenua Māori have now been approved (with a combined value of \$4.658m). The largest contract value is \$2.000m. The average contract value is \$0.665m.
- Demand for funding for sediment and debris management is strong, with 35 applications still in development (with a combined value of \$26.331m) and all allocated funds are expected to be committed as further applications from collectives are expected in the future.
- The \$2m allocation for the removal of woody debris from whenua Māori has been committed. Engagement with Landowners has identified significant unmet demand for funding support for the removal of woody debris.

Tairāwhiti

Projects Funded

Two Tairāwhiti projects have been approved this month through the Sediment and Debris Management Fund (a combined value of \$1.061m):

- The Proprietors of Whangara B5 and the Proprietors of Pakarae A & Other Blocks has been supported with \$0.365m to purchase the necessary machinery, tools, resources, and manpower to enable them to access the impacted zones of their whenua to clear silt and sediment and restore productivity.
- Matatiki Partnership (Waiomatatini C & Wairoa 1A Trust AND Proprietors of Ahikouka A6B) has been funded \$0.173m to remove sediment and debris from 63 hectares of prime flat land buried in silt, shale, and rocks. All pastures, fences and water systems are currently buried.

Pipeline

- The allocation for the management of woody debris in catchments on whenua Māori was fully committed last month.
- There are **15** projects for the management of sediment and debris on whenua Māori currently in the pipeline, with an estimated combined value of **\$16.084m**. This figure still includes an application in development from Te Tumu Paeroa for \$13.0m. Two of these projects (with a combined value of \$0.237m) have been reviewed by the Regional Advisory Group and are being forwarded for decision to the Investment Subcommittee of Te Puni Kōkiri.

Unmet Demand

- Iwi and Māori landowners have indicated there is still a need for woody debris support and funding. The Ministerial Inquiry into Land Use appointees are currently in Tairāwhiti meeting with industry, local government and mana whenua, regarding recovery activities, one of which is identifying next steps for woody debris.
- To the north of Tokomaru Bay on the Mangahauini river there is still a debris dam made up of woody debris that is a safety concern as it is in the pathway into the community. The shortfall of funding for the current clean up in Waihora and Waingaromia rivers in Te Karaka also remains an issue for the community.
- As the Gisborne District Council's commercial funding for sediment and debris clean-up is still active, the Whenua Māori Service is collaborating with the Council to ensure that owners of general land within our priority communities have access to these funds.

Hawke's Bay

Projects Funded

Two projects have been approved this month in Hawke's Bay through the Sediment and Debris Management Fund (a combined value of \$1.534m)

- Te Awahohonu Forest Trust has been funded \$1.437m to reimburse the costs of silt and debris removal already undertaken on Tarawera Station and for future removal of sediment and debris on Tarawera Station, Gwavas Station and Te Awahohonu Forest.
- Warren Allison has been funded \$0.097m to remove sediment and debris from a 1.62 hectare Māori freehold land block. The entire land block was left covered in 1.5- 3.0 meters of silt and debris. The debris completely destroyed three homes, animals and a fruit orchard.

Pipeline

There are **20 projects** currently in the pipeline, with an estimated combined value of **\$10.247m**. Two applications are for whenua located in Wairoa. One of the applications in development is from Te Tumu Paeroa for \$3.0m. Two of the pipeline projects (with a combined value of \$1.128m) have been reviewed by the Regional Advisory Group and will now be forwarded to the Investment Subcommittee of Te Puni Kōkiri.

- The allocation for the management of woody debris in catchments on whenua Māori was fully committed last month.

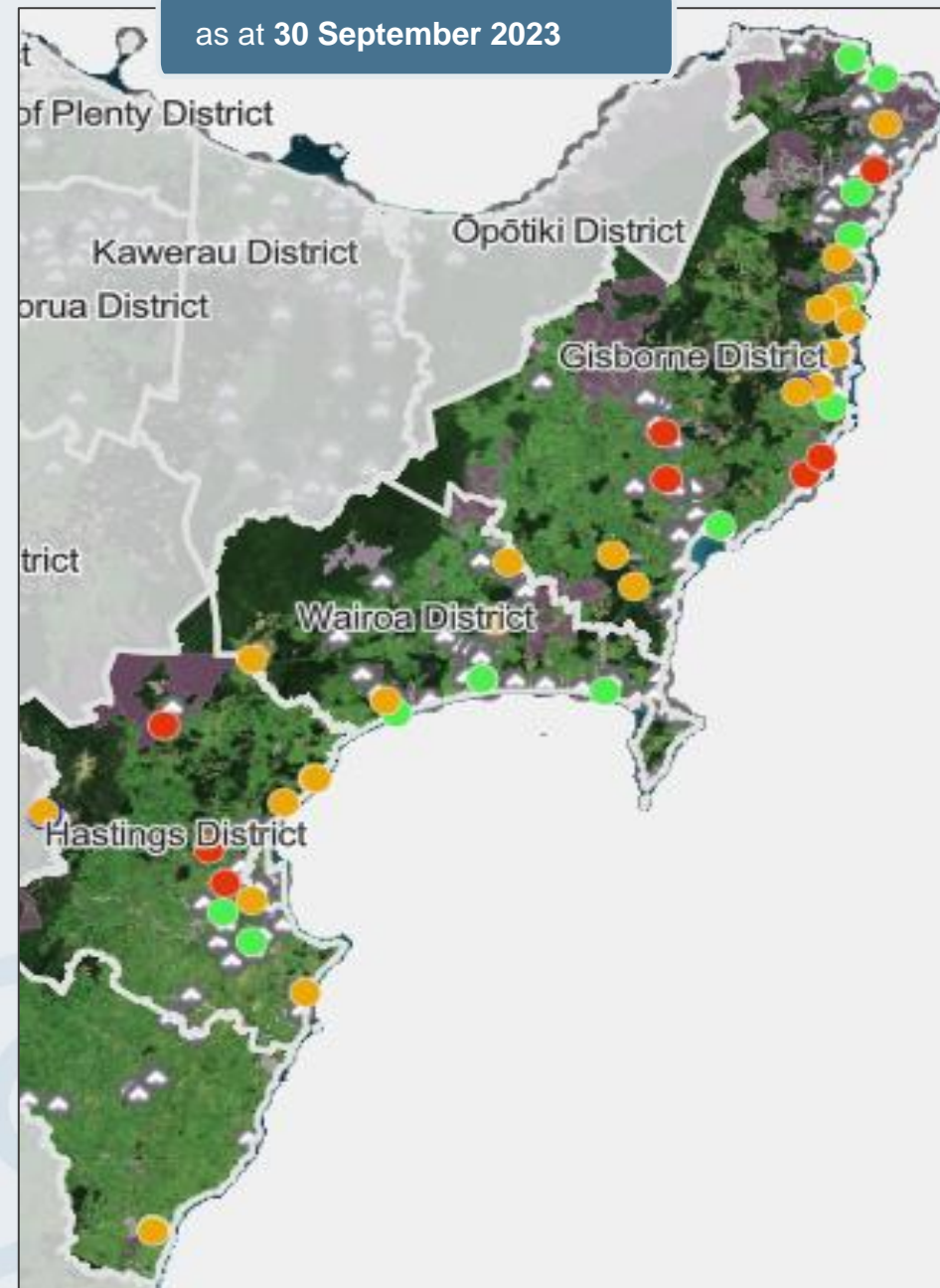
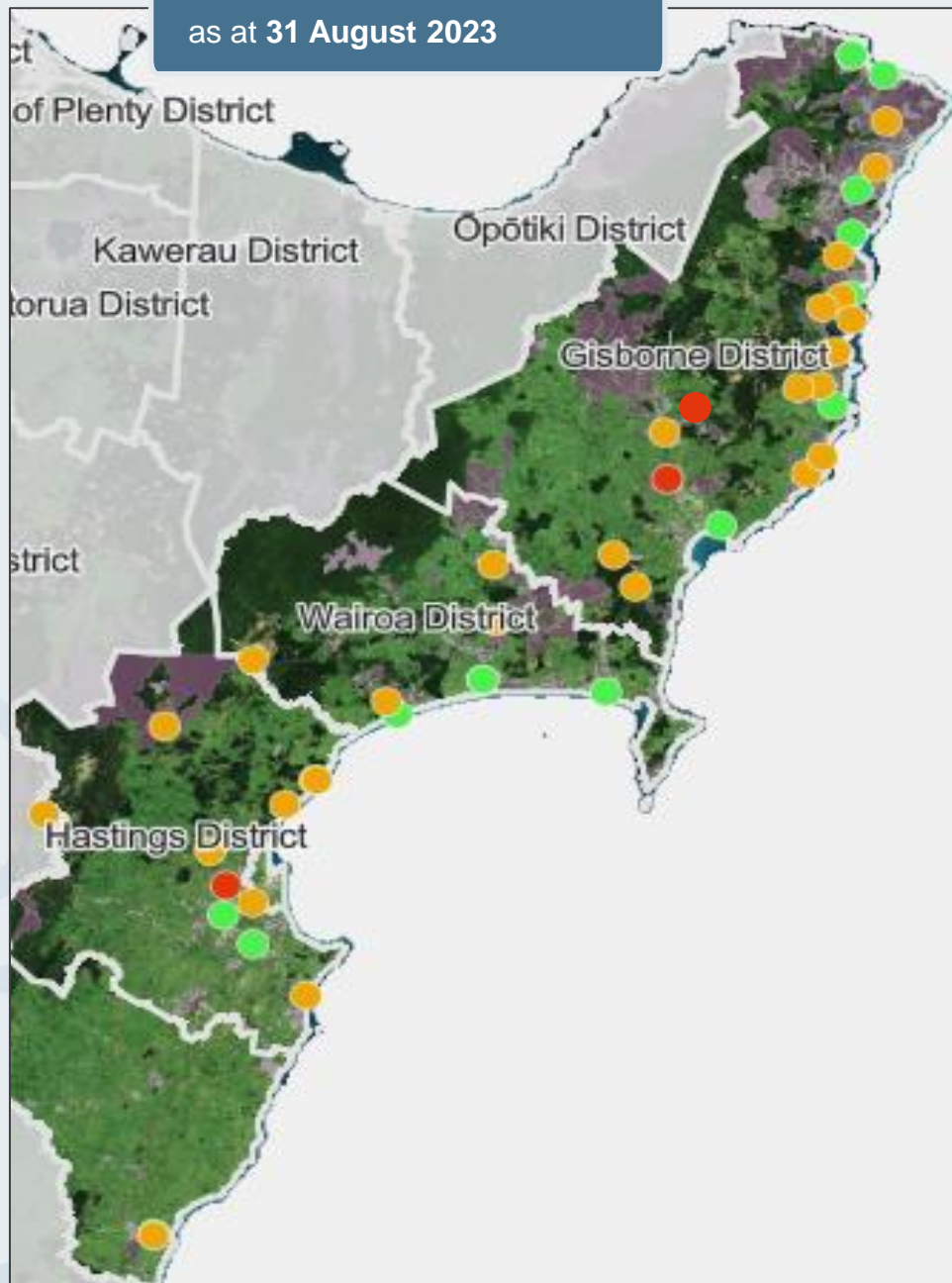
Unmet demand

Work continues with the owners of land blocks classified as category 2A or 3 as part of the Future of Severely Affected Locations workstream to understand future land use options. Some landowners are working as a collective to develop applications for sediment and debris management funding. Together with the additional complexity of land categorisation, this has delayed the development of some funding applications

Distribution of Engagement and Support for Funding Applications

The whenua Māori Land blocks that have submitted applications and are impacted by Cyclone Gabrielle have been mapped over the Hawke's Bay and Tairāwhiti regions using Tōku Whenua.

- The Whenua Māori Service has been holding drop-in clinics each fortnight (12 held to date), which will now take place each week due to increased demand. The drop-in clinics provide an opportunity for Māori landowners to work with kaimahi on their applications for funding. The locations of community engagement hui as shown in the map (●).
- There are 35 projects in the pipeline. There are 17 applications in the pipeline that have progressed to the point that exact land blocks have been identified. Nine of these are in Tairāwhiti and 8 in Hawke's Bay. These are shown in the map (●). Projects approved for funding are also shown (●).



KEY

- Community engagement hui
- Pipeline for Sediment & Debris
- Approved for Sediment & Debris and for Woody Debris