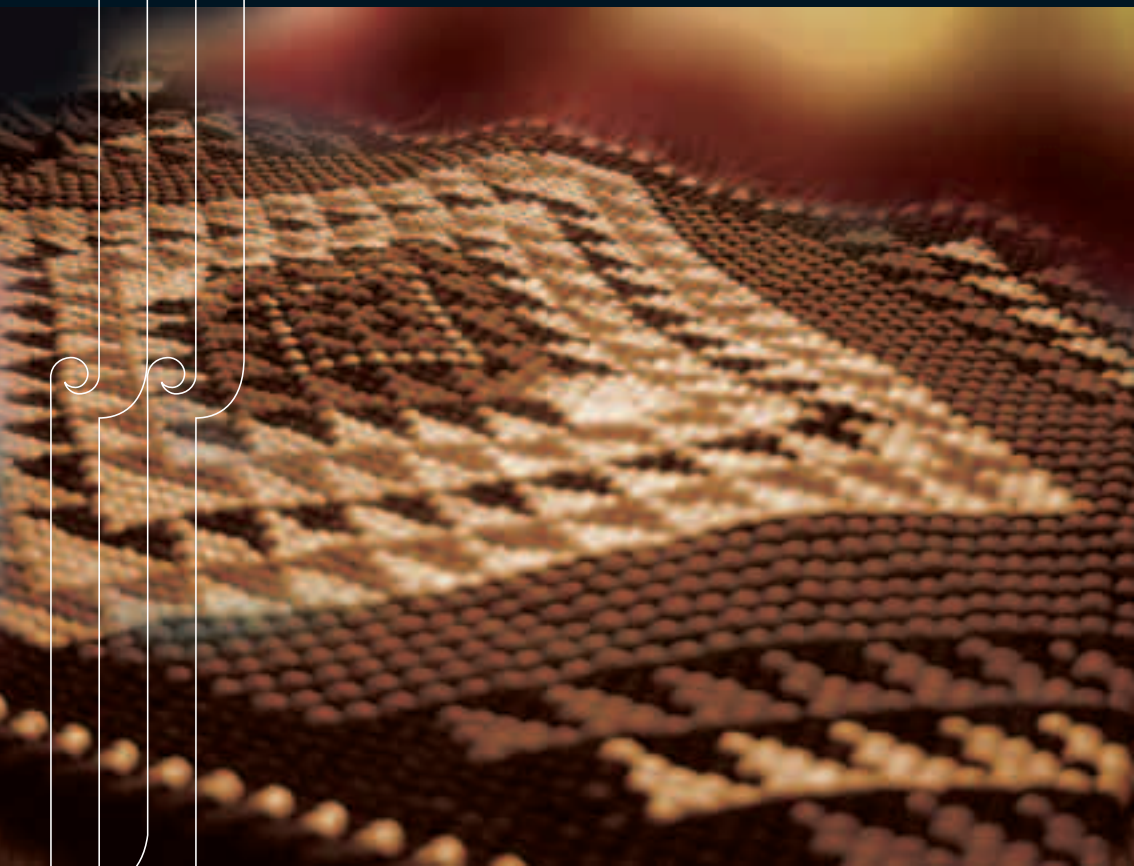


Pūrongo Ā-tau | mō te tau i mutu i te
30 o Pipiriri 2005



Te Puni Kōkiri



Pūrongo Ā-tau a



Te Puni Kōkiri

*mō te tau i mutu i te
30 o Pipiri 2005*



Mīnita mō ngā Take Māori

Tēnei te honore kei ahau ki te tuku i te Pūrongo Ā-tau a **Te Puni Kōkiri** mō te tau i mutu i te 30 o Pipiri, 2005, ki a koe.

A handwritten signature in cursive script, appearing to read 'Leith Comer'.

Leith Comer

Tumuaki Whakahaere

Rārangi Take

Mai i te Tumuaki Whakahaere.....	4-5
Kapa Kaiārahi Whakahaere Āhua Hou 2004/05.....	6
Huanga Rautaki	7-11

PĀNUI TAKE MONI

Pānui Mana Whakahaere.....	12
----------------------------	----

PĀNUI O TE MAHINGA RATONGA

- Kaupapa here me te Aroturuki – Wāhi Hapori me te Tikanga 16-19
- Kaupapa here me te Aroturuki – Wāhi Ōhanga me te Hinonga..... 20-23
- Kaupapa Here - Honohononga Karauna Māori 24
- Honohononga me ngā Pārongo 25-29
- Whakahaere Mahinga..... 30
- Ratonga ki te Kaitiaki Māori..... 37
- Mahinga Whakarato Take Pāremata 38-40
- Pūrongo mō te Hāugaitanga o te Whakaiti Ritengakore 41

Mai i te Tumuaki Whakahaere

He tau whakahīrahira tēnei mō Te Puni Kōkiri – he tau whakatōpū, whai ake i ngā whakarerekētanga whakahaere i hangaia i te tau tōmua iho.

Tēnei te tau i hono mai te **kapa Kaiārahi Whakahaere āhua hou** ki ahau ki te kei o te waka – Hekia Parata, Hekeretari Kaitiriwā, Kaupapa Here, Alison Thom, Hekeretari Kaitiriwā, Honohononga me ngā Pārongo, Craig Owen, Hekeretari Kaitiriwā, Ratonga Tautoko. Me taku tino manawa reka ki te kapa nei mō te ārahitanga whakamua i ngā wāhi take nui, ētahi o ēnei e whakamārama ana ki raro nei.

Tēnei te tau i mahi mātou ki te whakaū me te whakamau i tā mātou **Huarahi Rautaki**. I whaiwāhi mai te whakaūtanga i te huanga rautaki – *ngai Māori e angitu ana hei Māori* me te tūranga a Te Puni Kōkiri hei kaitohutohu matua mō ngā honohononga kāwanatanga – Māori, te ārahi Kaupapa here Tūmatanui Māori, me te whakahaere honohononga me ngā pārongo.

Tēnei te tau i whakaminea te Māori mō te **Hui Taumata** i te marama o Poutū-te-rangi. Taku manawareka ki te mihi atu ki te takoha a Te Puni Kōkiri ki te Hui Taumata, arā, ngā mahi o a mātou kaimahi ki tēnei hui angitu. Me te mea manea anō, ki te kite i ngā huanga, e whakamahia nei e mātou, e whakaata ana i ngā huanga i puta mai i te Hui Taumata.

Koia nei te tau i mahi a Te Puni Kōkiri ki te **hanga i te Huarahi Pūmanawā Nohopuku Māori**, me tōna wāhanga take nui, te Pou Tarāwaho Pūmanawa Nohopuku Māori. Ko tēnei Huarahi e whakātu ana i ētahi mahinga nui ki te whakatutuki i tētahi nekenga tauira taketake ki roto i ngā Kaupapa here Tūmatanui Māori, i konei ka kitea te whakapūmau nui ake ki ngā mahi whakaorite i waenga i te whakamanawa pūmanawā nohopuku me te whakatika tarepa. Ka whakamātautia, ka whakamahinetia te Huarahi i te tau 2005/06, anā mutu ai tēnei, ka tukuna atu hei mahinga mā ngā pokapū rāngai kāwanatanga ake.

Koia nei te tau i **whakapakaritia tā mātou raukaha Honohononga, raukaha Pārongo** i te hangatanga i ngā tūranga Kaitohutohu Pārongo ki roto i a mātou tari ā-rohe, me te whakapūmau anō i te tūranga whakahīrahira o a mātou kaimahi ā-rohe ki te whanaketanga o ngā Kaupapa here Tūmatanui Māori. Ko te whakaotinga i te whanaketanga kaupapa here tētahi ake tūranga

whakahirahira – te whakahaere honohononga i waenga i te Māori me ētahi ake e whai tikanga ana ki te angitu Māori. Mō ēnei take, ka tīmatahia e mātou te mahi ki te whanake i tā mātou **Rautaki Whakahaere Honohononga**. Ka whanaketia, ka whakamahia tēnei a te tau 2005/06.

Hei whakamutu, i roto anō i te tau kua pahure, he hanga raukaha anō tētahi o a mātou arotahi take nui, koia nei te aronga atu ki te whanaketanga me te whakamahinga i tā mātou, **Rautaki Raukaha Tāngata** me te **Whakahaere Mātauranga**, me ngā mahi ki te whakapai ake i a mātou pūnaha tautoko Hangarau Pārongo.

Ko te whakarāpopotonga, kua whakamanatia tā mātou Huarahi Rautaki ki roto i te kāwanatanga. Kua whanaketia e mātou te Huarahi Pūmanawā Nohopuku Māori ka whakawhiwhi ārahitanga mō a mātou mahi, me te pūmanawā nohopuku kei mua, ki te ārahi i ngā mahi a te kāwanatanga ki te takoha atu ki a ngai Māori e angitu ana hei Māori. Kua tīmata a mātou mahi ki te whakapakari raukaha hei whakahaere i te honohononga me ngā pārongo. Kua whanaketia e mātou ngā kaupapa e hāngai ana ki te hanga i tā mātou raukaha.

Kia mihi atu ahau ki ngā kaimahi a Te Puni Kōkiri, kua mahi kaha nei ki runga i ngā wāhanga katoa o a mātou mahinga i te tau ki muri, kua ārahi hoki ki te whakatakoto i te papa mō te mariu, i a tātou e whakatata atu ana ki te tau kei mua.



Leith Comer

Tumuaki Whakahaere

Kapa Kaiārahi Whakahaere Āhua Hou 2004/05



Mai i te maui: Alison Thom, Hekeretari Kaitiriwā, Honohononga me ngā Pārongo; Craig Owen, Hekeretari Kaitiriwā, Ratonga Tautoko; Leith Comer, Tumuaki Whakahaere; Hekia Parata, Hekeretari Kaitiriwā, Kaupapa Here.

Ngā Whanaketanga Take Nui i Te Tau Ki Muri

WHAKAŪ I TĀ MĀTOU HUARAHI RAUTAKI

I te tau 2004/05, i whakaūtia e mātou tā mātou Huanga Rautaki, te Tūranga, te Whāinga me te Huarahi, e whakamārama ana ki raro nei.

HUANGA RAUTAKI

NGAI MĀORI E ANGITU ANA HEI MĀORI

Mō tēnei, kua tukuna atu a mātou kaha ki te Huanga Rautaki koia nei e whakanui ana i te whakahiratanga o te Māori, ngātahi, rōpū hoki, e eke ana ki ngā taumata tauwhiro o te angitu. Ko ngā kupu ‘angitu tauwhiro’ e whakapā ana ki te āhua me te taumata o te angitu ka taea te eke atu, me te whakamau mō te roanga wā, a tētahi wā ka kīa koia nei te āhua ritenga tonu.

Ka whakāturia a *Ngai Māori e angitu ana hei Māori*, mā te Māori e:

- whaiwāhi ana ki roto, me te whaipainga mai, i ngā huarahi wātea mātauranga, ōhanga,
- ngā pūtahi e pakari ana, e whakahaere tika tonu ana,
- tipu kakapa ana ngā tāngata i roto i ngā tikanga pakari,
- tipu kakapa i roto i ngā hinonga,
- hanga ana, e whakamau whānau hauora kaha ana,
- tū ana hei tauira wairua auaha mō ētahi ake pakihi, rōpū, hapori, whenua ake rānei,
- pupuri mahi ngātahi, whaipainga ana ki ngā kaiwhaipānga kāinga, ā-motu, me te ao, āpiti atu ki ngā pakihi.

I te tau ki muri, i te hāngai atu te takoha a Te Puni Kōkiri ki te:

- ārahi me te whakaako tohutohu kaupapa here
- whakapakari honohononga, me te
- whakapai raukaha.

TŪRANGA

KO TE PUNI KŌKIRI TE KAITOHUTOHU MATUA MŌ NGĀ
HONOHONONGA KĀWANATANGA-MĀORI,
TE ĀRAHI KAUPAPA HERE MĀORI,
ME TE WHAKAHAERE HONOHONONGA ME NGĀ PĀRONGO

I te mea he pokapū kāwanatanga mātou e arotahi ana ki te Māori anake, ka tau a Te Puni Kōkiri ki tētahi tūranga ahurei ki te whakawhiwhi ārahitanga me te tautoko ki ōna kaupupuri pānga kia takoha hāngai atu ki te Huanga Rautaki.

Ka tutuki tēnei mā te ārahi me te tautoko i te kāwanatanga ki roto i ngā kaupapa here tino pai, te aroturuki hāngai, me te hanga, te whakaū whanaungatanga kaha.

I te tau ki muri, he maha ngā momo takoha take nui a Te Puni Kōkiri ki a *ngai Māori e angitu ana hei Māori*. Kua kitea te ārahitanga e haere tonu ki roto i te Rautaki Reo Māori, ngā mahinga take nui ki roto i te Whakapāho Māori, te whanaketanga i te Rautaki Kāwanatanga ki te āwhina i a ngai Māori ki te whakapai ake ngā whakahaere o ngā rōpū Māori, āpiti atu ki te whakamānutanga o te Ipurangi Whakahaere Hāngai, te whanaketanga i ngā taputapu ki te whakapai ake i te whanaungatanga Karauna-Māori, me te whanaketanga i te Huarahi Pūmanawā Nohopuku Māori.

Kua aroturukitia e mātou ngā wāhi e pā ana ki te Hauora me te Mātauranga, me ngā kaupapa mahi ake a Te Puni Kōkiri. Kua arotahi atu anō mātou ki te hanga me te whakaū honohononga kaha, hei tauira, ki te ārahi i ngā hui tari kāwanatanga ki ngā rohe, (Hui Waenga – rāngai Ā-rohe), ki te whakahaere, te whakarite, me te whakatū hui mō ngai Māori, te kāwanatanga, me ētahi kaupupuri pānga take nui.

WHĀINGA

‘WHAKATINANA PŪMANAWĀ NOHOPUKU MĀORI’

I te tau ki muri, kua whanaketia e Te Puni Kōkiri te Huarahi Pūmanawā Nohopuku Māori ki te whakatinana pūmanawā nohopuku Māori. Ko ngā kaupapa a te Huarahi Pūmanawā Nohopuku Māori (kua tuhia ki roto i Te

Pānui Whāinga a Te Puni Kōkiri – 1 Hōngongoi 2005, p8) koia nei te tūāpapa o ngā mahi katoa a Te Puni Kōkiri.

HUARAHĪ

TE PUNI KŌKIRI 'E AHU WHAKAMUA NGĀTAHI ANA'

Ko te tikanga whakamārama o ngā kupu, Te Puni Kōkiri, 'he rōpū e ahu whakamua ngātahi ana'. E rua ngā wāhanga o tēnei, te mahinga ngātahi ki roto, me te mahinga ngātahi ki waho.

Hei whakakaha ake i te mahinga ngātahi ki roto, i tīmatatia e Te Puni Kōkiri he anga whakarōpū hou mai i te 1 o Hōngongoi 2004. E toru ngā wāhanga pakihī matua me te Tari Kaitiaki Māori i roto. Kei te tautokohia ēnei wāhanga pakihī e ngā kaimahi kei roto i te Tari A-motu, Te Whanganui ā Tara, me ngā tari ā-rohe te kau, puta noa i te motu.

Kia oti tika ai ngā mahi a Te Puni Kōkiri, kei te mōhio mātou i te hiahia o ngā wāhanga katoa o te rōpū ki te mahi ki raro i ngā whāinga, te piripono, me te arotahi kotahi. Koia nei te take, ko te whakaū i tā mātou Huarahi Rautaki, te wāhanga whakahirahira o a mātou mahi.

Hei whakakaha ake i te mahinga ngātahi ki waho, kua whakamōhio anō a Te Puni Kōkiri i te mahi whakahirahira ki te whakapakari honohononga atu ki;

- te Māori
- te rāngai kāwanatanga
- ngā pakihī me ngā hapori.

I roto i a mātou mahi hāngai atu ki te whakapakari honohononga, ko ngā mahi ki runga i te whanaketanga i te Rautaki Whakahaere Whanaungatanga, ā, ka whanaketia ki te whakamahi i te tau 2005/06; me ngā mahi kua whakahuainatia, te ārahi i ngā huinga Waenga-rāngai Ā-rohe; te whakatū, te whakahaere, te whakarite hui mō ngā kaiwhaipānga take nui, pērā i, te whakarite i te whaiwāhitanga Māori ki te Whakaari o te Ao kei Aichi.

Hanga i tā mātou Raukaha

He mea tino whai tikanga, te pakaritanga o tā mātou raukaha, mō te hāngaitanga a te pokapū. Mō tēnei mahi, i tīmatatia e mātou ētahi kaupapa, i te tau 2004/05, ka mahia anō i te tau 2005/06.

Kua whakarārangitia ēnei kaupapa ki raro nei:

- **He anga whakarōpū hou.** Kei roto i tēnei ko te whakawhāiti i te rōpū aroturuki, me te rōpu kaupapa here, ki roto i te wāhanga kotahi, te whakawhāiti rautaki o ētahi o ngā tari ā-rohe, me te hanga i ngā tūranga Kaitohutohu Pārongo hou mō ia tari ā-rohe. He mahi take nui kei ngā kaitohutohu ki te kohikohi, me te tuku pārongo mai i ngā rohe, hei tautoko i a mātou tohutohu kaupapa here.
- **He Raukaha Whakahaere Tāngata.** E arotahi ana tēnei ki te rapu me te pupuri kaimahi, me te whanake ārahitanga. Ka whakatikaina te rautaki kia whakamahia i te tau 2005/06.
- **He Raukaha Whakahaere Mātauranga.** Mā te Whakahaere Mātauranga Pai ka kaha ai ngā kaimahi ki te whakawhānui i ngā mātauranga hei whakamau, hei hanga, hei tohatoha mā Te Puni Kōkiri – te mea nui ki ngā kaupapuri pānga take nui. I tīmatahia te whanaketanga o te rautaki i te tau 2004/05, ka haere tonu kia whakamahia a te tau 2005/06.
- **Rautaki Whakahaere Honohononga.** Ko ngā honohononga tino pai me ngā hanga pārongo tōtika, e tautoko i a Te Puni Kōkiri ki te whakatutuki i te Huanga Rautaki. Kei te whakapakaritia tā mātou herenga tari ā-rohe me te āhua o tā rātou takoha atu ki ngā kaupapa here tino pai. Kua tīmata kē ngā mahi whakapai i tēnei rautaki i te tau 2004/05, ka haere tonu kia whakamahia i te tau 2005/06.

He maha ngā āhuatanga whakahirahira a te Hui Taumata i Poutū-te-rangi, 2005, ko tētahi ko te whakamanatanga ki a mātou, i tā mātou Huarahi Rautaki. Hei tauira, i ōrite tonu te Huanga Rautaki 'Ngai Māori e angitu ana hei Māori', me te Whāinga a Te Puni Kōkiri ki te 'Whakatinana i te Pūmanawā Nohopuku Māori' ki ngā whakaaro i puta ki te hui.

Kua tautokona anō ki a mātou, e ngā kupu karere o te hui, a mātou mahinga ki te whanake i te Huarahi Pūmanawā Nohopuku Māori, te tūranga whakahira kei a Te Puni Kōkiri ki te whakapakari i te tuakiri tikanga Māori, hei tauira, mā roto i te Rautaki Reo Māori, me ngā Whakapāho Māori, me te tautoko whanaketanga ki ngā hapori Māori, mā a mātou mahi hokohoko, whakarite, me te whakahaumi



Pānui Mana Whakahaere

I raro i te Ture Moni Tūmatanui 1989, kei runga i ahau, te Tumuaki Whakahaere o Te Puni Kōkiri, te mana whakahaere mō te whakariteritenga o ngā Pūrongo Pūtea a Te Puni Kōkiri, me ngā whakataunga mō te whakahaere i te whakatakotoranga o ēnei pūrongo.

Kei ahau te mana whakahaere ki te whakatū me te whakaū, ā, kua whakatūria, kua whakaūtia e ahau, tētahi pūnaha whakarite mana whakaroto ka whakawhiwhi pūmautanga āhua pai, mō te ngākau pono me te mau tonu o ngā mahi pūrongo pūtea.

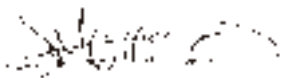
Ki aku whakaaro, e whakaata pai ana ēnei pūrongo pūtea i te tūranga pūtea, me ngā whakahaere a Te Puni Kōkiri mō te tau i mutu i te 30 o Pipiri 2005.




Leith Comer
Tumuaki Whakahaere

30 o Mahuru 2005

Haina Tautoko nā:



Julie-Anne Morrison
Kaiwhakahaere Rōpū Pūtea



PĀNUI O TE MAHINGA RATONGA

Pānui o te Mahinga Ratonga mō te tau i mutu i te 30 o Pipiri 2005

Whakataki

Kua whakarārangitia te Pānui o ngā Whāinga Rātonga ki roto i te *Pānui Whāinga – 1 Hōngongoi 2004*. I konā i hangaia ngā whāinga huanga mō te tau ka pūrongoia ki tēnei pānui mahinga ratonga.

Momo Whakaputa

I hangaia he momo whakaputa mō te tau 2004/05, hei tautoko i ngā huanga i rārangitia i roto i te *Pānui Whāinga – 1 Hōngongoi 2004*.

Tā Mātou Arotahi Mahi

Kaupapa Here me te Aroturuki – Hapori me ngā Tikanga

I roto i tenei momo whakaputa, i hokona e te Minita he tohutohu kaupapa here mō te whanaketanga o ngā kaupapa here, me ngā kaupapa mahi ka whakapā tika atu ki te tūranga hapori, me te tūranga tikanga o te Māori me ngā rawa Māori.

I roto i ngā tohutohu kaupapa here a Te Puni Kōkiri, he tohutohu rautaki mō te whakamahi hāngai atu o ngā rawa me ngā mahinga ki te whakapai ake te whanaketanga hapori me ngā tikanga Māori.

I roto i ngā whakaputa take nui ko te:

- Rautaki Whakahaere
- whanaketanga o te Huarahi Pūmanawā Nohopuku Māori, āpiti atu ko te Pou Tarāwaho Pūmanawā Nohopuku Māori
- mahinga i te Rautaki Reo Māori
- Pāho Māori

Ka whakarārangitia ēnei whakaputa ki raro nei.

Rautaki Whakahaere

I te tau 2004/05, i whanaketia e Te Puni Kōkiri tētahi Rautaki Whakahaere kia hāngai atu ki te āwhina i te Māori ki te whakapakari i ngā whakahaere o a rātou rōpū. I puta mai ēnei mahinga i runga i te mōhio he wāhanga nui tonu ngā rōpū e whakahaere tōtika, e whakahaere pai ana, hei hāpai i te angitu ōhanga, te angitu hapori me te angitu tikanga. Kua whakaatu mai e ngā mōhiotanga o tāwahi, ko ngā rōpū kei te whakahaere pai, kei te whakaata i a rātou mahinga tikanga, koirā ngā rōpū ka eke ki te angitu, i runga atu i ngā rōpū kahore i te whakaata tikanga.

Kua kitea anō e Te Puni Kōkiri te piki o te mana whakahaere o te Māori i raro i ngā whakataunga Tiriti me ngā whakataunga ika, me te whanaketanga whenua Māori. Mā te whakapakari i te whakahaere Māori ka whakapā pai

atu ki ngā huanga hapori, ōhanga, kahore anake mō te Māori engari mō ngā kainoho katoa o Aotearoa.

Ko ētahi o ngā mahinga ko te:

- whanaketanga o te Rautaki Whakahaere
- pukapuka whiriwhiri e rārangi whakaaro ana mō tētahi anga whakahaere hou mō ngā rōpū Māori, (hei wāhanga o te Rautaki Whakahaere) i tukuna i te 30 o Whiringa-ā-nuku 2004 i te hui tau a te Whetereihana a ngā Rōpū Mana Māori, me te minenga, i te 30 o Whiringa-ā-rangi 2004.
- whakahaere hui whiriwhiri ki a ngai Māori me ētahi atu kaiwhaipānga mō ngā whakaritenga kei roto i te Rautaki.

I hikina te ture i whakaarotia ki te tuku ki te Pāremata i mua o 30 o Paenga-whāwhā 2005. Kua whakatau, hei te marama o Whiringa-ā-rangi 2005, ka oti tētahi pūrongo ki te komiti matua a te Pāremata, kei roto ko ngā tikanga kaupapa here mō te pou tarāwaho ā-ture, me te pou tarāwaho kaupapa here a te kāwanatanga.

Huarahi Pūmanawā Nohopuku Māori

I te tau 2004/05, i ārahitia e Te Puni Kōkiri tēnei huarahi kaupapa here whānui, ki ngā Kaupapa here Tūmatanui Māori, ka whakamanatia e te Komiti Matua Pāremata, i Whiringa-ā-rangi 2004. Hei te otinga, ka āwhina te Huarahi Pūmanawā Nohopuku Māori ki te whakamōhio i ngā wāhi mahinga tuatahi mō te mahinga kaupapa here, ngā whakataunga hokohoko, ngā rangahau, te aroturuki me te arotakenga, te whakaine mahinga, me ngā pūrongo huanga, mā te mahinga o te wāhanga me te taputapu take nui, te Pou Tarāwaho Pūmanawā Nohopuku Māori.

Kei roto i ngā mahinga ko:

- te whakaotinga o te Pou Tarāwaho Whanaketanga Whānau a te wā tika, i mua o te 30 o Mahuru 2004
- te whanaketanga o te Huarahi Pūmanawā Nohopuku Māori, whakangungu kaimahi i Hakihea 2004, me Kohitātea 2005
- te whakamātautanga tuatahi i te Huarahi mā te whakamahi atu ki te Rautaki Raukaha Tāngata me ngā Mahinga me te Rangahau Whanaketanga Whānau.

Kei te whakamātautia te Huarahi Pūmanawā Nohopuku Māori kia noho tika mō te whakamahinga ki runga i te Rāngai Kāwanatanga atu i 2006.

Rautaki Reo Māori

I te tau 2004/05, i haere tonu ngā mahi a Te Puni Kōkiri ki te ārahi i te whakamahinga o te Rautaki Reo Māori (RRM). Ko te RRM e whakahua ana i ngā whāinga me te tūranga a te kāwanatanga ki te tautoko i te tipuranga me te whanaketanga i te reo Māori. Me te whakatakoto i te mana whakahaere mō te tūranga a te kāwanatanga ki ngā pokapū. Ko Te Puni Kōkiri te mana whakahaere mō te whakarite me te aroturuki i waenga pokapū.

Anō i te tau 2004/05, i whakahaere e Te Puni Kōkiri ētahi hui ki ngā pokapū RRM ki te tautoko i ngā mahi mahere me ngā mahinga a ētahi ake pokapū, hei 'hoa tata', ka whakahaeretia ngā huihuinga ki te whiriwhiri whakaritenga i waenga pokapū, e pā ana ki ngā take reo Māori. Nā Te Puni Kōkiri anō i whakahaere ngā mahinga o te Kaupapa mahi Pārongo Reo Māori, me ngā whakahaere a te *Tukutuku Kōrero*, he kaupapa whakamātau whanaketanga reo ki ngā whānau.

E rua ngā mahi take nui kua hikitia mō te tau 2005/06, e pā ana ki te rangahau me te whakatū i ngā whāinga rima tau, hei whakaāetanga e ngā pokapū ārahi. Ko te whai a Te Puni Kōkiri kia oti ngā rangahau tuatahi mō ngā whiringa reo tūturu i mua o te 30 o Whiringa-ā-rangi 2004. I oti te rangahau i te 30 o Pipiri 2005, ka whakaurua ngā kitenga ki roto i tētahi purongo whānui me ngā huarahi hei haerenga whakamua, a te tau 2005/06. Ahakoa i oti ngā mahi mō te whakamahinga i te Rautaki Reo Māori i tōna wā, (i mua o te 30 o Pipiri 2005) kei te haere tonu ngā whāinga kia whakaāe mai ngā pokapū ārahi.

Pāho Māori

He mana whakahaere rautaki, mahinga, tā Te Puni Kōkiri mō te pāho Māori. I te tau ki muri, i hāpai a Te Puni Kōkiri ngā mahi ki te whakapakari i ngā wāhanga rautaki o te pāho Māori; kua oti i a rātou tētahi mahinga kia haere tonu te whanaketanga a te Rautaki Reo Māori, i te tau 2005/06. Kei roto anō i te mahinga tētahi pūrongo mō ngā take e pā ana ki te Rautaki Reo Māori i whakaotia i muri i te wā i whakatakotohia (Poutū-te-rangi 2005, kahore i te 31 o Whiringa-ā-nuku 2004), me te whakaata i ngā nekehanga a ngā kaimahi pakeke.

I te tau 2004/05, i mahia tonu te kaupapa rangahau, ki te tuhi i te hitori, ngā āhuatanga ināianei, me te huarahi ahunga whakamua a te Pāho Māori. (tirohia Aroturuki ki raro nei).

Tētahi arotahi nui tonu ko te arotake i te āhua whakahaere me ngā hiahia a te kōtuitui reo irirangi Māori. Nā tēnei mahi ka whiwhi pūtea ake hei tautoko i ngā mahi whanake i ngā teihana reo Irirangi. Tāpiri atu, ka haere tonu ngā mahi a Te Puni Kōkiri ki te aroturuki i ngā mahinga a ngā rōpū pāho Māori.

AROTURUKI

Anō i roto i tēnei whakaputa, i hokona e te Minita te arotake i ngā kaupapa mahi a ētahi ake pokapū rāngai kāwanatanga, e hangai atu ana ki te tohutohu i ngā kaupapa here me ngā kaupapa mahi e tuku huanga hapori, tikanga tōkeke ana mō te Māori.

I roto i ngā whakaputa motuhake ko:

- Te pūrongo mō te *Ratonga Tamaiti Ngaro i te Rohe o Tauranga*, i whakamanatia e te Komiti Matua o te Pāremata, Poutū-te-rangi 2005.
- Te pūrongo mō te *Kanataraka i ngā Ratonga Tautoko Kura*, Kohi-tātea 2005, i whakaaetia ki te Tāhuhu o te Mātauranga, ka tukuna ā-muri i te whakamanatanga a te Komiti Matua a te Pāremata.
- *Whanaketanga i te Rōpū Mahi Hauora Māori*: Kua oti te Pūrongo *Tātari Hāngaitanga* ka tukuna ā-muri i te whakamanatanga a te Komiti Matua a te Pāremata.
- Te whakawhiwhi tohutohu kaupapa here tere tonu ki te Minita mō ngā Take Māori, mō ngā pūrongo, ia toru marama, e whakaotia ana e Te Taura Whiri i te Reo Māori, Te Māngai Pāho, me te Ratonga Pouaka Whakaata Māori.

Kaupapa Here me te Aroturuki – Ōhanga me te Hinonga

I roto i tēnei whakaputa, i hokona e te Minita he tohutohu kaupapa here mō te whanaketanga o ngā kaupapa here, me ngā kaupapa mahi i whakapā motuhake atu ki te āhua ōhanga, me te āhua hinonga o ngā tāngata me ngā rawa Māori.

I whakaurua ki roto i ngā tohutohu kaupapa here a Te Puni Kōkiri, he tohutohu rautaki ki te kāwanatanga mō te whakamahī hāngai i ngā rawa me ngā mahinga kia tau atu ki te whakapai i te whanaketanga ōhanga Māori. Te manako o ēnei kaupapa here, he āwhina kia pūmau te pupuri, me te whanaketanga o te papa rawa Māori mō ngā reanga kei mua.

Ko ētahi o ngā whakaputa motuhake ko:

- Te tohutohu kaupapa here mō te Whanake Whenua Māori
- Te tohutohu kaupapa here mō te Tāpoi Māori
- **Ratonga Whanake Pākihi Māori**
 - o haumi ki roto i te Ratonga Whakarite Pākihi Māori (RWPM)
 - o whakahaere o te Pūtea Hinonga Whanake Whānau (PHWW)
 - o whakatū i te Pae Ipurangi Whakahaere
 - o haumi ki roto i ngā Kaupapa Mahi Kaiakopono
 - o whakahaere i ngā whakaritenga Kōharinga me te Kopounga
 - o haumi ki roto i te Kaupapa Mahi Kaiakopono Whakarite Whenua

TOHUTOHU KAUPAPA HERE

Whanake Whenua Māori

Kei te ārahi a Te Puni Kōkiri i te whanaketanga o ngā kaupapa here hei āwhina i te Māori ki te whakapai i a rātou whenua. Ko te whakamōhiotanga tēnei ko te whenua Māori tētahi rawa nui tonu mō te whanaketanga ōhanga, hapori, me te tikanga. Ahakoa i ētahi wāhanga kei te whakamahī pai te whenua Māori, me ētahi Māori kei te whiwhi painga i a rātou pākihi papa-whenua, kei te rapu huarahi kia nui ake ngā painga; kei ētahi wāhi kei reira te pūmanawā nohopuku mō te whenua Māori ki te tautoko i te angitu tauwhiro, kei te iti noaiho te whakamahinga i te whenua.

I te tau 2004/05, i roto i ngā whakaputa tētahi whakaaro ki te hanga rautaki ki te āwhina i te Māori ki te whakakaha i te Whanaketanga Whenua Māori,

me te whiriwhiri i tēnei, ki ngā hoa rāngai kāwanatanga. Heoi, kua hikina tētahi pūrongo ki te Minita e pā ana ki ngā rāngai whenua me ngā huarahi whanake ā-mua, te tikanga ka oti i te 30 o Pipiri 2005, kua hikina ki te marama o Whiringa-ā-rangi 2005¹, ka whakaoti.

Tāpoi Māori

Ko ngā tohutohu kaupapa here i whaiwāhi ki te whakaotinga o tētahi mahere kaupapa mahi whakapai ake mō te Tāpoi Māori. I whakaotia tēnei i te wā tika, arā, te 31 o Whiringa-ā-nuku 2004.

NGĀ RATONGA WHANAKETANGA PAKIHI MĀORI

Ratonga Whakarite Pakihi Māori (RWPM)

I te tau 2004/05, mai i te pūtea \$5.5m mō te RWPM, \$5.1 i whakapaua. I roto i tēnei, e \$2.1m ki te akopono i ngā pākihi Māori e tīmata ana, kua tīmata rānei, me te \$2.0m mō te Ratonga Whanaketanga Pakihi Māori. I roto i tēnei ko te whakatūtanga i ngā mahi kakama whakamātau mō ngā tohunga kaiakopono, me ngā tohunga tohutohu o te RWPM, ngā whakahaere, me ngā mahinga whakarite whenua. He mahinga kakama hou ēnei i papahia i raro i te taurira RWPM.

I roto i ngā whakaputa ko:

- 997 te kaute tōpū ngā rēhitatanga (te whāinga 1000) i tae mai mō ngā āwhina RWPM
- 192 ngā pakihi Māori hou, kua tīmata rānei, i whiwhi āwhina tīmatanga pakihi (ahakoa te whāinga tīmatanga kia 250 ngā pakihi hou)
- 149 ngā pakihi i uru atu ki ngā āwhina tohunga kaiakopono, tohunga tohutohu rānei
- i tīmatatia te hoahoa me te whanaketanga o ngā mahi whakamātau whakarite whenua i roto i te tau, nā reira, kei te hangaia tonu te huarahi hopu raraunga, mō te whaiwāhitanga me te ahu whakamua.

Pūtea Hinonga Whakapūmau Whānau (PHWW)

I te tau 2004/05, \$1.7m i whakamanatia, \$1.134m i whakapaua hei tautoko i ngā mahinga 19, mai i ngā rōpū e tautoko ana i ngā mahi kōtuitui, ngā mahinga ngātahi, ngā mahi hāpai pakihi rānei. He iti iho tēnei whakapaunga moni ki te pūtea i whakamanatia, i te mea, kāhore i oti wawe ngā whakaritenga hei whakahaere i ngā mahinga mō tēnei kaupapa mō te PHWW.

1 Tirohia (Te Minita a te Komiti Matua Pāremata (05) 14/4)

Pae Ipurangi Whakahaere

I whakamāunutia te pae ipuranga pārongo whakahaere hou ki te hui tau a te Whetereihana o ngā Rōpū Mana Māori ki Te Whanganui-ā-tara, i te 30 o Whiringa-ā-nuku 2004. He puna pārongo te pae ipurangi “Whakahaere Hāngai” hou (governance.tpk.govt.nz) mō ngā kaiwhakahaere me ngā kaitiaki. E tuku mahinga tino pai ana, āpiti atu ki ngā rauemi, mai i te Pūtahi o ngā Kaiwhakahaere, Te Tari Hokohoko Hea, te Kōmihana Rēhita Mōkete, me te pukapuka Whakahaere. Nā tēnei mahi kakama i tuku huarahi wātea ki te whakawhiwhi rawa pārongo whānui mō te whakahaere ki ngā tāngata katoa, āpiti atu ki te Māori.

Kaupapa mahi Kaiakopono Whakahaere

Kua whakaaturia e te rangahau te whakahiratanga o te whakahaere kia āngitu ngā rōpū. Te hiahia o tēnei kaupapa mahi he āwhina i ngā rōpū Māori ki te whakapakari i a rātou wāhi whakahaere. I te tau 2004/05, e ono katoa ngā rōpū Māori i whiwhi akopono hei wāhanga o te Kaupapa Mahi Akopono Whakahaere, kotahi tēnei i runga ake i te hiahia kia rima.

Ngā Whakaritenga Kōharinga, me ngā Whakatūtanga

I te tau 2004/05, i te mahi a Te Puni Kōkiri ki te ārahi i te whanaketanga i te whakaritenga kōharinga me ngā whakatūtanga ki runga i te rāngai kāwanatanga, ka whanaketia he pātengi raraunga hei mahinga mā te rāngai kāwanatanga, āpiti atu ko te whakamātautau i tētahi tauira taketake whakarite. Ka puta mai i ēnei whakamātautau ngā whakapainga ka whakamahia hei te tau 2005/06.

Kaupapa Mahi Akopono Whakarite Whenua

E whitu ngā rōpū pupuri whenua i whiwhi akoranga pono ki te 30 o Pipiri 2005, 17 ngā poraka whenua ngātahi i whaiwāhi me a rātou ekenga ki ngā taumata rerekē o te whanaketanga. Ko te whai a Te Puni Kōkiri kia 20 ngā rōpū pupuri whenua hei akopono mā rātou.

AROTURUKI

Anō i roto i tēnei momo whakaputa, i hokona e te Minita te aroturuki i ngā mahi kakama a ētahi ake pokapū rāngai kāwanatanga, e whai ana ki te whakapā atu ki ngā kaupapa here, me ngā kaupapa mahi ka whakawhiwhi huanga ōhanga tōkeke, huanga hinonga mō ngai Māori.

Kei roto i ngā whakaputa motuhake kō:

- tētahi pūrongo mō te arotakenga whakatika i te Hanga Raukaha – te kaupapa mahi Whakapakari Whakahaere me ngā Whakahaere Poari. Tōna tikanga me oti tēnei i mua o te 31 o Poutū-te-rangi 2005, nō te whakaāetanga kia whakaroatia tēnei wā, ka tae atu ki te Minita mō ngā Take Māori i te wā tika, te 30 o Pipiri 2005.
- he arotakenga whakatika i te Kaupapa Mahi Whakapūmau Whānau – Mahinga me te Rangahau, tōna tikanga me oti i te 30 o Paenga-whāwhā 2005, i tukuna atu ki te Minita mō ngā Take Māori i te 2 o Haratua 2005.
- he pūrongo whakaroto i whakamanatia e te Tumuaki Whakahaere i te 11 o Whiringa-ā-rangi 2004, mō te arotakenga whakahaere i te kaupapa mahi Kaitātaki-Ā-Rohe i whakamahia i te tau moni, 2003/04.
- he pūrongo mō te arotakenga i te kaupapa mahi Whakatika Taumata Rohe-Kāinga, i tukuna ki te Minita i te 25 o Kohitātea 2005. Ko te wawata tuatahi kia tae atu i mua o te 30 o Hakihea 2004.
- he pūrongo mō te arotakenga whakapā a te kaupapa mahi Tuku Rawa Hāngai i oti i te wā tika, i te 30 o Whiringa-ā-nuku 2004.
- ngā pūrongo riterite tonu (āpiti atu ngā pūrongo ia toru marama) mō te haere me ngā ekenge o ngā mahinga Whakarite Pākihi Māori kua tukuna atu ki te Minita mō ngā Take Māori.

Kei te takoto ngā pūrongo kitenga me ngā whakapātanga atu ki te kaupapa mahi ki roto i ia pūrongo, ka taea te tiki atu kei Te Puni Kōkiri.

Kaupapa Here – Honohononga Karauna Māori

I roto i tēnei momo whakaputa, i hokona mai e te Minita he tohutohu kaupapa here mō te whanaungatanga i waenga i te Māori me te Karauna, me ngā hononga i waenga i tēnā whanaungatanga me ngā huanga mō te Māori. I roto anō ngā take kaupapa here Tiriti me ngā tohutohu o te whakapātanga o ngā ture kahore i te tirohia i ērā ake o ngā momo whakaputa.

Anō, i roto i tēnei momo whakaputa, i ārahitia e Te Puni Kōkiri te whanaketanga o te Pou Tarāwaho Whanaungatanga. Ko tētahi o ngā whakaputa nui e pā tata ana ko ngā Taputapu Whanaungatanga Karauna Māori (TWKM), e rārangitia ki raro nei.

Kei roto i ngā whakaputa motuhake, ko:

- Ngā Kaupapa Here Taputapu² Whanaungatanga Karauna Māori ki ngā Mauri Karauna: ko te whanake i tētahi pou tarāwaho kaupapa here me ngā tohutohu pā tata koia nei te kaupapa o ngā tuhinga ka oti i mua o te 30 o Pipiri 2005. I oti tōmua ēnei tuhinga ka whakamanatia e te Komiti Matua a te Pāremata i ngā marama o Here-turi-kōkā me Whiringa-ā-rangi 2004
- Ture Takutaimoana me te Papamoana: he tohutohu kaupapa here mō ngā whakawhitiwhiti whakaaro, ngā kaupapa here whakawhitiwhiti whakaaro, me ngā tikanga tuku iho
- Kerēme i raro i te Tiriti o Waitangi: te whakawhiwhi whakaritenga me ētahi ake tautoko ki ngā iwi e whaiwāhi ana ki ngā mahi whakawhitiwhiti whakaaro
- Whakataunga i raro i te Tiriti o Waitangi: tohutohu hanga mana whakahaere ki ngā māngai kaikerēme e toru
- Pire o Te Rūnanga o Ngāti Awa: he pūrongo ki te Komiti a te Pāremata mō ngā Take Māori mō tēnei Pire
- Pire Whakatika Whakahaere Rawa: te tuku tohutohu me te whaiwāhi ki roto i ngā whakahaere āpiha kāwanatanga mō te tuhinga tuatahi i te Pire
- Heoi, kua hikina ngā tohutohu kaupapa here ki te hanga i tētahi rautaki ki te whakamaenengā whakahaere a te Tari a te Kaitiaki Māori, atu ki te tau 2005/06.

2 Ko te whakamārama kua whakaaetia mō TWKM ko 'tētahi pukapuka whakaaetanga, whakaritenga rānei, kua hainatia e ngā rōpū e rua, e whakatū ana, e whakanui ana rānei, i te honohononga mahinga i waenga i ngā Minita, te kāwanatanga, ngā pokapū, ngā mauri Karauna rānei, me tētahi whānau, hapū, iwi, rōpū Māori, hāpori Māori. (Te Minita a te Komiti Matua Pāremata (04)25/8)

Honohononga me ngā Pārongo

Kei roto i tēnei momo whakaputa ngā mahi kaha ki ngā rohe kāinga ki te āwhina i te Māori whakatinana i a rātou tūmanako. Te mahi tahi ki ngā whānau, hapū, iwi, te Māori, ngā hapori me ngā rōpū Māori, ētahi ake pokapū kāwanatanga, kaunihera ā-rohe, rōpū i waho o te kāwanatanga, me te rāngai tūmataiti.

Tata ana ki te 100 te kōtuitui o ngā kaimahi ā-rohe a Te Pun Kōkiri, e mahi ana ki ngā whānau, hapū, iwi, ngā hapori me ngā rōpū Māori, ki te hokohoko, te whakarite, me te whakatakoto i ngā huarahi wātea ki te whakarete i te whanaketanga Māori.

I roto anō i ngā mahi o tēnei momo whakaputa, ko te rere hāngai o ngā pārongo atu ki, mai i, te Tari Ā-motu, kia pūmau ai ngā whakaaro a te Māori kei ngā rohe e tohutohu ana i ngā kaupapa here me ngā mahinga. Ko te rere hāngai o ngā pārongo mai i ngā rohe atu ki te Tari Ā-motu, koia nei tētahi o ngā tikanga mahi e haere tonu, e pā tata ana ki te Rautaki Whakahaere Honohononga.

I te tau 2004/05, i tīmatahia e Te Puni Kōkiri he mahi whakataki ki te whakapai ake i tā mātou Rautaki Whakahaere Honohononga mā roto, hei tauira, te whakatūtanga i ngā Kaitohutohu Pārongo ki roto i ngā rohe. Ka whanaketia anō, ka whakamahia te Rautaki Whakahaere Honohononga a te tau 2005/06.

Ko ngā ratonga motuhake kei roto, ko:

- te ārahi i ngā huihuinga tari kāwanatanga katoa ki roto i ia rohe, pērā i te karanga i ngā Hui Waenga-Pokapū Ā-rohe
- te whakaoti i ngā kaupapa mahi waenga pokapū
- te whakahou i ngā kōtaha ā-rohe
- te hokohoko pārongo me ngā rawa mō ngai Māori
- te hokohoko me te whakarite huarahi mā Māori ki ngā rawa me ngā ratonga kāwanatanga
- te hanga huarahi wātea mō te whanaketanga ōhanga, hapori, me te tikanga ki ngā rohe kāinga me ngā rohe ā-waho
- te whakahaere i te pūtea Hanga Raukaha
- te whakawhiwhi pārongo whānui me ngā tohutohu ki te minenga.

RATONGA

Te ārahi i ngā huihuinga tari kāwanatanga katoa ki roto i ia rohe

I whakahaere e Te Puni Kōkiri ngā Hui Waenga Pokapui Ā-rohe (HWPĀ), kia taea ai, kia pai ake, ngā mahinga waenga pokapū i runga i ngā take ōrite. Ahakoa i whai a Te Puni Kōkiri kia tū kia kotahi te HWPĀ ki ia rohe i mua o te 30 o Pipiri 2005, e whitu ngā HWPĀ i whakatūria ki roto i ngā rohe tekau. Heoi, neke atu ki te kotahi ngā HWPĀ i whakatūria ki ētahi rohe, hei tauira, ki Tāmaki Makaurau, e whitu kei reira, ka hui katoa kia 17 ngā HWPĀ i whakatūria i mua o te 30 o Pipiri 2005.

Ko te whakaaro kia tuku pūrongo, ia marama, mai i ngā tari ā-rohe e rua, ki te Rōpū Āpiha Matua Hanga Raukaha (RAMHR), ā, i tutuki tēnei mahi atu ki te mutunga o 2004, i taua wā ka whakatau ki te arotake i te tūranga o te RAMHR. Kei te haere tonu tēnei arotake ki te tau 2005/06.

Mahinga waenga-pokapū

Nā Te Puni Kōkiri i whakahaere ngā mahinga waenga-pokapū. Ahakoa te hiahia ki te whakatū kia rua ngā mahinga waenga pokapū mō ia rohe, e whitu ngā rohe o ngā rohe tekau, i whakaoti i ngā mahinga e rua, i mua i te 30 o Pipiri 2005, me te whā ngā mahinga e haere ana ki roto i tētahi rohe. Hui Katoa, 24 ngā mahinga waenga-pokapū i whakaotia.

Whakahou i ngā kōtaha ā-rohe

Hei wāhanga mō te Rautaki Whakahaere Honohononga, i te whakahou a Te Puni Kōkiri i āna kōtaha ā-rohe. Kei te arotahi ēnei mahi whakahou ki te whakapakari tuhinga pārongo ki te āwhina i ngā mahi hanga hononga, i te hokohoko, me te whanake kaupapa here.

I whai a Te Puni Kōkiri ki te whakaoti i ngā kōtaha ā-rohe i mua o te 30 o Pipiri 2005, e rima o ngā rohe te kau, kua oti. Kua hikina ngā kotaha mō ngā rohe e rua ki te tau 2005/06, i runga i ngā mahi whakatikatika mō ērā rohe.

Kua rārangitia ki raro nei ētahi ake o ngā tauira mahinga i roto i ngā tari ā-rohe a Te Puni Kōkiri:

- **Ngā Moana** – he āwhina i ngā mahi whakaora i ngā tukino waipuke, me ngā rū, ki te rohe Rāwhiti o Waiariki. I te wā o ngā waipuke me ngā rū, i pā

ki te rohe Rāwhiti o Waiariki, he nui rawa ngā mahinga a ngā kaimahi o te rohe o Ngā Moana ki te hokohoko honohononga pai rawa atu i waenga i te Māori me ngā pokapū kaunihera, me te kāwanatanga.

I konei ngā whakautu tika mai i ngā pokapū kāwanatanga ki ngā hiahia toko i te ora, me ngā hiahia whare noho, mō ngā whānau i taka ki raro i ēnei mate whatiwhati tata, tēnei te mea nui ki te Māori me ngā hapori tuawhenua.

- **Takitimu** – nā te whanake i ngā Kaupapa mahi Motuhake e whā, ka tukuna he kanataraka ki ētahi rōpū ā-rohe, ki te hanga Matawai Taiao ā-rohe (huarahi whānui) ki ngā wāhi e toru: Whanaketanga Rangatahi; Te Reo Māori; Tikanga; me te whanake Kaumātua; me te whanaketanga ōhanga, āpiti atu ki te māketē rapu mahi me ngā huarahi mātauranga.
- **Tāmaki Makaurau** – i karangatia he Hui Raru Tūpono me te Whakangungu Hapori Māori angitu i te 30 o Haratua 2005, ki ngā māngai mai te Whare Wānanga o Tāmaki Makaurau, te Tekiona Hauora Hapori, te Kaitiaki Rōpū Akoranga Tiaki, te Pūtahi Rake Haumako mō te Tūpono, me te Hāpai Te Hauora.
- **Tauranga** – i whakahuitia ngā Kaitiaki Whenua Māori maha o roto o te rohe Uru o Waiariki, ki te rapu i ngā Huarahi Wātea Whanaketanga Ōhanga āpiti atu ki te ahu moana, mahinga ngātahi, me te ahuone. Te mahinga nui ko te hokohoko hononga i waenga i ngā Kaitiaki Whenua Māori me ngā pokapū kāwanatanga ake.
- **Te Tairāwhiti** – I tū te hui tuatahi mō ngā Reiti me ratou i whaiwāhi mai i ngā Kaunihera Ā-rohe o Tūranganui-ā-kiwa, Wairoa, me Opotiki. I roto i ngā take nui i whiriwhiria ko tētahi tikanga mahi moata atu ki ngā reiti nama o Tūranganui-ā-kiwa, ngā wāriu whenua 2005, me tā rātou whakapā mai, me ngā reiti e noho nama ana ki runga whenua Māori.
- **Te Waipounamu** – i whakahaeretia tētahi hui rōpū Taura Here. Ko tētahi o ngā huanga he whakaputanga hiahia kia riterite tonu te hui a ngā rōpū – me tētahi tonu ki a Te Puni Kōkiri mā rātou tonu e whakahaere i ngā hui.

- **Whanganui-ā-Tara**

- o I āwhinatia te **Kaitiaki Hokotehi Moriori** i raro i te **Kaupapa Hanga Raukaha**, i te pūtea mō tētahi kaupapa whanake tikanga, te **Kaupapa Rēhītatanga Hokopapa**, hei whakahaere i te hui whakanui i te Kopinga Marae, me te hanga i tētahi maherehere rautaki (5 tau) mō te tāpoi ki runga i te motu. He hui angitu te hui whakatuwhera i te Kopinga Marae, i te marama o Kohitātea 2005, i pānuitia ki roto i ngā pāho “ te hui whakanui tino nui rawa atu, mai i te tau 1835...”.
- o Kaupapa Mahi o Wainuiomata – e iwa ngā pokapū kāwanatanga i roto i tēnei kaupapa i tuku pūtea ki tētahi mahinga whakamātau mahi ngātahi ki Te Rūnanga o Taranaki Whānui. E whai ana te kaupapa ki ngā tamariki Māori me te hapori whānui o Wainuiomata. I whakawhiwhi huarahi mō te whakatauirā tūranga tōruna me ngā tohutohu akopono mō ngā tamariki e ono ki te iwa tau te pakeke. Ko te wāhi mahi matua i reira te kaupapa e whakamahia ana, koirā ano te pokapū pārongo kāwanatanga, kia puta ai ngā pārongo take nui mō ngā ratonga kāwanatanga atu ki te hapori.

- **Waikato** – whakahaeretia tētahi hui ki Parawera Marae, e 45 ngā tāngata i tae atu. Ā-muri i te whakaaetanga katoa ki te whakatū anō i te Kaunihera Rohe Māori o Waikato, ka whakatūria te Rōpū Mahinga Mō tēnei Wā ki te hui. I tukuna ki tēnei rōpū te mahi ki te karanga hui a te marama o Whiringa-ā-rangi, 2005, ka pōwhiri i ngā rōpū Māori ake, me ētahi rōpū e whai pānga ana ki te whakatū anō i te Kaunihera.

MAHINGA

Te Nui

- I hangaia ngā pūrongo kakama, riterite tonu, ia toru marama, mō ngā take ā-rohe, me ngā mahinga ā-rohe, ka tukuna atu ki te Minita
- I tukuna ngā pūrongo, ia marama, mō te āhua o ngā mahinga i roto i ngā kaupapa mahi ā-rohe, ki te wāhanga o te Hekeretari Kaitiriwā mō ngā Honohononga me ngā Pārongo, āpiti ana ki roto, ko te pūrongo marama ki te Tumuaki Whakahaere. I roto i ngā pūrongo ko:
 - o ngā pārongo mō te maha o ngā mahinga kua oti
 - o ngā rā take nui i whakaotia ngā mahi.
- I hopukina ngā wā i whakapaua mō ngā mahinga a ngā tari ā-rohe, mā roto i te Pūnaha Whakahaere Rangahau Pārongo (PWRP) ka tukuna atu ki te Tari Ā-motu.

Kairangi

- I tangona mai he urupare kōkau i te kōtuitui o ngā Kaiwhakarite me ētahi ake o ngā kaimahi o ngā rohe, mā roto i ngā arotakenga kaupapa mahi koia nei i whakamōhio i a mātou hononga mahi atu ki ngā whānau, hapū, iwi, me ngā hapori, me ngā rōpū Māori.
- I tangona mai ngā urupare i ngā kaipupuri pānga take nui i tohu mai i te manawa pai ki ngā ratonga e whakawhiwhi ana, mai i ngā hui i ia rohe, i tae atu te Tumuaki Whakahaere.

Wā tika

I arotaketia ngā mahi i whakahuatia i roto i te *Mahere Whakaputa a Te Puni Kōkiri 2004/05* i te whakatauritenga ki ngā aukatinga e takoto ana i roto i te mahere whakaputa ka whakatikaina i roto i te tau. Kua kōrerotia ngā wā tika e pā ana ki ngā aukati kua whakahuatia, mō ngā whakaputa motuhake kei roto i tēnei Pūrongo Ā-tau.

Whakahaere Mahinga

I whakawhiwhi ratonga kairangi tēnei momo whakaputa ki te tautoko whanaketanga Māori, mā roto i te hoahoa, te tukunga, me te whakahaere i ngā kaupapa mahi haumi hapori.

I ārahinatia tēnei momo whakaputa i ngā ratonga Honohononga, me ngā Pārongo nā te whakawhiwhinga kaupapa mahi, pūtea, me ngā tautoko mahinga. I tautokona anō te whanaketanga tohutohu kaupapa here kei mua, mā te whakawhiwhi pārongo mō ngā akoranga ‘pūtake-harakeke’.

Hei wāhanga mō tā mātou huarahi ki te whakakaha i te Māori ki te whaiwāhi me te angitu hei Māori, i te tau 2004/05, i kawea e Te Puni Kōkiri ētahi kaupapa mahi pūtea ki ngā rōpū.

I roto i ēnei, ko:

- Kaupapa Mahinga Tari³
 - o Kaitātaki-Ā-Rohe (KAR)
 - o Wāhi Mahinga Whare Motuhake (WMWM)
- Kaupapa Mahinga Tari Kore⁴
 - o Hanga Raukaha (HR)
 - o Whakapakari Whānau – Kaupapa Mahinga me te Rangahau
 - o Whakapakari Whānau – Hākinakina me te Tikanga
 - o Ngā Hua Whanaketanga Ā-rohe (NHWA)
 - o Tuku Rawa Hāngai mo ngā Hua Ā-Rohe (TRH)
 - o Rōpū Tāpoi Ā-rohe Māori (RTAM)

KAUPAPA MAHINGA

Kaitātaki-Ā-Rohe (KAR)

I te tau 2004/05, \$2.941 i whakapaua o te putea \$3.713. Hui katoa e 50 ngā kaimahi whanaketanga Māori KAR i whakatinana i ngā mahinga i whakakaha i te whanaketanga Māori. Ko te whai tuatahi a Te Puni Kōkiri kia 55 ngā kaimahi whanaketanga Māori hei tautokona.

3 Ka utua ngā Kaupapa Mahinga Tari mai i te Pūtea Wehenga Tari Take Māori: Whakahaere Mahinga

4 Ka utua ngā Kaupapa Mahinga Tari Kore mai i te Pūtea Wehenga me te Whakapaunga Tari Kahore he Take Māori

I whakahaeretia te kaupapa mahi KAR ki te hanga i tētahi taiao ka taea te kāwanatanga ki te mahi tahi ki ngā whānau, hapū, iwi, rūpū me ngā hapori Māori, ki te whakamahi i a rātou hiahia mā roto tautoko o tētahi kaimahi whanaketanga Māori. Mo tēnei, mā tēnei kaupapa mahi anō e whakaiti i ngā rerekētanga.

I whakautu hāngai atu te kaupapa mahi nei ki te whanaketanga Māori i te whakawhiwhinga i tētahi kaimahi whanaketanga Māori, ka taea ki te:

- whakatū mai, te mahi ki te taha, me te mahi tōtika mō a rātou hapori
- whaiwāhi ki ngā mahi kakama whanake e whakahaere ana e ngā hapori
- tautoko ngātahi e Te Puni Kōkiri me te hapori.

Wāhi Mahinga Whare Motuhake (WMWM)

I te tau 2004/05, \$0.499m i whakapaua, (\$0.500m i whakamanatia). E rua te kau ngā kaupapa hanga whare i tautokona e te pūtea whakahaere a WMWM, kei runga ake tēnei i te maha i whāia, e iwa, mō te tau.

Te whāinga tuatahi a WMWM, ko te whakatika i ngā hiahia whare whakaaro pono, i roto i te Wāhi Mahinga Whare Motuhake, mā te whakarite me te whakarawa tētahi hapū, iwi, me tētahi whakautu hapori tika.

He whāinga tuarua ko te whakapūmau i puta mai i ia mahinga whare he mahinga e ōrite ana ki ngā whāinga kaupapa here hapori a te kāwanatanga, pērā i te hauora, te āhua rāpu mahi, ngā huarahi whakangungu pai ake mō ngā hapū, iwi, ngā mema hapori kāinga, me te whakaiti i ngā rerekētanga.

Hanga Raukaha (KM)

I te tau 2004/05, e rua ngā wehenga moni Tari Kore i roto i te mahinga Hanga Raukaha; Aromatawai Raukaha (\$1.1m i wehea) me te Hanga Raukaha ki roto i ngā Hapori Māori (\$7.5 i wehea). I whakamahia ēnei wehenga ki ngā mahinga e whai ake nei:

Hanga Raukaha - Whānui

I te tau 2004/05, \$6.6m i whakamanatia, ka whakapikia kia \$7.5m i waenga i te tau, \$7.464m i whakapaua. Te hiahia tīmatanga ki te tautoko kia 700 ngā kaupapa, he hiahia kiri māriu. Hui katoa e 513 ngā kaupapa i whakaētia e ngā paearu mō te tuku pūtea. Mō ēnei, e 223 ngā kaupapa i raro i te \$2000, me ngā kaupapa 290 i whiwhi pūtea i waenga i te \$2000 me te \$150,000.

Te whāinga tuatahi o te Hanga Raukaha he whakapakari i te kaha o te whānau, hapū, iwi, ngā rōpū me ngā hapori Māori. Mo tēnei, ka mahi anō tēnei kaupapa ki te whakaiti i ngā rerekētanga. Tētahi arotahi take nui mō te pūtea hanga raukaha ko te tautoko i te whanaketanga o ngā rautaki, ngā anga, ngā pūnaha, me ngā pukenga ka kaha ai te Māori ki te whakatutuki i a rātou ake tūmanako.

Ko te raukaha i te āwhina a Te Puni Kōkiri ki te hanga, kō tērā raukaha o ngā whānau, hapū, iwi, ngā rōpū me ngā hapori Māori, ki te whakanoho pai, me te whakamahi i a rātou ake huarahi wātea me ngā wero.

Hanga Raukaha – Whakapakari Whakahaere me ngā Whakahaere Poari (WWWP)

I te tau 2004/05, \$2.0m i wehea whakaroto, \$1.127m i whakapaua, me te \$800,000 toenga i whakawhitia ki te Kaupapa Mahi Hanga Raukaha – Whānui.. Hui katoa e 53 ngā rōpū i arotaketia mā roto i tēnei kaupapa mahi.

Te whāinga tuatahi o te kaupapa mahi ki te:

- whakapūmau ngā rōpū Māori e tuku ana i ngā kanataraka ratonga kāwanatanga kia eke ki ngā huanga kairangi pai me te tuku tōtika atu ki a rātou kaipupuri pānga
- takoha atu ki te tipuranga o ngā rōpū Māori pakari ka taea te whakatinana i ngā whāinga rōpū me te hopu i ngā hurahi wātea kei mua, āpiti atu ki te whakaiti i ngā rerekētanga.

Ko ngā rōpū i whāia ko ērā rōpū Māori e:

- whakahaere ana i roto i ngā wāhanga whakapakaritanga me te whakatūtanga o te hurihanga oranga pakihī
- pupuri mana whakahaere nui ana mō te tuku ratonga, me te whakahaere taputapu rānei
- whakahaere ana i ngā moni whiwhi ā-tau e \$800,000 neke atu rānei, mō ngā kanataraka ratonga ki te kāwanatanga.

I whakawhiwhia e tēnei kaupapa WWWP he tātaritanga matatapu wehe kē, ki ngā rōpū, mō a rātou mahinga ki roto i ngā wāhi whakahaere take nui.

Whakapūmau Whānau – Kaupapa Mahinga me te Rangahau (WWKMR)

Ko tēnei kaupapa mahinga e pā ana ki te whanaketanga, me te whakapakaritanga o ngā whānau hei whakaū i a rātou ake pūmanawā nohopuku hapori, tikanga, ōhanga, ā, kua papangia i runga i te whakamātau i te whakapae ko ngā whānau tonu he wāhanga uho o te hapori Māori.

Ka taea te kī, ka āhei atu ngā mahi whakapakari whānau ki te whakapakari i ngā papa o te hapori Māori, me te tautoko i te whanaketanga Māori. Ka whakaū e ngā whānau angitu tā rātou ake pūmanawā nohopuku, ā, mā konei ka tau ake ki te angitu tino pai, tauwhiro, mō ngā hapori kei roto rātou e noho ana.

I runga i ēnei whakaaro, ko ngā mōhiotanga kia mārāma atu mō te whanaketanga kaupapa here hāngai, ko te mōhio ko wai ngā whānau, he aha a rātou whakatau mō te angitu, he aha ngā tohu e toitoi manawa ana i a rātou, pēwhea ai rātou e whakaine i a rātou ake huanga, me te āhua o ngā whakahaere e whāia ana e ēnei rōpū. He nui tonu ngā rawa me whakapaua ki runga i te whakaaro pūmau, ko ngā whānau tonu te wāhanga uho o te hapori Māori, ki te whakamātau i tēnei kaupapa, me te hanga kaupapa here e hāngai ana ki ngā huanga. Nā te kōkiri, WWKMR i para i tēnei huarahi mō Te Puni Kōkiri.

I te tau 2004/05, i raro i te WWKMR, i mahi ngātahi a Te Puni Kōkiri, me ngā kaiwhakanao, e 50, (ngā rōpū mana whakahaere wi, me ngā rōpū Māori), ki te hono atu ki ngā whānau hei whakamātau, hei whanake, hei rapu i ngā mahinga whakapai, ka tau hāngai atu ki te tipuranga me te whanaketanga whānau. Ko te hiahia ka takoha atu ēnei mahinga katoa a WWKMR ki ngā mahi whakatuakiri, ngā mahi tautoko i ngā mahinga whakapakari whānau.

Te kau mā tahi o ngā mahinga 13, i whakahaeretia i runga i ngā rohe 10, a Te Puni Kōkiri, atu ki te 30 o Pipiri 2005, e \$8.119m o te pūtea whakamana \$8.500, i whakapaua. I hikina ngā mahinga 2, atu ki te tau 2005/06. I roto i ngā mahinga i whakahaeretia, ko; te hononga whānau, kōkiri whanaketanga whānau ā-kainga, hinonga whānau, whanake reo Māori whānau, hapori akoranga, akoranga tamariki kōhungahunga, me ngā rawa taiao – whakataunga tōpū.

Ko te hiahia a te tau 2005/06, he whakawhiwhi ara ki ngā whānau, me rātou e mahi ana ki te taha o ngā whānau, ki te rangahau hohonu i ngā momo huarahi rerekē mō te whanaketanga whānau. Me te whakaaro, mā ēnei whakaritenga e whakawhiwhi pāinga wā roa, mō ngā whānau. I runga atu i tēnei, mā te

whanaketanga o ngā pūrongo, ngā mahere, me ngā kaupapa, mā konei e whakawhiwhi i te papa mō ngā whakataunga mahinga ake a Te Puni Kōkiri, hei ngā tau whakamana pūtea kei mua.

Whanaketanga Hākinakina me te Tikanga Whānau

I te tau 2004/05, \$1.7m i whakamanatia, \$1.685 i whakapaua. Neke atu ki te 100 ngā mahinga Whanaketanga Hākinakina me te Tikanga Whānau i haumitia e Te Puni Kōkiri, ki te motu, ki ngā rohe, me ngā kāinga.

I te arotahi atu tēnei pūtea kairapu ki te whakawhiwhi tautoko me ngā āwhina ki ngā mahinga ārahi hapori me ngā mahinga papa hākinakina, papa tikanga, e hāngai atu ana ki te whakapakari whānau.

I te arotahi atu ngā mahinga ki te rangahau, te whakamahere, te whanake, me te tuku i ngā kaupapa mahi me ngā tauwhāinga e whakatairanga ana i te whaiwāhitanga o te Māori ki roto i te hākinakina me te tikanga; me te āpiti atu i ngā tautoko akopono mō te whanake ahumahi, kapa haka, whetiwara manu kōrero, me te tautoko hoki i ngā mahi kakama pērā i te Taa Moko (mahi toi ki te moko Māori), te Mau rākau (te mahi toi ki te whawhai me te wawao tinana) me ngā wānanga raranga (ako i te raranga Māori).

Ngā Hua Ā-rohe (NGA)

I te tau 2004/05, \$4.297m i whakamanatia ka whakapikia ki te \$5.438m i waenga i te tau, \$5.254m i whakapaua. E 20 ngā mahinga i whiwhi moni.

Te whāinga tuatahi a Ngā Hua Ā-rohe(NGA), ko te whanake hapori Māori tukutahi, mā te hoatu moni ki ngā mahi kei ngā rohe kāinga a te Māori. I āwhinatia e te NGA ngā take whakahirahira i kitea e ngā whānau, hapu, iwi, ngā rōpū me ngā hapori Māori, ka tautoko i a rātou mahi ki te whakatinana i a rātou whāinga wā roa. Me te whakaiti i ngā rerekētanga.

Tuku Rawa Hāngai (TRH)

I te tau 2004/05, \$4.2m i whakapaua, (\$6.550 i whamanatia ka whakapikia ki te \$7.114m i ngā Whakaaetanga Tāpiri a te kāwanatanga. 11 ngā rōpū i te whaiwāhi ki ngā kaupapa mahi TRH. I hangaia tēnei kaupapa ki te whakamātau i tētahi āhuatanga tuku pūtea e pūmau ana kia haere tika tonu ngā rawa ki ngā hapū, iwi, me te Māori ki te tautoko i a rātou ake whāinga me ngā hiahia.

I te marama o Haratua 2005, i whakaae ngā Minita ki tētahi whakawhiti ā-kaupapa, o te \$2.852m atu ki te tau moni 2005/06, tohutorominiti a te Komiti Matua a te Pāremata (05) 17/7.

Rōpū Tāpoi Ā-rohe Māori (RTAM)

I te tau 2004/05, \$0.281m i whakamanatia, \$0.277 i whakapaua ki te tautoko i ngā Rōpū Tāpoi Ā-rohe Māori e 11. Ko te hiahia tuatahi a Te Puni Kōkiri kia 12 ngā RTAM hei tautokona.

Te tikanga o tēnei pūtea he āwhina i ngā RTAM ki te hanga mahere hei:

- whanake raukaha pākihi ki roto i ngā pākihi tāpoi Māori
- whakakaha i te kairangi a te tāpoi Māori ki ngā rohe
- whakatairanga ngā pānga o te tāpoi Māori ki roto i ngā rōpū ahumahi take nui
- whakapakari honohononga i waenga i ngā rōpū tāpoi ā-rohe e tū ana.

Kounga

I aroturukitia tēnei mā te;

- tuku pūrongo mō ngā haerenga me ngā whakatutukitanga o ngā kaupapa mahi i roto i ngā pūrongo ā-marama, mai i ia tari ā-rohe, ki te Tari-ā-motu.
- Aroturuki i ngā kaupapa mahi (pānuitia p 22).

Rangahau Kaipupuri pānga

- Kōrero whakautu kōkau i tukuna mai i te kōtuitui o ngā Kaiwhakarite (kaimahi takiwā) me ētahi ake kaimahi kei ngā rohe, mā roto i ngā arotakenga kaupapa mahi, i konei ka whakamōhio i a mātou honohononga mahi ki ngā whānau, hapū, iwi, ngā hāpori me ngā rōpū Māori.
- I riro mai ētahi kōrero urupare e whakamōhio ana te manawa pai o ngā ratonga whakawhiwhi, mai i ngā huihuinga a ngā kaipupuri pānga i ia rohe, i tae atu te Tumuaiki Whakahaere.

Tūranga Kounga

- I te āhua rite tonu ngā mahinga ki ngā tūranga kounga i rārangitia ki roto i Ngā Aratohu Whakahaere Raukaha te pukapuka ako a Te Puni Kōkiri, e pā ana ki te whakahaere i ngā kaupapa mahi hanga raukaha.

Wā Tika

I aromatawaia ngā mahi tuku motuhake i roto i te Mahere Whakaputa a Te Puni Kōkiri 2004/05, mā te whakatauritenga atu ki ngā aukatinga i te takoto i roto i te mahere whakaputa, i whakarerekētia i waenga i te tau. Kua tukuna he kōrero mō ngā wā tika e pā ana ki ngā aukatinga i takoto, mō ngā whakaputa motuhake i roto i tēnei Pūrongo Ā-tau.

Ratonga ki te Kaitiaki Māori

I whaiwāhi tēnei momo whakaputa ki te whakawhiwhinga ratonga tari motuhake ki te Kaitiaki Māori āpiti atu ki ngā kaimahi, whare tari, me ngā tautoko rangatōpū.

E tū ana te Kaitiaki Māori (i whakatūria i raro i te Ture Kaitiaki Māori 1953):

- ki te ārai me te whakapai ake ngā pānga a ngā kiritaki Māori me a rātou rawa
- ki te whakahaere i ngā whakapātanga koaro a te hea pakupaku, me ngā kaipupuri maha rawa i roto i te whenua Māori
- ki te whakawhiwhi whakahaere pai, tika, ngārahu, me te tiaki haere i ngā taonga kiritaki i roto i ngā kaupapa me ngā herenga o te kaitiakitanga me te māngaitanga.

I tonohia te arotakenga a te Kaitiaki Māori i ngā ratonga a Te Puni Kōkiri, ka whakamōhio mai ia i te tino whakaea ia ki te taumata ratonga i whakawhiwhia, i whakaaetia, ki Te Puni Kōkiri. Me te utu mō ngā ratonga i whakawhiwhi mai, kahore i nui ake ki te utu mō ngā ratonga i whakaritea ki te Kaitiaki Māori, i te fīmatanga o te tau.

Mahinga Whakarato Take Pāremata

I tutuki i a Te Puni Kōkiri ngā arotau whakarato take pāremata i runga i ngā momo whakaputa katoa, i whakaāetia, e rārangi ana ki raro, mō te 87 ōrau (te hiahia kia 95 ōrau) o ngā take i te tau 2004/05. He pai ake tēnei ki ngā mahinga o ngā tau 2002/03 me 2003/04, i reira e 79 ōrau, e 86 ōrau ngā pukapuka pāremata i oti i mua o ngā arotau. Ko te hiahia ka piki tonu tēnei ia.

Ngā Whakaputa	Wā Whakatutuki
Whakautu pukapuka Pāremata	I mua i te kotahi marama
Pātai Pāremata	I whakaae ngātahitia
Hui tohutohu	I whakaae ngātahitia
Tuhinga whaikōrero	I whakaae ngātahitia
Tono Ture Pārongo Pāremata	I mua o te 20 rā mahi
Tāpaetanga Pāremata	I whakaae ngātahitia
Whakahē ki te Māngai Whai Mana	I mua o te 20 rā mahi
Pūrongo ki te Komiti Take Māori	I whakaae ngātahitia

WHAKAPŪMAU KOUNGA

Te whakaaro a Te Puni Kōkiri mō te kounga, he whakapūmau kei te tūranga rite ngā tohutohu ā-tuhi, ā-kōrero, kei te rite ki ngā hiahia a te Minita mō ngā Take Māori.

I tonohia he whakautu tika mai i te Minita, mā tētahi rangahau, i tōna arotakenga o te nui, te kounga, me te taenga moata o ngā tohutohu kaupapa here (āpiti atu ngā tohutohu kōrero). I runga atu i tēnei tonu ki ngā huihuinga i waenga i te Tumuaiki Whakahaere, me āna āpiha, me te Minita, i te tau, i konei i tuku kōrero atu, i whiriwhiritia ngā take me ngā mahinga tuatahi. I kī te Minita i manawa pai ia i te haere “pai” o te kounga me te taenga moata atu o ngā tuhinga ki a ia. I runga i te tauine 1 – 6, ka tau te “pai” ki te 4, he hē rawa te 1, he tino pai rawa te 6.

Kounga

Āpiti atu ki te rangahau manawa pai a te Minita, i arotaketia, i te tau, e tētahi tohunga wehe kē, mō ngā kaupapa here Rāngai Tūmatanui, ngā tohutohu kaupapa here (e whakamāramatia ana e ngā āhuatanga kounga) i whakaotia, i tukuna. I arotaketia e te kaititiro ngā tohutohu kaupapa here ā-tuhi i hangaia e Te Puni Kōkiri, mō ngā momo whakaputa kaupapa here e toru, i ngā wā e toru.

I papangia tēnei arotake i runga i te kounga o ngā paearu kua whakarārangitia i roto i te Pukapuka Whakapūmau Kounga a Te Puni Kōkiri. I whiriwhiria matapōkere ngā tuhinga arotake, mō tā rātou mōhiotanga pūmanawā nohopuku rānei.

Mehemea i tau te āhua o tētahi tuhinga kaupapa here ki raro i te manawa pai, i whakahautia te kaiwhakahaere ki te tuku whakautu, whakamāramatanga rānei, ki te Hekeretari Kaitiriwā Kaupapa Here, mō te kounga o te tuhinga.

I whakatakototia e te kaiarotake wehe kē, te kounga o ngā tohutohu kaupapa here i runga i te tauine 1 ki te 6, ko 1 = hē rawa, 2 = hē, 3 = āhua pai, 4 = pai, 5 = pai rawa, 6 = tino pai rawa.

Paearu Arotake	Whāinga	Paneke
Whāinga poto	3.00	3.65
Arotau	3.00	3.00
Tōtika	3.00	3.16
Huarahi	3.00	3.07
Whiriwhiringa	3.00	3.06
Whakaharataunga	3.00	3.29
Whakatakotoranga	3.00	3.21
Tau Toharite	3.00	3.21

I runga atu i tēnei, i te tautoko ngā tohutohu kaupapa here katoa i ētahi whakahaere kounga, kua rārangitia ki raro nei:

- arotake rōpū ōrite whakaroto
- te whakapiri ki ngā tūranga rite a te *Pukapuka Whakapūmau Kounga a Te Puni Kōkiri* kei reira e whakamārama ana ngā tūranga kounga; e whakamārama ana i pēwhea ngā tūranga e whakatau, e arotake, e whakapūrongo; e whakamārama ana i ngā whakahaere o te hanga tohutohu kaupapa here kounga; me te whakatakoto i ngā tautoko rangatōpū mō ēnei mahinga me ngā whakahaere
- i te tautuku katoa ngā tuhinga ki te Komiti Matua a te Paremata ki te *Pukapuka Ako a te Komiti Matua a te Pāremata*.

Rangahau Kaipupuri Pānga Whakawaho

I whakahaeretia he rangahau tirohanga wehe kē, mā te waea, i Whiringa-ā-rangi 2004, ki te tango urupare mai i ngā kaipupuri pānga me ētahi ake tāngata mō a rātou manawa pai ki Te Puni Kōkiri.

Tūturu, i whiriwhiria ngā kaiutu hei māngai mō ngā pokapū i mahi tahi ki Te Puni Kōkiri, ngā rōpū Māori, me te hunga pāho. I runga atu, i uiuitia ētahi kaipōti Māori hei māngai mō te minenga Māori whānui.

I tukuna ētahi kitenga take nui i raro i ngā tikanga o ngā whāinga a te rangahau tirohanga, heoi, e rua ngā whakataunga i puta, arā, kia whai a Te Puni Kōkiri ki te:

- mahi haere ki te whanake i āna honohononga kaipupuri pānga
- whakahaere kaha ake i tōna tuakiri

Kirimini Mahinga

Ka hangaia he kirimini mahinga mō ngā kaimahi ia tau. Ko ngā kirimini mahinga nei ka whakatakoto i ngā arotakenga mahinga ia ono marama, mō ia kaimahi (i ngā marama o Hakihea me Pipiri). Ko ngā tohungatanga uho kei roto i te kirimini, koia nei kua kitea ko ngā pukenga takenga ki ngā mahi a Te Puni Kōkiri. He wāhanga whakahirahira tēnei whakahaere ki te aromatawaitanga o te takoha o ia kaimahi ki ngā mahinga a Te Puni Kōkiri, ā he waka hāngai tēnei mō te whakapai haere i ngā mahinga.

Pūrongo mō te Hāngaitanga o te Whakaiti Ritengakore

Kei te takoha atu a Te Puni Kōkiri ki ngā kaupapa here me ngā mahinga whakaiti ritengakore, a te kāwangatanga, mā te whakahaere mahinga pūtea mō te whanaketanga hapori; mā te aroturuki i te hāngaitanga o ngā pokapū kāwanatanga; me te tuku tohutohu mō ngā kaupapa here e pā ana ki te oranga o te Māori.

Ka whakakahatia te whakaitinga ritengakore mā te hanga i te tū pakari. I runga i tēnei, kua hangaia a mātou mahinga pūtea hapori (kua rārangitia, kua whakamāramatia kei whārangi 30-33 o tēnei pūrongo) ki te whakapakari i te kaha o ngā whānau, hapū, me ngā hapori Māori, ki te ārahi i tā rātou ake whanaketanga, i raro i ngā momo ārahi rerekē.

Heoi, ko te whakaaro, e kore e taea e te arotahi motuhake ki runga i ngā rerekētanga me ngā ritengakore anake, te whakatinana i te pūmanawā nohopuku o te Māori, mō te whakaea ā-tangata me te takoha atu ki Aotearoa. I waenga i te tau 2004/05, i hangaia e Te Puni Kōkiri te Huarahi Pūmanawā Nohopuku Māori, hei whakatinana i te Pūmanawā Nohopuku Māori, ko tēnei ka ārahi, a tōna wa, i tētahi arotahi pakari ake ki te tautuhi i ngā hua o te angitu Māori, me te whakamahi i tēnei mātauranga hei tohotohu i te whanaketanga kaupapa here ki roto i te Rāngai Kāwanatanga whānui ake.

I raro i te Huarahi Pūmanawa Nohopuku, kei te mahi mātou ki te taha o ngā rōpū kaihoatu kua whakatūria, kia whai akoranga mātou, mai i ngā hapori Māori, mō te wāhanga hei mahinga mā te kāwanatanga ki te āwhina kia tutuki a rātou whāinga.

Ka whakamahia ngā akoranga mai i ēnei mātauranga, ki roto i a mātou tohutohu e hāngai ana ki te hanga i tētahi rautaki ara-angitu, ki te whakaiti ritengakore, ki roto i ētahi ake pokapū.