



14 DEC 2017

File Ref: OIA 36427

Tēnā koe

Official Information Act request

Thank you for your Official Information Act request, received on 15 November 2017. You requested information on the following:

1. *What are the numbers of staff that operate out of your Auckland Regional Office, what do they do, please provide an Organisational Chart.*
2. *Please divide the Regional Budget into Capex and Opex.*
3. *In terms of Capex please define what those dollar values are expensed on and in terms of Opex equally the same.*
4. *I turn now to any Contract or Consulting work led by your Regional Office. Please advise expenditure on Contractors and all Consultants contracted out of your Office directly or out of Head Office where work is funded but applied into the Auckland District?*
5. *In terms of all Contracting and Consulting work led by yourself or Head Office please advise the dollar values that were tendered. Please advise the dollar values that were provided to Contractors or Consultants without any pre-selection process?*
6. *In regard discretionary funds provided external to TPK's internal Operations as addressed above, please provide the Programmes that you received funding for from Head Office. Please advise how those funds are placed out to the Auckland Community, what are they deployed for, how much and in what areas?*
7. *Should Head Office deploy funds into the Auckland Region please advise how much, to whom, for what and where?*
8. *Please advise their Head office vote to fund Regional activities for the full ministry. Please advise the policy and algorithm utilised by your Head Office in the distribution of those funds to Māori throughout the country.*
9. *Please provide the Regional Budget Opex, Capex, Contractor and Consultant directly through the region or alternatively from Head Office into each Region.*



10. Please provide any policy or supporting algorithm that supports this Distribution model.”

On 20 November 2017, we advised you:

1. We would respond to your request in accordance with the financial years as follows:
 - 1 July 2014 – 30 June 2015
 - 1 July 2015 – 30 June 2016
 - 1 July 2016 – 30 June 2017
2. We also advised you that with regard to part (9) of the request, our regional configurations changed in the years 2014 and 2015, from ten regions to six. Due to this restructure, we can provide regional high-level budget data from 2015/16 onward.
3. We also extended the time available to respond to your request to Friday 22 December 2017 in accordance with section 15A(1)(b) of the Act. I am now in a position to respond in full.

I have responded to your questions below in the order you presented them in your request.

Question 1

Attached, as **Item 1** is the Organisational Chart for the Tāmaki Makaurau Regional Office. The Regional Office staff work across a range of kaupapa.

Questions 2 and 3

Capital is managed and held centrally. The table below is the **Auckland Region Departmental Expenditure and Current Year Approved Budget**:

	\$000			
Operating Costs	2014/15 Expenditure	2015/16 Expenditure	2016/17 Expenditure	2017/18 Budget
Personnel	838	842	1,068	1,269
Direct Costs*	30	83	63	92
Indirect Costs**	349	292	340	345
Total	1,217	1,217	1,472	1,705

* Direct Costs include all non-personnel expenditure that is at the discretion of the Regional Manager. For example, travel, hui costs, and local publications.

** Indirect Costs are items that are managed on the region’s behalf from National Office. For example, rent, depreciation and capital charge.

Questions 4 and 5

There have been no consultants or contractors working on Auckland specific matters in the Regional Office or Head Office of Te Puni Kōkiri for 2014/15, 2015/16, 2016/17 and 2017/18 financial years.

Question 6

The Tāmaki Makaurau Regional Manager had an allocation with respect to three funds during the 2014/15, 2015/16 and 2016/17 financial years as set out in the table below. This allocation included the discretion to allocate up to \$10,000 per project or initiative. Funds were placed out into the Tāmaki Makaurau region through an application process.

Fund	\$		
	2014/15	2015/16	2016/17
Rangatiratanga Grants Financial assistance to promote and enhance initiatives for the social, economic and cultural advancement of Māori	-	37,687	37,687
Māori Development Fund (Te Pū Harakeke) Small contracts to support local activities related to Matariki, the development of Maara Kai and sponsorship of local events	-	-	278,862
Moving the Māori Nation Supporting organisations and whānau to provide initiatives that encourage whakapakari tinana and create opportunities for whānau to pursue wider Whānau Ora outcomes	-	-	49,930
Total	-	37,687	366,479

Question 7

Please refer to the responses for Question 2 and Question 6 about Non Departmental and Departmental Costs.

The table below identifies the non-departmental funding approved at the national office level for projects and initiatives within the Tāmaki Makaurau region for each financial year. National office advisors work closely with the regional office in developing funding recommendations. A detailed breakdown of the allocated funding identifying the project or initiative, who received the funding and how much, is set out in the appendix.

In addition to this funding, Te Puni Kōkiri also funded nation-wide initiatives where part of the initiative was delivered in Tāmaki Makaurau. It is not possible to provide a breakdown of the proportion of these initiatives that were delivered in the region so the total contracted amount for these initiatives is set out in the table below and in the appendix.

	\$000		
	2014/15	2015/16	2016/17
Funding allocated for projects and initiatives in Tāmaki Makaurau	3,792	3,043	3,450
Funding allocated for national projects	3,287	4,294	2,377

Question 8

All non-departmental expenditure is distributed according to the Te Puni Kōkiri's overarching investment approach, which responds to regional and local needs.

For further information please refer to the Vote Māori Development reports in relation to non-departmental appropriations for the years ending 30 June 2015, 30 June 2016 and 30 June 2017. You can find these reports at the following links:

<http://www.tpk.govt.nz/en/a-matou-mohiotanga/corporate-documents/vote-maori-development-ministers-reports-2015>

<http://www.tpk.govt.nz/en/a-matou-mohiotanga/corporate-documents/vote-maori-development>

<http://www.tpk.govt.nz/en/a-matou-mohiotanga/corporate-documents/vote-maori-development-2017>

The table below is of the **Regional Departmental Expenditure and Current Year Approved Budget***:

	\$000			
	2014/15 Expenditure	2015/16 Expenditure	2016/17 Expenditure	2017/18 Budget
Operating Costs				
Personnel	7,554	6,641	7,992	9,671
Direct Costs	616	826	1,037	1,746
Indirect Costs	2,656	2,400	2,726	2,549
Total	10,826	9,867	11,755	13,966

* Includes information related to the following Regional Partnerships teams only: Office of the Deputy Chief Executive, Te Tai Tokerau, Tāmaki Makaurau, Waikato-Wairiki, Ikaroa Rāwhiti, Te Tai Hauāuru, Te Waipounamu.

Question 9

Due to structural changes, we are only able to provide Regional Departmental Expenditure 2014/15 – 2016/17 and Regional Departmental Budgeted 2017/18 attached as **Item 2**. The information is released in full.

Question 10

For non-departmental Te Puni Kōkiri identifies investment priorities and in some cases draws on population and outcome data to inform investment decisions. Departmental budgets are allocated using a range of factors, significantly, priorities, FTE's and property footprint.

I trust you find my reply helpful.

Please note that Te Puni Kōkiri publishes some of its OIA responses on its website, after the response is sent to the requester. The responses published are those that are considered to have a high level of public interest. We will not publish your name, address or contact details.

You have the right to seek an investigation and review by the Ombudsman of this response. Information about how to make a complaint is available at www.ombudsman.parliament.nz or freephone 0800 802 602.

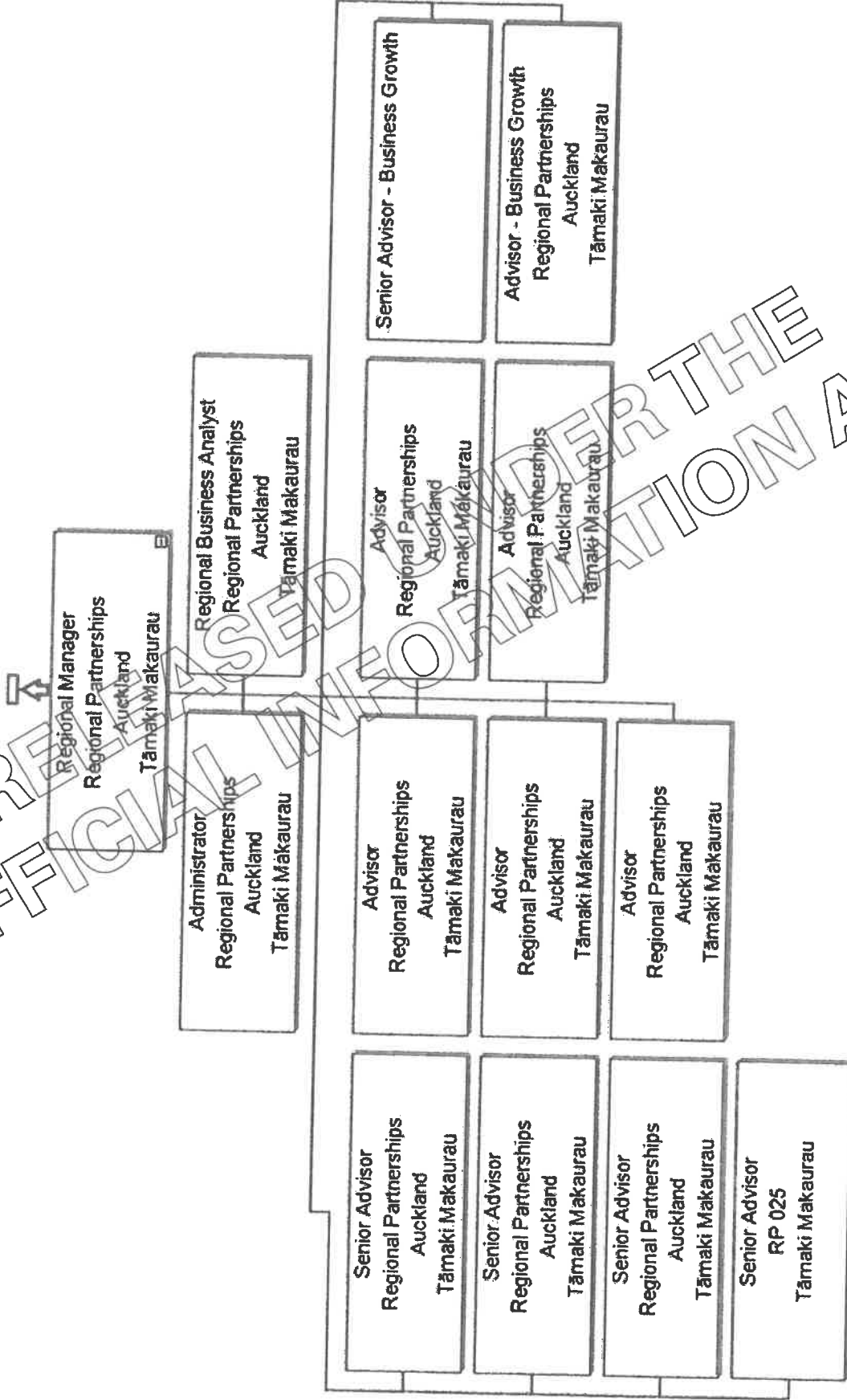
Ngā mihi

A handwritten signature in black ink, appearing to read 'Michelle', with a small horizontal line above the first letter.

Michelle Hippolite
Toihautū | Chief Executive

Information Request from

item 1



OFFICIAL INFORMATION ACT

Official Information Request from _____ - Item 2

**Table 1:
Regional Departmental Expenditure 2014/15***

Regional Teams	\$000		
	Contactors/Consultants Expenditure	All other Operating Expenditure	Total Operating
Office of the Deputy Chief Executive for Regional Partnerships	103	1,596	1,699
Te Tai Tokerau	-	832	832
Tāmaki Makaurau	-	1,217	1,217
Waikato-Wairiki		2,417	2,417
Ikaroa Rāwhiti		1,578	1,578
Te Tai Hauāuru		2,127	2,127
Te Waipounamu		955	955
Total	103	10,723	10,826

* Includes information related to the following Regional Partnerships teams only: Office of the Deputy Chief Executive, Te Tai Tokerau, Tāmaki Makaurau, Waikato – Wairiki, Ikaroa Rāwhiti, Te Tai Hauāuru, Te Waipounamu.

**Table 2:
Regional Departmental Expenditure 2015/16***

Regional Teams	\$000		
	Contactors/Consultants Expenditure	All other Operating Expenditure	Total Operating
Office of the Deputy Chief Executive for Regional Partnerships	163	933	1,096
Te Tai Tokerau	-	883	883
Tāmaki Makaurau	-	1,217	1,217
Waikato-Wairiki	-	2,209	2,209
Ikaroa Rāwhiti	-	1,440	1,440
Te Tai Hauāuru	15	1,974	1,989

Te Waipounamu	-	1,033	1,033
Total	178	9,688	9,867

* Includes information related to the following Regional Partnerships teams only: Office of the Deputy Chief Executive, Te Tai Tokerau, Tāmaki Makaurau, Waikato – Waiariki, Ikaroa Rāwhiti, Te Tai Hauāuru, Te Waipounamu.

Table 3:
Regional Departmental Expenditure 2016/17*

Regional Teams	\$000		
	Contactor/Consultants Expenditure	All other Operating Expenditure	Total Operating
Office of the Deputy Chief Executive for Regional Partnerships	202	1,081	1,283
Te Tai Tokerau	26	1,115	1,141
Tāmaki Makaurau		1,472	1,472
Waikato-Waiariki		2,581	2,581
Ikaroa Rāwhiti	8	1,715	1,722
Te Tai Hauāuru	-	2,306	2,306
Te Waipounamu	-	1,250	1,250
Total	236	11,519	11,755

Includes information related to the following Regional Partnerships teams only: Office of the Deputy Chief Executive, Te Tai Tokerau, Tāmaki Makaurau, Waikato – Waiariki, Ikaroa Rāwhiti, Te Tai Hauāuru, Te Waipounamu.

Table 4:
Approved Regional Departmental Budgets 2017/18*

Regional Teams	\$000		
	Contactor/Consultants Expenditure	All other Operating Expenditure	Total Operating
Office of the Deputy Chief Executive for Regional Partnerships	358	1,181	1,539
Te Tai Tokerau	67	1,411	1,478
Tāmaki Makaurau	-	1,705	1,705

Waikato-Waiariki	218	2,697	2,915
Ikaroa Rāwhiti	-	1,971	1,971
Te Tai Hauāuru	100	2,646	2,746
Te Waipounamu	-	1,574	1,574
Total	743	13,185	13,928

* Includes information related to the following Regional Partnerships teams only: Office of the Deputy Chief Executive, Te Tai Tokerau, Tāmaki Makaurau, Waikato - Waiariki, Ikaroa Rāwhiti, Te Tai Hauāuru, Te Waipounamu.

RELEASED UNDER THE
OFFICIAL INFORMATION ACT