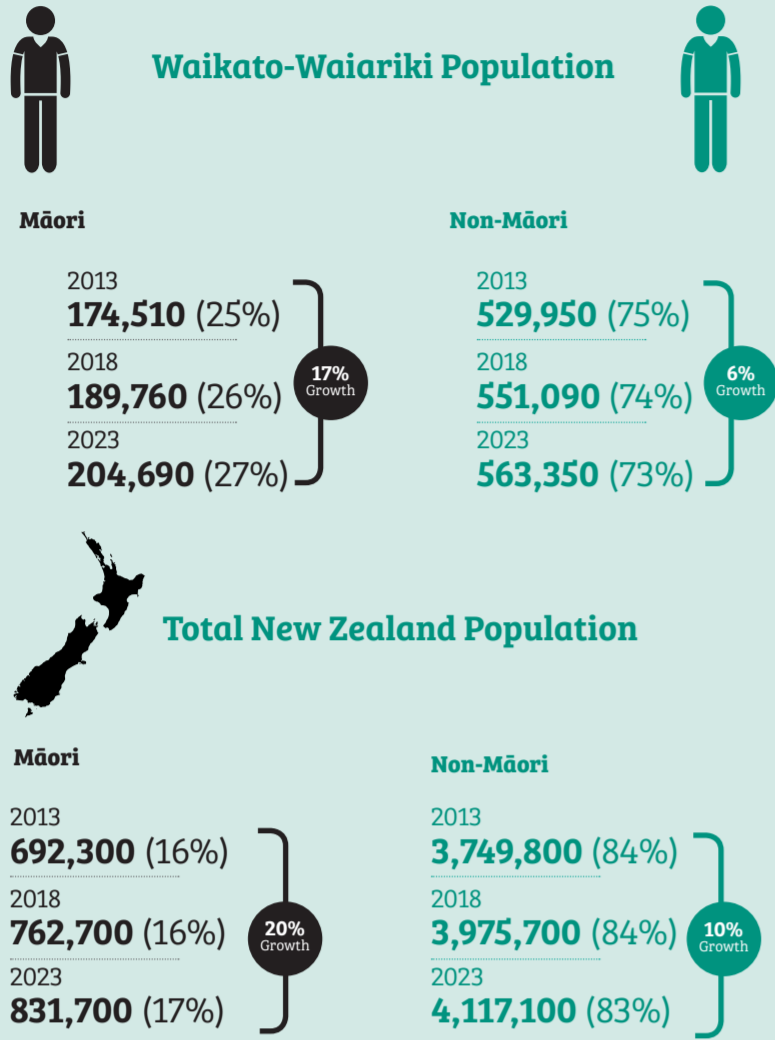


# Te Puni Kōkiri: Waikato-Wairariki Regional Profile 2017

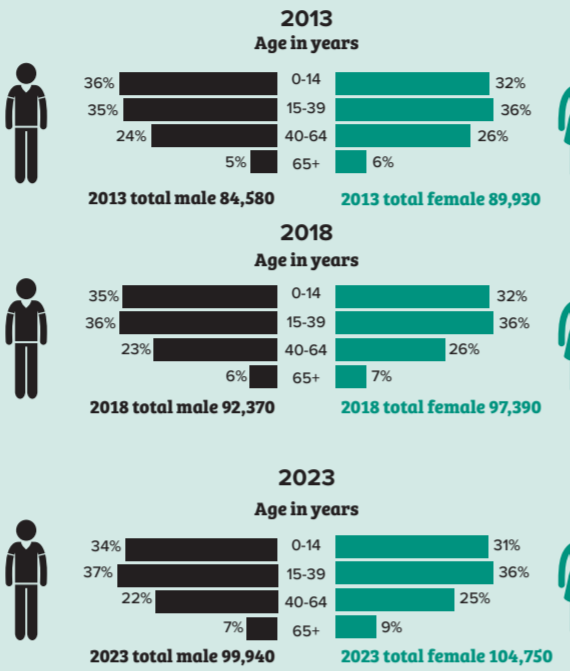
Waikato-Wairariki rohe extends from the Bombay Hills and Port Waikato in the north, extending east over the Coromandel, Hauraki plains, and Te Moana-a-Toi through to Wakatiri – the furthest point East. From there, the southern boundary draws a rough line through Te Urewera to Tongariro, then up to Pureora embracing the King Country and across to the western coastline at Mōkau.

## Demographics – Structure of Waikato-Wairariki Population 2013-2023

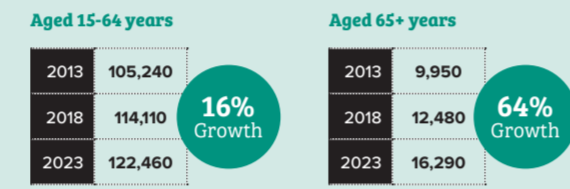
The Māori population will exceed 200,000 by 2023.



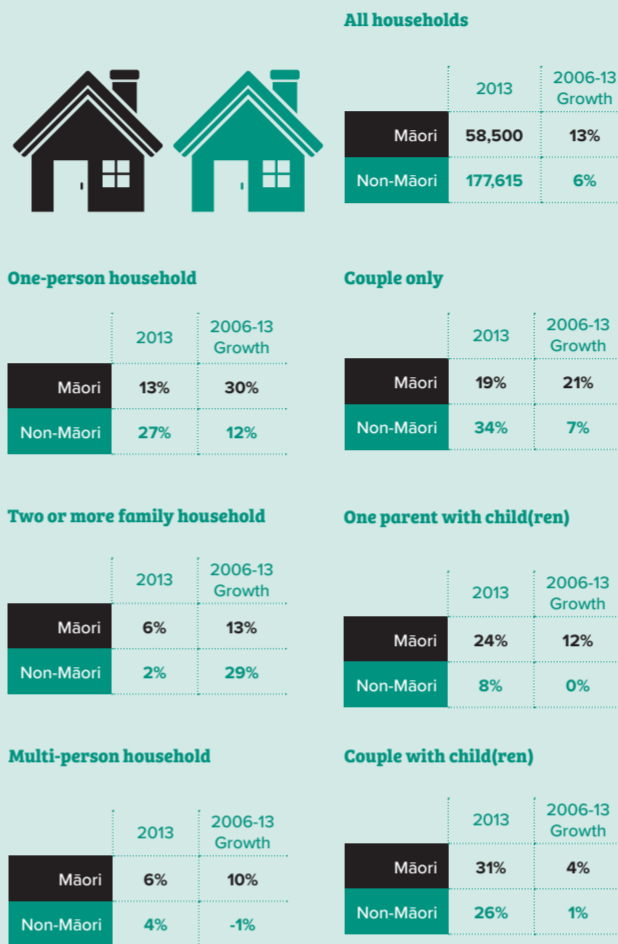
By 2023, the number of Māori aged 15 to 64 years will grow by 16%.



The number of Māori aged 65+ will increase more than 1.5 times.

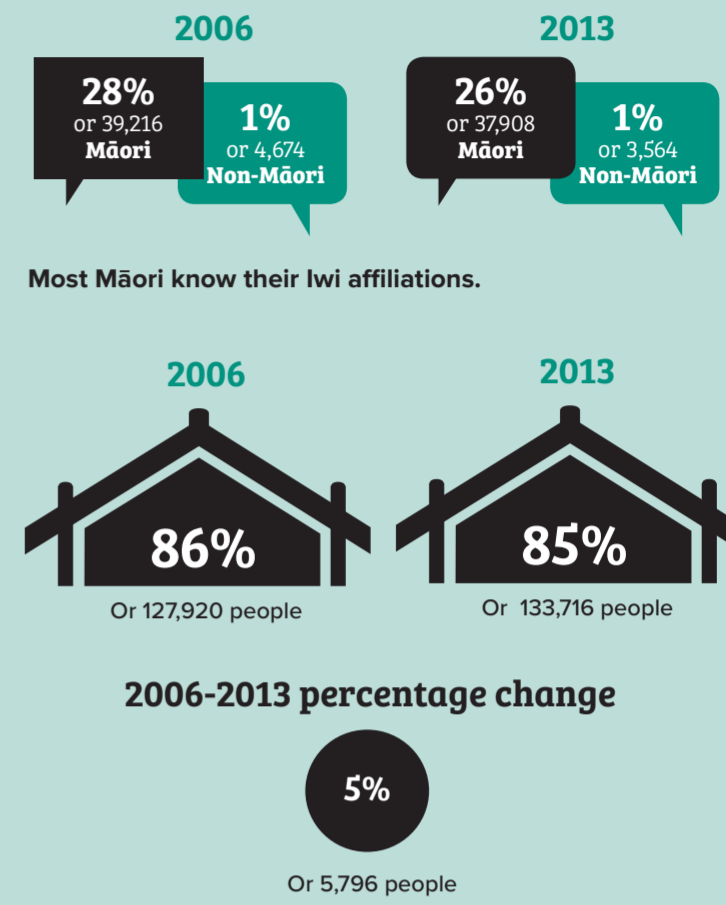


The number of Māori households has increased. The highest rate of growth was for one-person households



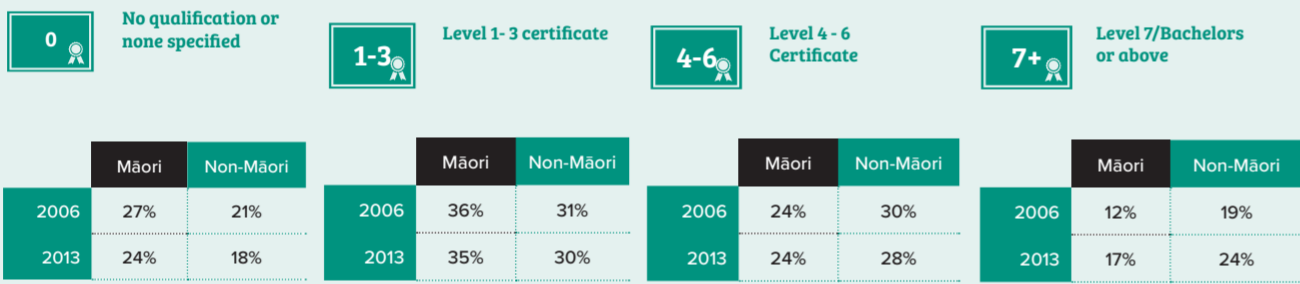
## Whakapapa – te reo Māori and Connection to Iwi in Waikato-Wairariki

Over one-quarter of Māori can speak te reo Māori. This has declined slightly.



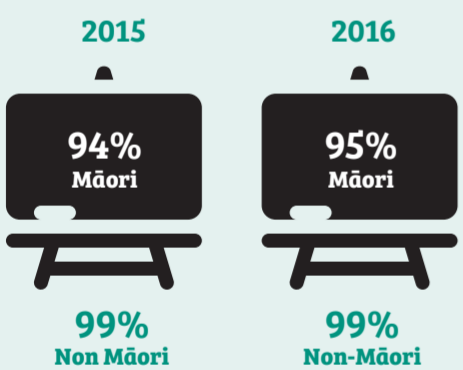
## Oranga – Whānau Well-Being & Whānau Housing in Waikato-Wairariki

More Māori households have higher qualifications at Level 7/Bachelors or above.



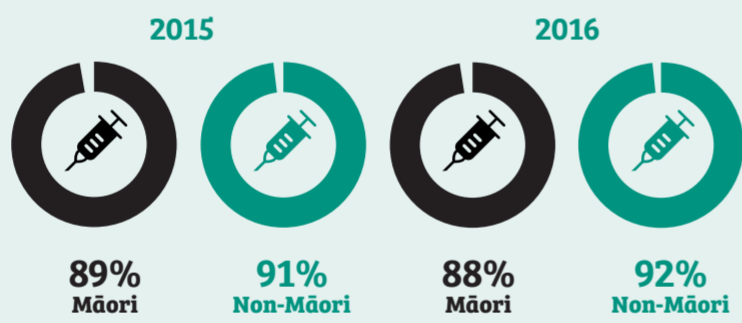
Source: Census, Stats NZ

The large majority of tamariki Māori have participated in early childhood education.



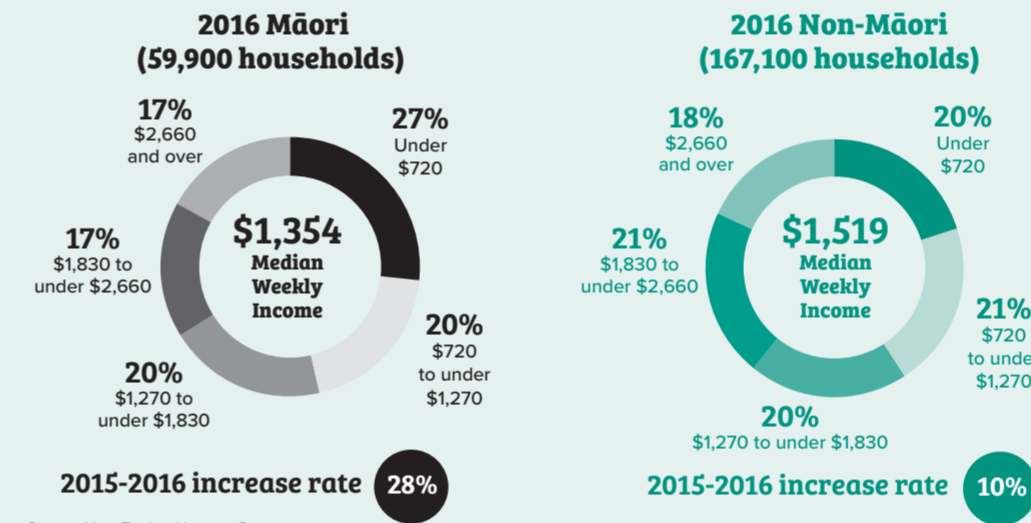
Source: Education Counts, Ministry of Education  
Notes: 1. Government's Better Public Service (BPS) target was to increase participation in early childhood education to 98% by December 2016. 2. Data as at December for each year.

Most tamariki Māori are immunised.



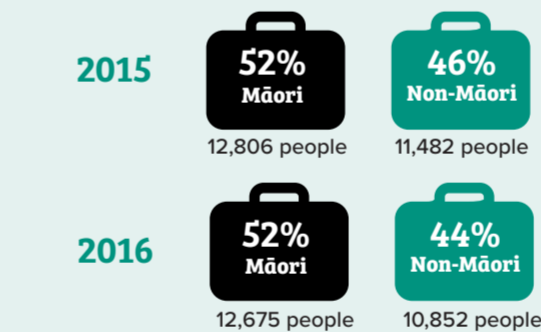
Source: National and DHB Immunisation Data, Ministry of Health  
Notes: 1. The percentages are calculated by Bay of Plenty, Lakes and Waikato DHB areas. 2. Government's Better Public Service (BPS) target was to increase infant immunisation rates to 95% by December 2014 and maintain to June 2017. 3. Data as at December for each year.

Māori household incomes have increased substantially.



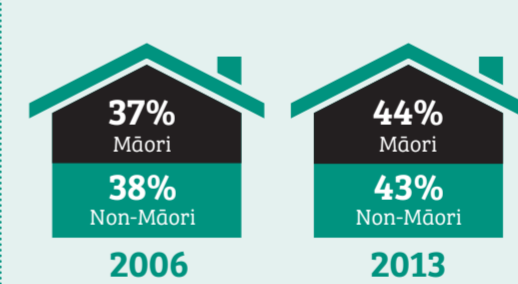
Source: New Zealand Income Survey  
Note: Data as at June 2016

The number of Māori receiving Jobseeker Support has slightly decreased.



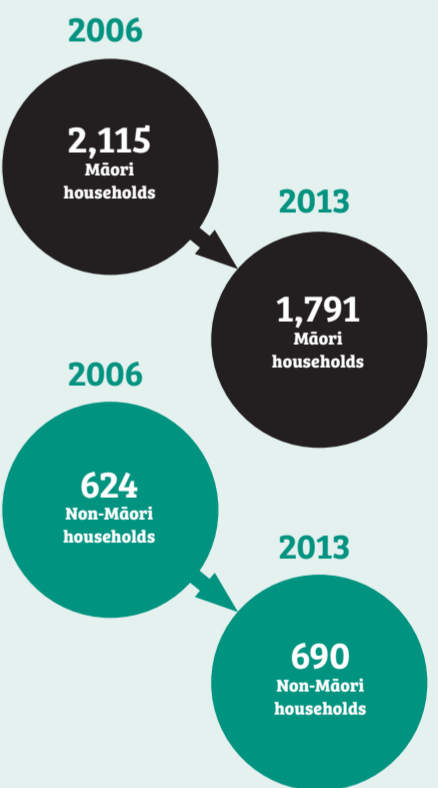
Source: Benefit fact sheets, Ministry of Social Development  
Note: Data as at December for each year

Over two in five Māori rental households are under housing stress.



Source: Census, Stats NZ  
Note: Housing stress refers to a household paying more than 30% of their household income on rental housing.

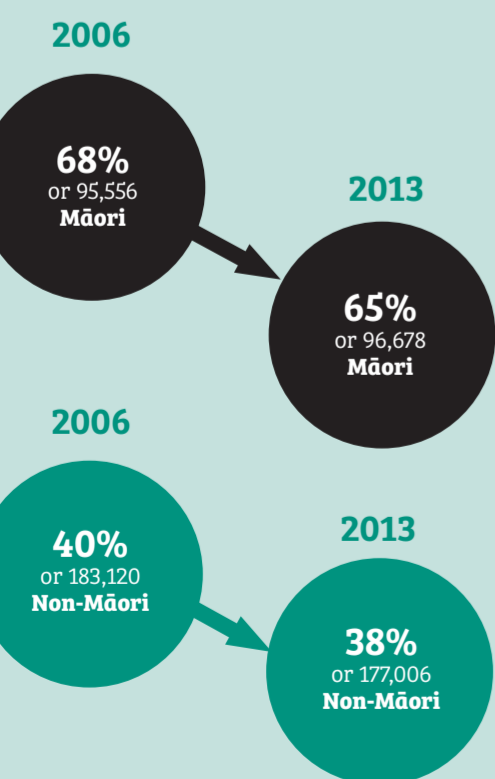
The number of Māori households needing two or more additional bedrooms has decreased.



Source: Census, Stats NZ  
Note: Based on specific criteria relevant to the number, age and sex of people per bedroom.

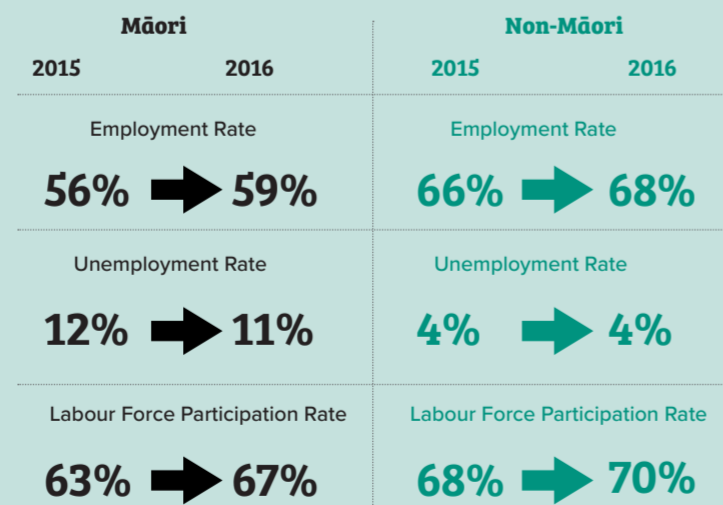
## Whairawa – Whenua & Whanaketanga in Waikato-Wairariki

Two-thirds of Māori live in highly deprived areas.



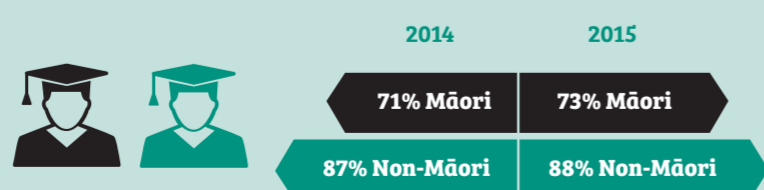
Source: Census, Stats NZ  
Note: The numbers are based on deprivation scales from 8 to 10.

Nearly six in ten working age (15+) Māori are employed.



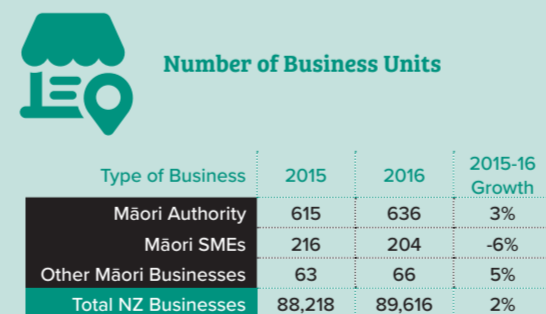
Source: Household Labour Force Survey, Stats NZ  
Note: Data as at December for each year

Slightly more 18-year-old Māori have a NCEA level 2 (or above) qualification.

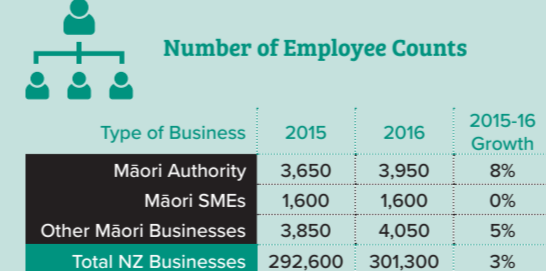


Source: Education Counts, Ministry of Education  
Note: Government's Better Public Services (BPS) target was to achieve 85% of 18-year-olds receiving NCEA Level 2 or an equivalent qualification by 30 June 2017.

More Māori authorities and other Māori businesses are operating in Waikato-Wairariki.

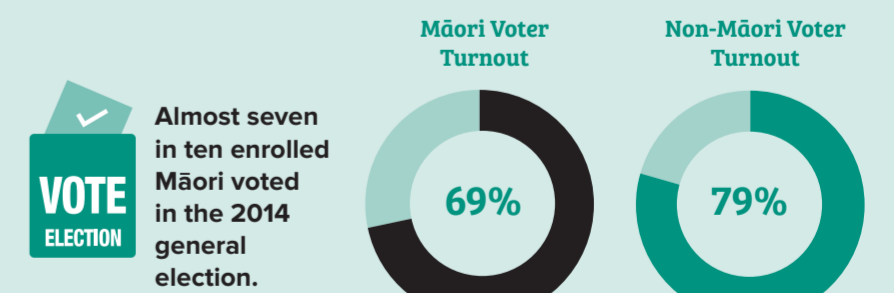


Māori businesses are employing more people.

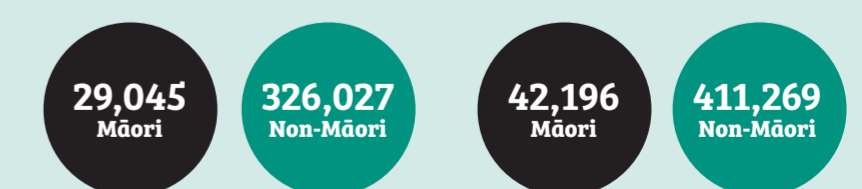


Source: New Zealand Business Demography Statistics, Stats NZ  
Notes: 1. These statistics are provisional and cover enterprises with greater than \$30,000 annual GST expenses or sales, or are GST exempt. 2. The type of Māori Business is defined in Tatauranga Umanga Māori 2016. 'Other Māori businesses' refer to the remainder.

## Whanaungatanga – Crown-Māori Relationships in Waikato-Wairariki



Total Number of Voters



Source: Electoral Commission  
Note: The numbers are calculated by relevant electoral boundaries.