

PopUp Business School Aotearoa

In June 2018, 20 workshops were held for whānau and individuals wanting to start businesses in Tairāwhiti to strengthen their business and finance capabilities. Te Puni Kōkiri supported the delivery of the ten day business course that supported Tairāwhiti whānau and individuals to achieve their aspirations, by developing their skills in business development and financial management. The workshops covered setting up a business, building a website, identifying and finding customers, developing business confidence and motivation, negotiation skills, and finding the quickest path to set-up. The PopUp School is continuing to support the businesses to take next steps towards sustainable business growth, through a post-course support network and an online portal with access to business and sales development tools and mentor support.

Ka Eke Poutama programme

The Ka Eke Poutama programme is training skilled rangatahi leaders in governance by building rangatahi governance capability and leadership. Since 2016 Te Puni Kōkiri has invested \$0.26 million in the programme. Te Whare Hukahuka programme recognises and responds to the need of iwi for skilled, trained and confident rangatahi leaders. Rangatahi attend wānanga that increase their skills and knowledge around leadership, stewardship, entrepreneurship, and the fundamentals of governance. The programme supports rangatahi to pursue pathways in governance leadership. Graduates are supported to apply their learnings in real governance, advisory and business situations, by participating as trustees on governance and advisory boards.

Tū Kaha values programme

The Tu Kaha mobile classroom visits decile one schools across the country to build skills for health and wellbeing. The classroom programme focuses on developing a range of skills taiohi need for holistic health, such as strength recognition, strategies for decision-making, self-belief, a sense of purpose and pride in cultural identity. All of these skills help to build resilience, which is an essential element of wellbeing.

New Zealand Manuka Group cadetship programme

The New Zealand Manuka Group trains cadets to grow and harvest manuka oil. Each cadet is a trustee of Māori land being used and receives mentoring support while studying towards an apiculture or horticulture NZQA qualification. This programme builds the capability of young Māori for employment in a primary industry and grows the capacity of the whānau/hapū/iwi to manage their land strategically.

Waingākau Village co-housing development

Te Taiwhenua o Heretaunga Trust is helping to grow the capacity of whānau to own their own homes by increasing the supply of affordable housing in Heretaunga. The Waingākau Village will include 76 co-housing and 44 standard houses, costing between \$140,000 and \$375,000, in a mixed model of rental and ownership. The project will trial a shared equity investment model to enable people to purchase homes.

Learnings gained through this innovative trial will provide valuable information to other rōpū looking at ways to support their whānau into home ownership. This initiative may also strengthen the capacity of future rōpū to make strategic decisions on their home ownership initiatives.



Te Puni Kōkiri
MINISTRY OF MĀORI DEVELOPMENT

E kore au e ngaro, he kākano i ruia mai i Rangiātea

I will never be lost, for I am a seed sown in Rangiātea

Te Puni Kōkiri seeks to expand opportunities for whānau, hapū and iwi for social and economic prosperity. We fund a range of initiatives designed to strengthen capability and capacity development to assist whānau to gain the skills, knowledge and confidence to achieve their aspirations and build strong, resilient communities. This in turn strengthens the ability of whānau to engage meaningfully with Government agencies and local Government.

We reference the whakatauki above as kākano refers to the seed, that encapsulates the opportunities and inherent potential for growth and transformation. Ruia means to plant in conditions that enable seeds to evolve and flourish. Rangiātea refers to the process of development and the intergenerational connection to people that enables all whānau to thrive. From the ground up Te Puni Kōkiri is 'sowing the seeds of development' in ways to empower communities to lead their own solutions.

The different ways Te Puni Kōkiri supports capability and capacity development is encapsulated in this report providing an overview of how our funding was spread during 2017-2018, and the types of recipients involved. It is important to note the relationship between capability and capacity building initiatives is dynamic and overlapping.

Case studies are also included in this report. These provide more detail on how Te Puni Kōkiri funding is contributing to social enterprise-based capability and capacity development to support whānau to achieve their aspirations.

Sowing the Seeds of Development

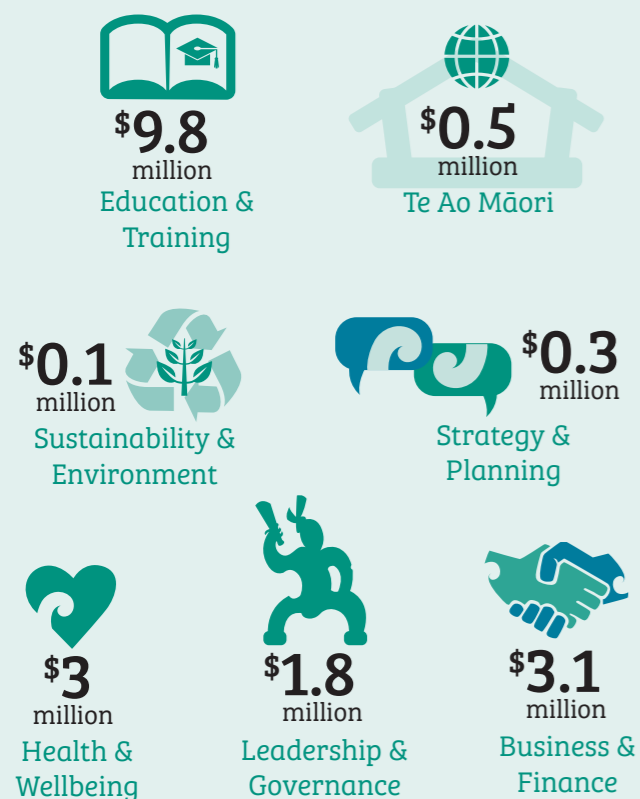
Breakdown of Te Puni Kōkiri capability and capacity funding (2017-2018)

Whānau Taurikura – Thriving Whānau

The following case studies are examples of how Te Puni Kōkiri is investing in building the capability and capacity of iwi, hapū, whānau and Māori organisations to achieve their aspirations and improve engagement with the Crown.

The seven capability categories

The skills to develop

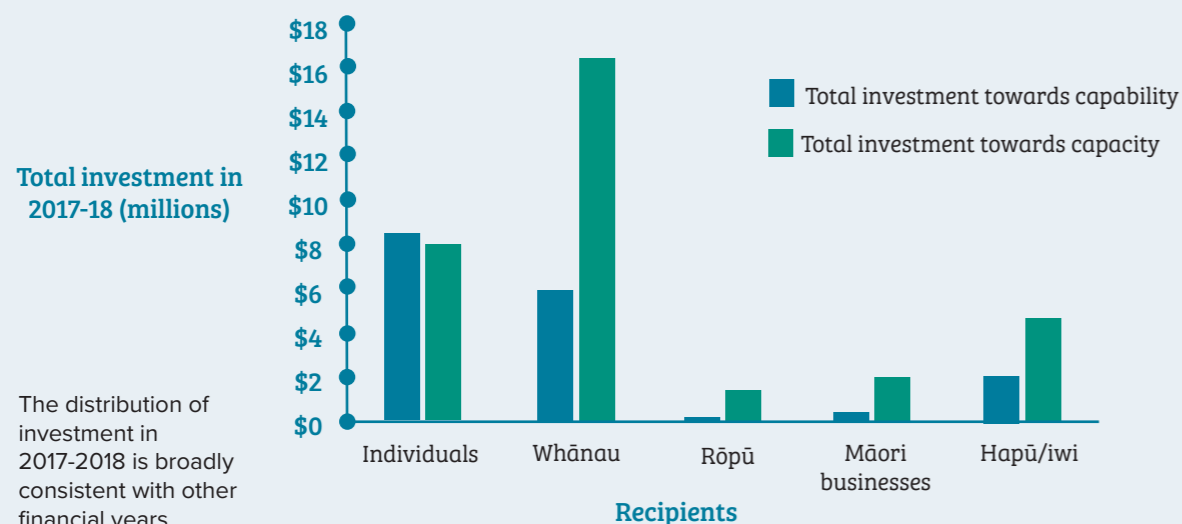


The six capacity categories

The resources to develop



An enabling environment – thriving whānau in engaged communities



eSports and Game Development Academy

The Digital Natives Academy Charitable Trust is building the capability of tamariki, rangatahi and whānau in digital technologies. Te Puni Kōkiri invested \$0.3 million to support the delivery of the eSports and Game Dev Academy, the first of its kind in the Bay of Plenty. The Academy aims to ignite a spark for rangatahi, showing them pathways into the digital technology industry and enabling them to develop computer programming and coding skills. The Academy also supports emerging digital technology businesses in Rotorua to collaborate.

Whareponga papakāinga

In December 2017, a Te Tairāwhiti whānau celebrated the opening of their papakāinga. Whareponga is a four-home papakāinga with infrastructure available to support a further two homes. Te Puni Kōkiri investment through the Māori Housing Network helped to make this possible by building whānau capacity to achieve their aspirations of developing a papakāinga. Self-sufficiency and interdependent living informed the development; the homes are off-grid for power, water supply and wastewater systems. The whānau also intend to re-establish orchards, a communal māra kai and livestock. Freed from power and water bills, and with home-grown kai, this papakāinga is likely to strengthen the future financial capacities of the whānau.

Ngā Pae Hiriri governance capability development programme

Since 2016, Te Puni Kōkiri has provided funding for the Institute of Directors (IoD) Ngā Pae Hiriri governance capability development programme. Ngā Pae Hiriri is building the capability of iwi to negotiate settlements that represent their needs and aspirations, facilitating relationships between Crown and Māori.

IoD delivers kanohi ki te kanohi workshops to grow the governance capability of entities responsible for negotiating and safeguarding treaty settlement assets on behalf of iwi.

Three-day Ngā Pae Hiriri workshops build iwi capabilities in governance skills, strategic planning, and financial literacy. Participants are also sponsored by Te Puni Kōkiri to become IoD members, joining more than 8400 others in their governance network.

The substantial, ongoing investment by Te Puni Kōkiri has supported IoD to continue to deliver and refine their Ngā Pae Hiriri workshops. They have introduced an 'Alumni' knowledge community where boards can share best practice learnings, and follow-up kanohi te kanohi sessions where iwi boards can reflect on their growth and identify areas for improvement.