



Te Puni Kōkiri  
REALISING MĀORI POTENTIAL

## Pūrongo Ā-tau

Mo te tau i mutu i te 30 o ngā rā o Pipiri 2006





I whakatakotohia ki te Whare Pāremata i raro i te  
Ture Moni Tūmatanui 1989

Whiringa-ā-nuku 2006



*Pūrongo Ā-tau a*



**Te Puni Kōkiri**  
REALISING MĀORI POTENTIAL

*mō te tau i mutu i te  
30 o Pipiri 2006*



### MINITA MŌ NGĀ TAKE MĀORI

Tēnei te honore kei ahau ki te tuku i te pūrongo ā-tau a Te Puni Kōkiri  
mō te tau i mutu i te 30 o Pipiri, 2006, ki a koe.

A handwritten signature in cursive script, appearing to read 'Leith Comer'.

Leith Comer  
Tumuaki Whakahaere

## PĀRONGO WHAKAHONO

### Head Office

Te Puni Kōkiri, Te Puni Kōkiri House  
143 Lambton Quay, PO Box 3943,  
Wellington, New Zealand

PHN *Waea* + 64 4 819 6000  
FAX *Waea Whakaahua* + 64 4 819 6299  
WEB *Paetukutuku* [www.tpk.govt.nz](http://www.tpk.govt.nz)

### Regional Offices

#### *Te Taitokerau*

WHANGĀREI ..... PHN *Waea* 09 430 3731  
KAITAIA ..... PHN *Waea* 09 408 2391

#### *Tāmaki Makaurau*

AUCKLAND ..... PHN *Waea* 09 571 2940

#### *Waikato*

HAMILTON ..... PHN *Waea* 07 834 7100

#### *Te Moana ā Toi*

WHAKATANE ..... PHN *Waea* 07 307 1057  
TAURANGA ..... PHN *Waea* 07 577 6254

#### *Te Arawa*

ROTORUA ..... PHN *Waea* 07 349 7810

#### *Te Tairāwhiti*

GISBORNE ..... PHN *Waea* 06 868 0208  
WAIROA ..... PHN *Waea* 06 838 7904

#### *Takitimu*

HASTINGS ..... PHN *Waea* 06 878 0757  
FEATHERSTON ..... PHN *Waea* 06 308 6240

#### *Te Tai Hauāuru*

WHANGANUI ..... PHN *Waea* 06 348 1400  
TARANAKI ..... PHN *Waea* 06 759 5450  
TAUMARUNUI ..... PHN *Waea* 07 895 7356  
PALMERSTON  
NORTH ..... PHN *Waea* 06 354 1706

#### *Te Whanganui ā Tara*

LOWER HUTT ..... PHN *Waea* 04 570 3180  
BLENHEIM ..... PHN *Waea* 03 579 4167

#### *Te Waipounamu*

CHRISTCHURCH ..... PHN *Waea* 0800 8758 3924  
DUNEDIN ..... PHN *Waea* 0800 8758 3924  
INVERCARGILL ..... PHN *Waea* 0800 8758 3924

### Pae Ipurangi

<http://www.tpk.govt.nz>

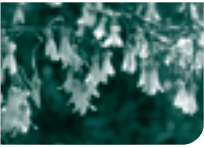
### Kaitātari Kaute

Te Tari Arotake o te Motu  
Te Whanganui-ā-Tara  
mō te Kaiwhakahaere Kaitātari Kaute

### Peeke

Westpac

## RĀRANGI TAKE



- 4 Rārangi Whakapā
- 6 Mai i te Tumuaki Whakahaere
- 8 Pārongo Whakahaere
- 10 Pānui Rangatōpū
- 13 Whāinga Rautaki Ā-Roto
- 15 Mahinga Take Nui Ā-Roto
- 17 Ngā Ture me ngā Mana Whakahaere a te Minita
- 24 Kaupapa Here me te Aroturuki – Hapori me ngā Tikanga
- 29 Kaupapa Here me te Aroturuki – Ōhanga me ngā Hinonga
- 33 Kaupapa Here – Honohononga Karauna – Māori
- 35 Honohononga me ngā Pārongo





# MAI I TE TUMUAKI WHAKAHAERE

6

## MAI I TE TUMUAKI WHAKAHAERE

I roto i te tau 2006, ka taea e mātou te titiro whakamuri, te āta whakaaro whakaata mō a mātou mahinga, me ngā hua nui tonu kua hangaia e te Māori.

Kua heke te iti o te kore mahi Māori ki te itinga rawa atu mō ngā wā katoa, he maha ake ngā Māori e whaiwāhi ana, e whiwhi tonu ana ki ngā taumata mātauranga katoa, kei te kite mātou i a rātou e mahi ana i ngā wāhi katoa o ngā kaupapa ōhanga, kei te tipu ake tā rātou papa rawa, me tā rātou takoha nui tonu ki ngā kaupapa ōhanga katoa o Aotearoa, me te ora rawa atu hoki o te reo Māori.

Mō ngā tau te kau mā rima ki muri, i te āwhina a Te Puni Kōkiri ki te hanga i te raukaha i roto i ngā hapori Māori.

Tūturu, kua taea e mātou te:

- Hanga i te raukaha whakahaere Māori;
- Tuku kaupapa mahinga i hāngai atu ki te whakaiti ritengakore;
- Whakahāngai pūtea ki ngā take tuatahi Māori i tohua;
- Whakawhiwhi mahinga kaupapa here honhono e pā ana ki ngā kōkiri whānau motuhake: ngā mahinga, ngā rangahau, me ngā whakanaonga ngātahi;

- Whakawhiwhi pārongo, tohutohu, me ngā whakaritenga ki te tautoko whānau, hapū, iwi, me te Māori;
- Mahi tahi ki te Māori ki ngā taumata katoa; me te
- Whakanui angitu ki runga tākaro, ngā mahi toi, ngā tikanga, me ngā hinonga.

Ināianei, kua tae ki te wā ki te whakahāngai i taua raukaha hei painga rawa atu.

Ko ngā mahi kaha katoa a Te Puni Kōkiri ka whakapā atu ki te whakatinana i te pūmanawa nohopuku a te Māori, kia āhei rātou ki te noho pai i roto i te angitu hei Māori. Kua whakapakaritia tā mātou tūranga, kaitohutohu kaiārahi kaupapa here, mō te kāwanatanga mō ngā honohononga Karauna me te Māori; mā roto i tā mātou kupenga tari ā-rohe tekau, kei te mahi tahi mātou ki ētahi atu hapori – kua pakari ake ngā hononga kei ngā rohe kāinga e whāngai mai ana ki te herenga kaupapa here; kua hangaia e mātou he kohinga kaha ake ki ngā pokapū kei roto i ngā kaupapa mahi a ngā Take Māori pērā i Te Māngai Pāho, Te Taura Whiri, Te Ratonga Pouaka Whakaata Māori me te Rōpū Mahi Hui Taumata.

He maha ngā whakatutukitanga i ngā marama te kau mā rua ki muri, me te whakahua i ēnei ki roto i tēnei pūrongo, ēngari, kahore i te rangirua, ko te mea rangatira, ko ngā mahinga kaha ki te whakatōtika i te Ara Pūmanawa Nohopuku Māori – ngā tikanga mahi mā Te Puni Kōkiri hei whakatinana i tāna huanga rautaki ko Ngai Māori e angitu ana hei

Māori. Kua tīmata kē mātou ki te mahi tahi ki ngā pokapū rāngai Mātauranga, i te mea ko te mātauranga me te whanake pukenga ngā take tuatahi nui tonu, kei roto i te Ara Pūmanawa Nohopuku Māori. Me te whakaaro kia whaiwāhi ngā tari Whanake Hapori, Rapu Mahi, me ngā Ratonga Kāwanatanga, ki te whakatenatena mahinga ngātahi, mahinga waenga pokapū, kia hono atu ki te Ara Pūmanawa Nohopuku Māori.

Ko tētahi o ngā mahi ka whakapā atu, ko te whakatakoto rerekē i te pūtea (kia whakaata i te takoto tata o ngā kaupapa mahinga ki ngā huanga kaupapa here kei raro i te Ara Pūmanawa Nohopuku Māori) tēnei ka kitea a Te Puni Kōkiri e neke ana, mai i te tuku pūtea whakatika wā poto, atu ki ngā haumitanga kaupapa huanga wā roa. Mā tēnei huarahi whakahaumi arotahi kaha ake, e whakatere i ngā whanaketanga mātauranga, pukenga, kia āhei te Māori ki te uru atu ki ngā tūranga mahi taupua, i roto i ngā wāhi kei te pukengakore.

Mā te hanga kia rahi ake ngā painga o mua, ka whiwhi a Te Puni Kōkiri i tētahi huarahi wātea, mō ngā tau whakamua e rima, ki te tino whakatere i te Māori atu ki ngā wā kei mua. Ka whai mātou ki te;

- Mahi ngātahi, tata ake, ki ngā hapori Māori;
- Whakapakari i ngā rohe;
- Hanga haumi rautaki ki roto i te raukaha;
- Mahi tonu i ngā wāhi katoa ki te whakatinana huanga ka meihatia; me te

- Whakarei mahinga i waenga i ngā pokapū.

Kei te harikoa ahau mō te ahunga whakamua ki tēnei wā, me taku tūkaha mō ngā pūmanawā nohopuku kei mua, āmuri i tēnei tekau mā rua marama tino manawanui kua pahemo nei. Tēnei rā ka tuku, e mātou o te Kapa Kaiārahi Whakahaere, i a mātou mihi maioha mō ngā piriponotanga ngākaunui, a ngā kaiwhakahaere me ngā kaimahi a Te Puni Kōkiri, i roto i te tau kua taha ake nei.



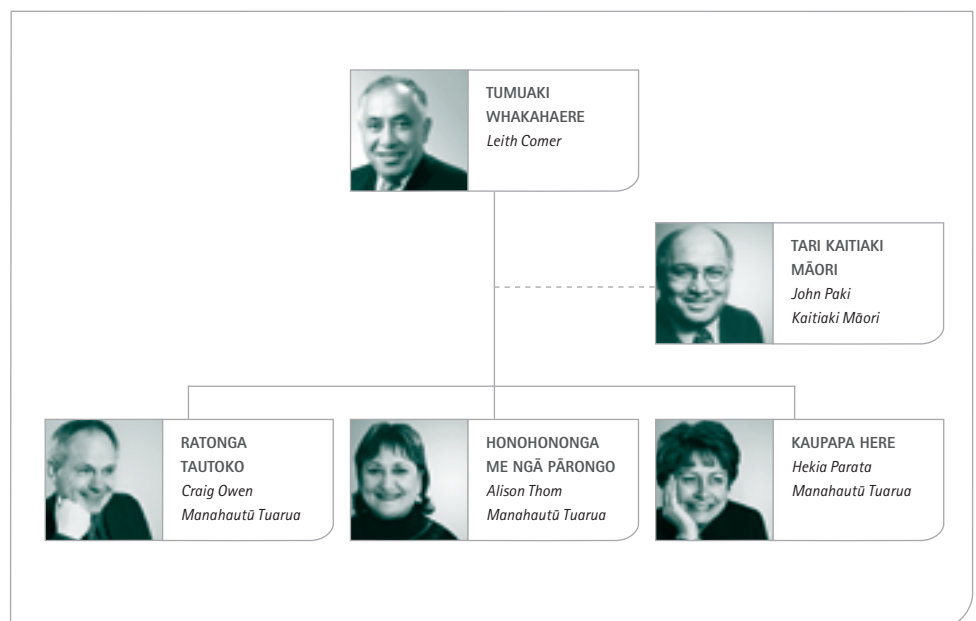
Leith Comer  
Tumuaki Whakahaere





# PĀRONGO WHAKAHAERE

8



## LEITH COMER, TUMUAKI WHAKAHAERE

Nā Leith Comer i ārahi te kapa Kaiārahi Whakahaere, i a rātou nei te mana whakahaere o ngā mahi a Te Puni Kōkiri, ia rā, ia rā. Rite tonu te hui a te kapa ki te whiriwhiri i ngā rautaki, ngā kaupapa here, ngā mahinga rangatōpū, me te aroturuki i ngā mahinga whānui katoa.

## HEKIA PARATA, MANAHAUTŪ TUARUA KAUPAPA HERE

*Te Wāhanga Kaupapa Here* - i a rātou te mana whakahaere, ki te ārahi i ngā mahinga tohutohu kaupapa here uho, ki te whakarite i ngā whakaurunga pārongo me ngā mātauranga, ngā tātaritanga whakahirahira, ngā tikanga aroturuki, arotake, ngā anga huanga tuturu, me ngā whakaritenga e whakapūmau ana i te arotau, te whakapā tōtika, te māia, te hāngai, me te taketake o ngā kaupapa here whakaputa. I whakawhirinaki atu te wāhanga kaupapa here ki tētahi huarahi whakakotahi mō tēnei mahinga uho, tuatahi, i roto tonu i te rōpū, tuarua, mai i ngā wāhanga tautoko, arā, te wāhanga Honohononga me ngā Pārongo, me te wāhanga Ratonga Tautoko.

## ALISON THOM, MANAHAUTŪ TUARUA HONOHONONGA ME NGĀ PĀRONGO

Ko ngā wāhi arotahi take nui e toru, a te wāhanga H&P, ko tā mātou: whakawhiwhinga hāngai i ngā kaupapa pūtea; whanaketanga honohononga rautaki, tōtika – te mahi ngātahi ki ngā kaiwhaiwāhi ki te whakatutuki i ngā whāinga ngātahi, me te huanga o *ngai Māori e angitu ana hei Māori*; me te whakawhiwhinga Ratonga Whanaketanga Pakihi. I te tau 2005/06 he nui tonu ngā mahinga e pā ana ki te hanga mahere ā-rohe me a rātou take tuatahi i kōwhiritia. I tua atu, i whanaketia tētahi pou tarāwaho rautaki haumi, ki te āwhina i a Te Puni Kōkiri i roto i ngā whakataunga e tūāpapa ana i ngā mahinga hei whakaoti. Mā tēnei ara anga whakamua e tautoko i a mātou ki te whakapakari ake i a mātou whakamahere ki te motu ki ngā rohe rānei, ā, ka tika hoki te takoto o ngā mahinga, me te takoha pai rawa atu ki ngā huanga, ngā rautaki, me ngā take tuatahi a te kāwanatanga.

## CRAIG OWEN, MANAHAUTŪ TUARUA RATONGA TAUTOKO

Ko ngā wāhi take nui i arotahi atu te Wāhanga Ratonga Tautoko ko te whakamahinga i ngā Rautaki a Te Puni Kōkiri, arā te Raukaha Kaimahi me te Whakahaere Mātauranga.

Ngā mea miramira i te tau 2005/06 ko: te whakatutukitanga i ngā kirimini Mahi Ohu mō ngā kaimahi a te Tari a Te Kaitiaki Māori, ā-muri ake mō ngā kaimahi a Te Puni Kōkiri ki te Rōpū Ratonga Tūmatanui; te orokohanga me te whakamahinga i tētahi kaupapa mahi arotake ā-roto, tētahi arotake pārongo, me te whakamahinga maherehere mō te Whakahaere Mātauranga.

## JOHN PAKI, KAITIAKI MĀORI

Kua tū kē te tūranga Kaitiaki Maori mai i te tau 1921, ināianei kei te whakahaeretia i raro i te Ture Kaitiaki Māori, 1953, ki te:

- ārai me te whakakaha ake i ngā pānga a ngā kiritaki Māori me a rātou rawa;
- tiaki i ngā whakapātanga koaro o te whakakongakonga me te whakamaha rawa atu i ngā pānga whenua Māori;
- whakawhiwhi whakahaere pono, tika, tūpato, mō ngā rawa kiritaki, i raro i ngā kaupapa me ngā herenga pai o te kaitiakitanga me te pokapūtanga.



# PĀNUI RANGATŌPŪ



He tari pokapū kōmitimiti a Te Puni Kōkiri, e whakahaere ana i ngā tukunga moni ki ngā kaupapa mahi mō te whanaketanga hapori; e aroturuki ana i te hāngaitanga a ngā pokapū kāwanatanga; me ngā tohutohu mō ngā kaupapa here kāwanatanga e pā ana ki te oranga o te Māori.

Kua tuhia ngā huanga i whai a Te Puni Kōkiri ki te whakatutuki, ki roto i te Pānui Whāinga – 1 Hōngongoi 2005, kua whakawhānuitia hoki ēnei i roto i ngā Wāhi Whakaputa me ngā whakaputa whakahoā ka tukuna, i roto i te Mahere Whakaputa 2005/06.

I runga i te ōritenga ki ngā mahinga tino pai ināianei, kua hangaia e Te Kapa Whakahaere Ārahitanga ngā rangatōpū take nui e whai ake nei, me ngā whakamutunga mārama rawa atu kua whakatauria.

## HUANGA RAUTAKI: NGAI MĀORI E ANGITU ANA HEI MĀORI

I whakahāngaitia ngā mahinga kaha a Te Puni Kōkiri ki tōna Huanga Rautaki i konei i whakamōhiotia te whakahirahiratanga a te Māori hei tangata ngātahi, ki roto rōpū, ki roto ohu tāngata, e whakatutuki ana i tētahi taumata angitu taupua. I whakaatutia e te Māori ēnei taumata angitu, i roto i:

- ngā whaiwāhitanga me ngā painga i whiwhia mai i ngā huarahi wātea a te mātauranga me ngā ōhanga, āpiti atu ki ngā take mahi i āwhina i te ekenga ki tā rātou taumata
- ngā rōpū pūtahi i te whakahaere pakari,

hāngai ana

- ngā tāngata e kakapa ana i roto i ngā tikanga pakari
- te kakapatanga i roto i ngā hinonga
- te hanga me te whakaū whānau hauora
- te tū hei tauira wairua auaha mō ngā rōpū pakihī, ngā rōpū whakahaere, ngā hapori, ngā whenua ake rānei
- te pupuri whakahoā painga ki ngā kaiwhaiwāhi o te kāinga, o te motu, o te ao, āpiti atu ki ngā rōpū umanga.

## TŪRANGA KUA TAUTUHIA: KO TE PUNI KŌKIRI TE KAITOHUTOHU MATUA MŌ NGĀ HONOHOONGA KĀWANATANGA - MĀORI

- e ārahi ana i ngā kaupapa here tūmatanui Māori
- e whakahaere ana i ngā Honohononga me ngā Pārongo

Hei pokapū kāwanatanga, e arotahi ana ki te Māori anake, he tūranga pakari tā Te Puni Kōkiri ki te whakawhiwhi ārahitanga, tautokohanga, ki āna kaiwhaiwāhi ki te hanga takoha hāngai rawa atu ki te Huanga Rautaki. I whakatutukia tēnei i runga i te ārahitanga me ngā tautokohanga i te kāwanatanga mā roto i ngā tohutohu kaupapa here kairangi, ngā mahi aroturuki hāngai, me te hanga, te whakaū honohononga pakari rawa atu.

E whakaāe ana a Te Puni Kōkiri, e kore e tutuki te Huanga Rautaki mehemea kahore te whaiwāhitanga me ngā mahinga kaha a ngā kaiwhaiwāhi take nui, āpiti atu ki ngā pokapū

rāngai kāwanatanga whānui ake, ngā whānau, hapū, iwi, ngā rōpū me ngā hapori Māori, ngā rōpū pakihī o te motu, o te ao, me ētahi rōpū ake.

Ko ngā mea takawaenga i tautoko i te raukaha a Te Puni Kōkiri ki te mahi hāngai i āna mahi, ko:

- āna kupenga mahi ki te Māori, me ētahi ake hoā mahi;
- te piripono a te rōpū me ngā kaimahi ki te whakatinana i te pūmanawa nohopuku Māori;
- te wāhanga nui a ngā kaimahi Māori kei ngā tūranga kaiārahi, kaupapa here, aroturuki, kei te mahi anō ki te taha o te Māori;
- te wāhanga nui a ngā kaimahi kei te mārama atu ki ngā hiahia Māori, ka taea

hoki te hanga honohononga tōrunga ki te Māori ngātahi me ngā rōpū; me

- te tirohanga a ngā tāngata tūmatanui ko Te Puni Kōkiri kei te whakawhiwhi i tētahi wāhi kotahi hei whakapātanga atu mō rātou katoa e whaipānga ana ki ngā take, ngā huarahi wātea, pārongo rānei, e pā ana ki te Māori.

### WHĀINGA: 'WHAKATINANA I TE PŪMANAWA NOHOPUKU MĀORI'

Hei whakatutuki i tēnei whāinga ka mahi tonu a Te Puni Kōkiri ki te whakatika i te Ara Pūmanawa Nohopuku Māori ki te whakatinana i te pūmanawa nohopuku Māori; mā konei ka oti te ōritenga i waenga i te whakatinana pūmanawa nohopuku me te whakatika i te takarepa. He āhua maha ngā take i whakaawe atu ki tēnei:



### KMO KEI TE PUNI KŌKIRI

*I te marama o Hui –Tanguru, 2006, i hainatia te Kirimini Mahi Ohu (KMO) tuatahi, mai i te tau 1962, i waenga i Te Puni Kōkiri me te Rōpū Ratonga Tūmatanui (RRT), ā-muri i te whakamanatanga a ngā mema RRT o te Tari Kaitiaki Māori i te Kirimini. Kei te mātakitia tēnei hei whakahoā tirohanga whakamua i waenga i ngā kaiwhakahaere me ngā kaimahi.*

Me nui ake te whakahāngai kē ki runga...	Me iti iho te whakahāngai kē ki runga ...
Pūmanawa nohopuku, pakaritanga, me ngā huarahi Māori, kōrahi maha	Whakatika takarepa, rerekētanga, mahinga hē, kōraha kotahi
Te whakahaumi ki te Māori hei hapori kōmitimiti, tikanga kōhure, tangata whenua.	Whakahāngai atu ki te Māori hei mātāwaka tokoiti, kuare, i roto i ngā tikanga hapori, ōhanga
Te whakahaumi ki ngā tāngata Māori	Arotahi nui tonu ki ngā whakautu pūtahi





## TŪRANGA MAHI KUITI

*I te wā o te raumati o te tau 2005/06, i whakahaeretia e Te Puni Kōkiri tāna kaupapa Tūranga Mahi Kuiti, ki te hanga ki runga i te angitu o ngā tūranga mahi kuiti o mua. I whiwhi huarahi ngā kaimahi ki te ako, ki te mātaki taketake i ngā whakahaerenga a tētahi rōpū rāngai kāwanatanga. I runga i te haere angitu o te kaupapa tūranga mahi, kei te mahi tonu ngā kaimahi e toru mō Te Puni Kōkiri, mō te wā poto, mō te wā kiki rānei.*

Nā ngā mātāpono e whai ake nei i ārahi te huarahi pūmanawā nohopuku Māori:

- **Pūmanawa Nohopuku Māori:** i rapu i ngā huarahi ka wātea mai mō ngai Māori ki te whakarerekē i a rātou āhuratanga noho, kia tau atu ki tētahi oranga kairangi pai ake. I whakamōhio e tēnei mātāpono he tāngata kōrahi maha, manako nui, te Māori, kei te tautokohia e tētahi pūnaha tikanga rerekē, me ngā wāriu rerekē.
- **Tikanga Rerekē:** i manaakitia te Māori hei tāngata tuatahi nō Aotearoa, ka tautoko, ka whakanui te tāonga tikanga e whakarangatira ana e te Māori a rātou hapori. Koia nei i whakaata i te tūranga a te Māori me a rātou tikanga tangata whenua ki roto i ngā hapori whānui ake.
- **Raukaha a te Māori:** i hanga i te raukaha a ngā tāngata Māori, i whakawhānui i tā rātou whakaaro, ngā momo kōwhiringa, me te mana ki te whakamahi. I whakamōhio e tēnei mātāpono te whai e te Māori ki te titiro ki a rātou tonu hei kaiwhakakōki ki te hanga rerekētanga.

## ARA PĀTAHI: TE PUNI KŌKIRI 'E AHU WHAKAMUA NGĀTAHI ANA'

Te māramatanga o ngā kupu Te Puni Kōkiri, ko tētahi rōpū, 'e ahu whakamua ngātahi ana', me āna wāhanga e rua – ngā mahinga tahi, ā-roto, ā-waho. Kia whakahaere hāngai tonu a Te Puni Kōkiri hei rōpū, i whai kaha ngā wāhanga ki te mahi i raro i ngā whakarite whāinga, piripono, me te arotahi pātahi.

He mea whakahirahira anō ngā mahinga tahi ā-waho, mō te hāngaitanga a ngā mahi a Te Puni Kōkiri. I tautokohia tēnei e te kaha tonu a ngā kaimahi a Te Puni Kōkiri ki te whakapakari i ngā honohononga atu ki; te Māori, te rāngai kāwanatanga, ngā rōpū pakihi, me ngā hapori.

# WHĀINGA RAUTAKI Ā-ROTO

I whāia e Te Puni Kōkiri ngā Whāinga Rautaki Ā-Roto e toru, kia kaha ake ia ki te whakatutuki i āna mahi, ā, mā konei ka whakareia ai tōna takoha atu ki a Ngai Māori e angitu ana hei Māori.

Ko ēnei Whāinga ko:

- **te hanga me te tautoko i ngā Kaupapa Here Tūmatanui Māori**

I runga i ngā mahi nui ki roto o Te Puni Kōkiri, ka kitea te whanaketanga o te Ara Pūmanawa Nohopuku Māori hei whakamanawa i te hiahia a te Miniita mō ngā Take Māori ki te whakatika, ka riro māna e ārahi i te huarahi hou ki ngā kaupapa here Take Māori e tūāpapa ana ki te whakatinana i te pūmanawa nohopuku Māori.

Ko te Ara Pūmanawa Nohopuku Māori ka āwhina i a mātou ki te titiro ōrite ake atu ki a ngai Māori i waenga i te 'whakatika takarepa' me te 'whakatinana pūmanawa nohopuku'. He huarahi whakamau manako, whakamau tikanga ki te whanaketanga Māori, e whai ana ki te tautoko i te raukaha, te kakama, me te hiahia a te Māori ki te hanga kōwhiringa mō rātou ake, ka whakawhiwhi huarahi wātea hei tautoko i te Māori ki te mahi i raro i ngā āhuatanga e tautoko ana i te tuakiri tikanga, me te takoha atu ki te kairangi oranga tino pai rawa atu.

Hei te otinga katoa o ngā mahinga a te Ara Pūmanawa Nohopuku Māori, hei konei ka tuatokohia a Te Puni Kōkiri, me ētahi ake pokapū rāngai kāwanatanga ki te:

- Tautuhi i ngā huanga ka takoha atu ki te whakatinanatanga o te pūmanawa nohopuku Māori.
- Whakatau me te whakarite kaupapa here me ngā whakataunga haumi ka takoha atu ki ēnei huanga.
- Whakatakoto i ngā tohungatanga Māori ki runga i ēnei huanga, ā hei te wā, ki te whakatakoto i ngā āhuatanga o te angitu, me ngā hua kitenga ka takoha atu ki ēnei huanga.
- Whakarite i ngā wāhi mahinga tuatahi, ka aromatawai, ka hanga pūrongo mō te hāngaitanga o ēnei wāhi e takoha ana ki te whakatinana pūmanawa nohopuku me ngā painga ka meihatia.
- Hanga pūrongo mō te hāngaitanga o ngā utu me te hanga tika i waenga i ēnei mahinga.
- Arotake i ngā mahinga ā-roto, i waenga hoki i ngā tari, e pā ana ki te takoha atu ki te pūmanawa nohopuku Māori.
- Taunaki i ngā take tuatahi kei mua, ngā mahinga pai, me ngā kaimahi pai.
- Whakawhiwhi i tētahi tirohanga whānui, ahopou, pūmau, whakariterite, o ngai Māori ki Aotearoa.

- **te hanga me te tautoko honohononga**

I hangaia e Te Puni Kōkiri tētahi Rautaki Whakahaere Honohononga hei whakakaha





## WHANAKETANGA WHAKAHAERE ME TE KAIĀRAHITANGA

*Kua tuku rawa nui tonu mātou ki ngā kaimahi ki te whakapai whakahaere me te kaiārahitanga, me ngā pukenga hangarau, ngaio, kei roto i te rāngai tūmatanui. Kua tīmatatia e mātou tētahi kaupapa whanake kaiwhakahaere mātāmua i roto i te wāhanga kaupapa here, a tōnā wā ka whakamahia tēnei ki ngā wāhanga katoa a Te Puni Kōkiri. Kua whakaāe a mātou kaimahi ā-rohe ki te whakahaere i tētahi kaupapa whanake wairua auaha ka mahia ki ngā hui kohinga kaimahi.*

*Kua hangaia anō e mātou tētahi pou tarāwaho whanake, akoranga, pae-rorohiko, 'Whakatinana Pūmanawa Nohopuku', he wāhi pekanga kotahi o ngā rawa, ngā pārongo, me ngā whakaaro hei āwhina i ngā kaiwhakahaere me a rātou kaimahi ki te tautuhi ngā hiahia whanaketanga, akoranga, ngā huarahi wātea me ngā kaupapa whakatika.*

ake i te huarahi ki te hanga me te tautoko honohononga ki a ngai Māori. Hei kīnaki ki ngā mahi ārahi ngātahi a Te Puni Kōkiri me te Tari Ture ki te whakaoti i te Tuhinga Honohononga Karauna/Māori (THKM) hei mahinga mā te rāngai kāwanatanga, ki te arataki i ngā honohononga i waenga i te Māori me te kāwanatanga hei māngai mō te Karauna. He nui ngā mahinga i arotahi atu ki te whanake mahinga me te whakatikatika i ngā honohononga kei roto i ngā Rārangi Arataki THKM i whakamanatia e te Komiti Matua a te Pāremata i te marama o Haratua 2006.

### • te hanga me te tautoko raukaha

Kua tautoko a Te Puni Kōkiri ki te take whakahirahira nei, te hanga me te tautoko i te raukaha a ngā kaimahi, me te whakapūmau ka tautokohia ngā pūnaha ā-roto me ngā whakaritenga i a rātou. Me te haere tonu o ngā mahi ki te whakatikatika me te whanake i te whāinga rautaki whakatū i a Te Puni Kōkiri hei tari mahi pai mō ngā paetahi pūmanawa, ngā ahurangi tohunga, me ngā kaimahi kāwanatanga.

Kua kitea e ngā mahinga o ngā wāhi take nui i te tau 2005/06, ngā āhuetanga pai ake pērā i:

- te whakamahinga i tētahi rautaki taiutu me ngā whakaritenga i roto; te whānuitanga utu mō ngā kaimahi kāwanatanga kei te wāhanga hauwhā o runga; he whakaritenga ngāwari mō te rapu kaimahi; te whakamahinga i te kaupapa arotake me te whakarahi tūranga mahi; me te iti haere o ngā hurihanga kaimahi;
- kua tuhia e ia Wāhanga tōna ake mahere whakangungu, whanaketanga;
- I tutuki pai te whakawhitiwhiti kōrero mō

te kirimini mahinga kaimahi i waenga i te Rōpū Kaimahi Kāwanatanga me ngā kaimahi a te Tari Kaitiaki Māori;

- Ētahi kaupapa kakama e hāngai ana ki ngā whanaketanga mahi me ngā huarahi kaiārahi mō ngā kaimahi.

# MAHINGA TAKE NUI Ā-ROTO

I tautuhia ngā mahinga take nui ā-roto e whā, hei tautoko i ia o ngā Whāinga Rautaki e toru: Ko ēnei ko:

## Whakamātautau me te whakatika i te Ara Pūmanawa Nohopuku Māori

Ko Te Puni Kōkiri i ārahi i te whanaketanga o tētahi ara kaupapa here whānui ki te Kaupapa Here Tūmatanui Māori, i roto i āna mahinga ki runga i te Ara Pūmanawa Nohopuku Māori. Kei te whakawhirinaki a Ngai Māori e angitu ana hei Māori ki te whakatinana i te pūmanawa nohopuku Māori i roto i ngā āhuatanga tikanga e tino tika e rite ana. Hei whakapūmau i tēnei, i raro i ngā āhua rite, āhua whakarite, āhua puata, kua whakamahia he ara kaupapa here whānui me ngā korahi e whai ake nei:

- Te whakatutuki i ngā Huanga Waenganui o te Māori mā te whakamariu i a rātou tohungatanga o te Orangatanga, te Mātauranga, te Kaiārahitanga, me ngā Rawa, mō te angitu tauwhiro
- E whakaāe ana kei roto i te Ara ngā kaupapa e whai ake nei:
  - He tangata korahi maha, kanorau te Māori
  - Kei te kōmitimiti te Māori, ēngari te hāpori kei te tikanga rerekē
  - He tāngata kaitapere pakari a ngai Māori i roto i a rātou ake oranga

## Whakamahi i te Rautaki Whakahaere Mātauranga

I tautoko a Te Puni Kōkiri i te whakahiratanga o te Whakahaere Mātauranga kairangi ki āna mahinga. Mā te Whakahaere Mātauranga

kairangi ka āhei ngā kaimahi ki te whakanui ake i ngā mātauranga e tango ana, e hanga ana, e whaiwāhi ana – te mea nui, ki ngā kaiwhaiwāhi. I tīmata ngā mahi whakapakari i ngā rangahau, ngā tātaritanga, me ngā pārongo i waenga i te tau 2004/05. Me tētahi ake āhuatanga, i whakatūria ngā Kaitohutohu Pārongo ki roto i ngā rohe.

I hanga a Te Puni Kōkiri ki runga i tēnei anga whanaketanga i tā rātou whakamahinga i ētahi whakaritenga me ngā pūnaha kohikohi, whakahōrapa pārongo. I roto i tētahi arotake mō te Whakahaere Pārongo kaupapa here, whakaritenga me ngā mahinga i roto i Te Puni Kōkiri, ka tirohia ngā painga me ngā wero whakahaere ka puta, mai i ngā tūranga Kaitohutohu Pārongo, ki a mātou whakaritenga me ngā takotoranga pārongo.

Ko ngā mahi mō tēnei kaupapa, ko:

- te hanga ki runga i tētahi kaute taonga o a mātou rawa pārongo, mā te whakahaere arotake pārongo kia kitea e pēwhea ngā kaimahi e whakahaere ana i ēnei pārongo;
- te whakapai ake i tā mātou Kaupapa Here Whakahaere Pārongo;
- te whakahou i ā mātou Rautaki Whakahaere Mātauranga; me
- te arotake, te whakatika, me te whakapai ake i a mātou pūnaha Hangarau Pārongo ki te whakapūmau kei te whakapā tonu, kahore i te pakaru, i te tūkinotia, kei te iti tonu ngā pakarutanga.







## WIKI ORANGA

*I te marama o Whiringa-ā-rangi, 2005, i whakahaeretia he kaupapa whakamātau wiki Oranga mō Te Puni Kōkiri. I puta mai te kaupapa nā te kitenga hiahia ki te rapu āhuatanga hei āwhina i ngā kaimahi whakatinana i tā rātou pūmanawa nohopuku, te mea nui ki te whakawhiwhi tautokohanga mō ngā kaimahi kia whakatutuki oranga tinana, oranga hinengaro tino arotau.*

16

Anō i te tau 2005/06, hei wāhanga o te mahinga pārongo a Te Puni Kōkiri e haere tonu, i whakanaotia ngā whārangi take mō, Wāhine Māori i roto i ngā Pakihi, Ngai Māori i roto i te Hutupaoro, Ngai Māori i roto i ngā Puoro o te Wā, Te Papa Hua Māori, Te Māori i roto i te Hākinakina me ngā Wā Whakatā, me Ngai Māori kei Ahitereiria. Kua tukuna ēnei ki te minenga me te takoto anō ki runga i te ipurangi rorohiko: [www.tpk.govt.nz](http://www.tpk.govt.nz).

### Whakamahi te Rautaki Whakahaere Honohononga

I tautoko a Te Puni Kōkiri i te whakahiratanga o ngā honohononga kairangi pai me te hanga i ngā pārongo tōtika hei whakamahi i ngā Huanga Rautaki, Waenganui. Nā te Rautaki Whakahaere Honohononga pai ake, i āwhina te whakapakaritanga o ngā honohononga ki runga i te tari, ngā honohononga ki te Māori, me ngā honohononga ki ngā kaiwhaiwāhi take nui, i a rātou anō te mahi ki te whakapai ake ngā huanga mō te Māori.

I whakapakaritia anō te kupenga mahi o ngā tari ā-rohe, me ā rātou mahi hanga honohononga, hanga pārongo, mō ngā mahinga kaupapa here. Te mea nui, i whaiwāhi atu ngā mahinga a te Rautaki Whakahaere Honohononga, ki te:

- Whakaoho, te whanake, me te whakatinana i te Pūmanawa Nohopuku Māori mā roto i a mātou honohononga;
- Hanga honohononga kaha ake ki ngā whānau, hapū, iwi, rōpū Māori me ngā haporī, kia kaha ai rātou ki te hanga huarahi taupua mō rātou ake;
- Whakapakari i ngā whakahoia i waenga i te Māori me ngā kaiwhaiwāhi take nui ake;
- Whakawhāiti pārongo mai i ngā rohe hei whakamārama i te whanaketanga Māori,

me te whakahaumi atu ki ngā tāngata Māori;

- Whakamahi pārongo kua kohia hei whakamārama whanaketanga kaupapa here; me te
- Whakarite whaiwāhitanga tere mō te mahinga tahi a te kāwanatanga ki te Māori me te whakanui ake i tā mātou hononga atu ki a rātou.

### Whakamahi i te Rautaki Raukaha Tāngata

E hāngai ana te *Rautaki Raukaha Tāngata ki 2010*, ki te kukume, te whanake, me te pupuri i tētahi putunga taupua o ngā tāngata pukenga kaha hei takoha hāngai atu ki a *ngai Māori e angitu ana hei Māori*. I kitea, i roto i tētahi arotake o ngā raukaha tāngata, ko te kimi me te pupuri kaimahi tohungatanga tonu tētahi arotahi take nui mō Te Puni Kōkiri.

Ko ngā mahinga i te tau 2005/06, ko te:

- arotake haere tonu me te whakatikatika i te Pou Tarāwaho Rawa Tāngata me te whanake i ngā rautaki me ngā kaupapa kakama e pā tata ana;
- hanga pou tarāwaho whanaketanga akoranga, mahi, mō ngā kaiārahi pūmanawa nohopuku me ētahi ake kaimahi kia pūmau te āhei o ngā kaimahi ki te whakatutuki me te whakamau mahinga pai i roto i a rātou tūranga mahi ināianei, me te whakapakari i a rātou mō ngā mahi kei mua, āpiti atu ki ngā mahi kaiārahi kei roto i Te Puni Kōkiri me ngā tari kāwanatanga whānui ake; me te
- hanga whakaritenga kimihanga, kōwhiritanga, whanaketanga, ka kite, ka kōwhiri, ka whanake i ngā whakaurunga hou, ngā kaimahi e hoki mai ana rānei, ki ngā pūmanawa nohopuku hei whakatutuki i ngā mahi a Te Puni Kōkiri.

# NGĀ TURE ME NGĀ MANA WHAKAHAERE A TE MINITA

I tua atu ki te mana whakahaere i ngā kaupapa here whānui, i te Minita mō ngā Take Maori anō te mana whakahaere motuhake mō ngā whakapātanga a te kāwanatanga ki runga i ngā tāngata Māori, mō ngā whakapātanga o ngā kaupapa here ki runga i te minenga tauīwi, me te whakahaere pai i te honohononga i waenga i te Karauna me ngā whakahoā Tiriti, me ngā iwi, hapū, kirirau Māori o Aotearoa.

I raro i ētahi momo ture whānui, i tukuna ki te Minita he herenga ture, me te mana ture, hei whakatutuki i ēnei whakahaere. E herea ana te Minita ki te:

- Whaiwāhi hei mema mō tētahi poari, rōpū ture rānei;
- Whakakī tūranga ki runga poari, rōpū ture rānei;
- Tuku tūtohutanga e pā ana ki te whakakī tūranga;
- Whakahaere i ētahi ake mana, mahinga rānei.

## TŪRANGA MEMA O NGĀ POARI ME NGĀ KOMITI

Ko te Minita te Tiamana o te Poari Pūtea Whāinga Māori, i whakaturia i raro i te Ture Poari Pūtea Whāinga Māori, 1934, ki te whakahaere i te Pūtea Whāinga Māori. Ko ngā whāinga whānui a te Poari, ko:

- Te whakatairanga i te oranga hauora, mātauranga, hapori, me te ōhanga a te Māori;
- Te whakatenatena me te ako i ngā mahi toi Māori;
- Te rangahau me te whakaputa pukapuka

mō ngā mahi toi, te reo, ngā tikanga, ngā kawa, me te hītori o te Māori, me ngā iwi whanaunga o te Moananui-ā-Kiwa;

- Te tiakitanga o te reo Māori.

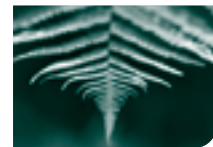
Ko te Minita anō te Tiamana o te Komiti Kaitiaki Hoia Māori, i whakatūria i raro i te Ture Kaitaki Hoia Māori, 1957, ki te whakahaere i te Kaute Pūtea Hoia hei painga mō ngā hoia pakeke Māori me a rātou pararau. Kei te Minita te mana whakahaere ki te whakatū mema ake mō te wā e rua tau.

I raro i te Ture Poari Kaitaiki A-motu o Waitangi, 1932, he mema Poari ia, no tana tūranga Minita anake, ā, he mema anō ia a te Wānanga Whanga o Hauraki, he komiti tēnei nā te Kaunihera Rohe o Tāmaki Makaurau.

## TŪRANGA E WHAKAMANA ANA E TE MINIITA

Tokomaha ngā tūranga minitatanga me whakamanatia i raro i ētahi ture. Kei te Minita mō ngā Take Māori te mana whakahaere ki te whakakī tūranga ki runga i:

- Ngā Poari Kaitiaki Māori;
- Ngā kaiwhakawā a te Kooti Whenua Māori;
- Te Poari Ratonga Ture;
- Ngā Komiti Ratonga Ture Ā-rohe;
- Te Komiti Tikanga Ture a te Kooti Whenua Māori;
- Te Komiti Whiriwhiri a te Kooti Whenua Māori;
- Te Kaitiaki a Wi Pere;
- Te Kaitiaki a Bledisloe;
- Te Kaitiaki Rāhui o Kaiapoi;
- Te Taura Whiri i te Reo Māori;





## HURIHANGA KAIMAHI KEI TE PUNI KŌKIRI

*Kei te whakahaere tika e Te Puni Kōkiri ngā āhuatanga hurihanga kaimahi mā te āta tiaki pai āna kaimahi; mā te whakawhiwhi utu whakataetae; te whakatairanga mahi mānawa; me te whakawhiwhi i tētahi tikanga rōpū e whakahaere kaiārahitanga hāngai. Hei tohu kei te angitu a Te Puni Kōkiri i roto i ēnei whāinga, kua heke nui tonu te maha hurihanga kaimahi mai i ngā tau ki muri.*

- Te Kaitiaki Hoia Māori;
- Ngā Wātene Māori;
- Te Poari Mātai Matawhenua o Aotearoa;-
- Te Kaitiaki o Poutama;
- Te Māngai Pāho (Te Reo Whakapuaki Irirangi);
- Te Ratonga Pouaka Whakaata Māori.

Me whiriwhiria anō ki te Minita ngā tūranga whakakī ki runga i ngā rōpū e whai ake nei:

- Toi Aotearoa;
- Te Mana Papa Atawhai o Aotearoa;
- Ngā Poari Papa Atawhai;
- Te Poari Mātauranga me te Pokapū Tautoko Whakangungu;
- Te Kaunihera Taonga Tuku Iho Māori;
- Te Kaitiaki Ā-motu a Kuini Irihapeti Tuarua;
- Ngā Kaiwhakawā Whakamahere ngā Kaiwhakawā Whakamahere Takirua rānei;
- Te Kaikōmihana Whakamahere, te Kaikōmihana Whakamahere Kaitiriwā rānei;
- Te Poari Kaitiaki a te Kaitiaki Wāhi Hītori o Aotearoa;
- Te Poari Ratonga Ture – kotahi te mema;
- Ngā Komiti Ratonga Ture – kotahi mema mō ia Komiti

### NGĀ TŪRANGA ME NGĀ MANA WHAKAHAERE TURE AKE

Kei te Minita mō ngā Take Māori ētahi mahinga whakahaere ā-ture i raro i ētahi tūmomo ture. Ko ngā mana whakahaere nui tonu i raro i ngā ture Take Māori, ko:

- Te Tuku whakamana ki te Kaitiaki Māori ki te tonono moni, ki te hoko, te rīhi, te tuku rānei i te whenua i raro i te Ture Kaitiaki Māori 1953;
- Te whakamōhio take ki te Kooti Whenua Māori kia patapataitia, me te hanga tonu ki te Kooti ki te tuku whenua ki te taha hei whenua rāhui Māori i raro i Te Ture

Whenua Māori 1993;

- Te whakatū Watene Māori i raro i te Ture Whanaketanga Hapori Māori 1962;
- Te whakahaere i ngā whakataunga moni tika, me ngā pooti a ngā Poari Kaitiaki Māori i raro i te Ture Poari Kaitiaki Māori, 1955, āpiti atu ki te whakatū me te pana i ngā mema poari;
- Te taunaki tāngata tika ki te Kāwana Tianara ki te whakatū hei Tiamana, hei mema rānei ki runga i te Rōpū Whakamana I te Tiriti o Waitangi, me te haere ki mua o te Rōpū mō ngā take e pā ana ki te whenua, te pānga rānei e whakawhitia ana, e tukuna ana rānei ki te Hinonga Kāwanatanga, e pā ana ki te whenua Ngahere Karauna i raro i te Ture Tiriti o Waitangi 1975.

### TURE E WHAKAHAERETIA ANA E TE PUNI KŌKIRI

I runga atu i te whakatutuki mahi i raro i ngā ture whanui e whakahaere nei a Te Puni Kōkiri me ētahi ake pokapū kāwanatanga i a rātou take, kei a Te Puni Kōkiri, me te Minita hoki, te mana whakahaere i ngā Ture Pāremata, e 29, e whai ake nei. Kei roto i te tūranga mana whakahaere nei kō; te aroturuki tautukunga, te arotake i ngā ture, me te whakatinana i ngā mahi whakatika ture.

- Te Ture Poari Kaitiaki Māori o Hauraki 1988;
- Te Ture o Waikaremoana Roto 1971;
- Te Ture Poari Kaitiaki Māori o Maniapoto 1988;
- Te Ture Whakatika Take Māori 1989;
- Te Ture Whanaketanga Hapori Māori 1962;
- Te Ture Hanga Whare Māori 1935;
- Te Ture Whakatika Whenua Māori me te Whakatika Kerēme Whenua Māori 1926;
- Te Ture Reo Māori 1987;
- Te Ture Whāinga Māori 1926 – 81;

- Te Ture Whāinga Māori 1991;
- Te Ture Whāinga Māori 1993;
- Te Ture Whāinga Māori (Wi Pere Kaitiaki) 1994;
- Te Ture Pūtea Whāinga Māori 1934–35;
- Te Ture Whenua Rāhui Māori 1955
- Te Ture Kaitiaki Hoia Māori 1957
- Te Ture Poari Kaitiaki Māori 1955;
- Te Ture Kaitiaki Māori 1953;
- Te Ture Whakahaere Whenua Pānga Māori 1954;
- Te Ture Manatū Whanaketanga Māori 1991;
- Te Ture o Orakei 1991;
- Te Ture Ngahere o Tarawera 1967;
- Te Ture Poari Kaitiaki o Tauranga Moana 1981;
- Te Ture o Te Rūnanga o Ngāti Awa 1988;
- Te Ture o Te Rūnanga o Ngāti Porou 1987;
- Te Ture o Te Rūnanga o Ngāti Whātua 1988;
- Te Ture Whenua Māori 1993;
- Te Ture o Te Tiriti o Waitangi 1975;
- Te Ture Poari Kaitiaki Māori o te Awa o Whanganui 1988;
- Te Ture Pāho 1989, Wāhanga 1VA.

I runga atu i tēnei, i whakahaeretia e Te Puni Kōkiri ngā ture ārahi e whai ake nei:

- Raupapa Poari Kaitiaki Māori o Aupouri 1985
- Raupapa Poari Kaitiaki Māori o Aupouri 1986
- Te Ture Ārahi ngā Komiti Whenua Kaitiaki Māori o te Tairāwhiti 1936
- Te Ture Ārahi Utu Kooti Whenua Māori 1993
- Te Ture Ārahi Kooti Whenua Māori 1994
- Te Ture Ārahi Raupapa Nohanga Māori 1994
- Te Ture Ārahi Rāhui Māori 1994
- Te Ture Ārahi Pūtea Whāinga 1937
- Te Ture Ārahi Tari Kaitiaki Māori 1954
- Te Ture Ārahi Hanga Whare Māori 1960
- Te Ture Ārahi Utunga Haere Kaiwhakawā

Koot Whenua Māori 1960

- Te Ture Ārahi Whanaketanga Hapori Māori 1963
- Te Ture Raupapa (Mana) Kooti Whenua Māori 1996
- Te Ture Ārahi Poari Kaitiaki Māori 1985
- Te Raupapa Kaporeihana o Mawhera 1976
- Te Raupapa Poari Kaitiaki Māori o Maniapoto 2002
- Te Raupapa Poari Kaitiaki Māori o Ngāti Whātua o Orakei 1983
- Te Raupapa Poari Kaitiaki Māori o Ngāti Whātua o Orakei 1990
- Te Raupapa Poari Kaitiaki Māori o Ngāti Whātua o Orakei 1997
- Te Raupapa Kaporeihana o Parininihi ki Waitotara 1976
- Te Raupapa Poari Kaitiaki Māori o Te Taitokerau 1987
- Te Raupapa Poari Kaitiaki Māori o Taranaki 1990
- Te Raupapa Poari Kaitiaki Māori o Te Arawa 1988
- Te Raupapa o Te Awapuni Moana 1996
- Te Raupapa o Te Rūnanga o Ngāti Awa 1999
- Te Raupapa o Te Rūnanga o Ngāti Porou 1989
- Te Raupapa o Te Rūnanga o Ngāti Porou 1993
- Te Raupapa o Te Poari Kaitiaki o Whakatohea 1996
- Te Raupapa o Te Kaporeihana o Whakatū 1977
- Te Raupapa o Te Poari Kaitiaki o Te Awa o Whanganui 1996

Kua whakarārangitia ngā mahinga me ngā mana whakahaere a Te Puni Kōkiri kei roto i Te Ture Manatū Whanaketanga Māori 1991, ā, kua whanaketia anō e te Komiti Matua a te Pāremata. Ko ngā mahinga me ngā mana



## KĀWANATANGA3

*I te tau 2005/06 i uru atu a Te Puni Kōkiri ki te kaupapa Kāwanatanga3, ka whai i te tau tuatahi ki te arotahi atu ki te whanaketanga raraunga pūtake ki roto i ngā wāhi e whai ake nei: whakaiti mōumou; whakatika waka kia tiaki hinu; taonga whakapau ngāwari ki te taiao; me te hanga mau pūngao.*





## WHAKAMAHERE URUTĀ

*Ngā mahi a Te Puni Kōkiri ki te whanake i tā mātou whakautu Urutā, ko te arotake atu ki te whakatika i ngā kaimahi, me tā mātou tūranga mahi ki te tautoko i ngā mahinga a te Rōpū Mahi Oranga Urutā Ā-motu.*

20

whakahaere nei e whakahua ana me pewhea a Te Puni Kōkiri whakatutuki i āna mahi ki te whakaoti i ngā whāinga a te Kāwanatanga mō te Māori.

### AROTURUKI ME TE TAKAWAENGA

Ko Te Puni Kōkiri kei te aroturuki, kei te takawaenga i ētahi ake pokapū<sup>1</sup> e whakawhiwhi ratonga ana ki te Māori, mō te Māori rānei, i raro i Tekiona 5 (1) (b) o te Ture Manatū whanaketanga Māori, 1991.

Mai i te tau 2004/05, kua nekehia e Te Puni Kōkiri tāna arotahi me āna rawa, mai i te whakawhiwhi arotake hāngaitanga, pūrongo āta whakamārama, mō ngā mahinga pai,

ki te whakatutuki oritenga i waenga i te aromatawai titiro whakamuri me te titiro whakamua. Kei te whaiwāhi kaha ake a Te Puni Kōkiri ki te taha whakamua o te whanaketanga kaupapa here, ki te whakatau i ngā huanga me ngā rautaki, ki te whakapūmau ka kaha tonu te reo whaiwāhi o te Māori ki roto i ēnei whakaritenga.

I te tau 2005/06, i arotahi atu mātou ki te hanga honohononga mahi tahi, whaihua, ki a mātou mahinga ki te taha o ngā kaiwhaiwāhi ki te whakatinana i ngā whāinga ngākau kotahi, me te huanga rautaki o Ngai Māori e angitu ana hei Māori. He tauira mō ēnei kei te rīpanga i raro nei.

Rohe	Pokapū Kāwanatanga	Mahi kua Maheretia
Tari Matua	DoL, MSD, TEC	Rōpū Mahi Kahika tīmatanga
Tari Matua	MAF Ika	Whakamōhio i ngā take ika tikanga, me te whakahaere take Ika
Tari Matua	Kōmihana Awhina Aroha	Whakamōhio ngā rereketanga ki te tūranga rōpū Āwhina i raro i ngā ture hou
Tari Matua	MSD	Āwhina ki te whiriwhiri i ngā ratonga i waho o ngā kura
Tari Matua	Kōmihana Whānau	Āwhina ki te whiriwhiri i ngā Ratonga i waho o ngā kura
Tari Matua	Rōpū Kāwanatanga rohe o Aotearoa, Kaunihera o Tūranga, Waiariki- uru, me Tauranga	Āwhina pārongo mō ngā nama reiti i runga whenua Māori whānui
Tari Matua	Rōpū Whakaora Oranga ā-motu	Whakarite ngā kōkahu a te komiti Māori ki ngā whakamahere whakaora ā-motu
Te Tai Tokerau	MSD	Whakangungu mahi ā rehe

<sup>1</sup> Tari Mahi, Whanaketanga Hapori, Te Manatū Waka, Te Manatū Hauora, Te Manatū Tikanga-Ā-Iwi, Te Manatū Ahuwhenua, Ngaherehere, Te Tautiaki i ngā Tini a Tangaroa,, Te Tāhuhu o te Mātauranga, Manatū Aorere, Manatū Ture, Te Komihana Mātauranga Kura Tuatoru, Te Manatū Hanga Whare, Te Tari Whakataunga i raro i te Tiriti o Waitangi, Te Manatū Taiao, Te Tari Papa Atawhai, Te Manatū Whanaketanga Ōhanga.

Rohe	Pokapū Kāwanatanga	Mahi kua Maheretia
Te Tai Tokerau	MSD	Wānanga waenga-rāngai
Te Tai Tokerau	MSD	Mahi Tāpoi ki Hokianga
Tāmaki Makaurau	MSD, DHB, Kaunihera o Papakura	Mahere Huanga Hapori Māori
Waikato	MSD	Whakanui ake whaiwāhitanga Māori ki ngā mahi kaunihera
Waikato	MSD, WINZ, HNZA	Hokohoko tikanga mahi
Te Arawa	HNZC	Tuku ngātahi whakatika take Whare – āpiti atu ki ngā hapori e hāngaitia ana
Te Arawa	MSD, Kuratini o Waiariki	Kaupapa kakama whakangungu Mahi ā rehe
Te Moana ā Toi	MSD	Kakama rōpū mahi ōhanga, he wāhanga o <i>Huanga Hapori Waiariki</i>
Takitimu	MSD	Whanaketanga rautaki ki te whakaiti kore mahi
Takitimu	MSD, Whare Herehere, Ture	Whanaketanga rautaki ki te whakaiti hara i waenga Māori
Takitimu	MSD	Whakaiti kore mahi - kaupapa motuhake e here ana ki <i>Kaitiaki Te Hiko</i> kei Te Whanganui a Orotu
Takitimu	MSD, TEC, MoEd	Whakatū whakangungu mahi ā rehe Marae ki te taha o ngā kaiwhiwhi whakangungu kua rēhitatia, me ngā pokapū ake
Te Whanganui ā Tara	MSD	Kakama Whakangungu Mahi ā Rehe Māori
Te Whanganui ā Tara	MSD, Herehere	Rapu huarahi mō te Kaupapa Kōmitimiti Mau Herehere
Te Tai Hauāuru	Herehere	Whakaiti hara i waenga Māori – kaupapa tuku matakana Te Wairua o ngā Tāngata Māori



## KIMI KAIMAHI

*Kua whakaūtia e Te Puni Kōkiri tētahi ritenga ā-roto hei whakahaere i te roanga wā ki te kimi kaimahi hou ki roto i te rōpū. Kua whakatauria te paearu, e 32 ngā rā, e rite ana tēnei ki te wā kua whakaritea e te ahumahi kimi kaimahi mō te Rōpū Ratonga Tūmatanui o Te Whanganui-ā Tara. Kua whiwhi āwhi-natanga ngā kaiwhakahaere a TPK ki te whakatutuki i tēnei whāinga, ā, ināianei e kimi ana i ētahi tikanga pai kia tutuki ki te 28 rā te tau toharite.*





## WHAKAMAU I TE KAUPAPA TAHUA MONI WHAKATĀNGA RANGAI KĀWANATANGA

*Kei te kaha te whanonga pupuri moni me te tautoko i te Kaupapa Tahua Moni Whakatānga Rāngai Kāwanatanga a te kāwanatanga ki Te Puni Kōkiri. Kei te ōrite tata mātou ki ērā ake o te Ratonga Tūmatanui, me te tau toharite e whā tekau mā whā ōrau o ngā kaimahi e whaiwāhi ana ki te kaupapa, kei runga ake i te toru te kau mā whitu ōrau kei runga i te Ratonga Tūmatanui whānui.*

Kua whakahāngai kaha tonu mātou ki ngā mahi arotake, takawaenga mā te aromatawai i a mātou mahinga hanga māramatanga i ngā mahinga huanga ka arataki i a mātou whakahaumi ā-mua. Kua hangaia, kua whakatikaina e mātou he arotahi me ngā taputapu hei whakatutuki i te whāinga i te Whakatinana Pūmanawa Nohopuku Māori me te whai tonu kia wairua auaha mātou ki te tautuhi huarahi ngārahu ki te tuku ratonga hāngai, tika mō te Māori.

Ahako te arotahi i waenga i te tau 2005/06, ko te whanake honohononga mahinga ngātahi, tauwhāinga; ko te arotahi mō te tau 2006/07, he whakawhānui ake i ngā mahinga kua tīmatahia, ki te whakapūmau kia hopukina ngā pārongo mō te kairangi o ngā mahinga, hei whakamārama i ngā ara mahinga pai, me te whakatairanga ki runga i ngā pokapū kāwanatanga ake. I konei, ko te mea nui ko ngā kaupapa e mahi pai ana mō te Māori.

I ngā wāhi e whakaatu ana e ngā taunakitanga, kahore i te mahi pai mō te Māori, tērā ka whakamahia he ara whakamātautau, ki te arotake me te hanga pārongo e pā ana ki:

- ngā take tuatahi Māori motuhake
- ngā take tuatahi a ngā Rōpū
- ngā take tuatahi kua pānuitia e te Kāwanatanga.

I roto i ēnei take tuatahi, ko te whakaaro ki te whakatairanga painga ngātahi, me te whakapakari i ngā honohononga tōrunga.

Hei wāhanga o te Ara Pūmanawa Nohopuku Māori, ka whakapau kaha a Te Puni Kōkiri ki te rapu i ngā huarahi kia mahi ngātahi, kaha ake, ngā pokapū rāngai tūmatanui katoa ki te

whakapūmau ka maurua kore, ka kōmitimiti, ngā mahinga ka tukuna e rātou.

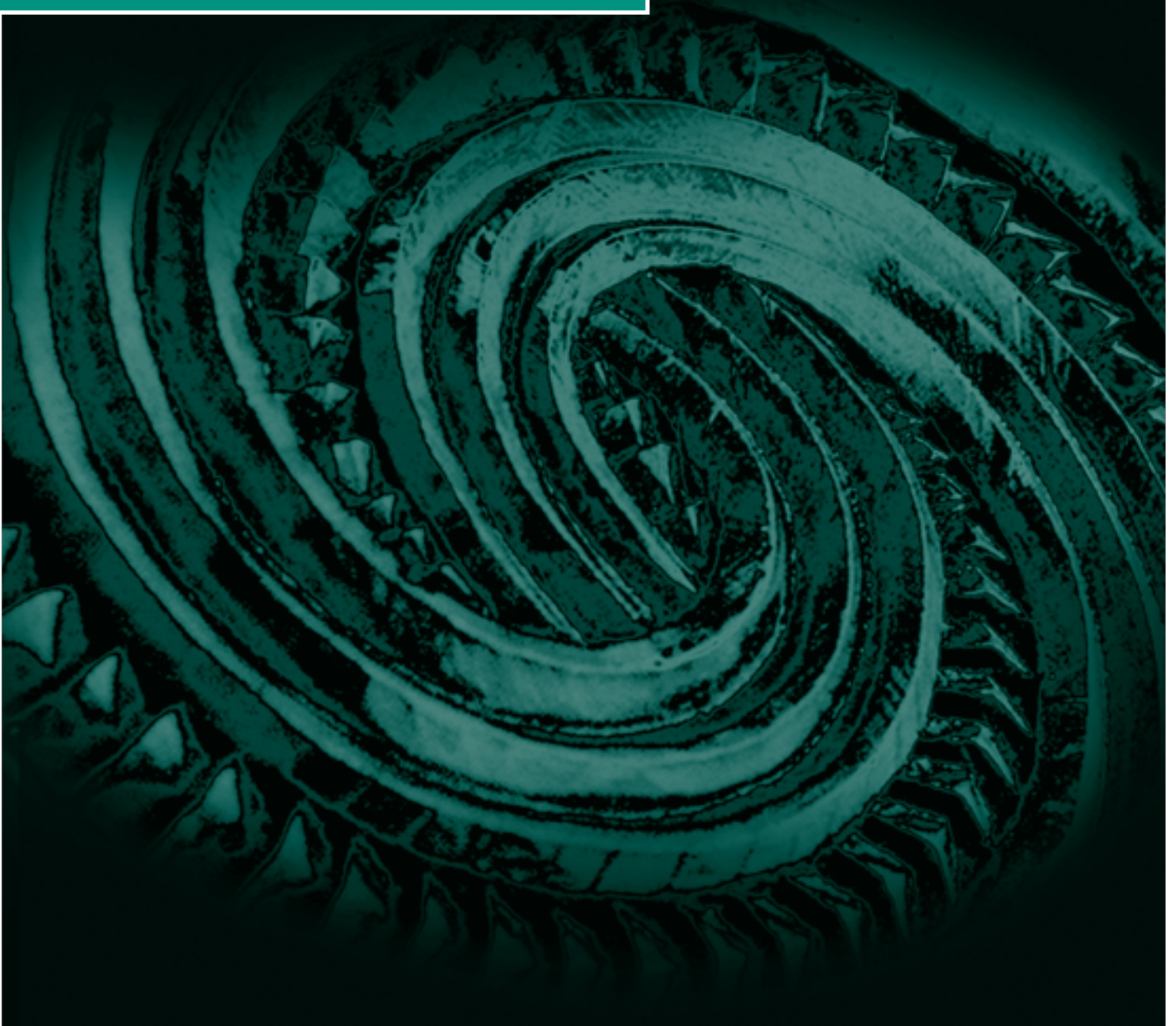
Ko tēnei mahi kakama ka kīnaki atu i ngā whakahaumitanga kua oti kē te tuku i roto i ngā kupenga mahinga ā-rohe, kei konei ngā kaimahi Kāwanatanga hou, e 103, e mahi honohono ana ki te Māori. E 33 o ēnei kaimahi hou a TPK kei ngā rohe, e mahi pono ana ki ngā kaupapa pūtea o Kaitātaki-Ā-Rohe me Kapohia ngā Rawa.

## AROTURUKI I NGĀ MAURI KARAUNA

I whakahaeretia ngā mahi aroturuki i a Te Māngai Pāho (TMP), Te Taura Whiri Te Reo Māori (TTW), me Te Ratonga Pouaka Whakaata Māori (MTS), i roto i Te Puni Kōkiri, e te rōpū wae Whakararu me te Whakatūturu, me ngā kōkuhu a te wāhanga Kaupapa here, me te wae Moni. Rite tonu te whiwhi pūrongo ia toru marama, mai i ia mauri, me ngā hui rite tonu ki a rātou.

I tua atu, i whakawhiwhi tohutohu a Te Puni Kōkiri mō te whanaketanga i ngā pukapuka whakamahere take nui, pērā i ngā Pānui Whāinga. I roto i ēnei whakaritenga, i whai atu a Te Puni Kōkiri ki te whakapūmau i āta whakaarotia e ngā mauri nei, ngā whāinga me ngā mahinga a te Rautaki Reo Māori, i roto i a rātou mahi whakamahere me ngā mahi pūrongo.

 PĀNUI O TE MAHINGA  
RATONGA





# KAUPAPA HERE ME TE AROTURUKI – HAPORI ME NGĀ TIKANGA

## WHANAKETANGA WHĀNAU

I runga i te mōhio ko te whānau tonu te kaiwhakakōkī hei hanga rerekētanga tōrunga i waenga i a rātou, me ngā kohinga hapū, whānau whānui ake, ka whakamaua ngā kaupapa mahi a Te Puni Kōkiri ki runga i te rapunga whakaaro o *Ngai Māori e angitu ana hei Māori*. Me tā mātou mahi ki te para i ngā huarahi maha, me ngā kōwhiringa mō ngai Māori kia angitu ki roto i ngā wāhi katoa e hiahia ana rātou. Ko tētahi o a mātou mahinga pēnei, ko te whakahaumi atu ki ngā whānau. I tīmatatia te kaupapa whakapakari whānau: Mahinga me ngā Rangahau (WWMR) ki te kohikohi i ngā pārongo me ngā raraunga mō mātou, hei hanga i ngā kaupapa here e tautoko tika ana ki ngā hiahia me ngā manako a ngā whānau. Ko ngā tutukitanga take nui i tēnei wā, ko:

- Ngā tataritanga mārāma rawa atu a te kaupapa WWMR, ngā whakawaia o te tau 2004/05, me ngā whāinga mō te tau 2005/06;
- Ngā tauira whakahaere a te WWMR kua tuhia, hei whakaatu i ngā whakaaro whānui o ngā mahinga Pūmanawa Nohopuku Māori;
- Ngā wāhi huanga kua whakatautia me ngā pātai rangahau mō WWMR motuhake i tīmatatia i te tau 2005/06;
- I oti te mahere rangahau; me
- I oti anō te ara rangahau mō WWMR, me te whakatū i ngā kairangahau mō ngā papanga e 13.

## Whanaketanga Whānau: Mahinga me ngā Rangahau (WWMR)

E whai ana te WWMR ki te: whakapai ake i ngā māramatanga kaupapa here, whakamahinga, o te āhua o te whānau: te tautuhi i ngā hiahia raukaha me te pakari mō te whānau: me te āwhina i ngā whānau ki te whakamātau me te whakapai ake i te pakaritanga me te māiatanga o ngā ara ki te oranga whānau me te angitu, me ngai *Māori e angitu ana hei Māori*.

I te tau 2005/06, i mahi motuhake a Te Puni Kōkiri ki runga, me te whakawhiwhi tirohanga hohonu ake, ki ngā kaupapa whakaāhehi, te Whakamana, te Mātauranga me ngā Rawa, ā, mā konei ko ngā painga kā tau atu ki te Ira Tangata. E toru ngā peka uhō o tēnei ara kaupapa whānui: ngā mahinga kakama; ngā rangahau; me ngā hanganga ngātahi whānau motuhake.

## Mahinga Kakama Whānau Motuhake

1. I roto i te wāhi *Mātauranga*, ko ngā mahi kakama ko: tētahi mahinga whakamātau i te mōhio ki ngā tikanga moni; te whakamātau i ngā kaha whakawhiwhi mātauranga, me ngā whanaketanga pūmanawa kia taea te whakahaere hāngai i ngā taonga whānau; he pukapuka mō te whakawhiwhinga (ki ngā whānau whānui) o te kohinga mātauranga a Hekenukumai Busby; he kaupapa mahinga ki te whakamahi anō i ngā taiohi ki ngā huarahi akoranga whaikiko me te whaiwāhitanga a ngā whānau katoa; me te whakarite i ngā

hiahia whānau ki te whakapakari i tā rātou reo.

2. I roto i te wāhi *Rawa*, ko ngā mahi kakama ko: te whakamātau i te āhua me te rahi o ngā rawa whānau, me ngā kōwhiringa ki te whakamahi tauwhiro: te whanaketanga i ngā taputapu/raua hei whakahaere i ngā rawa taiao: te whanaketanga me te whakamātau i ngā rawa hei tautoko i ngā whakamaherehere me ngā mahi whakatakoto tuatahi: te āta rapu i ngā haurahi wātea whanake Mārae.
3. I roto i te wāhi *Whakamana*, ko ngā mahi kakama ko: te whakamātau i ngā whawhai pūmau, me te kinakitanga o ngā mahinga tikanga tawhito, tikanga hou (āpiti atu ki ngā āhuatanga arumoni) o ngā taonga whānau – te mea nui ko te whakahaere hāngai i te kaitiakitanga, te whanake i ngā taputapu hei tautoko kaiārahitanga whānau hāngai, me te whakamahere kairiwhi: me te whanake i te raukaha whānau ki te hanga whakataunga mārama, me te whakahaere hāngai pai.

I tuku pūtea anō ki runga mahinga kakama rangahau motuhake mō te rangahau i te whanaketanga ōhanga o ngā whānau hei ohu, i roto i ngā āhuatanga umanga pakupaku, mahinga papanga whenua, me te whaiwāhitanga o ngā whānau ki roto i te whanaketanga ōhanga iwi.

I te 30 o Pipiri 2006, e toru, o ngā pūrongo rangahau whakamutunga e whā, i tae mai. I te tātaritia ngā kitenga hei takoha atu ki tētahi pūrongo whakamutunga ki te Minita mō ngā Take Maori, i mua i te 31 o Here-turi-kōkā, 2006. Ko te kaupapa tuawhā i whaiwāhi ki te whakamahinga o tētahi tikanga whakamātau mōhio take moni ki nga kura e rima, me ētahi

whānau kei Te Waipounamu. I runga i te tōmuritanga o te whakotinga kirimini ki ngā kura nei, nō te tata mutunga o te tau 2005/06, kātahi ka tīmata ngā mahi arotake. Ko te whakaaro ka oti te arotake i mua o te 30 o Mahuru 2006.

Kua whakaurua tētahi pūrongo, mō te haerenga kaupapa whakanake whānau, me te rautaki 3 -5 tau i mua o te 30 o Pipiri 2006, ki roto i ngā mahinga e whakahoā ana ki te Ara Pūmanawa Nohopuku Māori.

## KAIĀRAHITANGA ME TE WHAKAHAERE

I runga i te whakaaro whakaāe kei te Māori tonu te raukaha ki te ārahi i tā rātou ake whanaketanga, me te whakamana i ngā wāhi e tautoko ana i te whakatinanatanga o te pūmanawa nohopuku Māori, kei te ārahi tonu a Te Puni Kōkiri i tētahi kaupapa Tauira Whakahaere hou mō ngā kohinga tāngata Māori me ngā mahinga take nui, ētahi e whai ake nei:

- Te otinga o tētahi arotake ture tohungatanga;
- He arotake i ngā whakarite kaupapa here i puta mai i te pūrongo a te Komihana Ture hukihuki;
- Te rōpū mahi i te taha o ngā Kaikōmihana Ture ki te āta titiro ki ngā takotoranga kaupapa here: me
- Te whakamanatanga a te Komiti Matua Pāremata kia rārangitia ngā mahinga ki te whakatutuki i ngā takotoranga kaupapa here mō tētahi tauira whakahaere ā-ture mō ngā kohinga tāngata Māori.

## TAUIRA WHAKAHAERE

I te mahi a Te Puni Kōkiri ki te hanga kaupapa here mō tētahi tauira whakahaere,



i hangaia motuhake ki te whakatutuki i ngā hiahia a ngā ohu Māori ko rātou nei i te whakahaere ngā taonga me ngā rawa hapori. I whakamāramatia ēnei mahinga e ngā whakautu o ngā whiriwhiringa tūmatanui whānui, me ngā whakaaro a ngā tari kāwanatanga me ngā kaiwhaiwāhi piritata. I te mahi tata anō a Te Puni Kōkiri ki te Kōmihana Ture i runga i ngā take e whakapā ana ki ngā whakahaere Māori.

I whakawhiwhi te tauira whakahaere hou i tētahi pou tarāwaho pakari, ngāwari ake ki ērā e whakamahia ana ināianei. Ka kaha ake ngā ohu Māori ki te whakarite i a rātou mauri whakahaere kia rite tonu ki a rātou ake rahinga, papa taonga, mahinga me ngā whakahaere. Hei tauira, ka taea e te whānau te hanga i tētahi mauri mō te whanake whenua, e te hapū ki te whakahaere ngā mahinga marae, me te iwi ki te whakatutuki i ngā tikanga kaupapa here kāwanatanga mō ngā mauri whakahaere, ā-muri i ngā whakataunga.

I whakatōmuriā mō te rua marama te pūrongo whakautu, tōna tikanga me oti i te 30 o Pipiri 2006, kia āhei te whakahaere o te arotakenga i ngā taunakitanga i roto i te pūrongo a te Komihana Ture, a *Waka Umanga: He kaupapa ture mō ngā mauri whakahaere Māori*. Mēnā ka whakaāe te Komiti Matua a te Pāremata ka whakatakototia te ture a te tau 2007.

## TIKANGA

I te haere tonu ngā mahi whaiwāhi a Te Puni Kōkiri ki ngā pokapū e ārahi ana i te Rautaki Reo Māori, me te hanga i tētahi pūrongo tīpoka ki ngā Minita mō te haere o ngā mahi, i te marama o Whiringa-ā-Rangi 2005. He

nui ngā mahi kua oti ki te whakatairanga i te whaipanga o ngā tikanga, te reo, me ngā taonga tuku iho Māori hei painga mō ngai Māori ngātahi, whānau, hapū, me iwi, ki te whakatenatena i te tuakiritanga, me te whaiwāhitanga a te Māori ki te whanaketanga o tā rātou tikanga, reo, me ngā taonga tuku iho.

## Reo Māori

I te tau 2005/06, i te ārahi tonu a Te Puni Kōkiri i te whakamahinga o te Rautaki Reo Māori (RRM). Ko te RRM e whakamārama ana i ngā whāinga me te tūranga a te kāwanatanga ki te tautoko i te tipuranga me te whanaketanga o te reo Māori. Kei a Te Puni Kōkiri te mana whakahaere whakaritenga me ngā arotakenga i waenga pokapū.

Hei wāhanga o ēnei mahi, i whakahaeretia e Te Puni Kōkiri ētahi huihuinga ki ngā pokapū o RRM, ki te tautoko i ngā mahi whakamahere me ngā whakamahinga a ngā pokapū kē, me te whakatū hui ki te whiriwhiri i ngā whakaritenga a ngā pokapū e pā ana ki ngā take reo Māori.

Kei te mahi tonu ngā pokapū kaiārahi ki te whakapakari me te whakapiri i ngā kaupapa mahi me ngā kaupapa here atu ki te RRM, me te puta o ngā taunakitanga kei te whakapakari rātou i ā rātou mōhiotanga tino whai tikanga e pā ana ki te reo Māori. E haere tonu ngā whakamahinga i te RRM i roto i ngā rāngai take nui.

I whakawhiwhia e te RRM te hiringa mō te whanaketanga o ētahi mahi kakama hou i te tau 2005/06, āpiti atu ki ngā mahi whakamahere, me ngā whakamahinga o te kaupapa *Whanaketanga Reo Whānau*, ka

tukuna atu ki nga hapori i waenga i te tau 2006/07, me nga mahi rangahau whānui mō ētahi wāhanga take o te reo Māori. I roto i ngā kaupapa rangahau kō tētahi tirohanga whakamātautau i te *Oranga o te Reo Māori*; me te whakahaere maherehere ki te kaute i ngā kaupapa mahinga me ngā ratonga e whakawhiwhia ana i roto i te rāngai Kāwanatanga. I whakaotia ano *Te Rangahau i ngā Waiaro atu ki te Reo Māori* i te tau 2005/06. Kua whakaritea te mahinga tūturu a ngā kaupapa rangahau i waenga i te tau 2006/07.

#### Pāhotanga Māori

Kei a Te Puni Kōkiri te mana whakahaere rautaki, whakamahinga, ki roto i ngā pāhotanga Māori. I te tau ki muri, i mahi a Te Puni Kōkiri ki te whapakari i ngā take rautaki o te pāhotanga Māori me te whakatakoto i te whanaketanga o te Rautaki Whakapāho Māori atu ki te Ara Pūmanawa Nohopuku Māori. Ka arotahi atu tonu ngā mahinga ki te whanaketanga rautaki a te tau 2006/07.

I waenga i te tau 2005/06, i whakahaeretia e Te Puni Kōkiri tētahi tikanga ki te arotake i ngā mahinga a ngā teihana reo Irirangi ngā auau rāhui Māori, me te whakaotinga anō o tētahi rārangi o ngā kaupapa rangahau i rapuhia te takoha o ngā pāhotanga atu ki ngā mahinga whakapakari i te reo Māori. Ka whakamahia ngā kitenga o ēnei mahi ki te whakamōhio i ngā tohutohu kaupapa here e haere tonu, me ngā mahinga whakamahere ki roto i te rāngai pāhotanga.

I tua atu, i te mahi tonu a TPK ki te aroturuki i ngā mahinga a ngā rōpū pāhotanga Māori ki te whakapūmau e hāngai tonu ana ngā mahi kakama ki te tautoko i ngā kaupapa here

me ngā mahinga, ki te tuku huanga hapori, tikanga tōkeke mō te Māori.

#### Ara Pūmanawa Nohopuku Māori

He ara wairua auaha, titiro whakamua tenei te whakatinana i te Pūmanawa Nohopuku Māori, e whai ana ki te whakatere i te Māori mai i te maurutanga waenga reanga, atu ki kaitakoha mahinga kaha ki te ōhanga me te hapori o Aotearoa. Koia nei kē, ko te oranga kairangi pai ake e arotahi ana ki ngā tāngata Māori tonu hei kaiwhakakōki take nui mō ngā whakarerekētanga. Koia nei anō e whakaponu ana kei te Māori tonu te raukaha, te tohu kakama, me ngā hiahia ki te hanga kōwhiringa mō rātou ake, me te rapu huarahi wātea mō rātou, ka tautoko i tā rātou tuakiri tikanga me te takoha atu ki te kairangi oranga pai ake, i te mutunga.

Ko te whanaketanga nui tonu i te tau 2005/06, ko te whakaētanga a te Komiti Matua a te Pāremata, ki te whakatūtanga o ngā utunga whakaputa tari-kore hou (UWTH), hei whakatakoto ki ngā whakaritenga pūtea a Te Puni Kōkiri ki te Ara Pūmanawa Nohopuku Māori. Ko ēnei kaupapa e toru nei, te Whakamana, te Mātauranga, me te Rawa, koia nei ngā hononga hāngai ki te whakahaumi rautaki ki ngā wāhi e whakamōhioia ana mā roto i te Ara Pūmanawa Nohopuku Māori.

Heoi, kua whakaurua ngā mahinga a te pūrongo rārangi-papa ki roto i ngā mahinga Matapae Ōhanga me te roa ake o te wā hei whakaoti. Tōna tikanga me oti kē te pūrongo i mua o te 30 o Pipiri 2006.

I runga i ērā whakataunga, kua whakatōmuri te whakaotinga o te kete taonga Pūmanawa Nohopuku Māori ( me



whakaoti anō i mua o te 30 o Pipiri 2006 )  
kia mahia ētahi ake wāhanga hou o te kete  
taonga. Ko te hiahia ka oti te kete taonga i  
mua o te 30 o Pipiri 2006, i te mea ka tuku  
pārongo atu mā te tohungatanga mahi  
kia mahia te ara i raro i a mātou mahinga  
maherehere, haumi, aroturuki me ngā arotake.

Ko ngā mahi ka oti i te wāhanga moata o te  
tau 2006/07, ko:

- te whakamahi i te rautaki Whakawhitiwhiti  
kōrero, hei whakamōhio i te hiahia a Te  
Puni Kōkiri ki te whakatinana i te Ara  
Pūmanawa Nohopuku Māori;
- te whakarite Huihuinga ā-rohe ki te tuku  
huinga whakangungu mō ngā huanga, ngā  
tohu, ngā mahinga tōtika, me te pukenga ki  
te kōrerorero rautaki;
- te mahi tonu ki te hanga taituarā, me  
ngā taonga hei tautoko i ngā kaimahi  
e whakatinana ana i te Ara Pūmanawa  
Nohopuku Māori; me
- te hanga i tētahi ara meiha aroturuki,  
arotake, rangahau, mahinga ka whakaatu  
i ngā whakamahere me ngā hopunga '  
Wāhi puta Tohutohu Pūmanawa Nohopuku  
Māori'.

# KAUPAPA HERE ME TE AROTURUKI – ŌHANGA ME NGĀ HINONGA

Ārahi i tētahi kaupapa rangahau e arotahi ana ki te whaiwāhitanga hokohoko Māori. I runga i te mōhio mā te whaiwāhitanga kaha, whai tikanga, a te Maori ki roto i ngā hapori, ahakoa ā-kāinga, ā-motu, ā-ao rānei, ka whakawhirinaki atu ki te āhua oranga a ngā kohinga tāngata, a te tangata kotahi rānei, ka ārahi e Te Puni Kōkiri tētahi tuhinga hōkai mō te whanaketanga ōhanga Māori, e tirohia ana ki ngā huarahi mahi, mātauranga, me ngā hinonga. I whakahautia e te whakaputa kia hangaia tētahi pūrongo, mō te whaiwāhitanga hokohoko Māori, me whakaotia i mua o te 30 o Pipiri 2006, heoi, ngā mahi i oti i te tau 2005/06, kua whakaurua ki roto i te taura matapae ōhanga Māori – hei mutunga hāngai mai i te Ara Pūmanawa Nohopuku Māori.

I te mutunga ka puta kō tētahi *Pūrongo Matapae Ōhanga* a te tau 2006/07, hei pānui i te aromatawai o ngā pukenga, ngā tikanga, me ngā taiao, ka whakatū i a ngai Māori ki te hopu ka whakamau i ngā painga kei ngā huarahi nei, i runga i ngā tau 10 – 20 kei mua.

## Hui Taumata

I tautoko te Hui Taumata 2005 kia mahi wehe te Māori mō te whanaketanga ōhanga. I whakatūria te Rōpū Mahi Hui Taumata, me te tautokohanga a te Kāwanatanga, ki te whakahaere i ngā rautaki a te Hui Taumata 2005. Ka mahi te Rōpū Mahi ki te whakahaere rangahau me ngā kaupapa mahinga i raro i te pūtea Wāhanga Take Māori, me te honohono atu ki te Māori, ngā umanga, ngā uniana kaimahi, me ngā rāngai taha mātauranga,

kāwanatanga. I whakahau te Komiti Matua a te Pāremata kia hanga pūrongo a Te Puni Kōkiri, ia hauwhā, mō ngā mahinga a te Rōpū Mahi, me te hanga i tētahi arotake mōhiotanga o ngā whakatutukitanga a te Rōpū Mahi mō te tau 2005/06, me tētahi taunakitanga mō te tautokohanga a te kāwanatanga mō te wā kei mua.

E toru ngā ahuatanga tautoko a te Rōpū Mahi ki ngā rautaki a te Hui Taumata 2005; te hanga rautaki mō te whanaketanga ōhanga Māori, ngā kaupapa mahinga ka takoha atu ki ēnei rautaki, me te whakahaere honohononga i waenga i te Māori me te rāngai take nui o te ao ōhanga. Te kaumārua ngā kaupapa kua tīmatata ki roto i ngā wāhi pērā i te whakanaonga wāhi mahi, rakahinongatanga, kaiārahitanga i roto i ngā whakahaere, me te whakahou raraunga ōhanga. Ka whakapiri hāngai ēnei ki ngā rautaki a te Hui Taumata 2005, o te whakapakari raukaha Māori, te tautoko kaiārahitanga me ngā whakahaere hiranga, te mahi ngātahi me te mahi whakahoā, me te arotahi atu ki ngā whakatutukitanga tino pai me ngā huanga kairangi. I tuku pūrongo a Te Puni Kōkiri ki te Komiti Matua a te Pāremata, mō a rātou mahinga, kua whakaotia hoki tētahi arotake whānui mō a rātou whakatutukitanga. Me te tohu o te arotake ka whakawhiwhi e ngā whakatutukitanga o ngā taumata hanga nui tonu mō ngā wā kei mua, arā, te pōhewatanga a te Hui Taumata. He rite tonu te mahi ngātahi a te Rōpū Mahi ki te Māori, me te whakaatu i ngā tautokohanga kaha tonu mō tā rātou



takoha atu ki te whanaketanga ohangā Māori.

#### Whanaketanga Whenua Māori; Te Huarahi Whakamua

I te whaiwāhi kaha tonu a Te Puni Kōkiri ki te ara Kāwanatanga katoa mō te whanaketanga whenua Māori, me te ārahitanga motuhake ki te:

- Whakahaere tonu i ngā kaupapa mahi, āpiti atu ki ngā kaupapa whakangungu, e hāngai ana ki te tautoko whakahaere me te āwhina ki te whakangāwari huarahi ki ngā take pārongo, me ngā take moni;
- Arotake ngā hua o ngā kaupapa motuhake, e rua tekau mā whā, inātata nei, me te tuku pūrongo mō ngā huarahi tautoko i te whanaketanga whenua Māori; me te
- Whakatūtanga me te mau i te tūranga Tiamana mō tētahi rōpū āpiha mātāmua o ngā pokapū Rāngai Kāwanatanga e waru, ki te whakapai ake i ngā whakawhitinga kōrero me te whakahaere i tētahi ara Kāwanatanga katoa mō ngā take whenua Māori.

Mō te arotakenga o ngā kaupapa e whai ana ki te tautoko whanaketanga whenua Māori, 16 ngā kaupapa i whakaratohia hei arotake, i tēnei wā, 12 kua oti. O ēnei, e 7 ngā kaupapa i tutuki angitu ki te whakatairanga tipuranga umanga, me te whanaketanga whenua tauwhiro. E rima ngā kaupapa kahore i oti angitu, me ngā momo take i pēnei ai, kei te whakamātautia ngā huanga o ngā kaupapa toenga e rua, i te mea kei roto rāua i ngā mahinga moata noaiho. I runga i te tātaritanga tuatahi o ēnei hua, ka taea e ngā āpiha te hanga whakataunga whānui i ngā wāhi ka taea te Kāwanatanga i te āwhina ake i te Māori, ki te whanake i a rātou rawa whenua.

#### Ratonga Whanaketanga Pakihi Māori

- te whakahaumi atu ki te Ratonga Whakaritenga Pakihi (RWP)
- te whakahaere i te Pūtea Whanaketanga Hinonga Whānau (PWHW)
- ngā whakaritenga kōhari me te whakatū
- kaupapa akopono whakaritenga whenua
- ratonga Akopono Whakahaere

#### Ratonga Whakaritenga Pakihi (RWP)

I roto anō ko te whakatūtanga i ngā mahi kakama mō ngā akopono motuhake mō RWP, me ngā kaupapa tohutohu tohungatanga hurihanga, ngā whakahaere, me ngā kaupapa whakaritenga whenua.

Ko ngā whakaputa ko:

- 782 ngā rēhitatanga ( whāinga 1000 ) i tae mai mō ngā āwhina RWP. Kahore i eke ki te whāinga nā te roa o te wā i pau ki te whakatau i ngā tono kia pūmau ko rātou anake ko ngā umanga "matatatau pakihī" me te "tauwhiro" ka rēhitatia, ka āwhinatia e te ratonga.
- 317 ngā pakihī Māori hou, tāwhito rānei i whiwhi āwhina whakatīmata umanga ( āpiti atu ki te whakanui me te hurihanga umanga ) ahakoa te whāinga i te tīmatanga kia 200 ngā pakihī hou. Tata ana ki te 60 ōrau te pikinga ki runga ake i ngā wawata.

Ko tētahi miramira nui i te tau 2005/06 ko te toa mō te Tohu Angitu Tautoko Pakihī a Veros, i whakanui i ngā tautoko nui tonu a Te Puni Kōkiri mō ngā Whakahoia Rāngai Tūmatanui/Tūmataiti. I te rere tonu ngā Tohu ki te taha o te Whakaaturanga Umanga Pakupaku angitu, i te mea neke atu ki te 7000 ngā kaupupuri pakihī o Aotearoa i haere atu, i te marama o Haratua 2006. Ko te wā tuatahi tēnei i whakaatutia he Wāhi Whanaketanga

Māori piripono ki te Whakaaturanga – he mahi kakama i ārahitia e Te Puni Kōkiri ki te whakaatu i ngā toa pakihi Māori.

Ka whakahaere e te RWP tētahi taura tukunga hou a te tau 2006/07, me te nekehanga arotahi rautaki ka kitea te tautoko i ngā pakihi e tipu ana, e tauwhiro ana, me te whakahāngai atu ki ētahi rāngai (ICT, rāngai auaha, pūngao tauwhiro) motuhake. Heoi, kei te whakaaro ki te tautoko tonu i ngā tīmatanga umanga.

#### **Pūtea Whanaketanga Hinonga Whānau (PWHW)**

I te tau 2005/06, i tautoko a Te Puni Kōkiri i ngā whakaritenga o ngā rōpū e tautoko mahinga whakahono, papa ngātahi i te whakatairanga umanga Māori rānei.

#### **Mahinga Kōharinga me ngā Whakatūtanga**

He rite tonu ngā mahi whakatika i ngā mahinga kōharinga me ngā whakatūtanga ki runga i te rāngai kāwanatanga, e 5.4% te pikinga o ngā mahinga i te pātengi raraunga mō te rāngai kāwanatanga whānui.

#### **Kaupapa Akopono Whakarite Whenua (KAWW)**

E 58 ngā rōpū pupuri whenua kua whiwhi akopono ki te 30 o Pipiri 2006, ahakoa e 30 noaiho ngā rōpū pupuri whenua i whakaarohia e Te Puni Kōkiri ki te āwhina. I tīmata te wā arotake KAWW i waenga i Kohitātea 2006, i te mahinga o tētahi arotakenga papa whenua kōkau. E 25 ngā poraka i toroa, i reira ngā whiriwhiringa i waenga i te Kaitiaki Māori, ngā kaipupuri whenua, me ngā kaiakopono. E 100 % (te whāinga e 80%) ngā kiritaki i whakautu mai, he kaupapa 'whaihua' atu ki te kaupapa 'whaihua nui rawa atu' te KAWW,

me te kī a ngā poraka kiritaki katoa i toroa, he kaupapa whaihua te KAWW mō a rātou mahi whakamahere/whanaketanga.

#### **Ratonga Whakapono Whakahaere**

I whakaotia tētahi kaupapa whakamātau ki ngā marae e 5, o Mahia, me ngā hua pai i puta ki ngā poari me ngā komiti, i whiwhi mōhiotanga whānui ake, ngā tūranga me ngā mana whakahaere; o ngā take me ngā whakaritenga whakahaere; me ngā āhuatanga ki te whakatakoto i ngā taputapu me ngā mahere mō rātou. I tua atu, ko ngā huanga tōrunga e pā ana ki ngā take iwi whānui kia mārama ki ngā tūranga, ngā rautaki, me te whakamahere kairiwhi.

Te kaupapa whakamātau tuarua, te āwhina i tētahi Poari Kaitiaki, i whakapā tōrunga kaha tonu ki te āwhi kia hangaia tētahi ara mahere rautaki me te whakaū māramatanga mō ngā whakahaere me ngā mahinga a te Poari. I mahi anō ki te hanga i tētahi pukapuka ako mahinga mō taua poari motuhake.

Te kaupapa whakamātau tuatoru i whakahaeretia ki tētahi rōpū iwi e whanake ana i tā rātou anga whakahaere, ngā rautaki, me te matakite hei whakatika ki te whiwhi i tā rātou whakataunga i raro i te Tiriti. Te ara ki te tuku i tētahi rōpū tohutohu tohunga hei āwhina ki te whakawhiwhi 'māramatanga' ki ngā kaiārahi kia mōhio pai ki a rātou tūranga whakahaere i ngā momo kaupapa pērā i te tikanga, te moni, te kairiwhi, me ngā rautaki. I whai anō ki te whakawhiwhi āwhinatanga e hiahia ana ki te whakamau i a rātou whakamahinga kia tika mō te whiwhi me te whakahaere i ngā rawa me ngā rautaki ka haere tonu.





### Pārongo Pae-Ipurangi Whakahaere

I te wā 12 marama ki muri, ka tāpiritia he rauemi tuhi hou ki "Te Pae-Ipurangi Whakahaere Hāngai" āpiti atu ki ngā rangahau take a Te Whetereihana o ngā Mana Whakahaere Māori/Te Puni Kōkiri, he rauemi tuhi mō ngā anga-maurea me ngā tuhinga whakahaere rangatōpū i roto i ngā pukapuka. Kua kitea he tipuranga nui tonu o te maha o ngā kaitoro, mai i te 1000 ki te 4000 kaitoro ia marama. Kua oti anō ētahi tātaritanga hei

hanga i te āhua o ngā whanaketanga rauemi tuhi, me ngā taputapu, ngā tauira e pā ana ki ngā mahi whakahaere.

E rua ngā tuhinga i roto i te raraupapa *Hikoipoari*, kua oti te tuhi, ka oti te whakaputa i te 30 o Pipiri 2006. Te tuatoru kei te noho āhua hukihuki, me ngā tuhinga e rua, mō te rarāupapa, kei ngā wahanga mahi whakatika. Kei te haere pai ngā mahi ki te whakaoti kia 5 ngā raraupapa mō te rua tau.

# KAUPAPA HERE – HONOHONONGA KARAUNA – MĀORI

Ko ngā whakaputa motuhake ko:

## Rawa Taiao

Ngā rawa taiao nei ko ērā taonga tuku, kua riro ki te Māori, e pā ana ki te whenua, te wai, me te rangi, e mau whakahira nei ki ngā wāriu tikanga, te whanaketanga ōhanga, me ngā honohononga Karauna – Māori. I ūhia e ngā mahi kaupapa here a Te Puni Kōkiri ngā rawa taiao, me ngā rawa ā-tinana, e tiaki ana i ērā honohonongā tikanga, ōhanga, e whakahaeretia ana e ngā iwi, ngā hapū, me te Māori ki ngā kaunihera ā-rohe, kāwanatanga pāremata rānei. I te tau 2005/06, he nui ngā mahi i oti, i tuhia ki roto i tētahi pukapuka tāpae – *Te Whakatinana i te Pūmanawa Nohopuku Māori: E Huanga ana mai i ngā Rawa Taiao*, me te whakamanatanga a te Komiti Matua a te Pāremata i te 16 o Pipiri, 2006.

Kirimini Honohono Karauna Māori<sup>2</sup> – i hangaia e Te Puni Kōkiri me te Manatū Ture te rautaki whakawhiwhiti kōrero ki te pānui i ngā Aratohu o KHKM; whakawhiwhi tautokohanga ki ngā Minita me ngā tari e whakamau ana i ngā aratohu me te āwhina i ngā mauri Karauna. I whanaketia ngā Aratohu CMRI ki te whakatairanga ake he honohononga mahi hāngai i waenga i te Karauna me te Māori, kotahi o ngā huanga kō te tautoko i te Māori ki te whakatinana i tā rātou ake pūmanawa nohopuku.

## Ture Takutaimoana me te Papamoana:

tohotohu kaupapa here mō te whakawhiti whakaaro, kaupapa here whakawhiti whakaaro, me ngā tika mana tuku iho.

**Pire Whāinga Take Māori** – i tukuna atu ki te Komiti Take Māori a te Pāremata ā-muri i te Pānuitanga Tuatahi i te 27 o Pipiri 2006. Ngā wāhanga whakatika ture kei roto i te Pire Whāinga Take Māori ko Te Ture Whenua Māori 1993, Te Ture o te Tiriti o Waitangi 1975, Te Ture Ika Māori 2004, me te Ture Whakatau Kerēme Ahumoana Ōhanga Māori 2004. **Pire Āpure Moana** – I mahi tahi a Te Puni Kōkiri ki ngā Tari o Te Papa Atawhai me Te Manatū Ture, mō ngā whakaaro ki te whakawhirinaki i te Pire Āpure Moana atu ki te Ture Takutaimoana me te Papamoana 2004.

Tētahi tuhinga whakarārangi i ngā whiringa hei āwhina ki te whakatere i ngā whakaritenga Whakataunga Tiriti i whakaotia.

Mahi haere tonu o te arotake i te Kaitiaki Māori i te whakawhiti kōrero i waenga – pokapū, i waenga i ngā āpiha o Te Puni Kōkiri, Te Tari a te Pirimia me te Komiti Matua Pāremata, Te Komihana o ngā tari Kāwanatanga, me te Tari a te Kaitiaki Māori. I te haere ake ngā mahi ki te tautoko i te whanaketanga ōhanga Māori, te mea nui e pā ana ki ngā whiringa mō tētahi honohononga haere tonu i waenga i te Kaitiaki Māori, a Te Puni Kōkiri, me te Kaitiaki o Poutama. Me te

<sup>2</sup> Ko te whakamāramatanga kua whakaāetia mō te KHKM ko ' tētahi kirimini, whakaritenga kua tuhia, kua hainatia e ngā rōpū e rua, e hanga ana, e whakaāe ana ki tētahi hononga i waenga i ngā Minita, ngā pokapū kāwanatanga, ngā mauri karauna rānei, me tētahi whānau, hapū, iwi, rōpū Māori, me ngā hapori Māori. (CAB Min (04) 25/8).'



haere tonu o ngā mahi ki te whakatautu utu mō tētahi kirimini tuku pūtea ka whakapūmau ka rawaka ngā rawa ki te Kaitiaki Māori hei whakatutuki i ngā mahinga ā-ture me te whakaoti i ngā herenga Karauna i raro i te Tiriti o Waitangi.

Kua hangaia e Te Puni Kōkiri tētahi kaupapa mahi e uhi ana i ngā take katoa kahore anō kia oti, me te whai ki te whakahaere i ngā whakararu ā-moni, e pā ana ki te Tiriti, atu ki te Karauna. Kei roto i te kaupapa mahinga ko ngā papa-mahi e rima ka whāia i te tau 2006/07:

- Hanga me te whakawhiti kōrero mō tētahi kirimini tuku moni;
- Whakahoki i ngā whenua e whakahaere ana e te Kaitiaki Māori, ki ngā kaipupuri pānga (āpiti atu ki te rapu i ngā kaipupuri pānga)
- Arotake i tētahi tikanga tuku itareti mō te auau utu i ngā kaipupuri pānga, mai i te Tahua Moni Pātahi e whakahaumi ana e te Kaitiaki Māori;
- Whakamahi anō i tētahi tikanga whakahaere whai kiko mō te Tahua Moni Whāinga Whānui ; me te
- Rapu i tētahi tūranga tautoko mō te Kaitiaki Māori, e ōrite ana ki te Ara Pumanawa Nohopuku Māori.

Takoha atu ki te whanaketanga o ngā rautaki whakawhiti whakaaro, whakawhiti kōrero, mō ngā Kaupapa Here Kaupapa Mahinga Wai Tauwhiro, me te Moana.

**Whakataetae Tohutoa Ahuwhenua:** e tautoko tonu e Te Puni Kōkiri te hui tuku tohu – Rangahau Ahuwhenua 2006 Hiranga Whare Kau Māori. He huarahi wātea nui tonu ngā hui tuku tohu nei ki te whakanui i te hiranga me te angitu Māori i roto i ngā ahuhenua miraka kau.

**Wai 262:** Ko Te Puni Kōkiri tētahi o ngā pokapū e toru, i ārahi i te whakautu a te Karauna mō te kerēme Otaota, me ngā Kararehe. Ka mau tonu ki Te Puni Kōkiri te mana whakahaere ki te whakatika i ngā taunakitanga Karauna mō te kerēme me te whakapātanga atu ki tēnei pokapū. Tērā kā tū ngā nohanga Taraipiunara hei whakarongo ki ngā taunakitanga Karauna a te Hakihea 2006, a te Kohitātea 2007 rānei, me te whaiwāhi tonu a Te Puni Kōkiri mō tēnei take nui, kia whaiwāhi tonu ngā Minita ki ngā whakataunga mō te kerēme.

# HONOHONONGA ME NGĀ PĀRONGO

## TAITOKERAU

### Kōkiri Whakangungu Mahi-ā-rehe Māori

I te mōhio tonu a Te Puni Kōkiri i te pūmanawa nohopuku a te taiohi Māori ki Te Taitokerau, ka rapaina ētahi kōkiri ki te whakamaha ake i ngā taiohi Māori ki roto i ngā kaupapa whakangungu tauira pia, mahi-ā-rehe, me te ahumahi.

I runga i ēnei whakaaro kua tuku pūtea hanga raukaha a Te Puni Kōkiri atu ki te rautaki hanga whare hou a Te Rūnanga o Te Rarawa. I raro i tēnei rautaki kei te mahi tahi te Rūnanga ki te Kuratini o Te Taitokerau ki te tāpae i tētahi akoranga kore utu, mō te tau kotahi, mahi kāmura mahi-ā-rehe tōmua.

I puta mai tēnei kaupapa mahi i tētahi kōkiri whakangungu mahi-ā-rehe, e whakahaere angitu ana mō te toru tau ki muri. I tēnei wā e toru ngā whare kua hangaia e ngā tauira, i hokona atu ki te tari Hanga Whare o Aotearoa.

E tautoko tonu ana a Te Puni Kōkiri i ngā whāinga wā roa a te kaupapa mahi nei ki te:

- hanga i tētahi tauira mahi whakangungu mahi-ā-rehe (kāmura) ka taea te whakawhiti atu
- tuhi i tētahi pukapuka ako kaupapa here, whakaritenga mō te tauira mahi whakangungu mahi-ā-rehe (kāmura).

## TĀMAKI MAKĀURAU

### Kaiwhakamāori reo-toru Māori

Kua tuatoko a Te Puni Kōkiri i te Hapori Turi Māori mā roto i te haumitanga me te

whanaketanga i te reo rotarota hei mahinga hei painga mō te Hapori Turi Māori.

Te wāhanga tuarua o te whaiwāhitanga a Te Puni Kōkiri, he haumitanga atu ki ngā kaiwhakamāori reo-toru hei whakakaha i te raukaha a te Hapori Turi Māori. Ko ngā mahi tuatahi a ngā kaiwhakamāori ko te whakahaere ki te hanga kaupapa here, huarahi rautaki, tūhonohono, me te whanake mahere ōhanga tauwhiro.

Kua roa tonu a Te Puni Kōkiri e whaiwāhi ana ki te Hapori Turi. I te whakamanatanga i te Ture Reo Ratorato o Aotearoa i te marama o Paenga-whāwhā 2006, ka whakaāetia te reo ratorato hei reo ture mō Aotearoa, ki te taha o te reo Māori, me te reo Ingarīhi, ka whakawhiwhi tāngata kia āhei atu kia whakamahi ki roto i ngā Kooti whakawā Ture.

## WAIKATO

### Haumitanga a Maraeroa C Kaporeihana

Kua hangaia e te Kaporeihana o Maraeroa C ētahi kaupapa, ka tautokona e Te Puni Kōkiri, mā te whakawhiwhinga pārongo, tohutohu, me te hokohoko, i te wā e whanake ana te pakiaka pakihi a te Kaporeihana. I runga i ēnei mahinga kua whaiwāhi a Maraeroa C ki ētahi kaupapa mahinga pakari. Ko ēnei ko te kaupapa mana pupuri whare e whakaāhei ana i ngā kaiwhaipāinga ki te whakawhiti i te āputa moni tāpui mō te kāinga, me te whanaketanga o te pokapū Tāpoi o Pureora.

Te whāinga o tēnei kaupapa tāpoi ko te



takahuri i tētahi whenua, e 25 heketea, wāhanga o te kaporeihana, hei wāhi otaota Maori, ko ētahi ko ngā ngahere Harakeke, ngahere tanekaha; tētahi pārekereke tipu Māori, he wāhi mātakitaki, me tētahi whare rauika.

## TE ARAWA

### Kaupapa Salix o Taupo

I mahi tahi a Te Puni Kōkiri, te Tari Taiao o Waiariki, me ngā kaipupuri whenua Māori, i runga i tētahi kaupapa whāinga rua i titiro ki ngā rawa momo pūngao me te whakaparu pākawa ota i ngā rerenga wai nunui o ngā rohe o Rotorua me Taupo. Ko ngā kaipupuri whenua Māori tonu ngā kaiwhaiwāhi nui.

I raro i te haumitanga a Te Puni Kōkiri, ko te tanu whakamātau o ngā rākau Salix ( rarauhe whiro ) ki runga whenua Māori, 10 heketea te rahi, ki ngā rohe o Rotorua me Taupo, mā ngā mauhere o te whare herehere o Rangipo e tanu i ngā rākau nei.

Nā Te Puni Kōkiri i utu i tētahi kaiwhakarite kaupapa, ki te rangahau me te rapu i ngā huarahi wātea ōhanga mō te rākau nei te Salix. Tetahi, ka tautoko anō a Te Puni Kōkiri i ētahi ake rangahau ki tētahi wāhi whakanao, whakapai ka noho tika ki te tīmata i te hauhaketanga Salix tuatahi a te tau 2008.

### Te whakaheke i a tātou tamariki mai i ngā tiriti

I te whaiwāhi a Te Puni Kōkiri ki tētahi kaupapa whakaora ā-ture ahurei ki Rotorua. Ka whakawhiwhi te kaupapa i tētahi huarahi rerekē mō ngā tauira e whakararu ana kei whakairia, kei panaia rānei. I runga i te angitu o te kaupapa nei, Kaupapa Mahi Ngātahi, kua tuku whānuitia ki te ao whānui.

Kua tuku pūtea a Te Puni Kōkiri mō te kaupapa mō te rua tau. E hāngai atu ana ki ngā taiohi i waenga i te iwa tau me te 13 tau, kia huitahi te tamaiti i hara, me te tangata i haratia, ki tētahi wāhi kūpapa, kia taea te tokorua ki te whiwhi māramatanga hou, ki te whakapai mamae me te whakahoki ki te honohononga.

## TE MOANA Ā TOI

### Tipu ake kia Kakama

He rautaki 50 tau te Tipuranga-Kakama hei whakahaere i te tipuranga ā-mua mō te rohe uru o Waiariki. He rohe tēnei kei te nui ngā hītori Māori, kei te nui anō te taupori Māori, me te whakapūmau a Te Puni Kōkiri ka whaiwāhi tonu ngā iwi me ngā rōpū Māori kāinga ki ngā mahinga whakamahere, mai i te tīmatanga.

I a Te Puni Kōkiri te tūranga pūtake ki te hokohoko i ngā honohononga atu ki ngā Maori me whaiwāhi atu ki tēnei rautaki, ki te tuku pūtea mō tētahi kaitohutohu hei ārahi i te whaiwāhitanga o ngā tāngata whenua ki te whakamahi i te rautaki.

### Kaupapa Hapori o Matatā

Kua whakawhiwhi pūtea a Te Puni Kōkiri mō tētahi Kaiwhakarite whaimana ki te hanga i te Mahere Whakautu Hapori o Matatā. Mā te Mahere e whakapūmau ka noho whakatika te hapori mēnā ka puta ake tētahi mate whawhati ohore.

I runga i ngā mahi angitu a te Kaiwhakarite ki te whakawhāiti i ngā rāngai katoa o te hapori o Matatā, me te hanga i tētahi mahere kua tautokohia e rātou katoa, kua puta he tono ki te takoha hāngai atu ki te Mahere Whakahaere Mate Whawhati Ohore Ā-motu. He wāhanga a Te Puni Kōkiri ināianei o te

Komiti Tohutohu Oranga Mate Whawhati  
Ohorere.

## TAKITIMU

### Kaiahuwhenua Miraka Kau Māori

Kua whakawhiwhi tohutohu a Te Puni Kōkiri ki tēnei rōpū me te āwhina ki te hanga i a rātou hei rōpū kaporeihana. Ko tētahi wāhanga o te rautaki a te Rōpū ko te tautoko i ngā taiohi Māori ki te whai tohungatanga ki te uru atu ki te ahuhenua miraka kau me te whakamahi i ngā whenua Māori kei te rohe tonga o Takitimu. Tētahi, he karahipi kei te wātea kei te Kaupapa Mātauranga mō te Lwi Māori mō ngā kaiahuwhenua taiohi.

Ko tētahi o ngā huanga nui tonu o tēnei kaupapa, ko ngā painga moni kua riro ki ngā mema o te Rōpū Whiriwhiri Kaiahuwhenua Miraka Kau Māori, me te haumi atu ki ngā taiohi Māori e uru ana ki te ahumahi miraka kau.

### Kaupapa o te Hiranga – Te Aute Kāreti

Ko Te Puni Kōkiri te kaiwhakarite matua ināianei, mō te Kaupapa o te Hiranga – Te Aute Kāreti. E arotahi ana tēnei kaupapa ki te whakawhāiti i ngā tauira, te hapori kāinga, me a rātou whānau, ki te whaiwāhi ki te kāreti me ngā tikanga katoa a ngā huarahi mātauranga mō a rātou tamariki. Ki a Te Puni Kōkiri, he kaupapa tauira tino hiranga tēnei, o te hanga i te pūmanawa nohopuku Māori.

Nā Te Puni Kōkiri i whakarite i te haerenga mai o Te Tāhuhu o te Mātauranga me te Komihana Mātauranga Kuratini ki te kaupapa me ngā wawata mā tēnei whaiwāhitanga e hanga i tētahi tauira, i runga i ngā kaupapa hiranga, ka tukuna atu ki ētahi ake kura kei te rohe o Takitimu.

### Whakahau Tūkino Wātea ki Wairarapa (TWW)

Ko Wairarapa anake te rohe i roto o Te Whanganui-ā-Tara, kua heke iho te auau tukino whānau. Ki ngā pirihihana, te take kua pēnei nā te mahinga angitu o te kaupapa kakama Tūkino Wātea ki Wairarapa, nā Te Puni Kōkiri te pūtea, kei roto i te tau tuatoru o tēnei kaupapa toru tau.

I raro i ngā āwhina pūtea a Te Puni Kōkiri ka whakatūria e TWW tētahi tohunga hapori hei Kaitātaki ā Rohe (KAR). Ko te KAR te hoto i waenga i ngā momo pokapū i te whaiwāhi ki te ārai tūkino whānau, ki te whakarite me te hoko honohononga i waenga i ngā pokapū take nui me ngā rōpū, ki te whakatutuki i te Tūkino Wātea ki Wairarapa.

## TE TAIRĀWHITI

### Te Lwi o Rākaipaaka

I roto i te rohe o Nūhaka, i te titiro te Kaporeihana o Te Lwi o Rākaipaaka ki ngā whanaketanga ka hanga tūranga mahi me te tipuranga pakihiki i roto i te tāpoi, me te whanaketanga whenua Māori.

Kua whakawhiwhi tautoko whakahaumi a Te Puni Kōkiri, me te pūtea mō te whakamahere rautaki, whakahaere pakari, ngā mahinga pai, me te hanga raukaha. Te mea nui o te haumitanga a Te Puni Kōkiri kua kaha tēnei hapori ki te rapu me te hanga atu ki runga i ngā mea pakari, kia tutuki ngā hiahia hapori, kia angitu ngā rōpū pakihiki.

I te taha o te Mahere Rautaki, kua hangaia e te Kaporeihana o Te Lwi o Rākaipaaka tētahi Mahere Whakahaere Rawa. Ko tēnei kaupapa ka ārahi te kaupapa Nūhaka Kāinga – Toiwhenua, - tētahi mahi whakamātau



e hāngai ana ki te whakaoranga kaiao o te kāinga o Nūhaka me te marae kei reira..

#### **Kaitiaki Āwhina o Ngai Tamanuhiri**

Kua whakahaumi a Te Puni Kōkiri ki te Kaitiaki Āwhina o Ngai Tamanuhiri, hei tautoko i āna mahere rautaki, te hanga raukaha, me tētahi mahinga whakahōkai, whakaputa, motuhake. I arotahi tēnei mahinga ki te hanga papa ōhanga mai i ngā whakataunga Tiriti, me ngā tikanga a te Ture Ika Māori 2004.

I runga i te angitu o tēnei haumitanga ka taea e te Rōpū Kaitiaki te rangahau i ngā rawa iwi kia hangaia he papa tauwhiro mō ngā reanga kei mua.

Hei tauira, kei a Ngai Tamanuhiri te takutaimoana tino roa o ngā iwi e toru o Tūranganui-ā-Kiwa, kei te tahamoana o te Tairāwhiti, nā konei ka whai te Rōpū Kaitiaki ki te titiro ki ngā tikanga pakari o tētahi pakihi Whakahaere Ahumoana. Heoi, i runga i ngā kitenga o tētahi rōpū rangahau, nā Te Puni Kōkiri te pūtea whakahaere, - kahore i te pai ngā āhuarangi ināianei mō te whanake pāmu ahumoana.

I runga i ngā tautokohanga a Te Puni Kōkiri, i taea te rōpū Kaitiaki te whakamahi rangahau ine nui ki te titiro ki ngā huarahi ki te whakawhiwhi mahi ki roto i te hapori me ngā reanga kei mua.

#### **Rorohiko ki roto i ngā Kāinga**

Kei te piripono a Te Puni Kōkiri ki tētahi mahi kakama ki te whakatenatena i ngā whānau kei ngā kura ōhanga iti, ki te pupuri rorohiko me te ako tikanga hangarau. I raro i tēnei kaupapa ka pakari ake te whānau katoa ka ngāwari ake

ngā huarahi ki ngā akoranga ake.

Ko te Kura Tuatahi o Wairoa kei te ārahi i te huarahi mō ngā "Rorohiko ki roto i ngā Kāinga" ki te Tairāwhiti. Me te whāinga o tēnei kaupapa kia āhei ngā whānau kei ngā kura ōhanga iti ki te pupuri i ngā rorohiko kua takoha mai, hei āwhina i ngā mātua ki te ako whakahaere rorohiko kia taea e rātou te whaiwāhi ki ngā akoranga a ngā tamariki.

Kua āwhina a Te Puni Kōkiri ki te whakatū i te Kohinga o ngā Kura o Wairoa mā ngā hokohoko honohononga, te whakamanawa i ngā whānau ki te whakapiri ki te kaupapa me te tautoko i ngā kura ake e rua, ki te hono mai ki tēnei kaupapa kakama.

## **TE WHANGANUI Ā TARA**

### **Kaitiaki Whanake Hapori o Hongoeka**

Kua tuku moni a Te Puni Kōkiri ki te Kaitiaki Whanake Hapori o Hongoeka, kei Plimmerton, Te Whanganui Ā Tara. I raro i tēnei haumitanga ka taea te Rōpū Kaitiaki te arotake me te whakarautaki i te whanaketanga ōhanga mō te poraka whenua Māori katoa o Hongoeka, āpiti atu ki te:

- Arotake i te pūmanawa nohopuku o ngā tāngata katoa ka whakapapa atu ki tēnei poraka whenua;
- Rangahau i te whanaketanga pūmanawa nohopuku o te whenua wātea me te moana e pōkai ana;
- Rangahau ki te taha o NIWA mō tētahi kaupapa ahumoana papa whenua;
- Whanake i te tauwhiro tangata me te whaihuatanga o tēnei hapori- pakupaku;
- Tautoko i te oranga mā te whakawhiwhi i tētahi papa ōhanga ōrite.

## TE WAIPOUNAMU

### Kaitiaki a Te Roopu o Tane Mahuta

Mō ngā taiohi Māori kei raro i te 17 tau,  
e whakararu ana kei taka ki te kore mahi  
mō te wā roa, ināianei kei te haere rātou ki  
ngā akoranga mō te whanaketanga mahi,  
whanaketanga tāpoi me te kaiārahitanga, i  
runga i ngā āwhinatanga a Te Puni Kōkiri.

Nā Te Puni Kōkiri te pūtea mō tēnei kaupapa  
whakangungu tohungatanga a tētahi Kaitiaki  
e whakahāngai ana ki ngā taiohi kei raro i te  
17 tau, kahore he tohu mātauranga, kahore  
hoki i te tango penihana tautoko.

### Rāhui Māori o Kaiapoi

Nā Te Puni Kōkiri i whakarite tētahi kaupapa  
rangahau, whakawhiti kōrero angitu ki ngā  
kaipupuri whenua ki te hanga mahere mō te  
whanaketanga o te poraka whenua hei painga  
mō ngā kaipupuri whenua kāinga.

A tōna mutunga hei te whanaketanga o te  
whenua ka hoki te mana whakahaere ki ngā  
kaipupuri whenua Māori, ka whakahaeretia he  
rangahau kaiao, ka tautuhi, ka whanake i ngā  
puna wai, ngā wāhi tapu, me ngā take tuku  
rawa.

