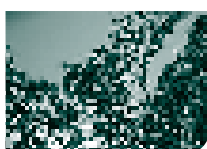
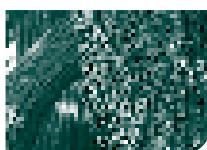
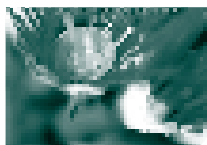


# WHĀRANGI TAKE



2 Kupu Whakataki - Minita Mana Whakahaere

4 Kupu Whakataki - Manahautu

## WĀHANGA TAHI – KO WAI MĀTOU

8 Te Puni Kōkiri – (1992-2007)

9 Pārongo Whakahaere

## WĀHANGA RUA – HE AHA A MĀTOU MAHI

12 Aromatawai Taiao

16 Te Pou Tarāwaho Kaupapa Here a Te Puni Kōkiri

18 Pou Tarāwaho Huanga

20 Tuakiri Ā-motu

26 Ngā Whānau – Taiohi me ngā Pakeke

31 Hurihanga Ōhanga

36 Whakarāpopototanga o ngā Tohu

## WĀHANGA TORU – KA PĒWHEA MĀTOU MAHI AI

38 Whakamau Tirohanga Whānui ki ngā Kaupapa Here Kāwanatanga

41 Whakaine Hāngaitanga

43 Hauora Whakaritenga

48 Whāinga Whanaketanga mō ngā Tari Kāwanatanga

51 Ngā Whakararu Rautaki a Te Puni Kōkiri



## KUPU WHAKATAKI MINITA MANA WHAKAHAERE

2

Ka tau mai ki a tātou te hunga e whaiwāhi ana ki tēnei pūrongo, tēnei te mihi nui ki a koutou.

He whenua pakari ake, pai ake, ngākau titikaha ake a Aotearoa i ēnei rā, kei runga ake i ngā tau tokomaha ki muri. He maha ake ngā tāngata kei te whiwhi mahi, kei runga ake ngā whiwhinga moni, e piki ake ana ngā whakatutukitanga tohu mātauranga, me te heke iho o ngā auau taihara. Kia oti ai te mahi ki te hanga i tētahi ōhanga, hapori, taiao, tuakiri ā-motu, me mahi whakarautaki, kaha ake te kāwanatanga ki ngā kaiwhaiwāhi take nui - e kore e tutuki tēnei i a aituā noaiho. He mārama pai ana te wā kei mua, engari me hanga ake e tātou ki runga i ngā pou e whā, o te hāpaitanga.

I runga i te hapori whānui, kua kitea e ngā tutukitanga a te Māori hei tangata whenua me whakamana i tā tātou tūranga hei hoa ngātahi ahurei, wāriu nui tonu, i roto i te ōhanga o Aotearoa, me te whanake i tētahi āhua o te motu whānui. Kei te kaha ake a ngai Māori e angitu ana hei Māori. Kei te tipu ake tā tātou taupori Māori, kei te taiohi, he maha ake tātou kei te whaiwāhi atu ki ngā akoranga kura wānanga, kua tīmata te whakaoranga o tā tātou reo, me te tipu tōrunga o te ōhanga Māori mā roto i a tātou papa taonga e whaihua ana. He wā harikoa rawa atu tēnei mō te whanaketanga ōhanga me te hapori Māori, otirā, mō ngā whānau me ngā tāngata ngātahi Māori.

Engari, he nui ngā mahi hei mahinga, kia taea e te Māori te whakatinana i a rātou pūmanawa nohopuku. E kore e taea e tātou te hanga i tētahi ōhanga pakari i runga i te

hapori kahore i te tautokohia ki te whakanui i a rātou pūmanawa nohopuku. Anō, e kore e taea e tātou te hanga i tētahi hapori pakari ki runga i te ōhanga kahore i te hanga painga moni hei tautoko i te huarahi wātea me te noho pūmau o a tātou tāngata, te tiaki i tā tātou taiao, me te whanake i a tātou tikanga. Ko ngā tohu hei tautoko i te ōhanga wāriu teitei, wairua auaha, ko te hapori matatau, whai pukenga, hauora, pupuri whare pai, me te taituarā, ka whakamau i te manawanui ki te hopu huarahi wātea, me te whakahaere whakararu. Kei te whakamau tohu mātauranga kaha ake, pukenga kaha ake te Māori. Ko taku hiahia kia tere ake tēnei ahunga whakamua kia wātea mai ai ngā huarahi tino pai ki a rātou mō ake tonu.

Te mātaki i te Māori e hiki ana i a rātou manako me ērā o ā rātou whānau i roto i tēnei wāhi, koia nei tētahi huanga tuari mō te Kāwanatanga, mō ngā tāngata ngātahi, mō whānau, mō hapū, me iwi rātou ake. Mā te hanga ki runga i te haere ināiane o te angitu, me te mahi ki roto i te āhua whakapiri, arotahi, rautaki, ka tutuki tēnei rerekētanga. Ko taku arotahi he whakapūmau ka puta angitu te Māori i roto i tēnei ao hurihuri engari kia kore e whakawaimeha tā tātou āhua ahurei.

E whakahāngai atu ana tēnei Pānui Whāinga ki ngā take tuatahi, e toru, a te Kāwanatanga, arā, te tautoko i ngā whānau, te hanga ā-motutanga, me te whakatipu i tētahi ōhanga tauwhiro. Mā ngā mahinga ngātahi, ka taea e

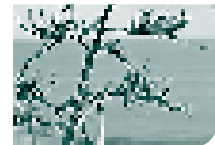
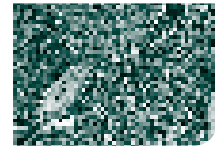
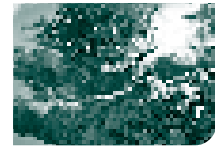
tātou te hanga i tētahi hapori, kei roto a ngai Māori e pupuri wāhanga nui tonu ana, ki te taha o ngā tāngata katoa o Aotearoa.

Noho ora mai rā ki ō tātou marae kāinga me ngā wāhi katoa, i ngā manaakitanga a tātou ki a tātou.

*Hainatanga*



*Hon. Parekura Horomia  
Minita mō ngā Take Māori*





## KUPU WHAKATAKI MANAHAUTU

4

Tēnei ahau, me aku kaimahi o Te Puni Kōkiri, e mihi nei ki te hunga kua huri ki tua o paerau, me koutou ngā kanohi ora o rātou mā, tēnā koutou katoa.

Ko Te Puni Kōkiri te kaitohutohu mātua a te Kāwanatanga mō ngā honohononga Karauna-Māori. Ka ārahi anō mātou i ngā kaupapa here tūmatanui Māori ki te tohutohu i te Kāwanatanga mō ngā kaupapa here e pā ana ki te oranga me te whanaketanga o te Māori.

He tūranga ahurei tā Te Puni Kōkiri ki te whakahaere i ēnei mahi mā te whakawhiwhi tohutohu kaupapa here kounga kairangi, aromatawai hāngai, me te hanga i te whakaū honohononga pakari.

I ngā wā tata nei, i te arotahi atu a Te Puni Kōkiri ki te whakamahinga i tētahi pou tarāwaho kaupapa here Māori hou – te Ara Pūmanawa Nohopuku Māori. I roto i te kupu ngāwari, ko tēnei te ara e pā ana ki te Māori e angitu ana hei Māori.

Ko te whakahāngai mutunga a te Ara Pūmanawa Nohopuku Māori, ko te whakatū pai ake i te Māori ki te hanga me te whaihua mai i a rātou rawa tōpū, ngā mātauranga, ngā pukenga me te raukaha kaiārahitanga hei whakapai ake i tā rātou kounga oranga whānui.

I raro i ngā ārahitanga a ngā take tuatahi Kāwanatanga, me te Ara Pūmanawa Nohopuku Māori, kua tohungia e Te Puni Kōkiri ngā wāhi uho e toru mō te whakahaumi rautaki:

- Te whakapakari i te kaiārahitanga me te hanga-whakataunga (Whakamana);
- Te hanga i te mātauranga me ngā pukenga (Mātauranga); me

- Te whanaketanga me te whakamahinga o ngā rawa (Rawa).

He mea pai te mōhio ki ngā whakautu, mai i ngā hui kaiwhaiwāhi, me ngā hui tono whaikōrero, he wāhanga nui tonu, puta noa ki Aotearoa, ko te whānuitanga o rātou o Aotearoa, me te ao Māori, kei te mauminamina kaha atu ki te Ara Pūmanawa Nohopuku Māori.

E pono ana mātou, ko te take mō tēnei whakautu tōrunga, ko te mea kei te Ara Pūmanawa Nohopuku Māori tētahi whāinga ngāwari, engari he whāinga hohonu, kounga oranga pai ake mō te Māori, koia nei ka whakatairanga te angitu Māori ki roto i te horopaki Māori, i runga hoki i ngā whakaritenga Māori.

Ko tēnei Pānui Whāinga e whakamārama ana i tā matou ara haere, me ngā take tuatahi mō ngā tau kei mua, i a mātou e whakapau kaha ana mō tēnei whāinga. Ko tā mātou māiatanga ki te whakapā hāngai atu ki ngā wā kei mua, kei te whai i a mātou whakaaro pai, arā, ko a mātou mahi ka whakanao hua tōrunga, ka taea te whakaine, mō te Māori, ka tautoko i te hiahia a te Kāwanatanga ki te hanga i tētahi ōhanga pakari, ka kawe i te oranga kairangi e hāngai ana ki te tautoko i ngā whānau katoa o Aotearoa.

Ko te whakamāramatanga o ngā kupu Te Puni Kōkiri, ko tētahi rōpū e ahu whakamua ngātahi ana. I runga i ngā tohu o tēnei ingoa, ka whai

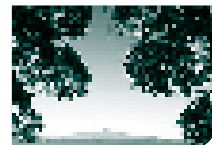
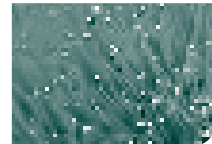
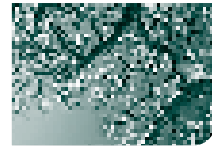
mātou ki te whakamahi i ngā pūmanawa tōpū a ngai Māori, ki te hanga i tētahi Aotearoa pakari ake.

He whakamoemiti ki te Atua, nāna nei ngā mea katoa.

*Hainatanga*



*Leith Comer  
Manahautu*





# 1. KO WAI MĀTOU



# TE PUNI KŌKIRI – (1992-2007)

8

I whakatūria a Te Puni Kōkiri, tuatahi hei Manatū kaupapa here, i te 1 o Kohi-tātea 1992. Ko āna mahi whānui, kua whakawhiwhia i roto i te Ture Manatū mō te Whanaketanga Māori, 1991, ko;

- Te whakatairanga i te pikinga o ngā taumata whakatutukitanga a te Māori e pā ana ki te mātauranga, te whakangungu me te rapu mahi, te hauora, me te whanaketanga rawa ōhanga; me
- Te aromatawai me te takawaenga ki ia tari me ia pokapū e whakawhiwhi ana, e whai mana whakahaere ana rānei ki te whakawhiwhi ratonga atu ki, atu mō te Māori rānei, mō te take ki te whakapūmau i te hāngaitanga o aua ratonga.

Ko Te Puni Kōkiri te pokapū kair\_whi ki te Manatū Māori, o mua, koia anō te Manatū kaupapa here, me Te Tira Ahu Iwi, i te whakahaere i te tuku whakawhiti i ngā kaupapa mahi, me ngā ratonga i te tuku e te Tari o ngā Take Māori, o mua.

I waenga i tōna tekau mā rima tau e whakahaere ana, kua āta huri haere te tūranga mahi a te Manatū. I t\_mata ki te whakawhiwhi whakaaro mana kōwhiri ki te whakapūmau i whaiwāhi ngā whaipānga Māori ki ngā whakaritenga kaupapa here Kāwanatanga, te whakarite huarahi atu ki ngā ratonga r\_roa, me te aromatawai i ngā mahinga a te rāngai kāwanatanga e pā ana ki te Māori. Ka whakawhānuitia ēnei ratonga atu ki te tuku pūtea hāngai atu, me te whakahaumi atu ki ngā hapori Māori me ngā rōpū, me te arotahi

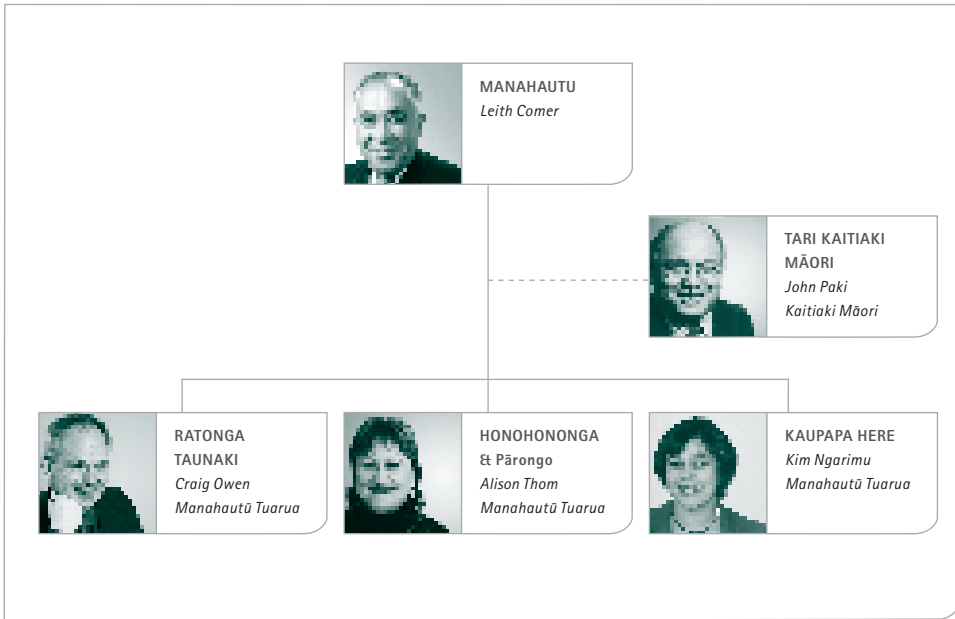
kaha ake ki te kounga o te honohononga a te Karauna me te Māori.

Mai i te tau 2004, ko te huarahi rautaki a Te Puni Kōkiri, me ngā mahinga e pā tata ana, i te arotahi atu ki 'ngai Māori e angitu ana hei Māori'. E whakamōhio ana tēnei huanga manako, i te take whakahira, o te Māori e eke ana ki ngā taumata angitu tauwhiro me whakatutuki i tēnei i runga i te kākahu tikanga ki te tū hei Māori. Ka tautokona tēnei āhuatanga huanga manako e te Ara Pūmanawa Nohopuku Māori, tēnei kei roto i te pou tarāwaho kaupapa here a te Manatū, hei papanga mō āna mahinga katoa.

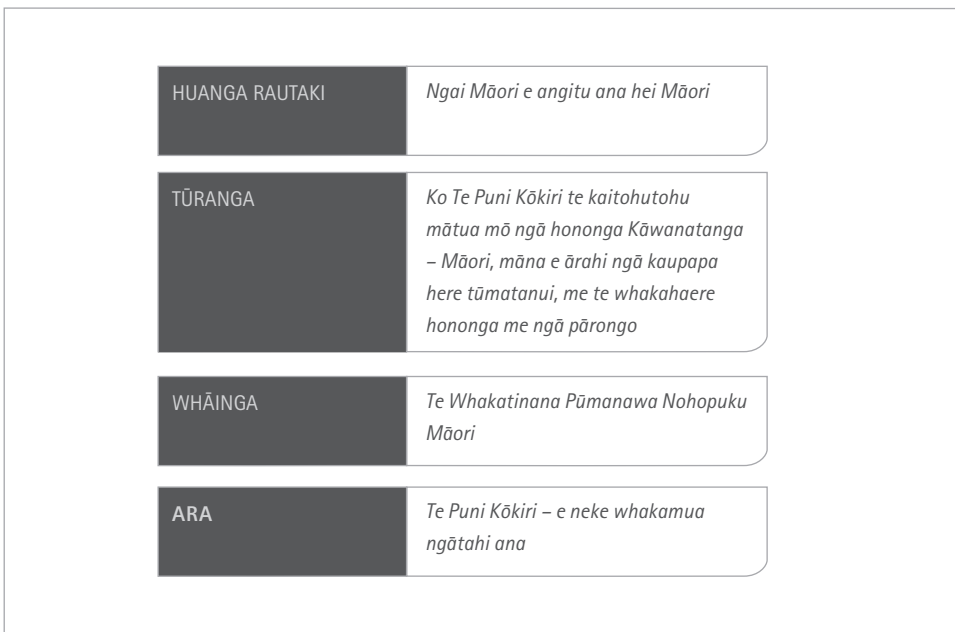
I te tau 2007, e tū ana a Te Puni Kōkiri hei pokapū whakakotahi, e tuku tohutohu kaupapa here kounga kairangi ana, ngā whakahaumitanga rautaki e aro ana ki te whakatinanatanga pūmanawa nohopuku Māori, me te whakahaere honohononga me ngā pārongo hei tautoko tōrunga i te honohononga kāwanatanga atu ki te Māori.



## ■ PĀRONGO WHAKAHAERE



## ■ PĀRONGO WHAKAHAERE



## ■ ANGA WHAKAHAERE – WĀHANGA ITI

HUANGA RAUTAKI  
*Ngai Māori e angitu  
ana hei Māori*

Kei te hāngai tonu ngā mahinga a Te Puni Kōkiri ki tōnā Huanga Rautaki, Ngai Māori e angitu ana hei Māori, e whakamōhio ana i te whakahirahiratanga o te Māori, e whakatutuki taumata taupua angitu ana, ēngari e kore e waimehatia te tū hei Māori. E tāpiri ana ki te Māori e angitu ana hei Māori, ko:

- te Māori e whiwhi painga ana mai i a rātou hua ohu hei painga ohanga;
- te Māori e whakamahi ana i a rātou pukenga, mātauranga, me ngā pūmanawa mō te wairua auaha nui ake;
- he tikanga Māori me te tuakiri Māori e kakapa ana;
- ngā whānau Māori kei te pakari, hauora, me te honohono; me
- ngā whakahoahoa painga whakaaro tahi i waenga i te Māori me ngā kaiwhaiwāhi o te kāinga, o te motu, o te ao.

TŪRANGA KUA TAUTUHIA:  
*Ko Te Puni Kōkiri te  
kaitohutohu mātua mō ngā  
hononga Kāwanatanga  
– Māori, mā roto i te  
ārahi i ngā Kaupapa Here  
Tūmatanui Māori, me te  
whakahaere Hononga me  
ngā Pārongo*

Hei pokapū kāwanatanga e arotahi motuhake ana ki te Māori, kei roto a Te Puni Kōkiri i tētahi tūranga ahurei ki te whakawhiwhi kaiārahitanga me ngā tautoko ki āna kaiwhaiwāhi. Ka oti tēnei mā te ārahi, me te tautoko i te kāwanatanga i roto i ngā tohutohu kaupapa here kairangi, ngā aroturuki hāngai, me te hanga, te whakaū honohono tino kaha.

WHĀINGA  
*Te Whakatīnana  
Pūmanawa Nohopuku  
Māori*

He nui rawa atu te pūmanawa nohopuku kei roto i te taupori Māori e tipu ake ana me te papa hua Māori. Ko te whāinga a Te Puni Kōkiri he āwhina ki te huaki me te whakatīnana i tēnei pūmanawa nohopuku kia angitu ai te Māori hei Māori.

Hei whakatutuki i tēnei whāinga, kua hangaia e Te Puni Kōkiri te Ara Pūmanawa Nohopuku Māori; tētahi kaupapa here wairua auaha, titiro whakamua, ka arotahi atu ki te whakapai ake te tūranga o te Māori ki te hanga me te whiwhi painga mai i te pūmanawa nohopuku o a rātou rawa ohu, ngā mātauranga, ngā pukenga me ngā raukaha kaiārahitanga, ki te whakapai ake i tā rātou kairangi oranga whānui.

ARA  
*Te Puni Kōkiri – E Ahu  
Whakamua Ngātahi Ana*

E whakamōhio ana te ara a Te Puni Kōkiri, e ahu whakamua ngātahi ana, i te hiahia ki te mahi ngātahi, ki te piriponotanga, me te arotahi hei rōpū whakaroto, kia mahi tahi ki ngā kaiwhaiwāhi whakawaho, āpiti atu ko ngā pokapū rāngai kāwanatanga, ngā whānau, hapū, iwi, rōpū me ngā haporī Māori, ngā rōpū pakihi, o te motu, o te ao, me ētahi atu rōpū.

## 2. HE AHA A MĀTOU MAHI



# AROMATAWAI TAIAO

12

Ko ngā whakaritenga kei roto nei a Te Puni Kōkiri e mahi ana, e whakamanatia ana e ētahi kaupapa whakahaere take nui. I te taha o te tirohanga whānui te āhua hanga o te Māori i roto i te hapori o Aotearoa, ka taea te wehewehe i ēnei i runga tūranga o, me ngā huarahi wātea me ngā wero mō te Māori, e takoto ana ki roto i ngā taiao tikanga, hapori, me ngā ōhanga.

## TE MĀORI I ROTO I TE HAPORI O AOTEAROA

I roto i te Tataunga Iwi o 2006, e 565,329 te taupori Māori. Koia nei te māngaitanga, kotahi o ia tokowhitu, 14.6% rānei, o te taupori whānui o Aotearoa. Maha tonu te Māori e noho taone ana (84%, e 24% o ngā Māori katoa e noho ana ki Tāmaki. I tua atu, e 72,954 ngā Māori e noho ana ki Poihākena.

Ahakoā te nui haere o te taupori o Aotearoa kei te pakeke (te tau waenga pakeketanga, 35.9 tau), i te whānuitanga, kei te taiohi iho te taupori Māori, (te tau waenga pakeketanga,

22.7 tau). I tua atu, kei te tere ake te tipu a te taupori Māori, ki tā te taupori tauwiwi. He mea tino whakahirahira tonu ngā rōpū honohono ki te Māori: me te whakamana o ngā rangahau inātata nei, ko te whānau tonu te wae uho o te hapori Māori, me te kawenga take nui mō te whakawhiti mātauranga waenga reanga, me ngā āhua tikanga. i te taha o ētahi ake rōpū honohono, ko ngā whānau ngā waka hei whakahau i ngā tuakiri me te whai atu i ngā huarahi wātea whanaketanga.

Ko ēnei ia tatauranga e whakaputa ana i te mea whakahirahira ki te whakahaumi atu ki te whakatinana pūmanawa nohopuku Māori ināiane he whakapūmau kia tauwhiro ngā wā kei mua.

## WHANAKETANGA TIKANGA MĀORI

Ko te tikanga Māori he mea ahurei, he taonga, he wāhanga uara nui tonu o ngā tikanga o Aotearoa. E tāpiri ana ki ngā mahi tikanga angitu i tēnei wā, ko;

- He maha ngā wā e whakamahia ana te tikanga Māori hei whakanui i Aotearoa ki te ao, ā ko taua mahinga he whaikiko, he tōtika, he mea hanga whakahihī;
- Kua nui haere ngā whakamahinga i ngā kupu me ngā kianga Māori ki Aotearoa whānui, te mea nui e whakaata ana ki roto i te rāngai pāho;
- Āhua 1000 ngā marae kei Aotearoa, koia nei tonu ngā wāhi aro atu mō ngā hapori Māori;
- I runga i te Tataunga Iwi, 2006, kua tino kaha ngā mōhiotanga e pā ana ki ngā

honohonotanga iwi (e 84% o te Māori e mōhio ana ki a rātou iwi). Me te maha ake o ngā huarahi atu ki ngā pārongo mō te whakapapa me ngā iwi kei runga i te ipurangi, me ngā ratonga pērā i Tūhono.

- Ko te kapa haka te mea kaingākau o ngā mahi Toi Māori, i runga i te whaiwāhitanga me ngā kaimātaki, me te mea i raro i ngā wānanga kua tū tētahi rōpū kaikaranga me ngā kaiwhakairo, me ētahi ake kaimahi tohunga. Kei tipu haere ngā āhuetanga hokohoko mō ngā mahi toi Māori o ināianei, ā, ko te whaiwāhitanga o te Māori ki roto hākinakina tētahi kaitakoha whakahirahira ki ngā honohononga tikanga me ngā huanga hapori.
- Ahua 24% o te taupori Māori e taea te kōrero Māori, e 10% o rātou e rite tonu te whakamahi i a rātou pukanga Māori. Kua puta tētahi nekehanga nui tonu o te kōtaha pakeketanga o te taupori kōrero Māori, mai i tētahi taupori tino taipakeke ki te reanga hou, tāngata taiohi e pupuri pukenga taumata teitei mō te reo; me
- Te 93% o te Māori kua whai whakaaro tōrunga atu ki te reo Māori, me te 70% e whakaae ana ki te tuari me te whanake i ngā mātauranga mō te reo Māori me ngā tikanga ki ngā tāngata katoa o Aotearoa. E 23% i runga atu kei te whakaohoho kaha ki te ako i te reo Māori, me te whaiwāhi atu ki ngā mahinga tikanga, engari e kitea ana i tēnei he rāhui tapu mō te Māori anake.

Ko te wero mō te ahu whakamua, ko:

- Te whakaū me te whakatipu i te āinga o

te whakaoranga o te reo Māori me ngā tikanga;

- Te mōhio ki te “whakataonotanga” o te taupori Māori, me te honohono i te Māori ki a rātou me a rātou iwi, i roto i te hapori e huri kaha ana ki te ao;
- Te whakahaere i te whaiwāhitanga i waenga i te tūranga a te Māori hei kaitiaki mō ngā tikanga Māori, me tōnā wāhi mahinga i roto i te hapori o Aotearoa; me
- Te tautoko i ngā tohunga toi Māori ki te whakanui ake i a rātou moni whiwhi me te tiaki i te ngākau pono o a rātou mahinga toi.

Kua hangaia e Te Puni Kōkiri tētahi papa kaupapa here, mahinga, hei tautoko i te Māori ki te whakatutuki i aua wero.

## WHANAKETANGA HAPORI MĀORI

Āhua maha tonu ngā tutukitanga i roto i te whanaketanga hapori Māori i ngā tau te kau ki muri. Ko ngā kaupapa angitu ko:

- Te pikinga o te whiwhinga moni tau waenga o te Māori kei roto i ngā rōpū mahi;
- Te hekenga o te kore mahi Māori ki te 7.2% mō te hauwhā ki Hakihea 2006;
- Ngā taumata runga rawa atu o te Māori e whaiwahi ana ki roto i ngā akoranga whare wānanga whai tikanga;
- Te pikinga o te whaiwāhitanga o te Māori ki roto i ngā akoranga kōhungahunga o ngā taurira kura tau tuatahi (mai i te 85% i te tau 2001, ki te 90% i te tau 2005);
- Kua heke te maha o te Māori e tango penihana kore mahi ana, mai i te 41,651 i



Mahuru 1999, ki te 9,902 i Poutū-te rangi 2007, e 64% te hekenga;

- Kei te piki haere te maha o ngā kaiako kōhungahunga Māori kua rēhitatia;
- E pai haere ana ngā tatauranga hauora Māori;
- Tokomaha ngā kaupapa mahi me ngā kōkiri e tū ana mō te whakapai i te kounga o ngā whare Māori, me te maha o ngā kaupupuri whare Māori.

Ko ēnei kaupapa angitu hei papa mō te whanaketanga Māori tōrunga, mō ngā tau rua tekau kei mua. Engari, kei konei tonu etahi wero motuhake hei āta whakaaro mā tātou:

- 48% o ngā taitama Māori i mahue i ngā kura, kahore i whiwhi i te NCEA Taumata 1, i te tau 2005;
- Ko te Māori tonu e whakamāngai nui tonu ki roto i te rāngai ture;
- Kua piki kaha tonu te wāhanga Māori kei te noho ki roto i ngā whare rīhi. Anō, kua heke te wāhanga Māori kei te noho ki roto i a rātou ake whare, me ngā mōkete; me

## WHANAKETANGA ŌHANGA MĀORI

Kua kōtuituitia te Māori ki roto i ngā taumata katoa o ngā kaupapa ōhanga o Aotearoa.

Mai i te hui taumata ōhanga Māori i te tau 1984, kua whakamaua e te Māori tā rātou ake whārangi whanaketanga ōhanga.

Ko ngā kaupapa angitu i tēnei wā, ko;

- I te tau 2001, e 1.4% te pupuritanga a te Māori; ngā kaupapa ōhanga o Aotearoa. (GDP);
- Kua whakawhitia ki te mana whakahaere o te Māori, āhua \$750M he taonga whakataunga whakamutunga motuhake mō ngā kerēme Māori ki ngā kaupapa hī ika arumoni;
- E 41 ngā iwi kua whai mana, kua tohatohatia

ngā taonga whakataunga ika Māori ki a rātou, neke atu ki te \$350m te wāriu;

- Neke atu i te \$300m te wāriu o te ahumahi ahumoana;
- Kei te kaha ake ngā kaupupuri whenua Ngahere Māori ki te whakamahi i ngā hangarau me ngā pukenga pakihiki ki te hanga umanga ngahere hou;
- Kei te pakari ngā pukenga rakahinonga Māori;
- I waenga i te 5 tau e 5919 ngā rōpū kua āwhinatia e te Ratonga Whakarite Pakihiki Māori; me
- Te piki tere o te maha o ngā Māori kei Aotearoa.

Ko ngā wero kei mua, ko;

- Te whakatū i te Māori kia taea te whaihua mai i ngā huarahi wātea ka puta mai ki roto i te ōhanga wairua auaha, me ngā huarahi wātea ka tukuna mai e ngā kaiwhakahaere ōhanga o te ao;
- Te wāhanga o te Māori e nui haere ana, me te whānui haere ake o te papa mahinga ōhanga Māori;
- Te whakapūmau kia kaha ake te whaiwāhitanga a te Māori, kia kaha tonu ki roto i te ōhanga mātauranga mā te whaiwāhitanga kaha ake me te whakahaumi atu ki ngā ahumahi pērā i te pūtaiao, te rangahau, ngā whakanaonga kiriata, me te pouaka;
- Te hanga atu ki runga i te mahinga pai ake me te whakatau tika pakari ake ki roto i te taiao pakihiki; me
- Te whakapai ake i te papa tohu mātauranga me te whakawhiwhi mahi e pā tata ana mō te taupori Māori.
- Te whakanui i ngā painga e puta ana ki ngā kaupupuri o ngā taonga Māori tōpu;
- To whakapakari i te whaiwāhitanga Māori ki roto i te ahumahi ahumoana.

Ko tēnei āhuratanga taiao, me ngā take tuatahi ka whakatakoto e te kāwanatanga, ka whakawhiwhi i te whakaritenga mō te pou tarāwaho hāngai ake o ngā huanga kua whanaketia e te Manatū hei takoha atu ki *ngai Māori e angitu ana hei Māori*. Ko ngā whanaketanga o aua pānui huanga, me ngā mahinga a te Manatū ki te whakatutuki, ka tau ki raro i ngā whakahaere a te Ara Pūmanawa Nohopuku Māori.



# TE POU TĀRAWAHO KAUPAPA HERE A TE PUNI KŌKIRI



Ko te Ara Pūmanawa Nohopuku Māori ka whakawhiwhi i tētahi pou tarāwaho whakahaere, me tētahi kaupapa ārahi hei whakatutuki i tāna huanga rautaki o *ngai Māori e angitu ana hei Māori*. He ara titiro whakamua, wairua auaha, ka whai ki te whakaterere ake i te Māori kia wehe mai i te whakawhirinakitanga waenga reanga, atu ki te tū hei kaitakoha mahinga tino pai ki te ōhanga me te hapori o Aotearoa.

Ko te Ara Pūmanawa Nohopuku Māori ka whakakoi i te arotahi kaupapa here mō ngā tangata Māori ko rātou hei kākano take nui ki te whakatutuki kounga oranga tino pai mō rātou, mō a rātou whānau, me a rātou hapori ake e whaipānga ana. E tautoko ana kei te Māori te raukaha, te kakama, me ngā hiahia, ki te hanga kōwhiringa mō rātou ake, me te rapu huarahi wātea mō te Māori ki te kōwhiri i ngā mea e tautoko ana i tā rātou tuakiri tikanga, me te takoha atu ki te kairangi oranga tino pai rawa atu.

Ko te whāinga mutunga a te Ara Pūmanawa Nohopuku Māori, ko te whakatū pai ake i

te Māori ki te hanga, me te tango painga, mai i a rātou rawa ohu, mātauranga ohu, pukenga ohu, me te raukaha kaiārahitanga hei whakapai ake i tā rātou kairangi oranga whānui.

Ka mahi tahi ngā Mātāpono me te Pou Tarāwaho Arataki Pūmanawa Nohopuku ki te whakawhiwhi mō tētahi ara purotu, whakaritenga, ki te kaupapa Take Māori me ngā kaupapa here tūmatanui Māori.

## MĀTĀPONO ARATAKI PŪMANAWA NOHOPUKU MĀORI

E whai ana ngā Mātāpono Arataki Pūmanawa Nohopuku Māori ki te arataki i te whanaketanga me te whakamahinga i ngā kaupapa here tūmatanui Māori i raro i ngā tikanga ka whakaata i ngā kaha, me ngā hiahia a ngā tāngata Māori, me te whakanui ake i ngā huarahi wātea mō te Māori ki te whakatinana i tēnei pūmanawa nohopuku.

*Ngā Mātāpono Arataki nei, ko te:*

Pūmanawa Nohopuku Māori – *E whakapono ana tenei mātāpono he tāngata kanorau, tūmanako te Māori, e whakamau ana i ētahi tikanga motuhake me tētahi pūnaha wāriu.*

E whakaputa ana tēnei mātāpono he tāngata kanorau te Māori, me te pūmanawa nohopuku hei tāngata whenua, tikanga, kaha hei taupori o Aotearoa, hei tāngata noho ki te ao. E whakamōhio ana kei ngā Māori katoa te pūmanawa nohopuku tūturu, ahakoa te pakeketanga, te ira tangata, te tūranga kāinga



noho, te tūrangā hapori-ōhanga rānei, me te mea ka taea te tuku, te whakatinana akiaki i a rātou pūmanawa nohopuku hei tangata ngātahi, ohu rānei.

Ko tēnei mātāpono ka arataki i a Te Puni Kōkiri ki te tautoko i te Māori ki te whakamōhio ki a rātou kaha, me a rātou pūmanawa nohopuku me te whanake, te whakarite huarahi wātea hei whakanui ake i tēnei pūmanawa nohopuku kia āhei te tautoko i te angitu tauwhiro.

*Tikanga Motuhake – E whakamōhio ana tēnei mātāpono ko te hapori Māori me a rātou tikanga tāngata whenua, he kaitakoha ki te tuakiri, te oranga, me te whakarangatiratanga i te hapori whānui ake.*

E whakamōhio ana tēnei mātāpono he wāhanga tonu ngā hapori Māori, ā, he kaitakoha atu ki te hapori whānui ake kei roto nei rātou e whaiwāhi ana. E wehewehe ana te Māori ko ngā tāngata tuatahi o Aotearoa, e tautoko ana ngā takoha tau ake ka mauria mai e rātou, ka whakarangatira i a rātou hapori, hei tāngata whenua, hei tāngata tikanga, hei tāngata o ēnei wā, o Aotearoa, me te ao.

Ka arataki tēnei mātāpono i a Te Puni Kōkiri ki te tautoko ki te hanga i tētahi taiao, me te whakarite atu i ngā huarahi wātea, mō te Māori, hei tautoko, hei whiwhi painga mai i tā rātou tuakiri tāngata whenua, me ngā tikanga i runga i ngā āhuatanga ka takoha atu ki tā rātou ake oranga, me te oranga o ngā hapori e whaiwāhi atu nei rātou.

*Raukaha Māori – E whakapono ana tēnei mātāpono i te raukaha, te kakama, me te hiahia o te Māori ki te hanga kōwhiritanga mō rātou ake*

Ko tēnei mātāpono ka arataki i te whakahaumi ki te Māori, ki a rātou ake, ki te mau mai he rerekētanga mō a rātou āhuatanga oranga me tā rātou taiao. E whakaarohia ana mā te whakarerekē i te tirohanga tāngata ki a rātou ake, me tā rātou mana ki te tū mō rātou ake, ka rerekē ano a rātou hononga atu, me ngā urupare a ngā hapori, ngā mahinga rānei e whaiwāhi atu ana rātou. E tautoko ana tēnei mātāpono, i te wā e whakapakari ana ngā raukaha whakahaere, anga whakaroto, he mea whakahirahira anō ki te hanga i te raukaha o ngā tāngata me tā rātou aronga ki a rātou kōwhiritanga me tā rātou mana ki te whakamahi.

Ka arataki tēnei mātāpono i a Te Puni Kōkiri ki te tautoko me te whakarite huarahi wātea mō te whakahaumi atu ki ngā tāngata Māori ki a rātou ake, ka hanga i tā rātou ake raukaha me te kakama kia tū hei kaiwhakakōki mō ngā rerekētanga ki tā rātou ake oranga.

## POU TARĀWAHO PŪMANAWA NOHOPUKU MĀORI

He taputapu papa-huanga te Pou Tarāwaho Pūmanawa Nohopuku Māori hei whakamōhio kei whea, me pēwhea rānei, te tautoko i te whakatinanatanga o te pūmanawa nohopuku Māori. Ka whakawhiwhia tētahi anga tohutoro



ka āwhina i te whakaputa i ngā take tuatahi hei mahinga, ka meiha, ka arotake, ka whakapūrongo i te whanaketanga tauwhiro o te Māori i te pahemotanga o te wā.

Ko Te Ira Tangata te ingoa o te āhua huanga o te pūmanawa nohopuku kua whakatinanatia, e whakaatutia ana i roto i te pou tarāwaho, ko tēnei ka whakapā atu ki te tangata Māori, me te whakatinanatanganga tutuki tā rātou oranga wairua, manawa, hinengaro, me te oranga tinana. I te mea ka whakawhirinaki atu, a tōna wā, te oranga ki ngā tāngata e pupuri aronga mō te kōwhiritanga, te whakahaerenga rānei, i a rātou oranga, ka whakaatu e te pou tarāwaho, te āhua o Te Ira Tangata, he āhua kei te whakamahi te Māori i ngā kōwhiritanga māia, whaimana, mō te kairangi o te oranga e pā mai ana ki a rātou.

E whakamōhio ana e te Pou Tarāwaho, e toru ngā kaupapa whakaāhei take nui e taketake ana ki te Māori, kia tutuki ai te kairangi oranga pai ake, me te whakatinana i tā rātou pūmanawa nohopuku. Ko ēnei ko:

- Hanga i te Mātauranga me ngā Pukenga (Mātauranga)

E tautoko ana tēnei wāhi i te whakairahitanga o te mātauranga ki te hanga māiatanga me te tuakiri, te whakatipu pukenga me ngā pūmanawa, me te whakatipu wairua hihiko me te wairua auaha. E whakaarohia ana ko te mātauranga me te pukenga ngā kaupapa whakaāhei take nui o te pūmanawa nohopuku Māori, i te mea ka whakakaupapa i te kōwhiritanga me te mana ki te mahi kia pai ake te kairangi oranga. I kōrerotia i roto i 'Te Pūrongo Hapori 2005', Ko te mātauranga me ngā pukenga ka whakakaha i te raukaha tāngata ki te whakatutuki i a rātou hiahia waiwai, ki te

whakawhānui ake i ngā momo huarahi e wātea ana ki a rātou kei ngā wāhi katoa o te oranga, ka whakaāhei i a rātou ki te whakamāro i te huarahi ka whāia e a rātou oranga.

- Whakapakari i te Kaiārahitanga me te Hanga-whakataunga (Whakamana)

E whakamōhio ana tēnei wāhi ka whakawhirinaki atu te angitu Māori ki tā rātou raukaha ki te ārahi, ki te whakamanawa, me te hanga kōwhiringa tau ake mō rātou me ētahi atu. E tautoko ana ko te raukaha me ngā huarahi wātea mō te Māori kia hanga whakataunga mō rātou ake, ki te mahi i roto i ngā āhuatanga rangatiratanga, me te whakamanawa whakataunga ka whakapā atu ki tā rātou oranga, he mea whakahirahira ki te oranga tangata ngātahi/ohu.

Ka uru mai ki tēnei wāhi ngā momo kaiārahitanga, hanga whakataunga katoa, mai i te whakahaere poari, te whakahaere, me te kaiārahitanga o tētahi atu ki tētahi tangata e whakamahi kōwhiri whaimana ana hei painga mō rātou, mō ētahi ake rānei.

- Whanaketanga me te Whakamahinga o ngā Rawa (Rawa)

E whakamōhio ana tēnei wāhi i te whakahirahitanga kia pūmau ka āhei atu te Māori ki ngā rawa e hiahia ana, i ngā wā tika, i ngā wāhi tika, kia taea te whakatutuki i a rātou hiahia waiwai, me te whakamau atu ki ngā huarahi wātea hei whakamahi, hei whanake, hei pupuri i a rātou rawa, i runga i ngā āhua ka pai ake a rātou kairangi oranga.

Kei roto i ngā rawa nei, ko ngā: rawa moni (e.g. moni whiwhi, hua), rawa taiao (e.g.

whenua, wai, tipu), rawa tinana rānei (e.g. kai, kākahu, whare noho, hangarau, whare mahi, me ētahi ake anga whakaroto) me ngā rawa katoa ake e tika ana hei whakatutuki i ngā hiahia me te whakawhiwhi huarahi wātea mō te whanaketanga tikanga, hapori, me te ōhanga Māori.

### POU TARĀWAHO HUANGA

Kua whakaūtia e te Manatū te pou tarāwaho huanga i whakaatatia i roto i ngā kaupapa take nui o te Pānui Whāinga o 2006/07. Ko te whika kei tua nei ka whakaatu i ētahi kitenga tere o ngā huanga te kau teitei a Te Puni Kōkiri mai i te Pou Tarāwaho Pūmanawa Nohopuku Māori, e whakarārangi ana ki ngā take tuatahi e toru a te Kāwanatanga, e ahu ana ki te huanga rautaki *o ngai Māori e angitu ana hei Māori*.



# POU TARĀWAHO HUANGA

## NGAI MĀORI E ANGITU ANA HEI MĀORI

### WHAKAPAKARI TUAKIRI Ā-MOTU

WHAKARITE  
WHAKATAUNGA I  
RARO I TE TIRITI O  
WAITANGI

WHANAKE I TE REO  
ME NGĀ TIKANGA  
MĀORI

WHANAKE  
MĀRAMATANGA O  
TE MĀTAURANGA  
MĀORI

WHANAKETANGA  
MARAE

### WHĀNAU TAIOHI ME TE PAKEKE

WHAKAKAHA  
HUANGA MĀORI

WHAKAPAKARI  
KAIĀRAHITANGA

WHANAKE  
HONONGA WHĀNAU

### HURIHANGA ŌHANGA

WHAKANUI TAONGA  
WHĀITI MĀORI

WHANAKETANGA  
HAUPŪ RAWA  
TANGATA  
(MĀTAURANGA ME  
TE PUKENGA)

WHAKANUI WAIRUA  
AUAHA MĀORI ME  
TE WHAIWĀHI KI  
NGĀ WĀHI HUARAH  
WĀTEA ŌHANGA

MĀTAURANGA  
WHAKAMANA  
RAWA

Ā-MOTU  
Ā-ROHE  
KĀINGA

# TUAKIRI Ā-MOTU

He rawe ta tātou whenua, he rawe anō a tātou tāngata. Ko a tātou tāngata wairua auaha kei te kawē a Aotearoa ki te ao i raro i ngā āhuratanga hou, nanawe – mā runga i ngā kiriata me ngā pūoro, ngā whetiwara me ngā hui whakaataata, ngā kanikani, ngā kapa haka, tuhituhinga. Tae atu ki a tātou kaitākaro, kaitoi, kaitutū, me ngā kaiārahi kei ngā hapori, e whakawhiwhi hiringa ki ngā taumata maha rawa atu. Kua tae mai tētahi āhua o Aotearoa ki te whakamahi, me te tuakiri pakari ake o Aotearoa e tipu mai ana. He whāinga take nui tēnei, te tautoko i tēnei tuakiri ā-motu ahurei, kua whakamōhiotia e te Kāwanatanga.

Ko tētahi o ngā wāhi kei te uhi i te kaupapa o te whakapakari i te tuakiri ā-motu, ko te whakarite ki ngā āhuratanga o mua, kia ngākau titikaha ai tātou hei whenua mō ngā wā kei mua. Koia nā te pūtaka o ngā whakataunga i raro i te Tiriti, te whakatika i ngā whakahē o mua, kia āhei tātou ki te ahu whakamua ngātahi.

Ko Te Puni Kōkiri te pokapū ārahi mō te kaupapa maungārongo. I raro i tēnei tūranga kua whakamahia e mātou te Aea Pūmanawa Nohopuku Māori hei āwhina i a mātou ki te whakaaro i ngā whakaritenga mō tēnei mahi, me āna momo herenga. I pohewatia e te Tiriti o Waitangi he whanaungatanga mahi ngātahi, whakaaro tahi i waenga i te Māori me te Karauna ki Aotearoa, me te Māori e whakaū, e whanake ana i tā rātou ake tikanga kōhure, me tētahi pūnaha wāriu, hei tūāpapa ki te whaiwāhi atu ki roto i te hapori whānui ake hei Māori. Kua whakaae te

Kāwanatanga i puta ētahi takahitanga hītori o tēnei whanaungatanga, ā i tēnei wā kei te whakatika i ēnei. Me te haere torohaki o tēnei o ngā whakaritenga whakatau Tiriti hītori. I tēnei tau ka mahi tahi te Kāwanatanga ki ngā rōpū kaikerēme rua tekau me a rātou kerēme maha.

I runga anō i tēnei, kua whakaae te Kāwanatanga ki te mea whakahirahira o te reo Māori me ngā tikanga ki roto i te hapori whānui ake o Aotearoa. Kua whakamanatia e te Kāwanatanga he take tuatahi teitei te whakaū i ngā āhua ahurei o ngā tikanga, ngā wāriu, me te tuakiri ā-motu i roto i te ao o ngā pāpāho ao whānui, me ngā tikanga ao.

Mō ēnei āhuratanga, kua whakamaua e Te Puni Kōkiri ngā wāhi take tuatahi mō āna mahinga:

- Whakarite whakataunga i raro i te Tiriti o Waitangi
- Whanake i te reo Māori me ngā tikanga
- Whanake māramatanga mō te Mātauranga Māori
- Tautoko whanaketanga o ngā Marae hei wāhi arotahi

## WHAKARITE WHAKATAUNGA I RARO I TE TIRITI O WAITANGI

Mā roto i ngā whakataunga Tiriti o Waitangi, ka taea e te Kāwanatanga te whakatika i ngā mamae kua whakapā atu ki te kaha me te whakaaro pai ki te whaiwāhi atu ki roto i te hapori o Aotearoa. Ngā mahi a Te Puni Kōkiri ka tautoko i ēnei whakaritenga.



Ko Te Puni Kōkiri te kaitohutohu mātua a te Karauna mō tāna honohononga atu ki ngā iwi, hapū, me te Māori. I roto i te rāngai whakataunga Tiriti, e whakaata ana tēnei i te whanaketanga tohutohu mō ngā kaupapa here whakataunga Tiriti, ngā māngai me ngā mana whakahaere, te whakamanatanga, te pupuri whenua me ngā here a te Karauna i raro i te Tiriti o Waitangi.

Ko tētahi huanga take nui mō Te Puni Kōkiri, ko te whakatutuki whakataunga pakari. Ka taea e ngā whakataunga Tiriti te takoha kaha tonu atu ki te whakahoki atu ki ngā rōpū kerēme ngā ōhanga, me ngā rawa ake, e hiahia ana mō te whanake hapori, me tetahi wāhanga o te rangatiratanga tangata. Koia nei ka whakaata i te arotahi o te Ara Pūmanawa Nohopuku Māori ki runga i ngā *Rawa* (Rawa) me te whakapūmau kei te whakahaere angitu te Māori i te mana me te kaitiakitanga ki runga i a rātou rawa, me te kite i ngā mahi tōtika nei e ngā kaiwhaiwāhi ake (*Whakamana*).

Mō te wā poto, ka whai tonu a Te Puni Kōkiri ki te tuku pūrongo tonu ki te Minita mō ngā Take Māori, mō te mana whakahaere a ngā rōpū kerēme, me ngā whakaritenga whakahaere hei here i ēnei rōpū. Ka whakawhiwhi tautoko anō ia mō akoranga Tiriti o Waitangi.

I roto i te wā waenga, ka arotahi atu a Te Puni Kōkiri ki te whakapūmau tonu i ngā mahi hanga i te Whakamanatanga ā Pukapuka me te whakaaetanga tere tonu. Ka takoha a Te Puni Kōkiri mā roto i āna honohononga ā-rohe me te mahi tahi ki te Tari Whakataunga i raro i Te Tiriti o Waitangi, ki te:

- Whakamōhio i ngā rōpū nunui, ao tūroa o ngā kaikerēme e taea te whakatutuki i ngā whakataunga Tiriti
- Whakahaere aromatawai i ngā Whakamanatanga ā Pukapuka ka tuku tohutohu ki ngā Minita mō ngā take e pā ana ki te whakaaetanga o te mana whakahaere o ētahi rōpū
- Tuku tohutohu mō ngā whakaritenga whakamana whakataunga me te hanga rōpū whakahaere ā-muri i ngā whakataunga.

Ko te tohu o te angitu ko te maha o ngā Whakamanatanga ā Pukapuka e oti angitu ana i roto i te tau arumoni.

## WHANAKE I TE REO MĀORI ME NGĀ TIKANGA

He taonga te reo Māori e takoha ana ki te tuakiri tikanga ahurei kōhure o ta tātou whenua. He reo ture o Aotearoa, me te reo tangata whenua o ta tātou whenua. Ko te whai rawa me te tikorikori o te reo Māori, te pūmanawa nohopuku nui tonu ki te waitohu a Aotearoa i roto i ngā wāhi tāpoi, hoko ki tai, rapu mahi, mātauranga me te pāhotanga. Ko te reo Māori anō te waka mātāmua mo te kawē i ngā tikanga Māori.

He piriponotanga mārāma, pūmau tā te Kāwanatanga ki te tautoko i te whakaoranga i te reo Māori, kei a Te Puni Kōkiri te tūranga kaiārahi kaupapa here i roto i ēnei mahi. Ka mahi tahi a Te Puni Kōkiri ki Te Taura Whiri i te Reo Māori, Te Māngai Pāho, Te Pouaka Whakaata Māori, Te Tāhuhu o te Mātauranga, Te Manatū mō ngā Tikanga me ngā Taonga Tuku Iho, Te Manatū Whanaketanga Ōhanga, me ngā pokapū, ngā rōpū e pā tata ana. Kua whakamōhioitia ko te pāpāho te waka whakahira mō te kawē i

te reo Māori, ka kaha whakahirahira ake i roto i te whakaritenga i ngā honohononga me ngā huarahi atu ki ngā pārongo hei whakapakari i ngā mahi hanga whakataunga, i waenga i ngā whānau me ngā hapori, mō ngā momo take e tautoko ana e rātou.

Kei roto i te Ruataki Reo Māori, i tuhia i te tau 2003 e Te Puni Kōkiri, me te Taura Whiri i te Reo Māori, e takoto ana ngā huanga maha mō te tipuranga me te whanaketanga o te reo Māori. Te take nui i waenga i ēnei ko te maha o rātou kua whiwhi pukenga reo Māori i piki haere nei. I te taha o tēnei, he maha ngā iwi kei te whanake i ngā rautaki iwi motuhake ki te whakapakari tuakiri mā roto i ngā kaupapa kīrehu me ngā papakupu. I tua atu, he huanga tuarua, ko te whakamahi kaha ake i te reo Māori ki roto i ngā rāhui whakahāngai take nui (hei tauira, Pokapū Kāwanatanga, Kaiwhakawhiwhi Mātauranga). E ōrite ana tēnei ki te Ara Pūmanawa Nohopuku Māori e pā ana ki *Te Ira Tangata* (Kounga Oranga), te mea nui, ko te arotahi ki te Māori e koa nā i tētahi tuakiri tikanga whakamau, tētahi raukaha tikanga pakari, me te mana ki te whakapuaki tikanga.

I roto i te anga whakamua, ka hangaia e Te Puni Kōkiri tētahi Pou Tarāwaho Pāpāho Kawantanga Māori, hei tirohanga mā te kāwanatanga. Me te hanga i te ture whakahaere mō, ā ka ārahi i tētahi arotakenga o te Ture Ratonga Pouaka Whakaata Māori 2003. Ka tuhia e Te Puni Kōkiri ngā kitenga o ngā rangahua e rua mō te mātauranga me ngā whakamahinga i te reo Māori. Koia nei ka whakamārama i ngā mahi kaupapa here ki te whakapai ake me te whakahou i te Rautaki Reo Māori.

I roto i te wā waenganui, ka whai a Te Puni Kōkiri ki te whakapūmau ka takoto tētahi pou tarāwaho kaupapa here mārama, pipiri, nonaiane tonu, mō te reo Māori, me te pāpāho Māori, ka whakarite, ka whakahaere i ngā mahi a ngā pokapū rāngai me ētahi ake. Kei ngā taumata hapori, ka mahi tonu a Te Puni Kōkiri ki te whakawhiwhi tautoko whakahaumi mō te whanaketanga me te whakamahinga mahere reo o ngā iwi me ngā hapori. Ka mahi tahi mātou ki ngā teihana reo irirangi iwi ki te whakapakari i a r' taou whakaritenga whakahaere, ka mahi hoki mātou ki te taha o ngā hapori ki te whakapakari i ngā hononga atu, kei waenganui i ngā kaiwhakawhiwhi reo Māori. Ko te tohu angitu, ko ngā painga ka hangaia, arā, mō te maha o ngā Māori ka whiwhi pukenga reo Māori (kōrero, whakarongo, pānui pukapuka, me te tuhituhi) kei ngā taumata rerekē o te tohungatanga. Hei ngā wā kei mua, ka whakainetia tēnei mā roto i ngā pārongo kei roto i ngā Rangahau Hapori Māori a te tari Tatau o Aotearoa.

## WHANAKE MĀRAMATANGA MŌ TE MĀTAURANGA MĀORI

He papa mātauranga te Mātauranga Māori hei tūāpapa mō te tikanga Māori. I runga i tēnei, mā te mārama atu ki te Mātauranga Māori, e āwhina i a mātou ki te mōhio e pewhea nei te whaiwāhi o te Māori ki te ao. I ahu mai i te mātauranga i ngā mōhiotanga tawhito ka huri mai nei ki roto i ngā reanga hou. Kei te hiahia a Te Puni Kōkiri kia mārama ki te mātauranga Māori, me ka pewha tēnei e kitea ai ki roto i ngā whakakorikori o te hapori Māori o tēnei wā. I runga atu, ka whai mātou ki te tautoko i te pupuritanga, me te whanaketanga o te mātauranga Māori, i raro i ngā whakahaere



tikanga tuturu kia whiwhi painga ai te Māori. I roto i ngā pakihi, ko ngā wāriu tawhito, ngā mahinga, me ngā kawa, ka whakawhiwhi i te Māori ki ngā painga tuturu hei mahi rongonui mā rātou.

E whakamōhio ana a Te Puni Kōkiri kei roto i ēnei wāhi ngā take kaupapa here nui tonu e pā ana ki te tikanga me ngā mana whakaaro hinengaro. Kei te mahi a Te Puni Kōkiri ki te whakapūmau ka taea e ngā tāngata Māori me a rātou rōpū te whakanui i tā rātou haupū rawa tikanga mā runga i te whakamahi kaha i te mātauranga Māori. Mā tēnei huanga e whakaata i te tirohanga o te *mātauranga* kei roto i te Ara Pūmanawa Nohopuku Māori, i te mea ko te mātauranga Māori te tūāpapa take nui mō ngā tikanga Māori.

Kei te mōhiotia he mea kunenga te mātauranga Māori, me tōna takoha whakahira atu ki ngā hapori mātauranga ā-motu, me te ao. I runga i tēnei, kei te mahi tahi a Te Puni Kōkiri ki ngā tohunga mō te mātauranga Māori, ki ngā pokapū mau tūranga, me te whaiwāhitanga ki tēnei tirohanga, ki te hanga i tētahi whakamāramatanga, whaimana, mārama, hāngai mō tēnei take.

Mō te wā poto me te wā waenganui, ka whakaotia e Te Puni Kōkiri tētahi kaupapa mahinga mō te mātauranga Māori, i a ia e hanga ana, e whakamātau ana, e tohatoha ana i tētahi whakatauki kaupapa here mō te mātauranga Māori. Kei ngā taumata hapori, ka mahi tonu mātou ki ngā whānau, ngā hapū, me ngā iwi ki te whakarite whakamahere kair-whi i waenga i ngā tohunga o te mātauranga Māori, Ka tautoko mātou i ngā mahi ki te tuhituhi me te tiaki i te mātauranga Māori, me te whakawātea atu ki ngā reanga hou, mā

runga i ngā hangarau hou. I runga atu i tēnei ka tautoko mātou i ngā huarahi ka wātea mai ki te whakatairanga mahi toi, me ngā taonga e ahu mai ana i te papanga mātauranga Māori. Ko te whakainenga o te angitu o tēnei mahinga, ko ngā painga ka tau ki ngā pokapū ake, mai i te mātauranga Māori, me a rātou tautokohanga ki te kaiārahitanga a Te Puni Kōkiri ki roto i ēnei mahinga. Ki ngā taumata hapori, ka whakainetia te angitu ki roto i te kohikohinga me te tātaritanga o ngā pārongo kāinga ka whakaatu i te whakapātanga tōrunga o ngā kōkiri whakahaumi.

## TAUTOKO WHANAKETANGA O NGĀ MARAE HEI WĀHI AROTAHI

He wāhi whakahirahira ngā papa marae hei whakaatu whakatinana i te mātauranga Māori. Kei ētahi hapori koia tonu ngā wāhi mō ngā mahinga tikanga, ngā pokapū honohono mō ngā Māori kei ngā tāone, te whakaora i te reo, me te wāhi mō ngā kaupapa mahinga hapori, e whai nei ēnei ki te whakapai ake i ngā kounga oranga o te Māori. I tua atu, koia nei ngā whare pākoro mō ngā taonga. Kei te arotahi a Te Puni Kōkiri ki te whakapūmau ka tautokona e ngā pou tarāwaho kaupapa here te rangatiratanga o ngā marae.

Ko tētahi o ngā huanga take nui a Te Puni Kōkiri ko te tuku i te tautoko ki ngā marae mō tā rātou tūranga hei wāhi mō te mahinga whakamōhio i te mātauranga Māori. Ka whakaata e Te Puni Kōkiri ngā kaupapa a te Ara Pūmanawa Nohopuku Māori e mahi ana mō te raukaha me te kōhure tikanga a te Māori, me te mahi haere tonu ki ngā iwi, me ngā pokapū tika ake, (hei tauira, Te Tari Taiwhenua, ngā Tari Kaunihera Ā-Rohe, me te Ratonga Patu Ahi o Aotearoa) ki te whakapūmau ka whakaritea e ngā taiao kaupapa here ngā marae ki te



whakamōhio me te whakamahi atu ki a rātou  
ake hiahia whanaketanga.

Hei te wā poto ka whakaotia ka tuhia e Te  
Puni Kōkiri ngā kitenga o tētahi kitenga ā-  
motu o ngā marae, koia nei whiwhi papanga  
tohutohu ki ngā rōpū tuku moni me ngā  
pokapū ake kei te tautoko i ngā marae.  
Ka whai tonu a Te Puni Kōkiri ki te hono  
takawaenga atu ki aua pokapū e whakaritea  
ana i ngā huinga kaupapa here e pā ana ki ngā  
marae. Kei ngā taumata hapori, ka whanake ka  
tohatohatia he kete taputapu ki ngā marae ki  
te hoatu tohutohu mō take pēnei i ngā mana  
whakahaere kaitiaki, ngā inihua marae, me te  
whanaketanga i ngā wāhi katoa o ngā marae.  
I tua atu, ka tautoko mātou i te whakataetae  
mahi tahi, whakahoahoa i waenga i ngā marae  
mā te huihui, te hākinakina, me ngā mahinga  
tikanga.



# NGĀ WHĀNAU – TAIOHI ME NGĀ PAKEKE

26

He hītori whakahīhi tā Aotearoa mō te wairua auaha hapori. Mō te kotahi rau tau, neke atu ki muri, i te whai mātou o tēnei whenua, ki te hanga i tētahi hapori e whakamau ana i ngā tohu o te whakapono, me te whakaāpiti, me te whakapūmau i te whakapono ki te katoa. Koia nei te āhua o Aotearoa. I a ia e whakahaere tonu ana i tēnei ia o te wairua auaha hapori, kua hangaia e te Kāwanatanga he whāinga whakarewa mō ngā tau tekau kei mua, arā, kia mau ki ngā whānau, taiohi me ngā pakeke katoa, te tautoko me ngā kōwhiringa e hiahia ana rātou ki te noho pūmau me te āhei ki te eke ki tā rātou ake pūmanawa nohopuku i roto i tā tātou ohanga papa mātauranga. Ko tēnei ko te tautoko i ngā tāngata pakeketanga katoa, ki te hanga painga mai i a rātou raukaha, me ngā huarahi wātea, kia noho hei wāhanga whaiwāriu o a rātou whānau me a rātou hapori, me te noho hauora pai, haumarū pai, taituarā. E rima ngā kaupapa kua whakamōhiotia ki te tautoko i tēnei whāinga: whānau pakari, tamariki hauora ngākau titikaha, hapori haumarū, hauora pai ake mō te katoa; me te pakeketanga tōrunga.

Kei te hiahia a Te Puni Kōkiri ki te whakatinana i te pūmanawa nohopuku Māori ki roto i ēnei kaupapa katoa. Ko ngā Kaupapa a te Ara Pūmanawa Nohopuku Māori kei te whakamārama i a mātou mōhiotanga mō enei take. Te mea nui, e mōhio ana mātou he kōhure tikanga te Māori, e whakahaere ana i a rātou wae whānau hei whānau; he raukaha te Māori kei a rātou te wawata me te kakama ki te hanga kōwhiringa mō rātou ake i roto i

ngā whānau. I runga i ngā tau e rua ki muri, i te whakahaere e Te Puni Kōkiri tētahi kaupapa mahinga Whakamahi me te Rangahau Whanaketanga Whānau. I roto i ngā kitenga take nui o tēnei rangahau ko:

- Te whānau te wae uho o te hapori Māori, me te waka mātāmua mō te hurihanga waenga reanga o ngā mātauranga me ngā tikanga Māori;
- Te whanaketanga whānau te wāhi tērā ka whakamōhio atu ki a rātou ake wawata me ngā take tuatahi, ka taea te whakamahere ka whakamahi i a rātou ake kōkiritanga.

He whānau taituarā te whānau pakari. Ko Ngā Whānau – Taiohi me ngā Pakeke koia nei ko te hauora, te haumarū me te taituarā, me ngā huarahi wātea mō ngā mema katoa o ngā whānau katoa, i tēnei rā, me ngā reanga kei mua. I a Te Puni Kōkiri e hanga ana ki runga i a mātou rangahau ki ngā whānau, e pono ana mātou ko te whakanui i te pūmanawa nohopuku whānau koia nei te huarahi hāngai, te huarahi whakamau, ki te whakamahi i ngā kaupapa e rima kei roto i te whāinga whakarewa mō Ngā Whānau – Taiohi me ngā Pakeke.

Kua whakamōhio mātou i ngā wāhi take tuatahi e whai ake nei kei roto i a mātou mahi, hei whakanui i te pūmanawā nohopuku whānau:

- Te whakakaha ake i ngā huanga whānau
- Te whanake hononga whānau
- Te whakapakari kaiārahitanga whānau.

## TE WHAKAKAHA AKE I NGĀ HUANGA WHĀNAU

Ko te whānau te wae uho o te hapori Māori, ā, i runga i tēnei ko te whānau te māngai mō te whanaketanga tōrunga Māori, me te kaiwhakaterere ki te whakatinana i te pūmanawa nohopuku Māori. E whakapono ana a Te Puni Kōkiri i ngā wāhi kei reira te anga whakaroto whānau pakari, ka mau ki ngā mema whānau te kōwhiringa oranga nui ake, te kounga oranga, me ngā painga haupū rawa. Ahakoa te pakeke, te ira tangata, te kāinga, te mana tangata hapori ōhanga rānei, kei ngā tāngata katoa te pūmanawa nohopuku tōrunga. Ko te whāinga whakamutunga a Te Puni Kōkiri ko te kite i te Māori e whakatutuki ana i te kounga oranga tino pai rawa atu, ko rātou ake ko te Māori e whakamōhio ana, e whanake ana i ngā huarahi wātea ki te whakanau i ā rātou pūmanawa nohopuku whānau. E kitea ana e Te Puni Kōkiri ko te whakanui ake i te pūmanawa nohopuku whānau he mea taketake mō te whakapai ake i te kounga orangā. Kei te hiahia kia pakari, kia hauora, kia honohono ngā whānau. I roto i te reo poto, ko te whānau pakari te akoranga tōmua mō te whanaketanga Māori whānuitanga. Kei te hiahia a Te Puni Kōkiri ki te whakapakari i te kaupapa here me te taiao whakahaere ki te whakakaha i ngā huanga ture, huanga whare, me ngā huanga hokohoko mahi, mō ngā whānau.

Kei te mahi tahi a Te Puni Kōkiri ki ngā pokapū whanaketanga hapori tāpiri atu ki te Manatū mō te Whanaketanga Hapori, Te Tāhuhu o te

Mātauranga, te Manatū mō te Hauora, Hanga Whare Aotearoa, me te Tari mō te Hanga Whare; te Kōmihana Whānau; me ētahi ake pokapū e whaiwāhi ana ki te whanaketanga whānau. Ka whai tonu mātou ki te kimi kia mahi tahi ki ngā pokapū, e kawea ana i te mana whakahaere mātāmua mō te tuku, ki te rapu āhuatanga hou hei whakaterere huanga pai ake mō ngā whānau.

Ko te huanga take nui mō Te Puni Kōkiri ko te Māori kua kaha ki te whakatinana i tā rātou pūmanawa nohopuku ki roto i ngā rāhui, e kōwhiri ana e rātou ko ngā whānau kōhure tikanga, ngā whānau raukaha. Mō tēnei, mō ngā tau e rua kei mua, ka whakatairanga e Te Puni Kōkiri tētahi tauira mahinga tahi atu ki ngā pokapū kāwanatanga ake, tērā ka tāpiri ngā huarahi take tuatahi taumata kāinga, me te hokohoko i ngā kanataraki kōmitimiti. Ka whakawhiwhi anō a Te Puni Kōkiri i ngā tohutohu kaupapa here whakaaro tuarua nui tonu, ki ngā pokapū whanaketanga hapori mō ngā take ka whakapā atu ki ngā whānau.

I te wā waenganui, kei te mahi a Te Puni Kōkiri ki te whakaha ake i ngā wāhanga tikanga, hapori, ōhanga, me te taiao, o te oranga whānau. Ka takoha atu a Te Puni Kōkiri ki tēnei mā te tuhi i tētahi papa taunakitanga pakari mō te whanaketanga kaupapa here mā roto i te rangahau me te aromatawai i ngā kōkiritanga whānau. Ka mahi anō a Te Puni Kōkiri ki te whakapakari i ngā honohononga mahinga tahi tauwhiro ki ngā iwi me te Māori e pupuri ana i te mana whakahaere hei māngai



whānau. Ka whai ano ia ki te whakakaha ake i ngā whakahaumitanga ki ngā whānau e hangaia ana e te Pūtea Pūmanawa Nohopuku Māori mā roto i te aroturuki ka whakatau i ngā whakaritenga hāngai pai ake mō te whakatinana i te pūmanawa nohopuku whānau. Kei ngā taumata kāinga, ka mahi hāngai atu mātou ki ngā whānau ki te whakapūmau kei te hono atu rātou ki ngā huarahi wātea o te mātauranga me te rapu mahi. Ka mahi anō mātou ki te whakapakari i ngā whaiwāhitanga whānau kia pūmau te whai atu ki ngā painga me ngā ratonga katoa e āhei ana rātou, i roto i ngā rāngai whanaketanga hauora, me te hapori. I tua atu ka tautoko mātou i ngā kaupapa mahi hapori, me ngā ratonga e hangaia, e whanaketia, e tukuna ana e te Māori ki roto i te wāhi ture.

## TE WHANAKE HONONGA WHĀNAU

I roto i ngā rangahau, kua whakamōhiotia e ngā whānau te mea whakahira ki te honohono, tetahi ki tētahi, kia taea anō rātou te hanga anō i ngā mātauranga me ngā tikanga whānau, me ngā mahinga o te whakawhiti mātauranga whānau. Kei te hiahia anō a Te Puni Kōkiri ki te whakapūmau i te tautokohanga o ngā pou tarāwaho i ngā honohononga whānau, me te whakakaha i ngā whānau kia riro mai a rātou ake painga tōtika.

Te huanga take nui mō Te Puni Kōkiri, ko te whakapūmau ka hono atu ngā whānau, tētahi ki tētahi. Kei te whakamahia ngā whānau i tā rāou honohononga hei whanake i tā ratou tuakiri whānau mā roto i te whakawhiti o te mātauranga me ngā tikanga, me te whakapakari i ngā whānau hei pūtahi whakahaere hāngai. Mā roto i ēnei whakaritenga, ka whakawhiwhi tautokohanga ngā whānau mō a rāto tamariki me a rātou

kaumātua. Koia nei e whakaata ana i te tirohanga o *Te Ira Tangata* kei roto i te Ara Pūmanawa Nohopuku Māori, kei konei ko te hononga hapori, tikanga, pakari he āhuatanga whakawhiti hurihanga o ngā orangā Māori me ngā whakawaia tōpū.

Ka mahi a Te Puni Kōkiri ki te taha o ngā iwi, me ngā rōpū Māori; te Manatū Whanaketanga Hapori; te Manatū mō te Hauora; Hanga Whare Aotearoa, me te Tari mō te Whare me te Hanga; te Kōmihana Whānau; me ngā pokapū ake e whaiwāhi ana ki te whanaketanga whānau.

Hei te wā poto kei mua, e whakaaro ana a Te Puni Kōkiri ki te whanake me te tuhi pārongo me ngā kete taputapu mō ngā momo hononga whānau. Ka whakawhiwhi tohutohu kaupapa here ki ngā pokapū mō ngā tikanga honohono whānau ki roto i te whanaketanga whānau, ka hanga whakaritenga o te angitu whānau, me ngā tauira angitu, me ngā rangahau kaupapa. I te taumata kāinga ka whakawhiwhi tautoko mātou ki te hanga me te whakahaere i ngā kaitiaki whānau hei waka mo ngā honohononga whānau. Ka tautoko anō e mātou ngā mahinga ka whakawhiwhi huarahi wātea ki ngā whānau ki te hono, me te hono anō, tāpiri atu ki ngā mahi hākinakina, ngā hui, ngā wānanga, me ngā hui whakaatu.

I roto i te wā waenga, ka hono a Te Puni Kōkiri ki ngā whānau mā roto i ngā takawaenga e whakamau arotahi ana ki te whanaketanga whānau. Ka tautoko a Te Puni Kōkiri i ngā pokapū nei, mā te whakatū mōhiotanga mārama mō, me te tūranga kaupapa here ki runga i, te āhua o ngā honohononga whānau, te mea nui, me te whanaketanga whānau whānui ake. Ka mahi tahi ki ngā

kaitakawaenga ki te tautoko i ngā hononga whānau, ka tuku pūrongo ki te Minita mō ngā Take Māori, me ētahi ake kaiwhaiwāhi take nui, mō ngā take e pā ana ki ngā hononga whānau me te whanaketanga whānau.

## TE WHAKAPAKARI KAIĀRAHITANGA WHĀNAU.

I ngā tau ki muri i kite mātou i ngā painga i roto i te akoranga Māori, te rapu mahi, me te tūranga hauora. Tētahi, ko te tikanga kei te whakahaere ake te Māori i tā rātou oranga ake, te whaiwāhi whai tikanga ki ngā ōhanga o Aotearoa mā roto i te mātauranga, rapu mahi, me te hinonga. Kua whakamōhio mai ngā whānau ko te kaiārahitanga te kaupapa whakahira mō te whanaketanga whānau whānui.

He maha ngā āhuatanga o tēnei kaiārahitanga, tāpiri atu ko te kaiārahitanga tikanga, te whakahaere i ngā taonga whānau, me te whiwhinga o te mahere kairiwhi ki ngā whānau. He rahi tonu te papa rawa Māori me te ōhanga, kei te tipu ake. Ko te hiahia ko ngā kaiārahi whai pukenga whānui, me ngā tohungatanga taumata teitei hei whakahaere ka whakatipu ake i nga rawa nei. Mā roto i te tautoko whakahaere hāngai, me te whakahaere o ngā taonga Māori, me ngā hinonga, ka āwhina mātou ki te hanga i tētahi taiao ka whakapai kaha ake ngā hua painga ki te Māori, ka āwhina i te painga ake o te kouniga oranga. Me rapu anō ngā whānau i ngā kaiārahi pakari, kia pūmau haere tonu tā rātou whanaketanga hapori, tikanga. Heoi, me whai atu ngā whanaketanga kaupapa here mō ngā whānau me te Māori, ki te whakaata me te takoha ki te whakaū me te whakakaha i te kaiārahitanga Māori.

Ka hāngai atu ngā mahinga a Te Puni Kōkiri ki te tautoko i ngā whānau ki te whakamōhio ka whai i a rātou pānga kaiārahitanga. Ko te huanga take nui kua whakamōhiohia e Te Puni Kōkiri ko te whakatū i ngā kaiārahi Māori kei te whakawhiwhi kaiārahitanga i roto i a rātou whānau, hapū, me ngā iwi, ki roto o Aotearoa, me ngā atamira o te ao whānui. Ko rātou ka whakamahi i ngā whakahaere kaha ake o ngā taonga, me ngā tāngata mō te whanaketanga ōhanga, hapori me te tikanga. Ko tēnei ka whakaata i te tirohanga o te *whakamana* kei roto i te Pūmanawa Nohopuku Māori, e tautoko ana ko te kaiārahitanga pakari, matakite, ki ngā taumata katoa, o te hapori Māori, ka ārahi, ka whakamau i te angitu tōpū, me te ahunga whakamua. E mahi ana a Te Puni Kōkiri ki ngā pokapū e pupuri tūranga, e whaipānga ana ki ngā whānau me te kaiārahitanga Māori, tāpiri atu ki te Manatū mō ngā Take Wāhine, Te Tāhuhu o te Mātauranga, me te Pokapū Whanaketanga Kaiārahitanga.

Hei te wā poto, ka whakaotia e Te Puni Kōkiri he mahinga nui tonu mō ngā 'huatanga whakaterere i te kaiārahitanga whānau me te Māori, ka tuhia ka tohatohatia. Ka whakatika anō e mātou tā mātou papa tautapa, kia taea e mātou whakaingoa ka tautoko i te Māori ki roto i ngā tūranga whakahaere me te kaiārahitanga. Hei te wā waenganui, ka hangaia e Te Puni Kōkiri he mōhiotanga mārama ki te kaiārahitanga whānau me te Māori, ngā whakaritenga me ngā tikanga hei whakatairanga i tōnā whanaketanga. Ka hangaia e mātou tētahi kaupapa mahinga hei tautoko i te whakamahere kairiwhi ki ngā taumata katoa o te hapori Māori. Ki ngā taumata kāinga, ka whakawhiwhi tautoko mātou ki te whakanui ake i te raukaha me te mana o ngā whānau ki te whakahaere



i a rātou rōpū kaitiaki me ngā taputapu  
pupuri tōpū. Ka tautoko anō mātou i ngā  
tohu iwi, ngā tohu rāngai e whakanui ana e  
whakatairanga ana i ngā kaiārahi rongonui. Ka  
mahi anō mātou ki te taha o ngā pokapū ake,  
me ngā kāwanatanga ā-kāinga, ki te tautoko i  
a rātou ki te honohono me te mahi tahi ki ngā  
kaiārahitanga whānau, iwi.

# HURIHANGA ŌHANGA

Kei te piripono te Kāwanatanga ki te whakapiki i ngā moni whiwhi me te kounga o te oranga mō te katoa, ā, kei te whakanui i te hurihanga ōhanga tētahi o āna wāhi take tuatahi e toru, mō ngā tekau tau kei mua. Kua whakamōhiotia te hiahia kia maha ake ngā tāngata wairua auaha, whakamau whakararu, me ngā rakahinonga. Ko Aotearoa he whenua kei reira ngā kaihanganga me ngā kaihononga. Kei reira ngā tikanga pakari mō te whakatika raruraru whaikiko. He hapori hononga piri mātou, ā, ka rere pai ngā whakaaro. Ka takoha atu ēnei mea katoa ki tētahi āhua wairua auaha teitei. E whai ana te hurihanga ōhanga ki te hanga ki runga i tēnei hitori wairua auaha, anō tēnei mō te hanga i tētahi ōhanga ārahi mātauranga, wairua auaha, e hanga ana e te pakihi auaha, e whakakaupapa ana i tētahi anga whakaroto e pai ana mō te ao, e whakahaeretia ana i runga i te āhua taiao tauwhiro.

Mā roto i te tipuranga ōhanga, ka hanga tōpū te hapori i te whakaputa hiahia ana ki te whakapai ake ngā rātonga me te whakapiki i ngā whakaritenga oranga. Ko te takoha tino nui tonu ki te hurihanga ōhanga Māori, mā roto i tēnei wāhi take tuatahi, ka haere mai i te Māori e pupuri ana i te raukaha ki te ārahi, te tautoko, me te hanga whakataunga tōrunga mō rātou mō tā rātou whaiwāhitanga ki roto i te ōhanga, mā roto i te:

- Mātauranga
- Rapu Mahi
- Whakamahinga hāngai o ngā taonga tōpū
- Whakataunga whakahaumi

Ko te tūranga a Te Puni Kōkiri, he hanga taiao whakaāhei mō te Māori ki te whakapūmau hurihanga ōhanga ka ārahi ki ngā moni whiwhi teitei ake me te whaiwāhitanga kaha ake i roto i te ōhanga papa mātauranga, mā roto i te wairua auaha me te auaha. Ko te wero, he hanga i tētahi ōhanga tauwhiro i runga i te papa wairua auaha me te kounga. Mā te piriponotanga ki te tauwhiro tanganga nui ake ki roto i tā mātou whakamahi rawa, me te āhua o te oranga, e whakapūmau ka tiakina tā tātou taiao, ka tauāraia tā tātou ōhanga ki ngā whakararu nui tonu. Ko te whakahaumi atu ki ngā pukenga, ngā akoranga, ngā rangahau, ngā taiao me ngā hangarau ka whakakaha i ngā pukenga me ngā mātauranga o ngā tāngata o Aotearoa, i te mutunga ka whakapiki i ngā āhua oranga mō te katoa.

I a ia e whakamārama ana i te tūranga o te Māori i roto i te hurihanga ōhanga, ka arotahi atu a Te Puni Kōkiri ki te hanga i tētahi papa taunakitanga me ngā raukaha kaupapa here ki te tautoko i te:

- Whakanui ake i ngā taonga Māori tōpū
- Whakapai ake i ngā akoranga me ngā pukenga
- Whakanui ake i te wairua auaha Māori me te whaiwāhitanga ki roto i ngā kaupapa hokohoko e puta mai ana.

## WHAKANUI AKE I NGĀ TAONGA MĀORI TŌPŪ

He nui tonu te papa taonga arumoni Māori – e whakaaro tūpato ana kei te āhua \$9 pirione, i te tau 2001. He pānga pupuri tōpū tā te Māori



ki roto i ngā taonga nui tonu tāpiri atu ki ngā whenua, ika, ahumoana, me nga ngahere. Nā reira ka arotahi a Te Puni Kōkiri ki te hanga taiao whakaāhei hei whakapūmau i te Māori ki te whakanui i ngā painga whiwhi i runga i ēnei taonga katoa.

Kei te hono kaha rawa atu te whanaketanga ōhanga Māori ki te tipuranga ōhanga o tā tātou whenua. Nā reira ko tā mātou wero ko te whakawātea i te pūmanawa nohopuku kei roto i ngā papa taonga Māori e tipu ake ana, me te taupori Māori e tipu ake ana. Ko te huanga take nui mō Te Puni Kōkiri ko te kite painga nui ake, ki ngā kaipupuri, mai i ngā whenua Māori.

Hei mahi i tēnei, ka haere tonu ngā mahi a Te Puni Kōkiri ki te taha o te Manatū Ture, Pārongo Whenua Aotearoa, te Manatū Ahuwhenua me ngā Ngahere, te Manatū mō te Whanaketanga Ohanga, te Manatū mō te Taiao, Te Tāhuhu o te Mātauranga, Hokohoko me ngā Hinonga o Aotearoa, te Tūāpapa mō te Rangahau, Pūtaiao, me te Hangarau.

Te takoha a Te Puni Kōkiri ko te whakawhiwhi tohutohu kaupapa here me ngā pou tarāwaho kaupapa here mō te whenua Māori. Ka aromatawai, ka takawaenga atu a Te Puni Kōkiri ki ngā popkapū rāngai mō a rātou takoha ki tēnei mahi. Mā mātou anō e whakawhiwhi moni mō ngā whakamahinga wairua auaha; me te hokohoko honohonga mō te angitu ki roto i te rāngai.

I runga i ngā tau e rua kei mua, e hiahia ana a Te Puni Kōkiri ki te aromatawai tonu i te haere o te Kaupapa Rēhitatanga Whenua Wātea Māori – te whakamahi i ngā tohu whai tikanga me ngā rārangi wā kei roto i te Mahere Whanaketanga Whenua Māori hei whakaine angitu.

I roto i te wā waenganui, kei te hiahia a Te Puni Kōkiri ki te kite kua tutuki te rēhita tika i nga whenua Māori, me te wātea mai o ngā pārongo mō te tūranga me ngā mahinga i ngā whenua. E hiahia ana a Te Puni Kōkiri ki te whakapūmau ka whakatūria he anga kāwanatanga hei tautoko i ngā wawata Māori mō a rātou whenua, me ngā whakangungu ka wātea mai mō ngā kaiwhakahaere o ēnei whenua. Me tētahi take tuatahi mō Te Puni Kōkiri, te whakapūmau kei konā ngā tautoko whakarite Kāwanatanga mō te whanaketanga whenua Māori hei mahinga mā ngā kaipupuri. Kei ngā taumata kāinga, ka mahi haere tonu mātou ki ngā whānau ki te whanake ara wairua auaha mō te ahu i a rātou whenua kia whai hua painga me te whakawhiwhi pārongo ki ngā kaipupuri taonga iwi mō ngā āhuatanga pakihi ā-motu, me te ao whānui, me ngā ia taiao, me ngā take e whakapā ana ki a rātou. Ka mahi tahi mātou ki ngā pokapū kāwanatanga ake ki te whakapūmau ka taea te Māori te tango pārongo hei tautoko i a rātou whakataunga mō te whakahaere i a rātou taonga.

## WHAKAPAI AKE I TE MĀTAURANGA ME TE TUKU TŪRANGA MAHI

E tautoko ana a Te Puni Kōkiri ko te takoha tino nui rawa atu ki te whanaketanga Ōhanga Māori, mō ngā tau 20 kei mua, ka haere mai i te whakapainga ake i te mātauranga me ngā pukenga o ngā tāngata Māori. Ka pēnei i te mea ko te raukaha ki te whakanui ake i ngā painga mai i ngā taonga pupuri tōpū, kei te hono tuturu atu ki ētahi rōpū mahi Māori kei te pupuri pukenga teitei me te wairua auaha. Ko te whaiwāhitanga me ngā whakatutukitanga a te Māori ki roto i te mātauranga me ngā huarahi wātea rapu mahi whai kiko, koia nei ka mau i te tūranga taketake ka tīmata ki ngā akoranga kōhungahunga.



I a Te Puni Kōkiri e mahi ana ki te taha o te Tari Mahi, te Manatū mō te Whanaketanga Hapori, te Tāhuhu mō te Mātauranga, te Kōmihana Akoranga Kura Wānanga, Te Uepu Ā-motu Te Kaitiaki Ā-motu a Te Kōhanga Reo, Te Rūnanganui o ngā Kura Kaupapa Māori, me ētahi ake pokapū e pā tata ana, me ngā rōpū, i konei ka whakawhiwhi tohutohu me ngā tautokohanga hei whakakaha ake i ngā huanga mātauranga, rapu mahi me ngā hinonga Māori.

Ko ngā huanga take nui mō Te Puni Kōkiri ko te kite i ngā akonga Māori e whakatutuki ana i ngā tohungatanga me ngā mātauranga e haihia ana e te katoa. Anō, te kite kua mau kē e ngā akonga Māori ngā mātauranga me ngā tohungatanga ki te whaiwāhi atu ki te Ao Māori i ngā wā e hiahia ana rātou. E rite ana ēnei huanga ki *Ka Hikitia*, he pukapuka whaiwāhitanga o te tau 2006, i tuhia e Te Tāhuhu o te Mātauranga mō te whakatakoto i ngā take tuatahi mo te mātauranga Māori. Ka whakaata anō rātou te arotahi a te Ara Pūmanawa Nohopuku Māori mō *Mātauranga*, te mea nui, te pupuri i ngā pukenga oranga, pukenga hangarau me te ngākau titikaha ki te whakamahia i aua pukenga kia tutuki a rātou wawata, me tā rātou kounga o te oranga.

Tētahi huanga take nui mō Te Puni Kōkiri e pā ana ki te rapu mahi, ko te kite i te Māori e whakatutuki ana i tā rātou pūmanawa nohopuku mā roto i te mahi tauwhiro, te whaiwāhitanga kaha ake, ngā pukenga pai ake, ngā tohu mātauranga, me ngā rakahinongatanga nui ake. E ōrite ana ēnei huanga ki te Pou Tārāwaho kaupapa here a te kāwanatanga mō te rapu mahi tauwhiro mō te Māori. E whakaata ana anō te arotahi mō te Ara Pūmanawa Nohopuku Māori mō ngā Rawa, te mea nui, te arotahi o te Māori e koa

ana i roto i te taumata teitei o te oranga, me te takoha atu ki te tōnuitanga ā-motu.

Ka takoha atu a Te Puni Kōkiri mā te whakawhiwhi tohutohu kaupapa here mō ngā pou tarāwaho kaupapa here mō te mātauranga Māori, me te rapu mahi Māori, me ngā take motuhake kei roto i ēnei pou tarāwaho. Ka aromatawai, ka takawaenga atu a Te Puni Kōkiri ki ngā pokapū rāngai mō tā rātou takoha atu ki tēnei mahi. E whakawhiwhi moni ana anō mātou mō ngā mahinga wairua auaha, ka hokohoko honohononga mō te angitu ki roto i te rāngai.

Hei te wā poto, ka whai a Te Puni Kōkiri ki te whakawhiwhi tohutohu kaupapa here mō ngā mahinga o te Rautaki Mātauranga Māori, me te Pou Tarāwaho kaupapa here mō te rapu mahi tauwhiro mō te Māori. Ka whanaketia anō e ia tētahi papa raraunga rangahau ine nui, kounga kairangi, ki roto i ēnei rāngai, tae atu ki te takoha atu ki ngā mahi kaupapa here e pā ana ki te Putunga Kaiako Māori. Kei te taumata kāinga, ka mahi mātou ki te taha o ngā whānau me ngā iwi, ki te tautoko honohononga kaha ake ki te mātauranga me te whakatutuki tohu mātauranga, ka hanga ara atu ki roto i te rāngai rautaki me te rāngai e puta mai ana ki roto i te ōhanga wairua auaha. Ka whakarite anō e mātou he honohononga me ngā huarahi wātea mō ngā taiohi Māori, kia uru atu ki ngā ahumahi papa-mātauranga, me te whanake i te papa pukenga ki te hanga i a rātou ake pakihī.

I roto i te wā wāenganui, ka whai a Te Puni Kōkiri ki te whakapūmau ka takoto ngā pou tarāwaho kaupapa here mārama, pipiri, o inaianei, e whakatika ana i te mātauranga Māori me te rapu mahi Māori ki runga i te kāwanatanga-katoa. Ka āwhina a Te Puni Kōkiri



ki te whakatika i ngā take motuhake ka puta mai, me te takoha atu ki te aromatawai me te whakapūrongo i ngā wā katoa.

Ko ngā tohu whakahirahira o te angitu o ngā mahi a Te Puni Kōkiri ko te maha ake o ngā akoranga Māori e wehe atu ana i ngā kura tuarua, me te mau tohu whai tikanga; me te maha o te Māori kei roto i te rōpū mahi, me ngā utu mahi e piki haere ana. Ka aromatawai a Te Puni Kōkiri i ēnei pārongo mā roto i ngā pūrongo ia, mahinga a ngā tari ā-rohe, ngā raraunga whakatutuki e kohia ana e te Mana Tohu Mātauranga o Aotearoa, me te Tāhuhu o te Mātauranga, me te Rangahau Rōpū Mahi Whare ia hauwhā.

### WHAKANUI AKE I NGĀ WAIRUA AUHA ME NGĀ WHAIWĀHITANGA MĀORI KI ROTO I NGĀ MĀKETE E PUTA MAI ANA

He kaiwhaiwāhi pakari tonu te Māori i roto i tēnei whakahaere o te hurihanga ōhanga. Te whakamōhiotanga, te whanaketanga, me te arumonitanga o ngā hua hou, me ngā huarahi hou, koia nei te wero wairua auaha mō ngā hinonga katoa. Kei te hiahia a Te Puni Kōkiri ki te whakapūmau ka taea te Māori te tango hua mai i ngā huarahi ka wātea mai ki a rātou i roto i te ōhanga o Aotearoa i tipu ake ana, kua puta ki te ao, kua papa mātauranga. Me whakaae rā ko ngā wāriu, ngā mahinga, me ngā tikanga, tērā pea ka whakawhiwhi i te Māori ki ngā painga whakataetae ao tūroa ka taea e rātou te whakamau atu.

I a ia e mahi tahi ana ki te Manatū mō te Whanaketanga Ōhanga, te Tari Tatau o Aotearoa, me ētahi ake rōpū, me ngā pokapū e arotahi ana ki te hurihanga ōhanga, Kei te hiahia a Te Puni Kōkiri ki te whakapūmau i te

tipuranga me te rerenga kē o te papa taonga tōpū e ahu ana ki te wāhanga e nui ake ana o te ōhanga. Tētahi, he huanga take nui ake kō te whakawhānui ake o ngā mahinga ōhanga Māori mā roto i te wairua auaha.

Ka takoha a Te Puni Kōkiri mā te whakawhiwhi tohutohu kaupapa here mō ngā pou tarāwaho kaupapa here mō te wairua auaha Māori. Ka aromatawai, ka takawaenga atu ki ngā pokapū rāngai mō tā rātou takoha ki ēnei mahi. E whakawhiwhi moni ana anō mātou mō ngā mahinga wairua auaha, ka hokohoko honohononga mō te angitu ki roto i te rāngai.

Hei te wā waenganui kei mua ka whanake e Te Puni Kōkiri tētahi papa taunakitanga hei whakaine i te whaiwāhitanga Māori ki roto i te punaha ōhanga. Ka whanaketia anō tētahi taputapu matapae hei whakaine i te whakapātanga a te whaiwāhitanga Māori ki runga i ngā rāngai motuhake o te ōhanga. Ka whai anō ki te whakakaha ake i te papa taunakitanga hei whakaine i te whaiwāhitanga Māori ki roto i ngā ōhanga ā-rohe rerekē.

I roto i te wā waenganui, ka whai a Te Puni Kōkiri ki te whakapūmau i tētahi papa taunakitanga o te whaiwāhitanga Māori ki roto i te pūnaha ōhanga. Mā tēnei papa taunakitanga ōhanga o te whaiwāhitanga Māori e whakapūmau ka taea e Te Puni Kōkiri te ārahi ka whakawhiwhi tohutohu whai kiko mō ngā wāhanga motuhake o te tipuranga me te wairua auaha.

Ka tāpiri atu ki ngā whakaine angitu ko te wāhanga e pupuri ana e te Māori i te pūnaha ōhanga me te wāhanga e pupuri ana e te Māori

o te māketē hoko ki tai. Ka kohia ēnei pārongo mā roto i te whakahou i te Rōpū Kaute Hapori, me ngā taurā matapae, ngā pārongo a te Tari Tatau Aotearoa me te tuhituhi i ngā kōkiri iwi motuhake.



# WHAKARĀPOPOTOTANGA O NGĀ TOHU

Ka whakamahi e Te Puni Kōkiri ngā tohu e whai ake nei, ki te whakamōhio i ngā whakahaere atu ki te whakatutukitanga o ngā huanga kei runga ake nei:

## *Whakapakari i te Tuakiri Ā-motu*

- Te maha o ngā pukapuka whakamana kua whakaotia i roto i te tau ā-moni.
- Te maha o ngā tāngata Māori kua mau i ngā pukenga reo Māori (kōrero, whakarongo, pānui pukapuka, me te tuhituhi) kei ngā taumata rerekē o te tohungatanga.
- Ngā tangohanga o a mātou mahinga kaupapa here mō te mātauranga Māori i waenga i ngā pokapū take nui.
- Te maha o ngā marae e whakamahia ana ia marama

Ka kohikohia e mātou ēnei pārongo i raro i ngā momo taputapu, tāpiri atu ki: te Rangahau Reo Māori, me te Rangahau Marae e whakahaeretia ana e Te Puni Kōkiri, me te Rangahau Hapori Māori e whakahaeretia ana e te Tari Tātari o Aotearoa.

## *Ngā Whānau Taiohi me ngā Pakeke*

- Te maha o ngā kaitiaki whānau a whakamahia ana.
- Ngā tangohanga o ngā taputapu whanaketanga whānau i hangaia e Te Puni Kōkiri.
- Te maha o ngā tāngata Māori kei roto i ngā tūranga whakahaere i runga i ngā mauri kāwanatanga, me ngā kaunihera ā-rohe.

Ka kohikohia e mātou ēnei pārongo i raro i ngā momo taputapu, tāpiri atu ki te patengi o ngā kaitiaki whānau, me tētahi patengi whakaingoa e whakahaere ana e Te Puni Kōkiri.

## *Hurihanga Ōhanga*

- Ngā tohu whai tikanga me ngā rārangi wā i roto i te Mahere Mahinga Whanaketanga Whenua Māori kua kawea.
- Te maha o ngā Māori e wehe mai ana i ngā kura tuarua e whiwhi tohu tikanga ana.
- Te maha o ngā Māori kei roto i te rōpū mahi, me te piki haere o ngā maniuutu.
- E whaiwāhi ana te Māori ki roto i pūnaha ōhanga whānui ake o Aotearoa.
- Te wāhanga o te Māori ki roto i ngā hokohoko ki tai whānui.

Ka kohikohia e mātou ēnei pārongo i raro i ngā momo taputapu, tāpiri atu ki: te Kōpū Kaute Hapori, kua hangaia e Te Puni Kōkiri, me ngā raraunga whakatutuki i kohikohia e te Mana Tohu Mātauranga o Aotearoa, me te Tāhuhu o te Mātauranga, me te Rangahau Rōpū Mahi o ia Whare ia toru marama.



3. KA PĒWHEA MĀTOU  
MAHI AI



# WHAKAMAU TIROHANGA WHĀNUI KI NGĀ KAUPAPA HERE KĀWANATANGA

Ko tētahi o ngā tūranga mahi whakawero nui tonu mō Te Puni Kōkiri ko te whakaū i te tirohanga whānui o ngā kōkiri kaupapa here kāwanatanga katoa me a rātou whakapātanga atu ki te oranga Māori. Ka tau te raukaha, a Te Puni Kōkiri ki te whakatutuki i tōna tūranga mahi, te tohutohu i te Kāwanatanga, ki runga i tōna raukaha ki te whakamārama atu, me te tango whakamāramatanga mai, i āna kaiwhaiwāhi Māori. Ko te tikanga o tēnei, ka mahi a Te Puni Kōkiri mā roto i āna tari ā-rohe ki te Māori, me te hāpori whānui ake, ki te tohu i ngā wāhi take tuatahi, me te whakamōhio hāngai i ēnei ki ngā Minita ake me ngā pokapū kāwanatanga. Mā ēnei wāhi take tuatahi e whakahāngai i ngā huarahi wātea mō te mahinga pai ake i ngā taonga pupuri a te Māori, me te whakatika i ngā aukatinga ki a *ngai Māori e angitu ana hei Māori*.

He tūranga mahi ano tā Te Puni Kōkiri ki te whakapūmau ko ngā tohutohu kaupapa here e whakawhiwhia ana e ērā Minita ake, ka pātata atu ki ngā take Māori, ka whai anō ki te whakamana i ngā pokapū kāwanatanga, o ngā rohe, o ngā tari matua, ki te whakapai ake i ngā huanga mō ngā whānau, ngā hapū, ngā iwi, me te Māori. Kua hangaia e Te Puni Kōkiri tētahi Pou Tarāwaho Pūmanawa Nohopuku Māori, tēnei he taputapu papa-huanga, ka whakamōhio, ki whea, me pēwhea te tautoko i te whakatinanatanga o te pūmanawa nohopuku Māori. Ka whakawhiwhi i tētahi pou tarāwaho o ngā whakapuakanga ka āwhina ki te whakamōhio i ngā take tuatahi

hei mahinga, ka meiha, ka whai atu, ka hanga pūrongo i ngā whanaketanga tauwhiro o te Māori i aua wā.

## WHAKAMANA KAUPAPA HERE

I te rangahau a Te Puni Kōkiri i ngā huarahi mō te Māori ki te whaiwāhi kaha ake ki ngā whanaketanga kaupapa here e pā ana ki a rātou. Ki ngā tirohanga a Te Puni Kōkiri, ko te rerenga mahi ahurei i waenga i te Tari Matua me ngā tari ā-rohe, koia nei ka whakapūmau te whakaata o ngā kaupapa here kāwanatanga i ngā tūmanako o te Māori ki ngā taumata katoa. E whakanuia ana a Te Puni Kōkiri ki runga i ēnei whakamōhioatanga ki ngā wāhi katoa o te rāngai kāwanatanga.

## HONOHONONGA ME NGĀ PĀRONGO

Ko te wāhanga Honohononga me ngā Pārongo ka whakawhiwhi herenga hāngai mō Te Puni Kōkiri ki ngā whānau, ngā hapū, ngā iwi, me ngā hāpori Māori, mā roto i āna tari ā-rohe, 13, me ngā tari amiorangi, 8. Ko tēnei herenga ka tautoko i ngā Kaupapa Here Māori ki:

- Te whakamārama i tāna whakawhiwhinga tohutohu kaupapa here ki ngā whakapuakanga ahurei mō ngā whānau, ngā hapū, ngā iwi me te Māori;
- Te mahi i raro i te māramatanga mō ngā take tuatahi me ngā mahere Māori;
- Te whakamau atu ki ngā honohononga kaiwhaiwāhi kua hangaia ki roto i ngā rohe; me
- Te tautoko i te tūranga mahi a ngā kaimahi ā-rohe a Te Puni Kōkiri ki te whakarite,

te hokohoko, me te whakahaere i ngā whakautu ' a te kāwanatanga katoa' i ngā wā e tika ana.

## AROTURUKI HUANGA ME TE TAKAWAENGA POKAPŪ

Ko tētahi wāhanga o tā mātou tūranga mahi, kua whakamanatia e te Ture Manatū mō te Whanaketanga Māori, ko te aroturuki me te takawaenga ki ia tari kāwanatanga me ngā pokapū e whakawhiwhi ratonga ana ki te Māori, mō te Māori rānei. I ētahi wā i ngā tau tekau ki muri, i whakaotia a mātou herenga mahi aroturuki mā roto i ngā arotake hāngaitanga, ngā arotake pokapū, me ngā aromatawai kaupapa mahi. I whakahaumi anō mātou ki ngā kaupapa mahi pārongo, me te whakaputa pukapuka, i kohikohia, i kōtuituitia, i whakapūrongo mō ngā tatauranga me ngā rangahau Māori.

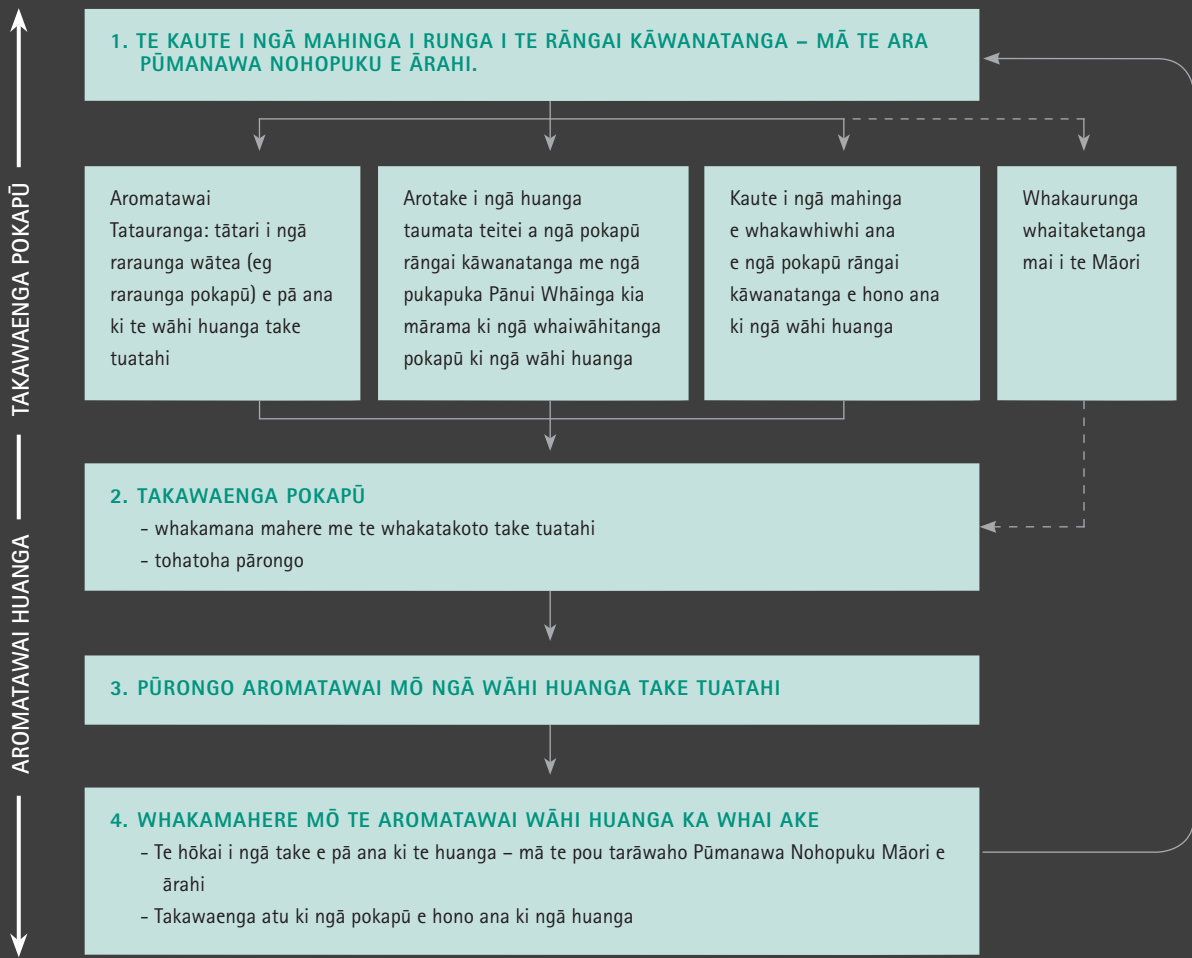
Mai i te tau 2003, kua neke te āhua o a mātou mahi ki te whakatutuki i ngā herenga i raro i te Ture, tētahi wāhi i whakatauria e ērā ake pokapū kāwanatanga kua matatau ake ki te hanga, te tukunga, me te arotakenga o ngā mahinga ki te whakapiki i ngā ekenga o te Māori, te kohikohinga, te tātaritanga, me te whakapūrongo i ngā raraunga tōtika.

Ināianei, kei te hanga e mātou tētahi kaupapa mahi hou o ngā aroturuki huanga me te takawaenga pokapū, kua hanga atu ki runga i ngā mahinga o mua. Ka whakaurua tēnei kaupapa mahi, i ngā wā, i runga i ngā wāhi huanga take tuatahi, ka whakaata i ngā

huanga taumata-teitei i roto i tēnei Pānui Whāinga, me te tātari i ngā pūrongo ia a ngā tari ā-rohe. Ko te ara aroturuki huanga me te takawaenga pokapū, kahore ko te arotahi arotake pokapū, koia nei ka whakaū i te tūranga o Te Puni Kōkiri, ināianei, arā, te "hoa kōrero hē", kahore i te whakamaui i te tūranga aroturuki urutapu. Ko te Ripanga 1 e whakarāpopoto ana i te ara aromatawai huanga me te takawaenga pokapū.



Ripanga 1: Ngā wehenga kaupapa mahi mō te aromatawai huanga me te takawaenga pokapū.





# WHAKAINE HĀNGAITANGA

I runga i te kupu ngāwari, he pūnaha te inenga mahinga ki te whakaine me te tātari mahinga atu ki ngā hua kua pānuitia. Mō te wā roa, ko te āhua o te hāngaitanga o te rōpū, ko tōna kaha ki te puta ora tonu. Heoi, mō te wā poto, he maha ngā tikanga hei whakarite. Kahore rawa tētahi kaupapa mō te whakaine i te hāngaitanga. I roto i Te Puni Kōkiri, i te pātai mātou ki a mātou tonu, "He aha ngā mea e hiahia nei mātou ki te whakaine – tā mātou hāngaitanga ki te mahi i te aha?"

I te wā e rapu ana mātou i ngā whakautu mō ēnei pātai, me titiro atu te tātari mahinga ki tua o te huanga motuhake, kia mārama ai he aha i takoha atu, mai i ngā kaupapa here, ngā whakataunga, ngā whakaritenga me ngā whakarerekētanga i roto i te taiao whānui ake.

Kei te pono tā mātou whakaaro, ko te hāngaitanga a Te Puni Kōkiri, a tōna wā, ka whakaarotia ko te whakarautanga e taea e mātou te whakatinana i ngā tūmanako o te minenga, ko te pai rānei o a mātou mahi mō te Minita mō ngā Take Māori, me ngā hiahia o a mātou kaiwhaiwāhi ake, tae atu ki a ngai Māori.

Te katoa o a mātou kaiwhakahaere kei te whakamana i tā mātou hāngaitanga, kahore anake i roto i ngā mahinga atu ki ngā huanga kua hangaia e te rōpū, engari anō ko rātou ka whakatakoto, ka whakamātau i ngā mahi i roto i ngā āhuatanga e rite tonu te whakarerekē, arā, ngā waiaro o te katoa, ngā hiahia hapori, ngā hangarau, me ngā tikanga

ōhanga.

I roto o Te Puni Kōkiri, rite tonu tā matou aroturuki i ngā mahinga kia pūmau te mōhio, he aha ngā kaupapa e oti ana e mātou, me te ōrite i enei otinga ki ērā e hiahia ana. Hei tauira, ko tētahi huarahi ngāwari, ko te whakawhaiti pūrongo ā-rohe mō "ngā mea kei te mahi pai – kahore rānei". I tua atu, kua hanga he tohu mahinga hei whakarite i te whakainenga i te hāngaitanga me te hanga pai o a mātou mahi. He mea tino pūtake ēnei tohu me ā rātou tikanga whakapiri, mō ngā whakarite, nga whakaine kia tohua mai ngā kounga me te rahi o a mātou mahinga. Ka whai mātou ki te here i ngā whakainenga huanga (ngā taumata whakatutuki) atu ki ngā paearu e takoto ana i roto i te mahere Whakaputa, ki te tātari moni rānei, kia whiwhi ai te rōpū whakahaere ngā whakaritenga mō ngā tohu hāngaitanga, me te hanga pai – kia whakaatutia mehemea e tutuki pai ana te mahere, me te pai rānei o a mātou whakamahinga i ngā rawa i roto i ngā whakaritenga.

Mō te take ki te hanga i te hāngaitanga utu mō ngā mahinga a Te Puni Kōkiri, i raro i ngā here o Tekiona 40 (a) (11) o te Ture Moni Tūmatanui 1989, kei te mahi tonu mātou i runga i ngā āhuatanga whanake ritenga tōtika. Ahakoa a mātou mahinga uho, arā, te whakawhiwhi tohutohu kaupapa here, kahore i te whakapā tata atu ki te tātari hāngaitanga utu tōtika, (utu mō ia wae o ngā painga e riro mai ana) kei te titiro mātou ki te here atu i



ngā mahinga e tukuna e Te Puni Kōkiri ki ngā huanga e hiahia ana. Ko ngā mahi haere tonu ki te whakatakoto huanga, te whakapai ake i ngā tohu e whakaarotia ana, me te hanga i tētahi anga whakaroto aroturuki, koia nei ka whakaāhei i a mātou ki te hanga i tētahi takotoranga tikanga hāngaitanga-utu tōtika, ka tāpiritia ki roto i te Pānui Whāinga ka whai ake.

# HAUORA WHAKARITENGA

Hei whakanui ake i te takoha a Te Puni Kōkiri ki ngā take tuatahi e hiahia ana e te Kāwanatanga, he mea tino pūtake kia rite tonu tā mātou arotahi atu ki te whakakaha i tā mātou ake raukaha. I te mutunga o te tau 2006, i oti tētahi arotake tauwhiro ki te whakatau mehemea i a Te Puni Kōkiri te anga utunga tika rawa hei whakamahi tika, hāngai i ngā mahinga e tono mai ana e te Kāwanatanga.

Ko te kitenga nui tonu mai i tēnei arotake ko te tautokohanga i whakawhiwhia mō tā mātou whakarerekētanga huarahi rautaki i te marama o Hui-tanguru 2004. Mā te tautokohanga o ngā mahi kua tīmatatia kē e mātou, me te whakamahinga o ngā kōkiri whakahāngai, tōtika hou, mā konei e whakatū i a mātou ki tētahi tūranga pakari ki te kawē/takoha atu ki ngā huanga e hiahia ana e a mātou kaiwhaiwāhi.

Kia oti angitu ai, me kaha tonu ngā kaiārahitanga o tā mātou rōpū, me mārāma tonu ngā kitenga huarahi, me tētahi āhua whakamōhio rite tonu i ngā huanga ka whai ki te whakatutuki. Rite tonu tā mātou whai kia rōpū hauora, tīkorikori mātou, e mau ana i ngā rawa tōtika ki te whakatutuki i te huanga rautaki, te whakaoti i te tūranga mahi, me te neke whakamua tika atu ki te take nei te whakatinana i te pūmanawa nohopuku. A tōna wā, mā konei ka whakapūmau tō mātou angitu.

I runga i tēnei whakaaro, kua arotaketia e Te

Puni Kōkiri āna whāinga ā-roto o mua, me āna mahinga, kia arotahi atu ki te whakapai ake i ngā wāhi tino whai tikanga e whai ake nei:

- Te whaiwāhi hāngai tonu ki te whakatairanga me te whakamōhio i ngā huanga mō ngā kaupapa kei raro i te mana whakahaere a Te Puni Kōkiri;
- Te whakakaha ake i ngā honohononga pakari ā-waho, kia āhei mātou ki te whakawhiwhi tohutohu kounga, me te kawē i a mātou whakahaere i runga i ngā āhuatanga hāngai rawa atu;
- Te tautoko me te whanake i ngā kaiwhakahaere e whai ana i ngā tūranga kaiārahitanga;
- Te whakaū i ngā pūnaha, ngā anga, me ngā whakaritenga, tae atu ki tētahi rautaki whakahaumi whakakorikori me te pānuī kaupapa here ki roto i te pukapuka kotahi kia āhei mātou ki te mahi hei rōpū papamahinga e arotahi ana ki ngā "mahinga tino pai", me
- Te whakatū kaimahi hiranga kei a rātou te mātauranga kounga kairangi, te piriponotanga, ngā pukenga whakaōrite mahinga ngātahi, rōpū rānei, ka taea te mahi i runga i te kaingākautanga o *ngai Māori e angitu ana hei Māori*.

## WHAKAHAERE PĀRONGO

I runga i te whakaotinga o te rautaki whakahaere pārongo, hei tautoko i ngā mahinga o mua ki te Whakahaere Mātauranga, kua mau e Te Puni Kōkiri tētahi pou tarāwaho hei hopu pārongo ka tohatohatia ki te ngā wāhanga katoa o te rōpū. Tāpiri atu



ki te whakahaere i te kohikohi pārongo kei ngā taumata ā-rohe, hei tohutohu i te whanaketanga kaupapa here, te arotake, me te rangahau.

### RAUKAHA TĀNGATA

E arotahi ana mātou ki te whapakari i a mātou tāngata kei ngā taumata katoa o tā mātou rōpū, e pono taketake ana mātou ka whakapai ake i ngā huanga kaiwhaiwāhi, me te whakapūmau i tā mātou angitu a tōna mutunga. Ko ēnei wāhanga ohu e rua ka whakatuāpapa i tā mātou *Rautaki Raukaha Tāngata atu ki 2010* – te hanga i tā mātou raukaha tāngata, me te whakaū i tētahi rōpū mahinga tino pai. Kei te piripono mātou ki te hanga i a Te Puni Kōkiri hei wāhi ngākaunui ngā tāngata ki te mahi, me te whai kaha ki te whanake, ka hanga rerekētanga.

### MAHINGA ME TE WHANAKETANGA

Kei ia kaimahi o Te Puni Kōkiri tētahi mahere Mahinga me te Whanaketanga ngātahi, e whakamahia ana i ngā wā katoa i runga i ngā kōrerorerotanga ki a rātou kaiwhakahaere whakahaere rārangi. He whakaritenga whai tikanga, kua hangaia i waenganui hei whakapūmau te ahunga whakamua mō te whanaketanga a te kaimahi, ka whakainea ngā mahinga kia piri tata tonu ki ngā tohungatanga kua whakaetia i runga i te rōpū. He tikanga whakatutukitanga tā mātou e whakatauāki ana i ngā taumata katoa – ka utua ngā kaitutuki teitei i runga i a rātou mahinga pai.

### KAUPAPA MAHI WHANAKETANGA KAIĀRAHITANGA PAETAHI

Ko tēnei kaupapa mahi e hoatu whakamōhiotanga whānui ki ngā paetahi mō Te Puni Kōkiri, me te taunga tuatahi

i ngā whakahaere o tētahi rōpū rāngai kāwanatanga. Te mea nui ka whiwhi rātou i tētahi huarahi wātea ki te mahi ki te taha o ngā tāngata e tautoko kaha ana i te Māori ki te whakatinana i tā rātou pūmanawa nohopuku. Ka whiwhi tohungatanga i roto i ngā hurihanga tūranga kua hangaia, me ngā tautoko mai i ngā kaitautoko me ngā kaupapa whakangungu.

### ĪRITENGA MAHI/ORANGA

E whakamanawa kaha ana mātou i a mātou tāngata ki te rapu i te ĩritenga mahi/oranga e hiahia ana rātou, me rātou e arotahi ana ki te hanga taiao tautoko o ngā kōkiritanga e hangaia ana e a mātou tāngata i waho i ngā wāhi mahi. Ko ngā tauira e tāpiri ana ko te kaupapa wā wātea hei utu, te piriponotanga ki te hauora pai, whakaitinga o ngā haora/rā mahi ia wiki, wā utu mō te tangihanga, me te mahi ki pāmamao.

### KIMI KAIMAHI

Kei te takoto pūmau ngā kaupapa mō te kimi kaimahi me ngā nekenekenga o a mātou tāngata i roto o Te Puni Kōkiri. Ka pānuitia ngā tūranga wātea ki roto, ā-muri iho ka whakapuakina ki ngā tono o waho. Āhua 59% o ngā tūranga wātea i riro ki ngā kaitono o roto, i tērā tau.

### HURIHANGA

Kei te aroturukitia te hurihanga kaimahi ā-tau ia toru marama, ā, kua heke haere ki te 10.75% i tēnei wā, mai i te whika papanga i whakaarotia, te kaumārua marama ki muri.

### UTU KĀWANATANGA ME TE TŌKEKE TŪRANGA MAHI

Hei whakautu ki te Mahere Mahinga Tōkeke Tūranga Mahi rima tau a te Kāwanatanga, ka

hangaia e Te Puni Kōkiri tētahi ArotakeTōkeke Utu me te Tūranga Mahi i mua o te 30 o Mahuru 2007, ka whakawhanake i tētahi mahere whakautua a te haurua tuarua o 2007/08. Mā te arotake e whakatau : mehemea ka tau ki ngā wāhine me ngā tāne te tohatoha ōrite o ngā utu; ka whaiwāhi rātou ki roto i ngā wāhi katoa o Te Puni Kōkiri; ā, ka manaakitia rātou katoa ki te aroha me te pono tika.

## WHAKAMŌHIOTANGA

Te hiahia a Te Puni Kōkiri kia tū hei kaiwhakamōhio hāngai ake, ā, ka whai mātou ki te whakatairanga kakama i ngā mahinga me ngā whakatutukitanga a Te Puni Kōkiri. Ko te tuhinga o *Toronga Ā-motu – Pānga Ā-rohe* i Poutū-terangi 2007, he mahi angitu ki te whakaatu i ngā kōrero paki i ngā wāhi i takoha atu a Te Puni Kōkiri ki te whanaketanga Māori. Kua whakamaheretia ētahi ake tuhinga i tēnei wā kei te whakapakaritia ngā mahinga whakamōhio i roto o Te Puni Kōkiri ki te kawē pārongo tōtika, wā tika, meka ki ngā kaimahi me ngā kaiwhaiwāhi kia ōrite tonu.

## HANGA I TĒTAHI PAPA WHAKARITENGA AROTAKE

Ko ngā mahinga take nui ki te hanga i tētahi papa whakaritenga hei tautoko i te rautaki arotake kō te mahi ki te:

- *Whakakaha i te kahapupuri arotake* – ki te whakahaere me te whakarite i te kaupapa mahi arotake, te whakawhiwhi tohutohu, me te whakaae, ka whakahaere mahinga arotake kounga kairangi;
- *Whakakaha i te raukaha arotake* – te whakapūmau kei te mōhio ngā tāngata e whaiwāhi ana, ki te whakatakoto, te whakarite, te whakamahere, me te kawē i te aronga, hei āwhea, me pewhea te

whakatairanga mahinga arotake, me pewhea te whakaae me te whakahaere i tēnei, ā, me pewhea whakamahi i ngā hua; me

- *Whanake pūnaha me ngā hātepe* – te whakapūmau ka hangaia ngā hiahia arotake me ngā taputapu ki roto i ngā wāhanga katoa o te huringa whakahaere, ka whakamōhio ngā hua o ngā mahinga arotake kia mārama ai ngā mahi hanga whakataunga.

## WHANAKE PŪNAHA ME NGĀ HĀTEPE

Hei te tau kei mua nei, ka arotake mātou i a mātou pūnaha me ngā hātepe, ki te whakapūmau ka hangaia ngā hiahia arotake me ngā taputapu ki roto i ngā wāhanga katoa o te huringa whakahaere. Te mea nui ka arotaketia ngā pūnaha me nga hātepe ka whakamahia ki te whakahaere, te whakaine, me te hanga pūrongo mō ngā whakahaumitanga, kia pūmau ka oti i ērā te:

- whakaāhehi ki te kohi taunakitanga mō te angitu me ngā akoranga mai i ngā whakahaumitanga; me
- whakaae kia tātaritia ngā hua, ka whakaemia kia taea te whakahoki atu hei whakamārama i ngā whakaritenga whakatakoto aronga, me ngā whakamahere.

Ka whanaketia ngā pūnaha me ngā whakaritenga kia whiwhia he manawarū hei tautoko i te arotakenga me te tautoko i tōna whakamahinga.

I runga i tōna tūranga mema o te Kaupapa Mahinga GOVT 3, kei te piripono a Te Puni Kōkiri ki te mahi whai atu ki ngā pou e toru o te tauwhiro tangata: taiao, hapori me te ōhanga.



Ko ngā kōkiri kua oti ināianeī, ko;

- te whakaiti i te nui o ngā mea mōumou e mauria ana ki ngā whakakī whenua, mā roto i te whakatairanga i ngā mahinga ki te whakaheke, te whakamahi anō, te whakahoki, me te whakawairākau;
- te whakapai ake i ngā whakahaere rōpū waka ki te whakaheke i ngā hinu me te CO2;
- te whai whakaaro atu ki ngā mahinga pakihi tauwhiro i ngā wā e hanga kanataraki ana mō ngā ratonga.

### AROTAKENGA I TE PŪTEA PŪMANAWA NOHOPUKU MĀORI

Te take mō te arotakenga o te Pūtea Pūmanawa Nohopuku Māori hei whakaatu i te takohanga o te pūtea atu ki ngā huanga taumata teitei a Te Puni Kōkiri. Kia ngākau titikaha ai kei te whakahaere hāngai te Pūtea Pūmanawa Nohopuku Māori, me whakapūmau tonu mātou:

- Ko ngā whakahaumitanga a te pūtea kei te whakarārangi atu ki ngā hiahia tika;
- E hanga tika ana ngā whakahaumitanga hei whakapai ake i ngā huanga;
- E whakarārangi ana te rahi, te kōunga, me te uHINGA o ngā whakahaumitanga ki tā mātou whakaritenga mahinga;
- Kei te pai ake ngā hua me ngā huanga i roto i ngā wāhi e manakotia ana; me
- Kua puta he rerekētanga mai i ngā whakahaumitanga<sup>3</sup>.

Ka oti te arotakenga o te Pūtea Pūmanawa Nohopuku Māori i mua i te marama o Pipiri 2009.

### WHAKAHAERE HONOHOONGA

E whakamau tikanga whakahirahira rawa atu ana a Te Puni Kōkiri ki ngā honohononga kōunga kairangi me ngā pārongo e tōtika ana ki te whakawhiwhi i ngā raraunga me te āhuatanga pakihi rautaki kei roto nei ngā honohononga e whanake ana, e whakaū ana. Kua kitea e te Rautaki Whakahaere Honohononga, e haere ana tonu, kua whakapaingia ake, te pakaritanga o ngā honohononga kua hangaia ki te kaiwhaiwāhi take nui, otirā ki te Māori.

Ko te kupenga mahi a ngā tari ā-rohe a Te Puni Kōkiri, me a rātou mahinga ngātahi ki ngā taumata kāinga, koia nei te arotahi tino pai a te Rautaki Whakahaere Honohononga.

Te mea nui, e whaiwāhi ana ki te:

- Whakaohoho, te whanake, te whakamōhio, me te whakatinana i te Pūmanawa Nohopuku mā runga i ngā honohononga kaiwhaiwāhi take nui;
- Hanga honohononga pakari ake ki ngā whānau; hapū; iwi; rōpū Māori; me ngā hāpori kia āhei rātou te hanga huarahi wātea tauwhiro mō rātou ake;
- Whakapakari mahinga ngātahi i waenganui i te Māori me ētahi ake kaiwhaiwāhi;
- Kohikohi pārongo mai i ngā rohe hei whakamārama i ngā mahinga whanaketanga Māori me te whakahaumitanga atu ki ngā tāngata Māori;
- Whakamahi pārongo kua kohia hei whakamārama whanaketanga kaupapa here;

<sup>3</sup> Te Ako mai ngā Mahinga Arotakenga i Whakahaere Ake i ngā Mahinga mā roto i te Whakahaere Papanga Huanga, a Te Kōmihana o ngā Tari Kāwanatanga o (2003), i hangaia e te Rōpū Urungi mō te Whakahaere i ngā Huanga Kawenga 2004/05, Whiringa-ārangi 2003, p7.

- Whakarite whaiwāhitanga wā tika mō te Kāwanatanga ki te Māori me te whakakaha i tērā whakapiringa; me te
- Whanake mahere pakihi, mahinga, e ōrite ana ki ngā wawata Māori me ngā take tuatahi kāwanatanga.



## WHĀINGA WHANAKETANGA MŌ NGĀ TARI KĀWANATANGA

Kei te takoha atu a Te Puni Kōkiri ki ngā whāinga i hangaia e Te Komihana o ngā Tari Kāwanatanga e whakaaturia ana ki raro nei.

### Whāinga 1:

#### KAITUKU MAHI KUA KŌWHIRITIA

Te whakapūmau he kaituku mahi kua kōwhiritia, e manea ana ki ngā kaitutuki teitei, me te piripono ki te tuku ratonga.

#### Horopaki

E whakawhiwhi ana e te Pou Tarāwaho Pūmanawa Nohopuku Māori tētahi ara rite, mārama, whai tikanga, mō Te Puni Kōkiri hei whakahaere i āna mahi pakihi mā roto i ngā kaupapa here, me te whakamahinga whakahaere o ngā kaupapa Take Māori.

E mārama ana ngā kaitango mahi me ngā kaiwhaiwāhi take nui ki te pou tarāwaho, ki te mea me pewhea, he aha ai a rātou mahinga e takoha atu ki tā mātou huanga tino nui

Kei te whakatikatika tonu, me te whakawhanake tonu te whāinga rautaki ki te whakatū i a Te Puni Kōkiri hei tauranga mahi e haihia ana mō ngā taurira whai pukenga, ngā tāngata ngaio, me ngā kaimahi tūmatanui.

### Whāinga 2:

#### KAIMAHI KĀWANATANGA HIRANGA

Whanake i tētahi tikanga o te ako haere tonu i roto i ngā whai i te hiranga.

#### Horopaki

He rōpū hauora, whai kaha, ka whakapūmau kei a Te Puni Kōkiri ngā kaimahi, me te raukaha rawa hei whakatutuki i tāna huanga rautaki, hei whakamahi i tāna tūranga, me te haere whakamua ki tōna take, te whakatinana i te pūmanawa nohopuku Māori.

E whakahāngai atu ana tā mātou *Rautaki Raukaha Tāngata ki 2010*, ki te " whakamanea, whakawhanake, me te pupuri i tētahi rōpū tāngata pukenga teitei".



**Whāinga 3:****TARI KĀWANATANGA KUA HONOHOA**

Whakamahi hangarau ki te huri i te whakawhiwhinga ratonga mō ngā tāngata o Aotearoa.

**Horopaki**

Hanga i tētahi taiao e taea e ngā kaimahi te whakarite me te tohatoha mātauranga i runga i te āhua mārama e whakahau ana i a rātou katoa kei Te Puni Kōkiri, te whakamau i ngā whakahaere, me te tohatoha i ngā mātauranga, hei wāhanga o a rātou mahinga ia rā, ia rā.

**Mahinga***Whakahaere Mātauranga*

He mea tino whai tikanga te whakamahi i ngā Whakahaere Mātauranga i roto o Te Puni Kōkiri, mō te ārahi angitu i ngā kaupapa here tūmatanui Māori, me te whakahaere i ngā honohononga me ngā pārongo.

*Honohononga Tohatoha Kāwanatanga, Ipurangi ā-roto Rāngai Tūmatanui*

Ko Te Puni Kōkiri tētahi o ngā rōpū tuatahi kua haina atu ki te Honohononga Tohatoha Kāwanatanga.

He mema a Te Puni Kōkiri o te Ipurangi ā-roto Rāngai Kāwanatanga, ka whai ki te whakatairanga whānui ake i te rawa ki ngā kaimahi.

**Whāinga 4:****POKAPŪ KĀWANATANGA KUA WHAKARITEA**

Whakapūmau ka nui ake te takoha tōpūtanga a ngā pokapū kāwanatanga ki tā te tōpūtanga o ngā wāhanga.

**Horopaki**

Ko te ara a Te Puni Kōkiri o te ahu whakamua ngātahi e whakamōhio ana i te hiahia ki te mahi ngātahi ki te kaiwhaiwāhi ā-waho, tāpiri atu ki ngā pokapū rāngai kāwanatanga, ngā hapū, ngā whānau, ngā iwi, ngā rōpū Māori, me ngā hapori.

E mahi ana mātou ki te taha o ngā pokapū ake me ngā pūtahi ki te āwhina i a rātou ki te whakawhānui ake a rātou kohingā raraunga me ngā kaupapa mahinga rangahau kia taea ai mātou te whakamahi tōpū i ngā momo taunakitanga whānui rawa atu o te angitu Māori.

**Mahinga***Aroaro A-rohe Pakari*

Te arotahi tuatahi a Rautaki Whakahaere Honohononga a Te Puni Kōkiri, ko te whakapakari i te hononga o ngā Tari A-rohe me te tautoko i a rātou mahi kei ngā taumata kāinga, tāpiri atu ki te whakawhiwhi tūāpapa mō ngā mahinga tahi waenga pokapū kāinga.

Kei te takoha kaha tonu atu ngā Tari A-rohe ki ngā momo kaupapa whānui e whakapā ana ki ngā tari kāwanatanga me ngā pokapū kāwanatanga kaunihera. Ka tāpiri atu ki ēnei ko te Kaupapa Salix o Taupo, ngā Wānanga Waenga –rāngai A-rohe, te Kaupapa Taiohi o Manukau, Tipuranga – kakama o te uru o Waiariki, me ngā tūmomo kōkiri tāpoi.

*Rautaki Reo Māori*

Kei a Te Puni Kōkiri te mana whakahaere mō te whakarite, te aromatawai, me te tautoko i ngā pokapū e whaiwāhi ana ki te Rautaki Reo Māori, tāpiri ki te MCH, te Puna Mātauranga, TTW, TMP, me MED.

*Rautaki Ororua*

Kei te whaiwāhi a Te Puni Kōkiri ki ngā hui rōpū tohutohu whakawhiwhi-kāwanatanga, tāpiri atu ki te Rōpū Rārangai Take Ororua.

*Whāinga 5:***RATONGA KĀWANATANGA WHAKAĀHEI**

Te whakakaha huarahi, whakautu, me te hāngaitanga, me te whakapai ake i ngā mōhiotanga o ngā tāngata o Aotearoa ki ngā Ratonga Kāwanatanga.

**Horopaki**

E tautoko ana a Te Puni Kōkiri i te mea whakahirahira o ngā honohononga kounga kairangi me ngā pārongo hei whakamahi i āna Huanga Rautaki me ngā Huanga Wā Waenganui. Ko te Rautaki Whakahaere Honohononga ka whakahohonu i ngā honohononga kua hangaia ki ngā kaiwhaiwāhi take nui me te Māori.

**Mahinga**

Ko a mātou kaimahi ā-rohe nekeneke ka whakamau tūranga take nui ki te here i ngā hapori me ngā rōpū Māori tuawhenua ki ētahi pokapū me ngā ratonga.

Mā te ipuranga hou a Te Puni Kōkiri e whakapai ake i te huarahi me te whakamahi mō a mātou manuhiri mā te:

Tautuku ki ngā Rarangi ārahi Ipurangi o Aotearoa; te whakamahi mahinga tino pai ki ngā hanga me te whanake i te 'titiro me te whāwhā', pārongo hoahoanga, whakamahinga me ngā tohu pūmanawa, horopaki tuhinga –pai; me ngā whakaritenga pai ake mō te whakahou horopaki me te whakautu ki ngā whakahoki kaiwhakamahi.

Ko Kōkiri te pukapuka matua ā-waho me tāna take tuatahi, ki te whakawhiwhi karere take nui ka tāpiri ki te whakanui whakatutukitanga Māori; te whakatinana pūmanawa nohopuku Māori; me te Māori e angitu ana hei Māori. Ko Kōkiri anō te waka mō ngā tari Kāwanatanga ake ki te whakamārama i a rātou kupu karere ki te Māori. E tāpiri ana te Māori ki roto i te whakaminenga.

*Whāinga 6:***TARI KĀWANATANGA E WHAKAPONOTIA ANA**

Te whakapakari i te pononga ki ngā Tari Kāwanatanga, me te tautoko anō i te wairua o ngā ratonga.

**Horopaki**

Kei a Te Puni Kōkiri tētahi mahinga kaiārahitanga matua ki te tohutohu mō ngā honohononga i waenga i te Karauna, ngā iwi, ngā hapū, ngā whānau me te Māori. E mahi ana ngā kaimahi ki ngā hononga tahi i waenga i ngā hapori Māori me te Kāwanatanga, me te whakaatu i tōnā ngākau pono hei kaitohutohu kaupapa here ārahi mō ēnei take.

Kei a Te Puni Kōkiri te mana whakahaere ā-ture ki te whakapūmau tautuku Te Taura Whiri i te Reo Māori, Te Māngai Pāho, me te Ratonga Pouaka Whakaata Māori, i a rātou ake Pānui Whāinga.

# NGĀ WHAKARARU RAUTAKI A TE PUNI KŌKIRI

Ko ngā whāinga o tēnei wā a Te Puni Kōkiri mō tāna pou tarāwaho whakararu kōmitimiti, ko:

- Te whakatakoto ngā mahinga whakahaere whakararu hei mahi whakahaere tutuki ki te whanaketanga kaupapa here, te whakamahere rautaki me te pakihi, me ngā mahi whakahaere kaupapa hei whakapūmau ka kitea ka whakatikaina ngā whakararu take nui ki roto o Te Puni Kōkiri katoa; me
- Te whakapūmau kei te whakamōhiohia ki ngā rōpū whakahaere take nui ā-roto, e pewhea ana te whakahaere i a rātou, me

te hāngaitanga, te māhorahoratanga o ngā mahinga whakahaere whakararu.

I waenga i te tau 2006/07, i whakahaeretia te Komiti Whakahaere Whakararu me te Tātari Kaute, me tōna mahinga Arotake Kaute Ā-roto, hei wāhanga mātāmua tonu o tōna Pou Tarāwaho Whakahaere Whakararu.

Ko ngā whakararu take nui i tēnei wā, e hāngai pū ana ki tēnei Pānui Whāinga me ngā rautaki whakahaere whakararu pātata kua whakarārangitia ki runga i te rīpanga kei raro nei.

NGĀ WHAKARARU	RAUTAKI WHAKAHAERE
Kahore ngā honohononga kaiwhaiwāhi e hangaia i runga i nga huanga, me te runga i nga huanga, me te kōtiriti o ngā karere me ngā whanonga	- Whanaketanga haere tonu o ngā rautaki me ngā whakahaere honohononga - Whanaketanga haere tonu o ngā taputapu whakamohio
Kahore i te whakaū tētahi tirohanga whānui o ngā kōkiri kaupapa here e pā ana ki te Māori	- Whanaketanga o te Pou Tarāwaho Pūmanawa Nohopuku Māori hei taputapu whakamahi mā ētahi ake pokapū - Whanake ara aromatawai huanga, takawaenga pokapū, ki ētahi ake pokapū - Whanake rautaki whakahaere honohononga ki ngā iwi, hapū, me ngā whānau, e hāngai ana ki te whakamōhio i rātou hiahia mō te whanaketanga kaupapa here kāwanatanga
Kahore ngā rautaki whakahaumi i te aro atu ki ngā wahi kaha o te pūmanawa nohopuku	- Whakamahi i ngā matapae ōhanga hei whakamōhio mahere me ngā mahi hanga whakataunga kei mua - Whanake pou tarāwaho whakahaumi me te taura ki te whakapiri i ngā rawa ki runga i ngā rautaki take tuatahi - Kohikohi pārongo ki ngā taumata ā-motu, me ngā rohe, hei whakakaha ake ka herea ki ngā horopaki pakihi rautaki - Arotake i te pou tarāwaho whakahaumi kia kitea ngā whakahaumi kei te hōmai painga nui rawa atu
Kahore a Te Puni Kōkiri i te mōhio he aha ngā kaupapa kua tutuki e rātou i raro i a ratou mahinga me a rātou whakahaumitanga	- Whanake tohu mahinga mō te whakaine o te hāngaitanga me te kakama e pā ana ki te whakatutukitanga o ngā huanga - Whanake whakaritenga utu hāngaitanga mō āna mahinga - Ka aromatawaitia ngā whakaritenga huanga mō ngā rōpū Māori - Arotakenga takitahi o ngā whakahaumitanga kia taea e mātou te aroturuki i te whakapātanga o ngā mahinga ka whakaaro ake i ngā wāhi hei whakapai ake.

