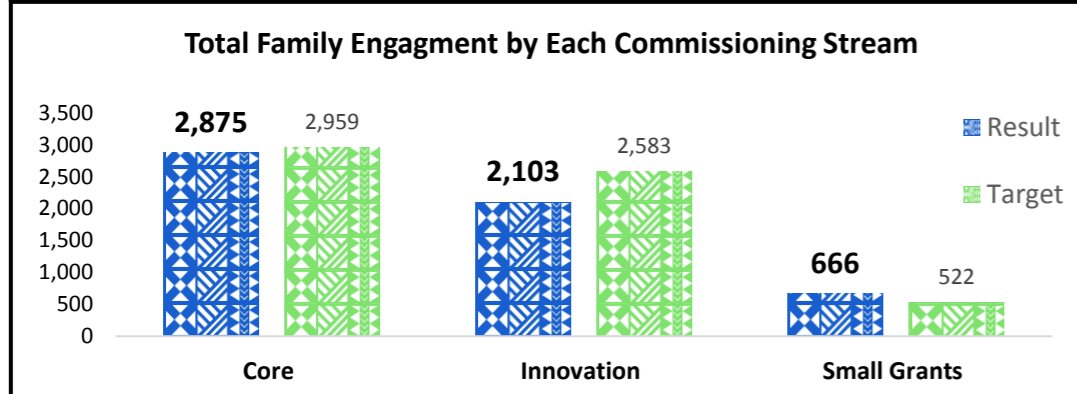


TOTAL FAMILY ENGAGEMENT



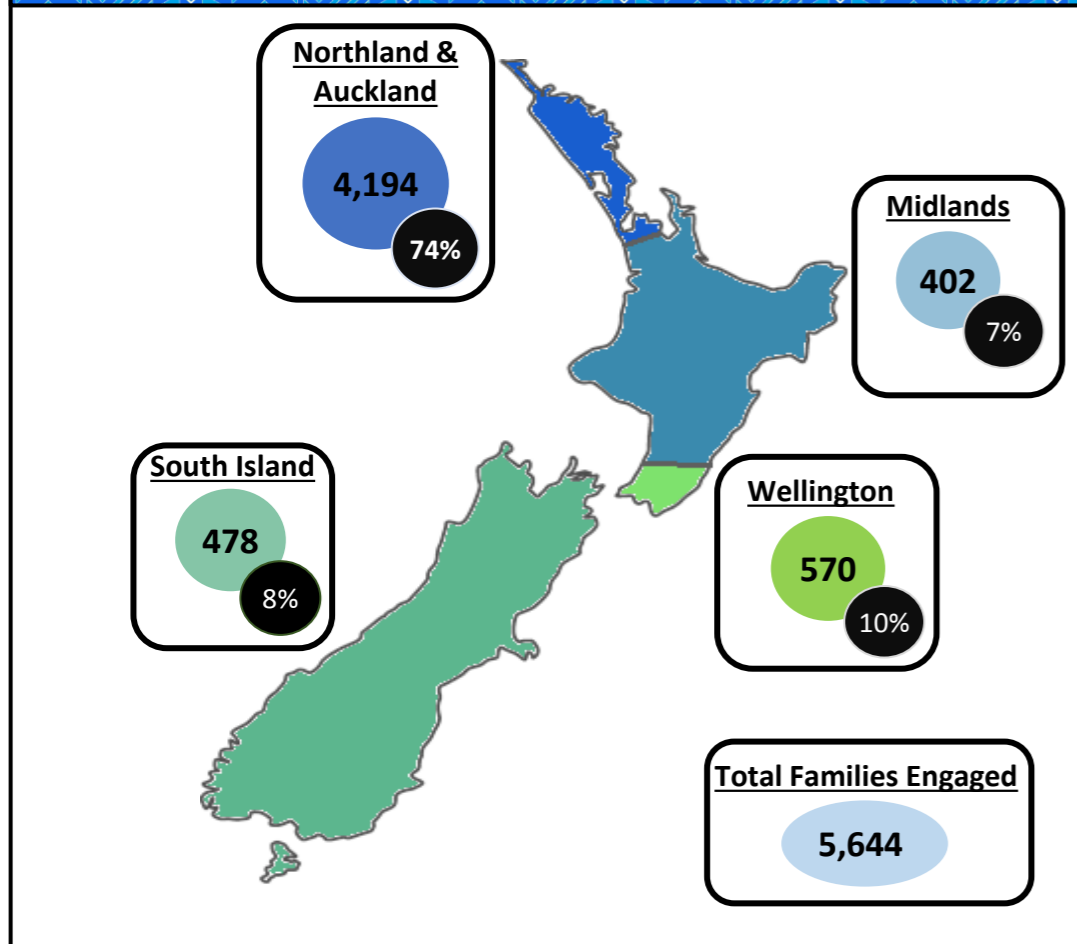
HIGHLIGHTS FOR THE QUARTER

+ Pasifika Futures Disaster Response Team responded to a crash on SH1 near Taupo involving two vehicles and eight passengers. Services co-ordinated included hospital care, victim support and financial assistance.

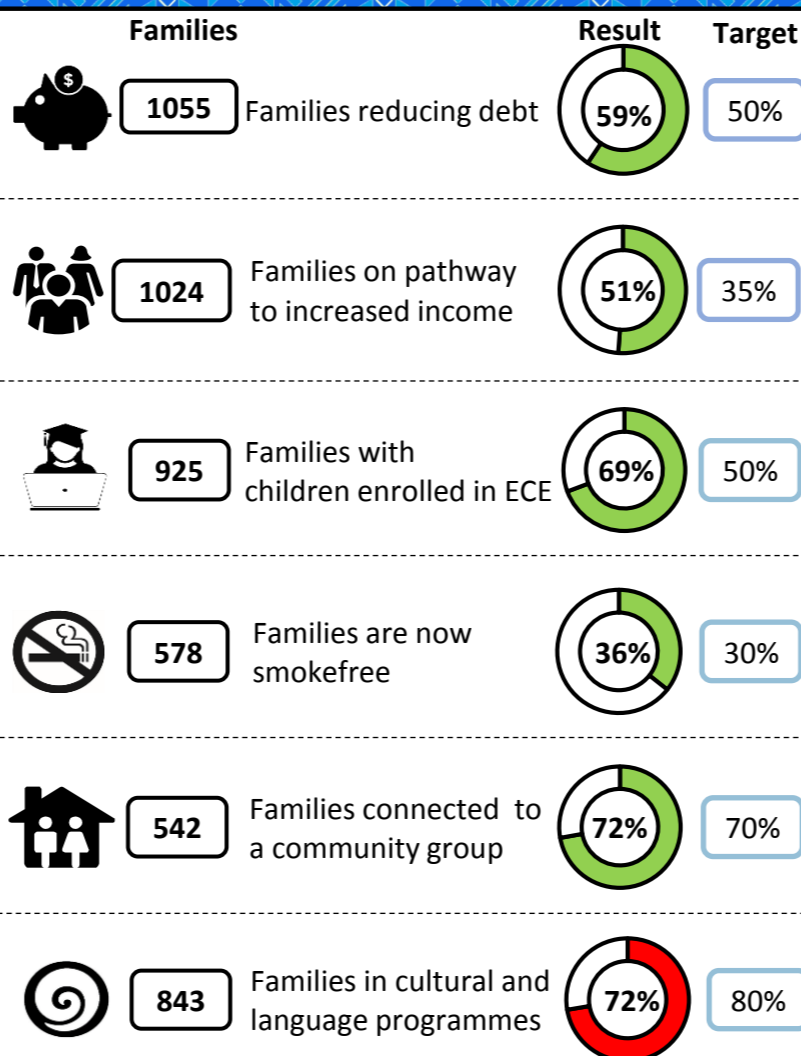
🤝 Pasifika Futures and Canterbury DHB undertook a data analysis workshop as a precursor to developing a collective vision of "Prosperous Healthy Pacific Families" in the south Island.

👤 14 Small Grants Partners are to be supported in FY 17/18, an increase of 4 on last year that will build on the success of this workstream in extending reach and awareness into communities with an ethnic specific focus.

ANNUAL FAMILY ENGAGEMENT BY REGION



COMMISSIONING FOR FAMILIES



CONTRIBUTION TO WHĀNAU ORA OUTCOMES

Core Commissioning	Innovation
<p>45% Proportion of families engaged in FY17/18 who are now able to meet basic living costs</p> <p>Families are financially independent</p>	<p>69 jobs created</p> <p>cidanz Cook Islands Development Agency New Zealand to make teiparanga whānau</p>
<p>921 The number of school leavers engaged in education, training or employment</p> <p>Families are becoming increasingly educated</p>	<p>498 students ranging from Year 1 to 13 enrolled in 2018 STEM programme</p> <p>Otago College</p>
<p>65% Proportion of families engaged in FY17/18 where all members are enrolled with a primary care provider</p> <p>Families are leading healthy lifestyles</p>	<p>60% of families have improved their housing conditions</p> <p>Wellington Tongan Leaders' Council</p>
<p>61% Proportion of families able to have a conversation in their native language</p> <p>Families are becoming community orientated</p>	<p>280 Students in highly skilled employment</p> <p>OCEANIA CAREER ACADEMY</p>

NOTES TO RESULTS

- Family engagement is at 93% of annual target.
- The majority of engaged families live in Auckland (71%), are Samoan (39%) or Tongan (25%) descent.
- Average family size is 5 members with 58% of families having 3-5 family members.

CASE STUDY (FAMILY STORY)

Family of four with two young children living in a garage. Suffering from financial stress, relying on WINZ and father with early stage lung cancer unable to work. Through navigator intervention the father received treatment from a health specialist and obtained a heavy goods vehicle license enabling him to work as a truck driver. The mother was provided with career guidance and found work at a Kindergarten. With Whānau Ora support the family moved into a rental home just before Christmas.

