

Māori Communities COVID-19 Fund – Phases 1, 2 & 3 – weekly update as at May 6 2022

Fund overview (Phases 1,2 & 3)

\$131.91m Total fund size across three phases

\$118.07m Total approved by Ministers, Omicron Approval Panel and Regional Directors
 ↑ \$1.19m from last report

138 proposals with **177** contracts to date

Of which:

\$116.73m Contracted with providers
 ↑ \$3.34m from last report

99 active contracts worth \$72.30m

69 completed contracts worth \$44.43m

9 approved proposals yet to have signed contracts worth \$1.34m

Phase 3 progress

\$8.26m Approved by Omicron Approval Panel (OAP) and Regional Directors
 ↑ \$1.19m from last report

46 proposals

Of which:

\$7.05m Funding currently under contract with providers
 ↑ \$1.33m from last report

38 contracts

\$5.88m Paid to providers

Phase 2 progress

\$39.23m Approved by Ministers
 No change from last report

46 proposals

Of which:

\$39.10m Funding currently under contract with providers
 ↑ \$2.01m from last report

45 contracts

\$29.05m Paid to providers

Phase 1 progress

\$70.58m Approved by Ministers and fully contracted
 No change from last report

46 proposals with **85** contracts (8 tranches)

Of which:

\$66.23m Paid to providers
 ↑ \$0.06m from last report

85 contracts

Ministerial and Agency weekly decisions update

- Phase 3 Week 7: Eight proposals were approved worth \$1.186m
- One proposal worth \$0.266m was approved by OAP
- Seven proposals worth \$0.920m were approved by Regional Directors
- OAP approved an additional \$0.260m from the departmental expense provision to support Karawhina initiatives.

MCCF Communications update

- Developing messaging for kaimahi and kaitono to prepare for completing fund activities
- Presenting the Karawhina Initiatives at the 2 day Iwi Communications Collective annual meeting in Rotorua.



Above: Ngā iwi O Taranaki Collective's team at one of their drive in testing centres.

Photo credit: Ngā iwi O Taranaki Collective Facebook



Above: The CEO of Tui Ora and his son keeping whānau well fed at one of Ngā iwi O Taranaki Collective's vaccination clinics held in Ōpunakē.

Photo credit: Ngā iwi O Taranaki Collective Facebook

Provider Spotlight: Ngā Iwi O Taranaki Collective – Phase 1

MCCF has contracted and fully paid \$2.652m in funding to Ngā Iwi O Taranaki Collective to support vaccination uptake for whānau in the Taranaki rohe.

Ngā iwi O Taranaki Collective are a community-based health and social services provider in Taranaki. They have been working collaboratively with key agencies, iwi and the broader Taranaki community to proactively develop initiatives aimed at increasing vaccination uptake while making sure that whānau feel safe and well informed. Their role has been critical to the wellbeing of whānau Māori in Taranaki.

To help boost vaccination rates in their rohe Ngā iwi O Taranaki Collective have trained a number of iwi members as vaccinators and testers; established a distribution network to supply hygiene packs to whānau and worked with iwi to maximise their response within the community. Ngā iwi O Taranaki Collective set up an 0800 number to help whānau under stress and the team proactively contacted a few thousand whānau to offer support.

Ngā iwi O Taranaki Collective along with Tui Ora held a number of successful walk-in vaccination clinics encouraging everyone to 'bring a mate and vaccinate'. These events included live music and activities to keep the whole whānau entertained, including visits from special guests like Tall Blacks legend Pero Cameron and Santa Claus.

The pūtea provided by the MCCF to Ngā iwi O Taranaki Collective has helped increase vaccination rates for all Māori (including Tamariki) in their rohe from 40% to 67% fully vaccinated.

Mahitahi Trust – Contracted Phase 2 Proposal

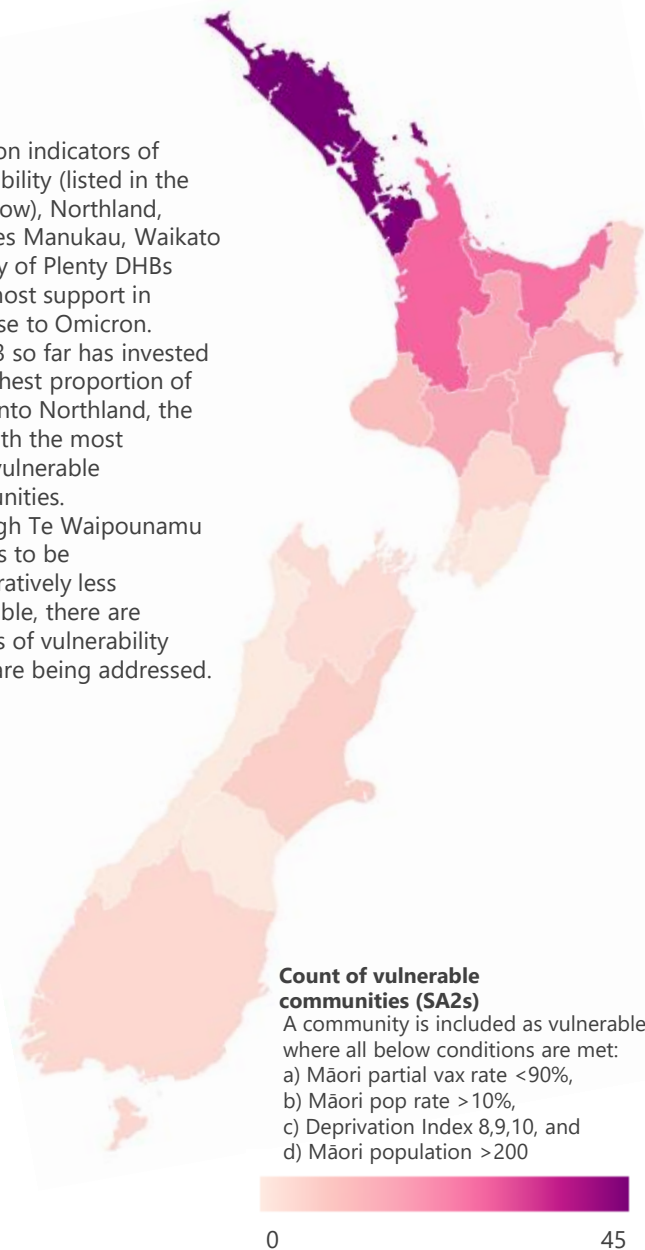
Ministers have approved this proposal worth \$0.158m to enable activities that will support whānau that suffer from mental health issues and addiction through COVID-19 within Counties Manukau.

Mahitahi Trust is a kaupapa Māori mental health and addictions service with more than 30 years of experience, intelligence, and success in improving the health outcomes of whānau whaiora and whānau whanui.

The pūtea provided by the MCCF to Mahitahi Trust will allow them to address the urgent unmet community needs that have escalated for whānau who are affected by COVID-19. This will be achieved by providing whānau with COVID-19 isolation care bags to those who have tested positive for COVID-19 and are required to self-isolate; are a contact in isolation; or are a close contact and have been required to self-isolate and become symptomatic.

Māori Communities COVID-19 Fund – Phases 1, 2 & 3 – Vulnerability index and investment by DHB region

Vulnerable communities by DHB Area May 3rd



Count of vulnerable communities (SA2s)
 A community is included as vulnerable where all below conditions are met:
 a) Māori partial vax rate <90%,
 b) Māori pop rate >10%,
 c) Deprivation Index 8,9,10, and
 d) Māori population >200

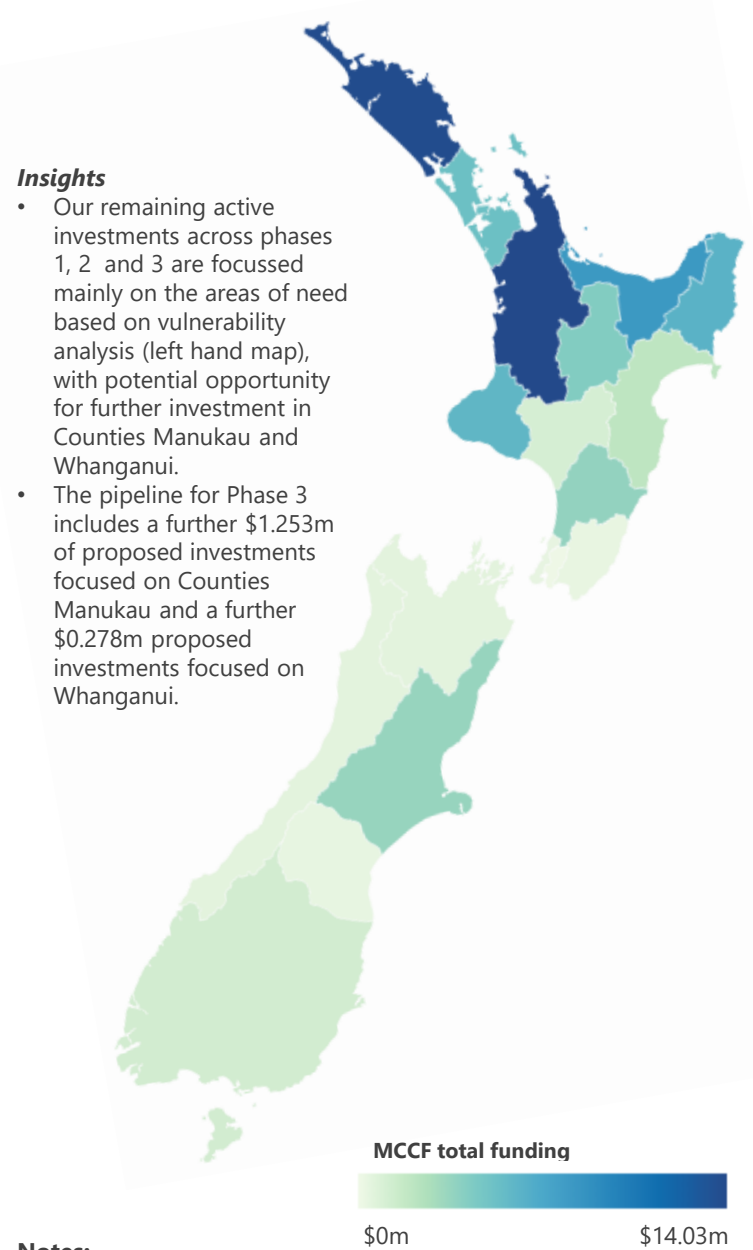
0 45

Māori Vaccination Data and MCCF Summary Table

DHB Area	Booster Dose 12+ %	Tamariki Dose 1 / Dose 2 %	Vulnerable Communities Coverage*	Phase 1 Investment \$m	Phase 2 Investment Approved \$m	Phase 3 Investment Approved \$m	Approved, not yet expired \$m
Northland	56%	27% / 6%	45 of 45	8.17	8.50	3.44	13.82
Auckland Metro	56%	38% / 13%	44 of 44	5.35	1.60	1.64	5.09
Waikato	52%	32% / 9%	27 of 27	13.60	2.54	0.46	14.03
Lakes	54%	29% / 8%	16 of 16	6.49	1.24	0.04	4.19
Bay of Plenty	52%	27% / 7%	20 of 25	3.76	6.48	0.26	7.98
Tairāwhiti	58%	45% / 13%	4 of 4	6.84	4.84	0.63	6.16
Taranaki	52%	32% / 11%	10 of 10	4.31	2.88	0.00	5.85
Hawkes Bay	55%	32% / 8%	13 of 13	2.51	1.36	0.57	1.93
MidCentral	57%	38% / 13%	4 of 4	2.72	3.12	0.48	3.59
Whanganui	58%	29% / 9%	14 of 15	2.84	1.00	0.00	1.00
Capital and Coast	66%	50% / 21%	0 of 0	0.93	0.28	0.00	0.28
Hutt Valley	60%	46% / 16%	0 of 1	0.52	0.00	0.00	0.00
Wairarapa	56%	36% / 11%	0 of 0	0.43	0.04	0.20	0.24
Nelson Marlborough	58%	39% / 13%	3 of 3	0.54	0.44	0.00	0.44
West Coast	60%	39% / 14%	0 of 0	0.11	0.46	0.00	0.46
Canterbury	61%	45% / 18%	6 of 6	0.99	3.15	0.44	3.45
South Canterbury	57%	42% / 11%	0 of 0	0.09	0.27	0.00	0.27
Southern	61%	41% / 16%	4 of 4	1.56	1.04	0.10	1.14
National Coverage	-	-	-	8.82	0.00	0.00	2.62
Total	56%	35% / 11%	210 of 217	\$70.58m	\$39.23m	\$8.26m	\$72.53m

*this column indicates the number of vulnerable communities within each DHB area, and the number where MCCF investments are approved and not yet expired.

Approved, not yet expired MCCF investments by DHB Area May 4th



MCCF total funding
 \$0m \$14.03m

Insights

- Based on indicators of vulnerability (listed in the key below), Northland, Counties Manukau, Waikato and Bay of Plenty DHBs need most support in response to Omicron.
- Phase 3 so far has invested the highest proportion of pūtea into Northland, the DHB with the most (21%) vulnerable communities.
- Although Te Waipounamu appears to be comparatively less vulnerable, there are pockets of vulnerability which are being addressed.

Insights

- Our remaining active investments across phases 1, 2 and 3 are focussed mainly on the areas of need based on vulnerability analysis (left hand map), with potential opportunity for further investment in Counties Manukau and Whanganui.
- The pipeline for Phase 3 includes a further \$1.253m of proposed investments focused on Counties Manukau and a further \$0.278m proposed investments focused on Whanganui.

Notes:

- 'Approved, not yet expired' investments include all approved investments yet to reach the contract end date
- Dollar figures are amounts approved or contracted through MCCF
- Auckland DHBs are aggregated
- Funding share for proposals covering multiple DHBs is based on vaccination rates, and should be considered an estimate
- Vaccination data = 4th May
- All vaccination rate data sourced from daily MOH updates
- 'Overseas / Unknown' included in total vaccination percentages



Te Puni Kōkiri
 MINISTRY OF MĀORI DEVELOPMENT

