

Māori Communities COVID-19 Fund – Phases 1, 2 & 3 – weekly update as at April 22 2022

Fund overview (Phases 1, 2 & 3)

\$131.91m Total fund size across three phases

\$116.34m Total approved by Ministers, Omicron Approval Panel and Regional Directors
 ↑ \$1.05m from last report

124 proposals with 163 contracts to date

Of which:

\$111.96m Contracted with providers
 ↑ \$7.62m from last report

82 active contracts worth \$67.53m
 69 completed contracts worth \$44.43m

12 approved proposals yet to have signed contracts worth \$4.38m

Phase 3 progress

\$6.36m Approved by Omicron Approval Panel (OAP) and Regional Directors
 ↑ \$1.05m from last report

31 proposals

Of which:

\$3.08m 4 approved proposals valued at \$0.20m - \$1.00m

\$3.28m 27 approved proposals valued under \$0.20m

\$5.45m Funding currently under contract with providers
 24 contracts

Phase 2 progress

\$39.39m Approved by Ministers
 No change from last report

47 proposals

Of which:

\$35.93m Funding currently under contract with providers
 ↑ \$5.72m from last report

42 contracts

Phase 1 progress

\$70.58m Approved by Ministers and fully contracted
 No change from last report

46 proposals with 85 contracts (8 tranches)

Of which:

\$65.47m Paid to providers
 No change from last report

85 contracts

Ministerial and Agency weekly decisions update

- Phase 3 Week 5: Six proposals were approved by Regional Director's worth \$1.051m.
- Total fund size altered to reflect reduced demand for support to commence and complete activities by 30 June.

MCCF Communications update

- Identifying ways to align the MCCF and Karawhiua programmes to support Karawhiua initiatives.
- Developing key messaging around fund size and impact on vulnerable communities from cessation of MCCF activities at 30 June.



Above: The Te Korowai team celebrating a successful day at one of their vaccination clinics held in Waihi.
 Photo credit: Te Korowai Trust Hauora o Hauraki Incorporated Facebook



Above: Whānau from Paeroa happy to receive their vaccine without having to enter a building.
 Photo credit: Te Korowai Trust Hauora o Hauraki Incorporated Facebook



Above: Te Korowai taking their mobile vaccination and testing services out to communities in need.
 Photo credit: Te Korowai Trust Hauora o Hauraki Incorporated Facebook

Provider Spotlight: Te Korowai Hauora o Hauraki Incorporated – Phase 1

MCCF has contracted and fully paid \$0.600m in funding to Te Korowai Hauora o Hauraki Incorporated (Te Korowai) to support vaccination uptake for whānau in Whitianga, Coromandel, Thames South, Paeroa, Waihi, Te Aroha and Whangamatā.

Te Korowai, in collaboration with marae, whānau, hapū and iwi were involved in a number of initiatives in the response to COVID-19 which included; providing mobile vaccination and testing services within their community, especially to those in need; ensuring there were drive through centres at all vaccination clinics for people that did not want to go inside buildings; leading a summer surge wellbeing program over the summer holiday period; and purchasing health equipment such as pulse oximeters and thermometers to supply to whānau in preparation for the rise in COVID-19 cases.

Te Korowai developed a rourou kete plan for whānau in their community to them help understand the requirements for home isolation and an information hub to manage korero between whānau and Te Korowai kaimahi. They also developed a communications plan to ensure there was a clear way of providing messages to whānau through social media and their website.

Te Korowai implemented a piki te ora team to help whānau with chronic health conditions to ensure they did not lose sight of these conditions and the complications that could develop if left unchecked. Te Korowai also continued to provide community-based clinics at several marae as part of the wider project.

The pūtea provided by the MCCF to Te Korowai has helped support 16,444 vaccinations in their rohe.

Ngāti Whātua Eke Panuku – Phase 2 proposal

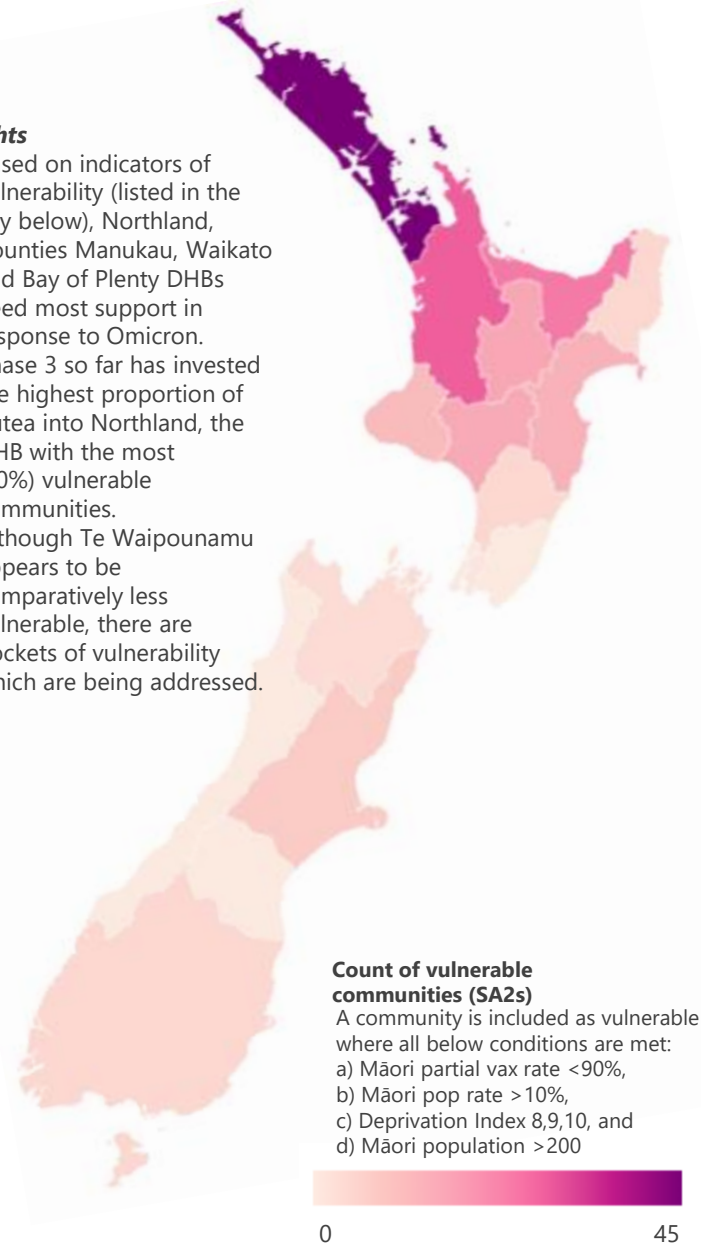
Ministers have approved this proposal worth \$0.128m to enable activities that will support whānau through COVID-19 within the Ngāti Whātua rohe.

With the pūtea provided by MCCF, Ngāti Whātua Eke Panuku will work with iwi groups across the rohe of Ngāti Whātua to support whānau in isolation. They will do this through the set-up of a mobile COVID-19 support team that will travel to rural and isolated areas.

The area also has a high and unmet demand for mental health resources which this initiative will help to address by deploying mental health resources to support whānau affected by the impact of COVID-19.

Māori Communities COVID-19 Fund – Phases 1, 2 & 3 – Vulnerability index and investment by DHB region

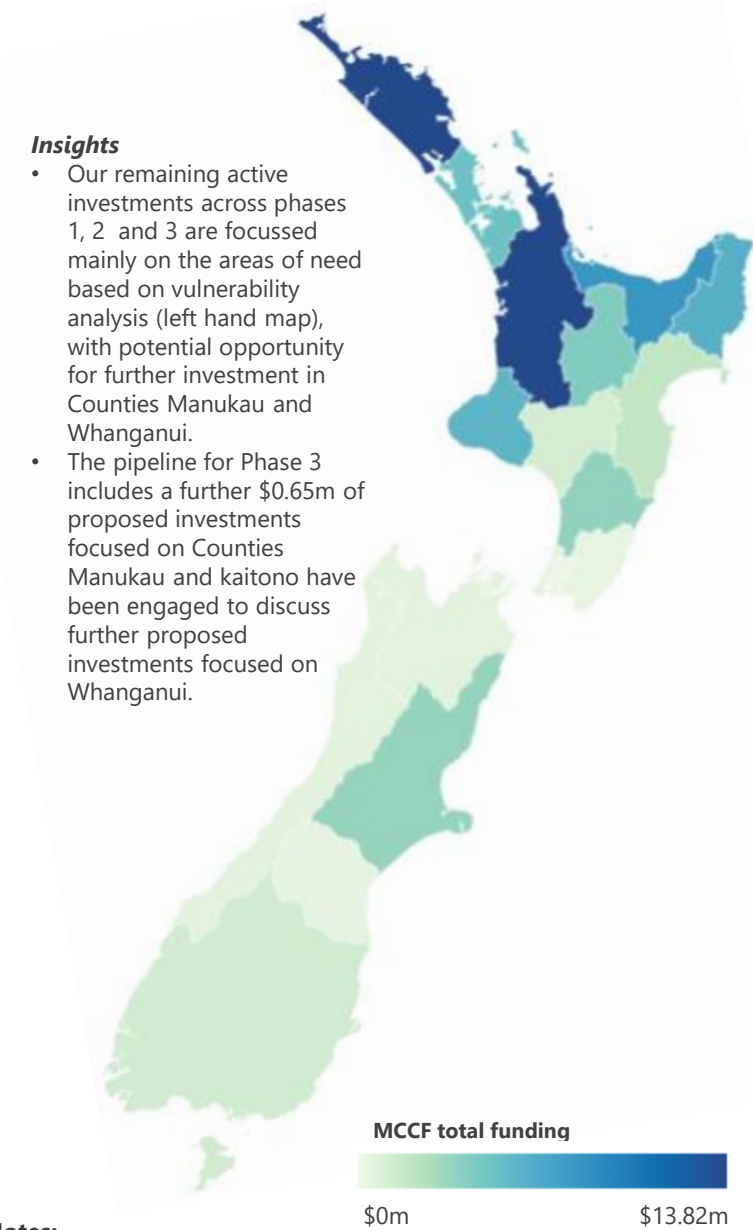
Vulnerable communities by DHB Area April 19th



Māori Vaccination Data and MCCF Summary Table

DHB Area	Dose 1 / Dose 2 %	Vulnerable communities coverage*	MCCF Phase 1 Investment \$m	MCCF Phase 2 Investment Approved \$m	MCCF Phase 3 Investment Approved \$m	Approved, not yet expired \$m
Northland	87% / 83%	45 of 45	8.17	8.50	3.44	13.82
Auckland Metro	92% / 89%	45 of 45	5.35	1.60	0.63	4.90
Waikato	91% / 88%	28 of 28	13.60	2.54	0.22	13.79
Lakes	90% / 87%	16 of 16	6.49	1.24	0.00	4.15
Bay of Plenty	88% / 84%	19 of 24	3.76	6.64	0.00	8.04
Tairāwhiti	91% / 87%	4 of 4	6.84	4.84	0.63	6.16
Taranaki	91% / 88%	11 of 11	4.31	2.88	0.00	5.85
Hawkes Bay	91% / 88%	13 of 13	2.51	1.36	0.37	1.73
MidCentral	95% / 92%	4 of 4	2.72	3.12	0.48	3.59
Whanganui	88% / 85%	14 of 15	2.84	1.00	0.00	1.00
Capital and Coast	96% / 94%	0 of 0	0.93	0.28	0.00	0.28
Hutt Valley	94% / 92%	0 of 1	0.52	0.00	0.00	0.00
Wairarapa	94% / 91%	0 of 0	0.43	0.04	0.20	0.24
Nelson Marlborough	91% / 88%	3 of 3	0.54	0.44	0.00	0.44
West Coast	91% / 88%	0 of 0	0.11	0.46	0.00	0.46
Canterbury	96% / 94%	7 of 7	0.99	3.15	0.30	3.45
South Canterbury	93% / 90%	0 of 0	0.09	0.27	0.00	0.27
Southern	95% / 92%	4 of 4	1.56	1.04	0.10	1.14
National Coverage	-	-	8.82	0.00	0.00	2.62
Total	91% / 88%	213 of 220	\$70.58m	\$39.39m	\$6.36m	\$71.91m

Approved, not yet expired MCCF investments by DHB Area April 20th



Insights

- Our remaining active investments across phases 1, 2 and 3 are focussed mainly on the areas of need based on vulnerability analysis (left hand map), with potential opportunity for further investment in Counties Manukau and Whanganui.
- The pipeline for Phase 3 includes a further \$0.65m of proposed investments focused on Counties Manukau and kaitono have been engaged to discuss further proposed investments focused on Whanganui.

Notes:

- 'Approved, not yet expired' investments include all approved investments yet to reach the contract end date
- Dollar figures are amounts approved or contracted through MCCF
- Auckland DHBs are aggregated
- Funding share for proposals covering multiple DHBs is based on vaccination rates, and should be considered an estimate
- Vaccination data = 20 April
- All vaccination rate data sourced from daily MOH updates
- 'Overseas / Unknown' included in total vaccination percentages

*this column indicates the number of vulnerable communities within each DHB area, and the number where MCCF investments are approved and not yet expired.



Te Puni Kōkiri
MINISTRY OF MĀORI DEVELOPMENT

