

Māori Communities COVID-19 Fund – Phases 1, 2 & 3 – weekly update as at April 1 2022

Fund overview (Phases 1,2 & 3)

\$160.05m Total fund size across three phases

\$113.59m Total approved by Ministers, Omicron Approval Panel and Regional Directors
 ↑ \$12.01m from last report

▶ Of which:

\$93.09m Contracted with providers
 ↑ \$0.61m from last report

49 active contracts worth \$58.86m

63 completed contracts worth \$34.23m

29 approved proposals yet to have signed contracts worth \$20.50m

Phase 3 progress

\$3.66m Approved by Omicron Approval Panel (OAP) and Regional Directors
 ↑ \$1.12m from last report

▶ Of which:

\$3.08m 4 approved proposals valued at \$0.20m - \$1.00m

\$0.58m 6 approved proposals valued under \$0.20m

\$1.56m Funding currently under contract with providers
 2 contracts

Phase 2 progress*

\$37.89m Approved by Ministers
 ↑ \$10.09m from last report

▶ Of which:

\$19.48m Funding currently under contract with providers
 No change from last report

25 contracts

* These figures do not include the \$1.5m adjustment for Maniapoto Māori Trust Board

Phase 1 progress*

\$72.08m Approved by Ministers and fully contracted
 No change from last report

▶ Of which:

\$64.47m Paid to providers
 ↑ \$1.24m from last report

85 contracts

* These figures do not include the \$1.5m adjustment for Maniapoto Māori Trust Board

- Ministerial and Agency weekly decisions update**
- Phase 2 Tranche 4: Signed copies of approvals received from all Ministers
 - Approval to transfer \$1.5m from Phase 1 to Phase 2 for Maniapoto Māori Trust Board received from all Ministers.
 - Phase 3 Tranche 2: One proposal was approved by the Omicron Approval Panel on 25 March worth \$0.541m. Six proposals were approved by Regional Directors worth \$0.577m

- MCCF Communications update**
- New content is being finalised for a digital marketing campaign – 2 Northland-focused videos and 2 videos of tamariki doing RAT tests.
 - A new Memorandum of Understanding with Te Hīringa Hauora is being finalised to continue to co-deliver the Karawhiua campaign, in light of new COVID-19 Māori Response to Omicron funding.
 - Resource information for kaitono and kaimahi is being finalised.



Above: One of Ngāti Ruanui 'Vax 'N' Yaks' pop up vaccination clinics.

Photo credit: Ngāti Ruanui



Above: The Ngāti Ruanui team preparing to deliver sanitation packs to whānau.

Photo credit: Ngāti Ruanui Facebook

Provider Spotlight: Ngāti Ruanui – Phase 1

MCCF has contracted \$1.022m in funding to Ngāti Ruanui to assist with the response to COVID-19 and to lift vaccination rates in the Taranaki rohe. Ngāti Ruanui has achieved this through the delivery of essential services to the community and developing a communication strategy with a key focus on helping and leading people through the pandemic and protecting their whakapapa.

Ngāti Ruanui have rolled out a successful 'Vax 'N' Yaks' model of talking and vaccinating. This included a series of clinics for first, second and booster shots. There has been a considerable lift in vaccination rates through all age groups, in particular rangatahi, vaccination rates.

Other activities carried out by Ngāti Ruanui include education and communication to encourage whānau to get vaccinated; removing barriers and providing real-time assistance for whānau through health and welfare checks; delivering care packages with essential goods and sanitation items to whānau and kaumatua particularly in remote areas; helping whānau develop resilience for resurgence planning and; setting up additional drive-thru saliva testing stations due to an increase in demand.

The pūtea provided by the MCCF to Ngāti Ruanui helped deliver over 800 first vaccinations and over 200 second vaccinations.

Te Kāhui Hauora o Te Waipounamu – approved Phase 2 proposal

Ministers have approved this proposal worth \$2.530m to enable activities that will support and protect approximately 4,000 whānau within the Te Waipounamu region.

The pūtea provided by the MCCF to Te Kāhui Hauora o Te Waipounamu will enable their partners to drive a Māori led response to support whānau to protect their communities against COVID-19 and in doing so increase the resilience of Māori communities.

Te Kāhui Hauora o Te Waipounamu will develop and disseminate information in different ways to ensure a wider reach including online webinars, information booklets and facilitating whānau planning workshops so that each whānau can develop their own response plan based on their unique circumstances.

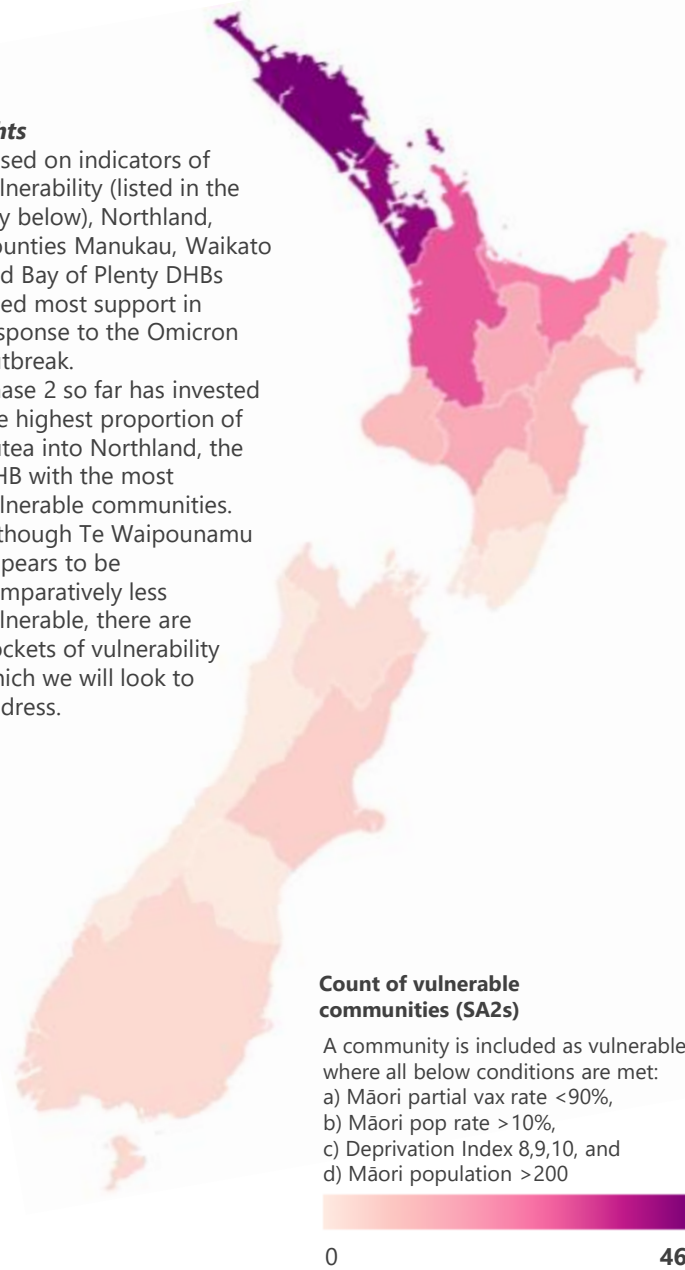
Te Kāhui Hauora o Te Waipounamu will ensure that Te Kāhui providers are supported to respond directly to the increasing needs of whānau due to COVID-19 through the establishment of a centralised operations centre which will liaise and coordinate between partners, Government and Ministries to ensure there is a cohesive and robust support system for whānau to meet and overcome the challenges of COVID-19.

Māori Communities COVID-19 Fund – Phases 1, 2 & 3 – Vulnerability index and investment by DHB region

Vulnerable communities by DHB Area March 29th

Insights

- Based on indicators of vulnerability (listed in the key below), Northland, Counties Manukau, Waikato and Bay of Plenty DHBs need most support in response to the Omicron outbreak.
- Phase 2 so far has invested the highest proportion of pūtea into Northland, the DHB with the most vulnerable communities.
- Although Te Waipounamu appears to be comparatively less vulnerable, there are pockets of vulnerability which we will look to address.



Māori Vaccination Data and MCCF Summary Table

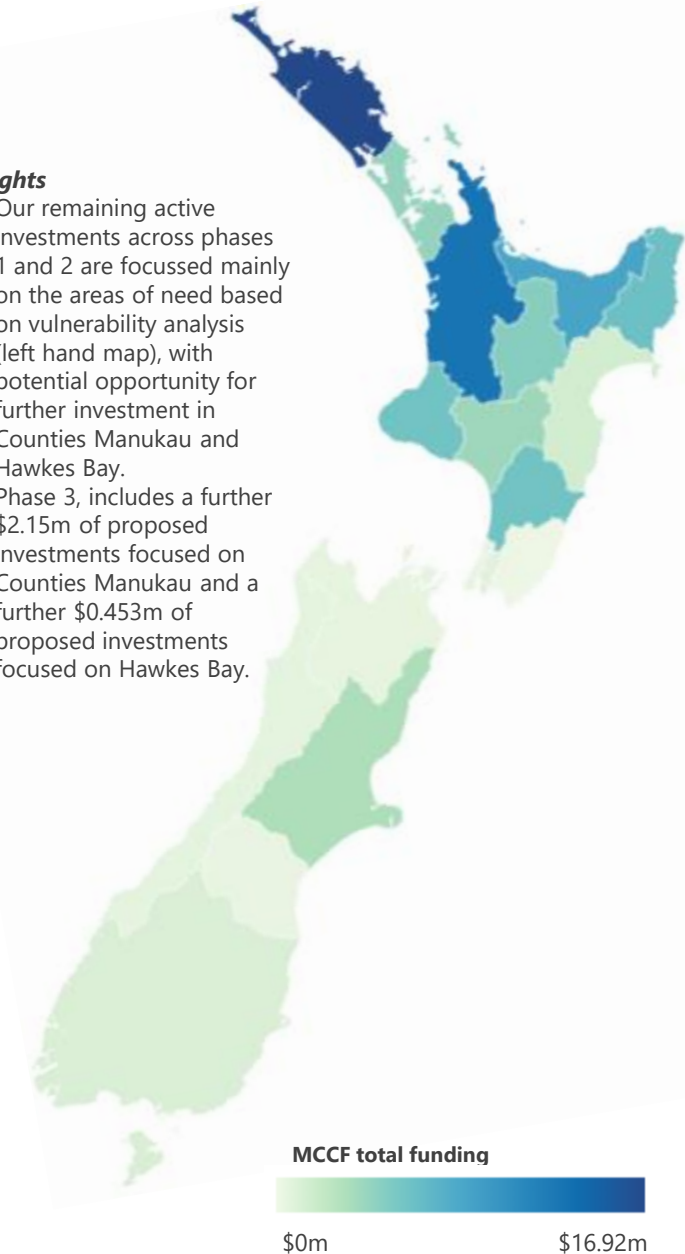
DHB Area	Dose 1 / Dose 2 %	Vulnerable communities coverage*	MCCF Phase 1 Investment	MCCF Phase 2 Investment Approved \$m	MCCF Phase 3 Investment Approved \$m	Approved, not yet expired \$m
Northland	87% / 83%	46 of 46	8.17	8.50	3.08	16.92
Auckland Metro	92% / 89%	43 of 43	5.35	1.60	0.00	4.26
Waikato	91% / 88%	19 of 30	15.1	1.04	0.00	12.96
Lakes	90% / 87%	15 of 15	6.49	1.24	0.00	4.83
Bay of Plenty	88% / 84%	22 of 24	3.76	6.64	0.00	8.57
Tairāwhiti	91% / 87%	4 of 4	6.84	4.84	0.58	6.11
Taranaki	91% / 88%	11 of 11	4.31	2.88	0.00	5.85
Hawkes Bay	91% / 88%	9 of 11	2.51	1.36	0.00	1.36
MidCentral	95% / 92%	4 of 4	2.72	3.12	0.00	5.84
Whanganui	88% / 85%	14 of 15	2.84	1.00	0.00	3.84
Capital and Coast	96% / 94%	0 of 0	0.93	0.28	0.00	0.28
Hutt Valley	94% / 92%	1 of 1	0.52	0.00	0.00	0.52
Wairarapa	94% / 91%	0 of 0	0.43	0.04	0.00	0.04
Nelson Marlborough	91% / 88%	3 of 3	0.54	0.44	0.00	0.44
West Coast	90% / 88%	0 of 0	0.11	0.46	0.00	0.46
Canterbury	96% / 94%	6 of 6	0.99	3.15	0.00	3.15
South Canterbury	93% / 90%	0 of 0	0.09	0.27	0.00	0.27
Southern	94% / 92%	4 of 4	1.56	1.04	0.00	1.04
National Coverage	-	-	8.82	0.00	0.00	2.62
Total	91% / 88%	201 of 217	\$72.08m	\$37.89m	\$3.66m	\$79.37m

*this column indicates the number of vulnerable communities within each DHB area, and the number where MCCF investments are approved and not yet expired.

Approved, not yet expired MCCF investments by DHB Area March 31st

Insights

- Our remaining active investments across phases 1 and 2 are focussed mainly on the areas of need based on vulnerability analysis (left hand map), with potential opportunity for further investment in Counties Manukau and Hawkes Bay.
- Phase 3, includes a further \$2.15m of proposed investments focused on Counties Manukau and a further \$0.453m of proposed investments focused on Hawkes Bay.



Notes:

- 'Approved, not yet expired' investments include all approved investments yet to reach the contract end date
- Dollar figures are amounts approved or contracted through MCCF
- Auckland DHBs are aggregated
- Funding share for proposals covering multiple DHBs is based on vaccination rates, and should be considered an estimate
- Vaccination data = 30 March, rate of change since 23 March
- All vaccination rate data sourced from daily MOH updates
- 'Overseas / Unknown' included in total vaccination percentages