

Māori Communities COVID-19 Fund – Phases 1, 2 & 3 – weekly update as at March 18 2022

Fund overview (Phases 1,2 & 3)

\$160.05m Total fund size across three phases

\$99.07m Total approved by Ministers
No change from last report
79 proposals with 118 contracts to date

Of which:

\$91.48m Contracted with providers
51 active contracts worth \$59.40m
58 completed contracts worth \$32.08m
9 approved proposals yet to have signed contracts worth \$7.60m

Phase 2 progress

\$26.99m Approved by Ministers
No change from last report
33 proposals

Of which:

\$19.40m Funding currently under contract with providers
24 contracts
14 proposals (tranche 4) pending Ministerial approval worth \$11.05m

Phase 1 progress

\$72.08m Approved by Ministers
No change from last report
46 proposals with 85 contracts (8 tranches)

Of which:

\$72.08m Funding contracted with providers
No change from last report
85 contracts

\$59.00m Paid to providers
85 contracts
No change from last report
↑ \$1.02m from last report

- Ministerial and Agency weekly decisions update**
- Phase 2 Tranche 3: Signed copies of approval from Ministers' Davis, Jackson & Henare. Approval still to come from Minister Robertson.
 - Phase 2 Tranche 4: Signed copies of approval received from Ministers' Davis & Jackson. Approval still to come from Ministers' Robertson & Henare.
 - Omicron Approvals Panel have met and approved three proposals for MCCF - Omicron.

- MCCF Communications update**
- A web story, web page updates and communications to staff and stakeholders explaining the focus of the Omicron phase are being developed.
 - Recruitment and induction of new staff into the Karawhiua campaign team is in progress as well as the website refresh.
 - Karawhiua was announced as a finalist in two categories for the [Axis Awards 2022](#) for its COVID-19 vaccination Out-of-Home advertising, focused on co-branded billboards with iwi.



Above: Tamariki receiving prizes as they spin to win at one of the pop up vaccination centres set up by Turanga Health.

Photo credit: Turanga Health Facebook page



Above: Minister Henare handing our Fry Bread to the whanau of Turanga at one of their pop up vaccination centres as part of Fry Bread Friday.

Photo credit: Turanga Health Facebook page



Above: An example of Turanga Health's advertising to encourage whānau to get vaccinated.

Photo credit: Turanga Health Facebook page

Provider Spotlight: Turanga Health – Phase 1

MCCF has contracted and fully paid \$1.000m in funding to Turanga Health to help boost vaccination rates in Tairāwhiti as part of the COVID-19 response in their rohe.

Turanga Health encouraged the community to protect their whānau and 'be a doer! Karawhiua.' by getting vaccinated at one of the 152 pop up vaccination centres they offered. Drive through vaccination clinics were held at reserves, Marae and at kura where music and kai were on offer to acknowledge whānau for being proactive about protecting their hauora. Fry Bread Fridays were introduced for anyone that got vaccinated on a Friday and Tamariki that received their vaccination could spin the wheel to win prizes.

To spread the word Turanga Health delivered real time messaging to promote their events through their social media and other Māori media platforms. They also engaged in interviews with TV1, TV3, Māori TV, Radio NZ, Turanga FM and Gisborne Herald to highlight the vaccination approach and share the experience enjoyed by whānau.

To help with the large number of vaccination centres run by Turanga Health, 10 additional Kaiawhina were trained as vaccinators to ensure they could keep up with demand.

The pūtea provided by the MCCF to Turanga Health helped assist in the delivery of over 13,000 vaccinations in Tairāwhiti.

Ngāti Pāhauwera Development Trust Ltd – approved Phase 2 proposal

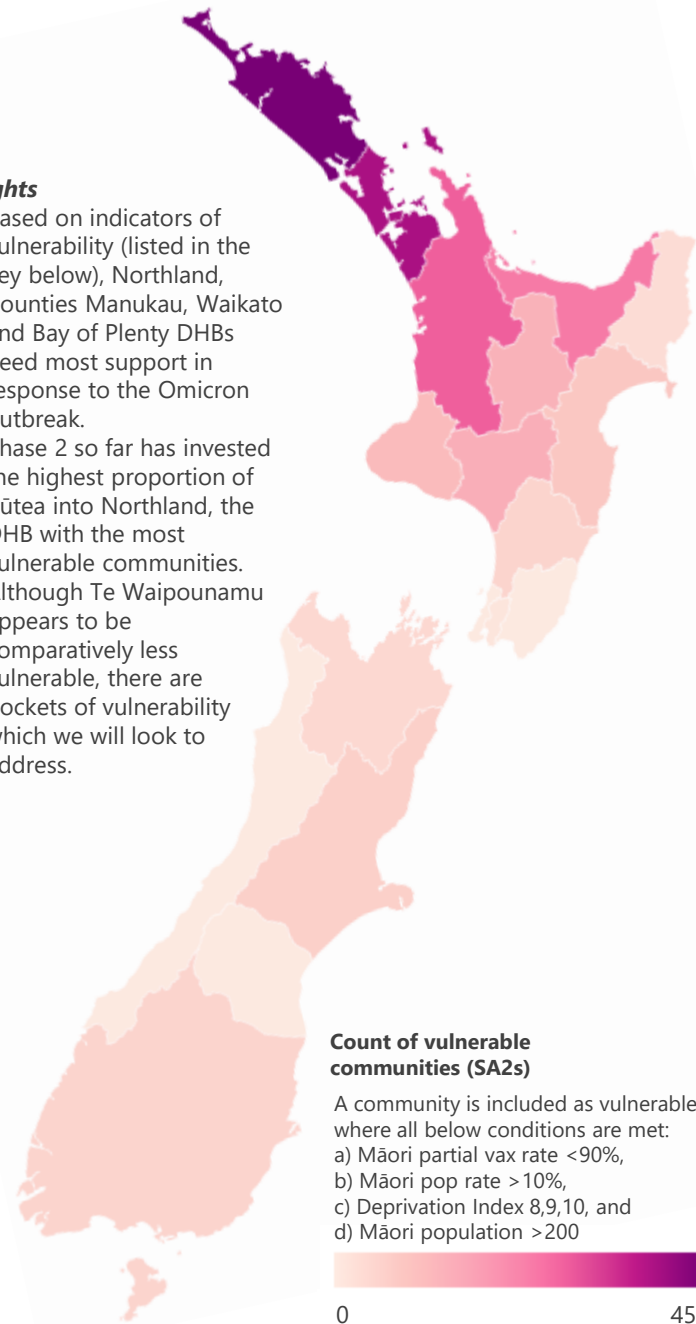
Ministers have approved this proposal worth \$0.350m to support the COVID-19 response, recovery and resilience for rurally isolated communities within the Hawkes Bay.

The areas Ngāti Pāhauwera Development Trust will support through this proposal have a number of vulnerability factors including poor quality housing, lack of access to communications and gang-related environments. Vaccinations in these areas are lower than other parts of the Hawkes Bay and so this proposal significantly focusses on being able to respond to those at a higher risk of harm from contracting COVID-19.

Ngāti Pāhauwera Development Trust have a comprehensive plan to help community members who must isolate. This includes preparing and distributing isolation kits, as well as plans for a support network, including collecting relevant household information about whānau and assessing their vulnerability.

Māori Communities COVID-19 Fund – Phases 1 & 2 – Vulnerability index and DHB investment

Vulnerable communities by DHB Area March 15th



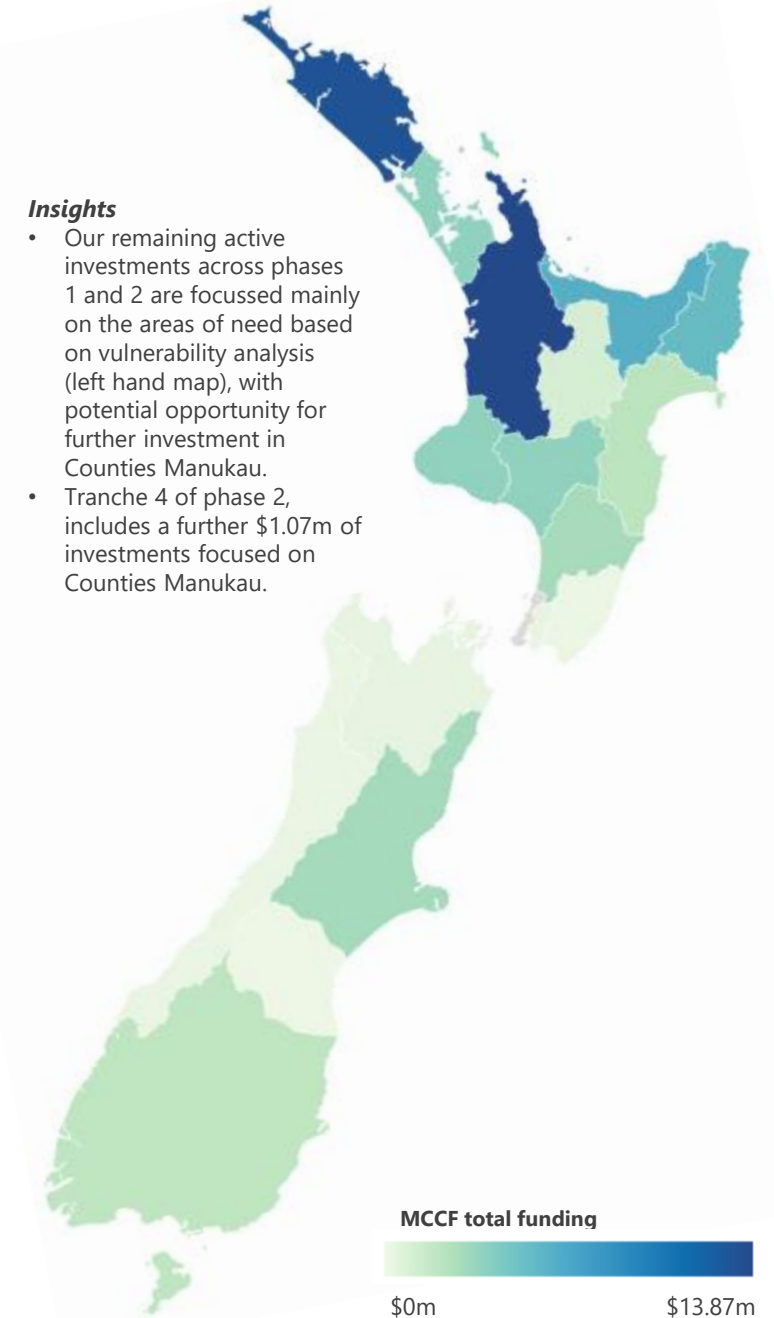
Insights

- Based on indicators of vulnerability (listed in the key below), Northland, Counties Manukau, Waikato and Bay of Plenty DHBs need most support in response to the Omicron outbreak.
- Phase 2 so far has invested the highest proportion of pūtea into Northland, the DHB with the most vulnerable communities.
- Although Te Waipounamu appears to be comparatively less vulnerable, there are pockets of vulnerability which we will look to address.

Māori Vaccination Data and MCCF Summary Table

DHB Area	Dose 1 / Dose 2 %	Vulnerable communities coverage*	MCCF Phase 1 Investment Approved \$m	MCCF Phase 2 Investment Approved \$m	Approved, not yet expired \$m
Northland	87% / 83%	45 of 45	8.17	7.79	13.14
Auckland Metro	92% / 89%	39 of 39	5.35	0.66	3.86
Waikato	92% / 88%	20 of 28	15.10	1.04	13.87
Lakes	90% / 87%	12 of 13	6.49	0.20	1.26
Bay of Plenty	88% / 84%	20 of 24	3.76	4.50	6.43
Tairāwhiti	91% / 87%	3 of 3	6.84	4.84	5.53
Taranaki	91% / 88%	11 of 11	4.31	0.87	3.84
Hawkes Bay	91% / 88%	8 of 8	2.51	0.35	2.28
MidCentral	95% / 92%	5 of 5	2.72	0.36	3.08
Whanganui	88% / 85%	14 of 14	2.84	1.00	3.84
Capital and Coast	96% / 94%	0 of 0	0.93	0.00	0.00
Hutt Valley	94% / 92%	1 of 1	0.52	0.00	0.52
Wairarapa	94% / 90%	0 of 0	0.43	0.04	0.37
Nelson Marlborough	92% / 88%	4 of 4	0.54	0.44	0.58
West Coast	91% / 88%	0 of 0	0.11	0.46	0.46
Canterbury	96% / 94%	6 of 6	0.99	3.15	3.15
South Canterbury	93% / 90%	0 of 0	0.09	0.27	0.31
Southern	94% / 91%	5 of 5	1.56	1.04	2.14
National Coverage	-	-	8.82	0.00	2.35
Total	91% / 88%	193 of 206	\$72.08m	\$26.99	\$67.00

Approved, not yet expired MCCF investments by DHB Area March 17th



Insights

- Our remaining active investments across phases 1 and 2 are focussed mainly on the areas of need based on vulnerability analysis (left hand map), with potential opportunity for further investment in Counties Manukau.
- Tranche 4 of phase 2, includes a further \$1.07m of investments focused on Counties Manukau.

Notes:

- 'Approved, not yet expired' investments include all approved investments yet to reach the contract end date
- Dollar figures are amounts approved or contracted through MCCF
- Auckland DHBs are aggregated
- Funding share for proposals covering multiple DHBs is based on vaccination rates, and should be considered an estimate
- Vaccination data = 16 March, rate of change since 10 March
- All vaccination rate data sourced from daily MOH updates
- 'Overseas / Unknown' included in total vaccination percentages

*this column indicates the number of vulnerable communities within each DHB area, and the number where MCCF investments are approved and not yet expired.



Te Puni Kōkiri
MINISTRY OF MĀORI DEVELOPMENT

