

# Māori Communities COVID-19 Fund – Phases 1 & 2 – weekly update as at February 18 2022

**Fund overview (Phases 1 & 2)**

**\$120m** Total fund size across two phases

**\$87.79m** Total approved by Ministers  
No change from last report  
58 proposals with 97 contracts to date

Of which:  
**\$73.58m** Contracted with providers  
53 active contracts worth \$41.92m  
9 contracts yet to be signed worth \$14.21m  
35 completed contracts worth \$17.46m

**Phase 2 progress**

**\$15.71m** Approved by Ministers  
No change from last report  
12 proposals

Of which:  
**\$1.50m** Funding currently under contract with providers  
↑ \$1.50m from last report  
3 contracts

13 proposals (tranche 2) worth **\$3.97m** are pending Ministerial approval

**Phase 1 progress**

**\$72.08m** Approved by Ministers  
No change from last report  
46 proposals with 85 contracts (8 tranches)

Of which:  
**\$72.08m** Funding contracted with providers  
No change from last report  
85 contracts

**\$57.16m** Paid to providers  
↑ \$1.93m from last report  
85 contracts

- Weekly progress update**
- 13 proposals in Tranche 2 of Phase 2 have been submitted to Ministers, worth \$3.97m.
  - Further Phase 2 proposals (tranche 3) will be submitted to Senior Officials February 22, and due to Ministers 23 February.
  - Our first three Phase 2 contracts have been signed, worth \$1.502m, along with an initial payment of \$0.5m to Waiariki Mentoring Trust.

- MCCF Communications update**
- Providing draft release, talking points and Q&A as part of the package supporting the Cabinet paper recommending additional Omicron support for Māori, including additional MCCF funding.
  - The Karawhiua team has engaged with MOH on their development of a Māori-focused booster campaign launched this week.
  - A refreshed Karawhiua digital campaign starts February 18.



Above and below: Ira Dot Fairies from the Ira Dot campaign, supported by Ngā Puna o Waiorea. Kaimahi worked to provide information on vaccinations and encourage whānau to 'get dotted'.

Photo credit: Ngāti Whātua o Ōrakei Health Clinic Limited



**Provider Spotlight**  
**Ngāti Whātua o Ōrakei Health Clinic Limited (Ira Dot) – Phase 1**

We invested \$2.661m in the provider to deliver activity to support vaccination increase across three events in Tāmaki Makaurau; Ira dot, Ira koko, and Tau Ira.

Ira dot events were delivered in early November. Rangatahi Māori took to Tik Tok, Instagram and Facebook to encourage each other to 'get dotted' on 6-7 November, in a city-wide campaign, aimed at rangatahi between the ages of 12-34 years.

The mass 'gotyadot' hubs were located at Eden Park and four Kura Tuarua across Tāmaki Makaurau. If people couldn't make it to an event, they could also go on the Ira Dot website and click the *Plot Ya Dot* button and a mobile unit would be sent to their whare or organisation to get 'dotted'

The Ira Dot campaign deliberately did not use the terms vax, jab or shot, to remove stigma. Culturally, 'ira dot' ascribes 'whakapapa' - the foundation for inherent connectedness and interdependence to all things from our tūpuna down to us.

The initiative was backed by the Tāmaki, Tū Kotahi (Auckland, united we stand) collective of Tāmaki Iwi, Kapa Haka, Hauora Māori providers, Corporate Partners, Kura Tuarua and Whare Wānanga who wanted to get Tāmaki Makaurau dotted as quickly as possible.

**Waiariki Mentoring Trust – Phase 2**

Our investment worth \$0.553m will reduce the impact of COVID-19 for Ngāi Tokomatua (gangs) and their whānau in Whakatāne, Tokoroa, Kawerau, Rotorua, Tūrangi, Taupō, and Tauranga.

The investment includes funding to continue to increase the vaccination rate, provide isolation support, and increase resilience for Ngai Tokomatua and their whānau affected, or at risk of being affected, by COVID-19.

This provider is well-connected with gangs and gang leaders in the target region. Since November 2021 they have delivered 34 vaccination drives, resulting in over 650 members and their whānau receiving at least one vaccination. The provider is recognised as one of the few providers that have access and reach to multiple gangs in the area. They are supported by each of the three DHBs in the region – Bay of Plenty, Lakes and Waikato.

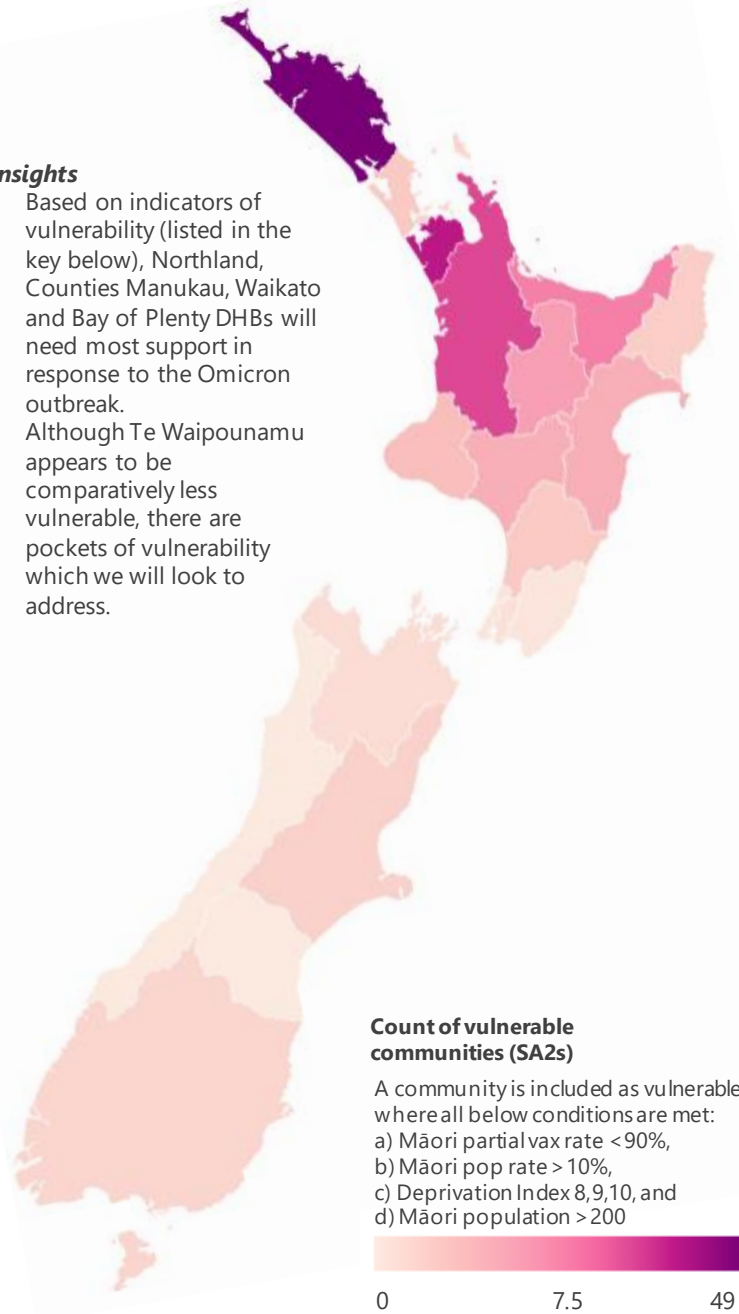
The proposal complements other activities and resources provided to the target area. Mainstream health services and vaccination uptake programmes have struggled to connect with the gang population; a gap this investment is well placed to address.

# Māori Communities COVID-19 Fund – Phases 1 & 2 – Vulnerability index and DHB investment

**Vulnerable communities by DHB Area February 15<sup>th</sup>**

**Insights**

- Based on indicators of vulnerability (listed in the key below), Northland, Counties Manukau, Waikato and Bay of Plenty DHBs will need most support in response to the Omicron outbreak.
- Although Te Waipounamu appears to be comparatively less vulnerable, there are pockets of vulnerability which we will look to address.



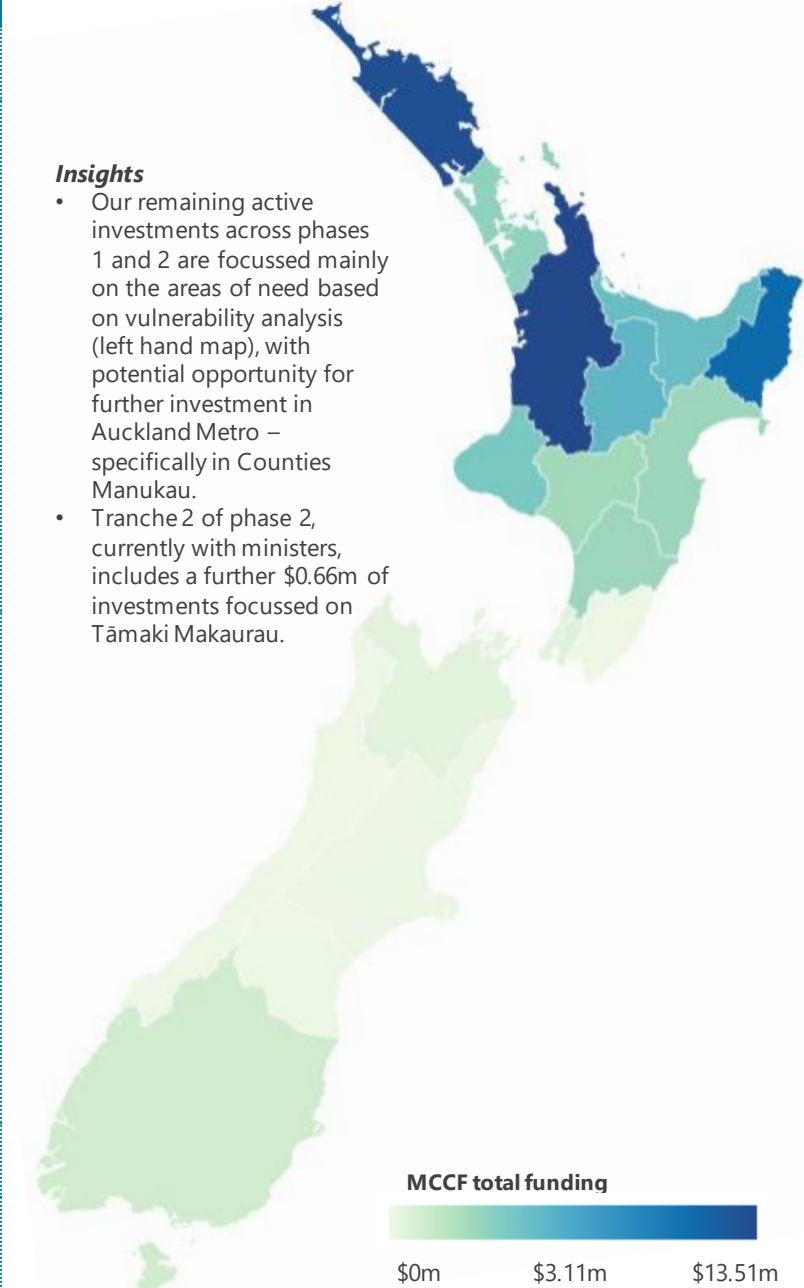
**Māori Vaccination Data and MCCF Summary Table**

DHB Area	Dose 1 / Dose 2 %	Vulnerable communities coverage*	MCCF Phase 1 Investment Approved \$m	MCCF Phase 2 Investment Approved \$m	Currently active investment \$m
Northland	86% / 81%	49 of 49	8.17	6.96	12.96
Auckland Metro	92% / 88%	52 of 53	5.35	0.00	3.56
Waikato	91% / 87%	30 of 34	15.10	0.41	13.51
Lakes	90% / 85%	19 of 19	6.49	0.20	5.64
Bay of Plenty	87% / 83%	25 of 25	3.76	2.94	4.97
Tairāwhiti	90% / 86%	7 of 7	6.84	4.84	11.05
Taranaki	91% / 86%	11 of 11	4.31	0.00	4.31
Hawkes Bay	91% / 86%	15 of 15	2.51	0.00	2.81
MidCentral	94% / 90%	8 of 8	2.72	0.36	3.08
Whanganui	87% / 83%	15 of 15	2.84	0.00	2.84
Capital and Coast	95% / 93%	0 of 1	0.93	0.00	0.45
Hutt Valley	94% / 90%	2 of 2	0.52	0.00	0.52
Wairarapa	93% / 89%	1 of 1	0.43	0.00	0.33
Nelson Marlborough	91% / 87%	3 of 3	0.54	0.00	0.40
West Coast	90% / 86%	0 of 0	0.11	0.00	0.00
Canterbury	95% / 92%	6 of 6	0.99	0.00	0.11
South Canterbury	92% / 88%	0 of 0	0.09	0.00	0.05
Southern	93% / 90%	5 of 5	1.56	0.00	1.13
National Coverage	-	-	8.82	0.00	2.62
<b>Total</b>	<b>91% / 87%</b>	<b>248 of 254</b>	<b>\$72.08m</b>	<b>\$15.71</b>	<b>\$70.33</b>

**Active MCCF investments by DHB Area February 18<sup>th</sup> (active funding only)**

**Insights**

- Our remaining active investments across phases 1 and 2 are focussed mainly on the areas of need based on vulnerability analysis (left hand map), with potential opportunity for further investment in Auckland Metro – specifically in Counties Manukau.
- Tranche 2 of phase 2, currently with ministers, includes a further \$0.66m of investments focussed on Tāmaki Makaurau.



**Notes:**

- 'Active' investments include all contracted activity yet to reach the contract end date
- Dollar figures are amounts approved or contracted through MCCF
- Auckland DHBs are aggregated
- Funding share for proposals covering multiple DHBs is based on vaccination rates, and should be considered an estimate
- Vaccination data = 28 January, rate of change since 21 January
- All vaccination rate data sourced from daily MOH updates
- 'Overseas / Unknown' included in total vaccination figures

\*this column indicates the number of vulnerable communities within each DHB area, and the number where MCCF investments are currently active.



Te Puni Kōkiri  
MINISTRY OF MĀORI DEVELOPMENT

