

Māori Communities COVID-19 Fund Phase 1 – weekly update as at January 14

Funding Progress

\$72.08m
↑ \$0m from last report

Total approved
46 proposals with 85 contracts (8 tranches)

\$71.88m
↑ \$1.39m from last report

Funding currently under contract with providers
84 contracts

\$52.29m
↑ \$3.31m from last report

Paid to providers
84 contracts

There are no further Phase 1 proposals pending approval from Ministers

Vaccination Progress (MoH data on eligible population, January 14th)

88% / 83% Total Māori first and second dose rate (88%/82%) last report 7th January

11.6k Total doses given since 7th January for Māori (including 7,124 first doses)

8.6k First doses remaining to hit 90% first dose rate for Māori

65.7k Total eligible Māori with no first doses

Weekly progress update

- Only 1 out of 85 contracts under Phase 1 remains unsigned by kaitono
- Agencies are progressing development of resilience proposals (Tranche 1 of Phase 2) with recommendations due to Ministers on 27th January

MCCF Communications weekly report

- We're refreshing messaging for Phase 2 of the Māori Communities Covid Fund for regional offices, kaitono and the relevant website pages, including the list of contracts.
- The Karawhia team, Ministry of Health and Te Hiringa Hauora – Health Promotion Agency (THH) discussed tamariki vaccinations. In a phased rollout, MoH expects around 60% of providers will offer tamariki vaccinations from 17 January, an additional 20% by the following week and the rest by the end of January. Healthpoint is working with MoH and DHBs to ensure accurate information about which providers are open and are providing booster or tamariki shots and will update the Karawhia mapping tools. Note BookMyVaccine does not allow group or whānau bookings.
- Karawhia will primarily promote the 0800-28-29-26 for whānau bookings. It will update the mapping tool and website with new information on tamariki vaccinations and booster shots as new resources become available.



The Whanganui mobile clinic set up at Aramoho Top 10 Holiday Park on 21 Dec 2021



On Wednesday 22 December 2021, the Shot Cuz Rangatahi Team promoted and held a whānau vax drive-in movie night for all whānau to attend at the Whanaanui Function Centre Racecourse carpark.



"By rangatahi for rangatahi" – is our kaupapa that supports rangatahi and their whānau to make an informed decision on the COVID-19 vaccination.



Provider Spotlight – Te Ranga Tupua

The Fund has invested \$2.8 million for Te Ranga Tupua Iwi Collective to deliver a 15-week rapid response roll out across the Whanganui, Rangitikei, Ruapehu and South Taranaki regions.

COVID response mobile units are led by experienced teams from iwi health providers, Te Oranganui Trust in Whanganui, Ngā Waihua o Paerangi Trust in the Waimarino, and Te Kōtuku Hauora Ltd and Mokāi Pātea Services who together have a team in Rangitikei.

Initiatives funded:

1. [Te Oranganui](#) – Dedicated Facebook (over 2500 followers) and Instagram platforms
2. Ngāti Rangī – rapid response mobile clinic operating in the community
3. Whānau vax drive-in movie night – organised by the 'Shot Cuz' Rangatahi Team
4. Te Kōtuku Hauora and Mōkai Pātea (Rangitikei) – Promotion campaign on upcoming mobile, static and pop-up clinics for January 2022

As well as these initiatives, funding also enabled the purchase of assets including a van, generators, and PPE.

Te Kōtuku Hauora and Mōkai Pātea (Rangitikei) have been posting and promoting their mobile, static, and pop-up vaccination clinics dates over January.

#COVID19VACCINE
#KARAWHIUA

PROTECT AGAINST COVID-19 MOBILE VACCINATION CLINICS 10 - 15 JANUARY 2022

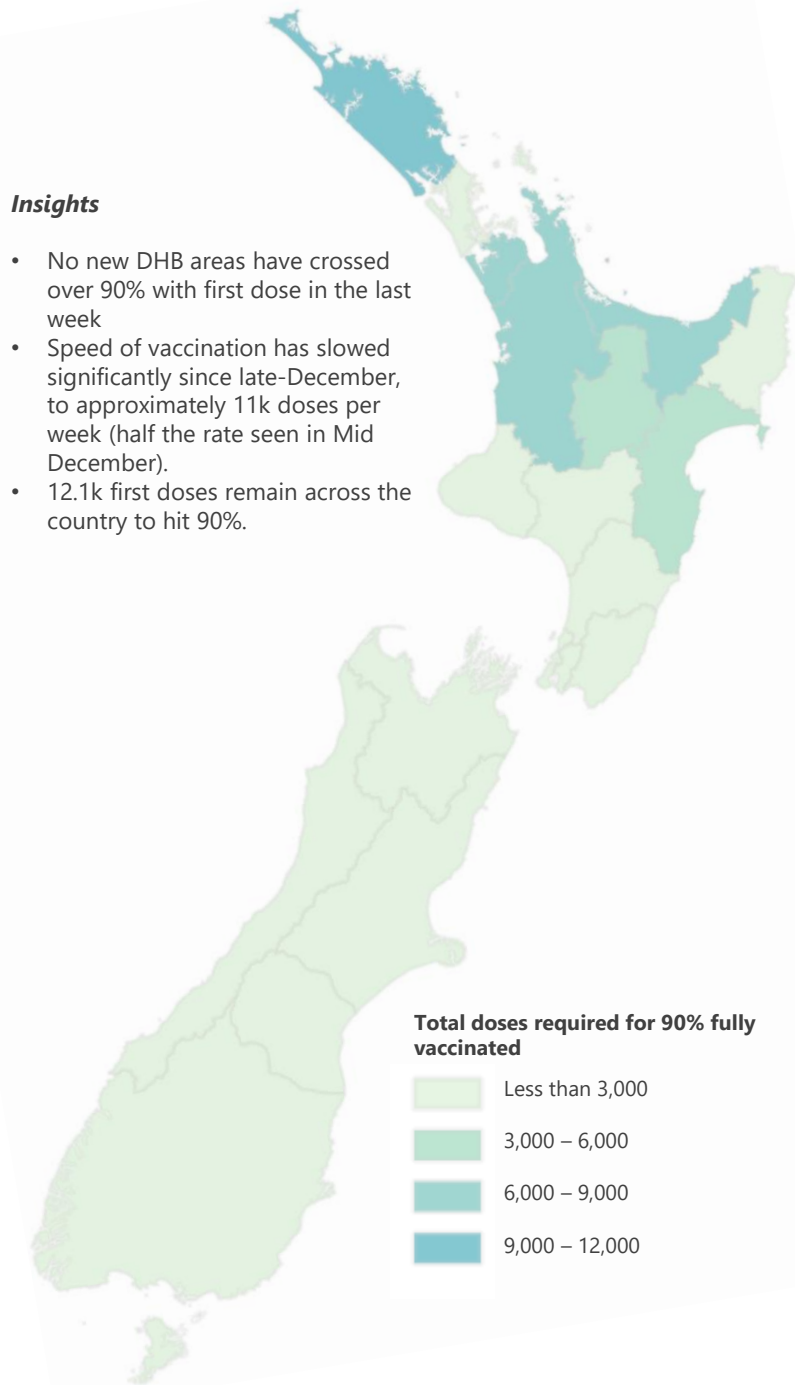


10 JANUARY	PŪTIKI , Corner of Pūtiki Dr & Kemp St (Bus Stop)	10.00am - 2.00pm
	WHANGANUI EAST , Eastown Rd, Across from Wilkie St	3.00pm - 7.00pm
11 JANUARY	ARAMOHO , Aramoho Shopping Centre, Somme Prd	3.00pm - 7.00pm
12 JANUARY	GONVILLE , Carlton Ave, Park between Hadley & Anson St	9.00am - 1.00pm
	LAIRD PARK , Netball Courts Carpark	3.00pm - 6.00pm
13 JANUARY	HOME VISITS , Call 0800 202 004 to book	9.00am - 5.00pm
14 JANUARY	SPRINGVALE , Jubilee Stadium Carpark	9.00am - 12.00pm
	CASTLECLIFF , Castlecliff Beach, Rangiora St	3.00pm - 6.00pm
15 JANUARY	KAI IWI , Kai Iwi Marae	10.00am - 12.00pm
	WAITOTARA , Waipapa Marae	1.00pm - 2.00pm



Māori Communities COVID-19 Fund Phase 1 – Vaccine rate and DHB investment

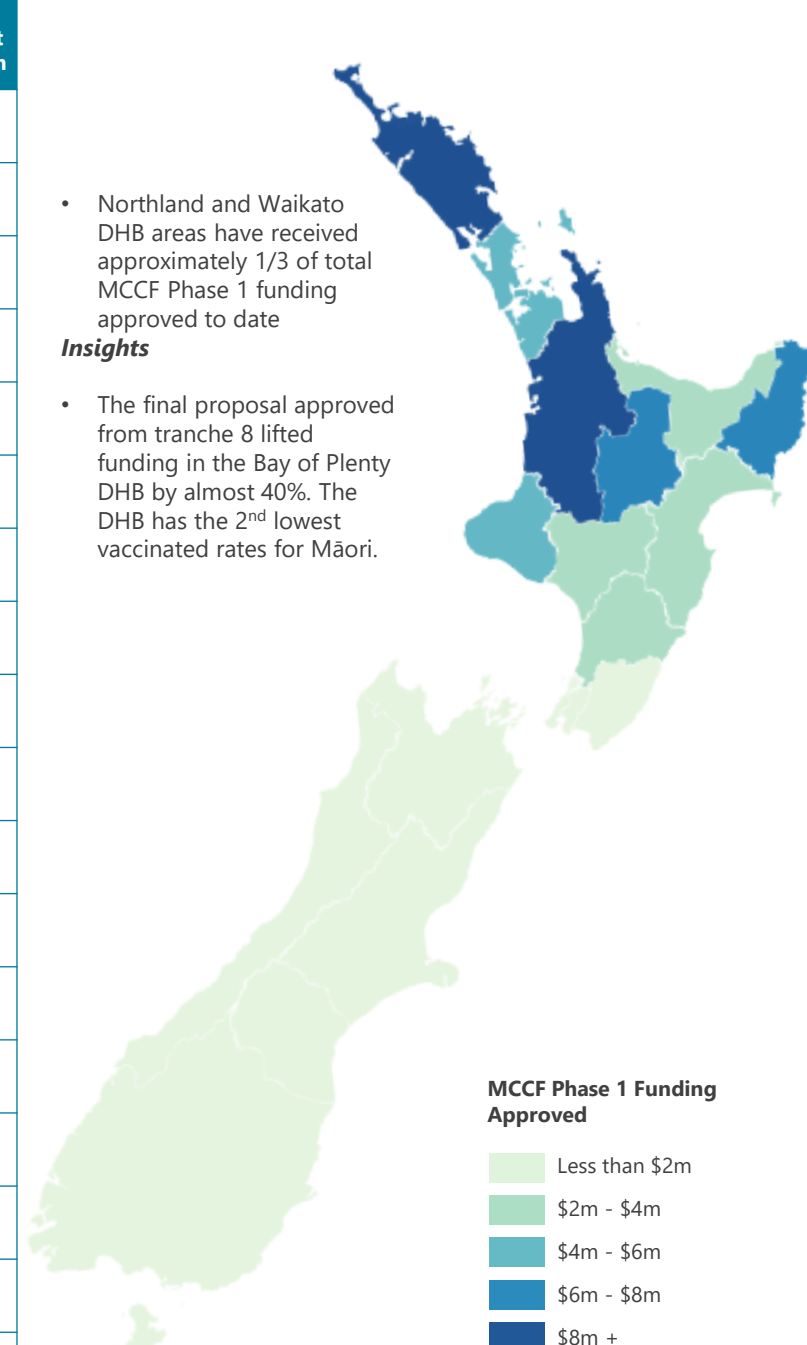
Total doses required to hit 90% Māori fully vaccinated as at January 7th



Māori Vaccination Data and MCCF Summary Table

DHB Area	Dose 1 / Dose 2 %	Total Doses Needed for 90 2 Dose%	Total doses since last report (Dec 17)*	Doses since MCCF open (Oct 24)*	MCCF Phase 1 Investment Approved \$m
Northland	84% / 78%	9,283	1,018	26,673	8.17
Auckland Metro	89% / 85%	7,682	2062	61,066	5.35
Waikato	88% / 82%	6,338	6,338	38,062	15.10
Lakes	87% / 81%	3,672	3,672	18,700	6.49
Bay of Plenty	85% / 78%	7,889	7,889	28,874	3.76
Tairāwhiti	88% / 82%	1,958	1,958	11,528	6.84
Taranaki	88% / 82%	1,649	1,649	9,958	4.31
Hawkes Bay	88% / 81%	3,563	3,563	20,306	2.51
MidCentral	92% / 86%	1,046	1,046	14,613	2.72
Whanganui	85% / 79%	2,198	2,198	7,351	2.84
Capital and Coast	94% / 90%	0	0	12,712	0.93
Hutt Valley	92% / 87%	669	669	10,887	0.52
Wairarapa	91% / 86%	281	281	3,958	0.43
Nelson Marlborough	89% / 83%	873	873	6,072	0.54
West Coast	88% / 83%	266	266	1,472	0.11
Canterbury	93% / 88%	599	599	22,328	0.99
South Canterbury	89% / 83%	275	275	1,887	0.09
Southern	91% / 87%	780	780	11,911	1.56
National Coverage					8.82
Total	88% / 83%	48,962	11,645	308,650	\$72.08m

MCCF Phase 1 Approved Investments by DHB Area January 7th



Notes:

- Dollar figures are amounts approved or contracted through MCCF
- Auckland DHBs are aggregated
- Funding share for proposals covering multiple DHBs is based on vaccination rates, and should be considered an estimate
- Vaccination data = 14 January, rate of change since 17 December
- All vaccination rate data sourced from daily MOH updates
- 'Overseas / Unknown' included in total vaccination figures
- Total dose figures include those overseas / unknown residence

*doses delivered by DHB areas are based on MOH data, and are not specifically linked to MCCF funding



Te Puni Kōkiri
MINISTRY OF MĀORI DEVELOPMENT

