

HE TIROHANGA MĀORI

Māori Feedback/Reflections on Treasury's Living Standards Framework

Atawhai Tibble: Ngāti Porou, Tuwharetoa, Raukawa
Principal Advisor, Māori Living Standards, Treasury
Secondee, Social Investment Unit

Debono's 6 Hats



**Data, facts,
Info**



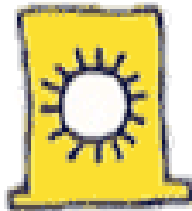
**Creativity,
Opportunity,
Solutions**



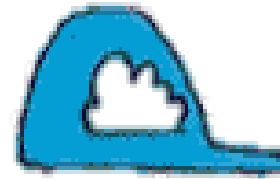
**Issues, Risks,
Problems**



**Feelings,
Hunches**

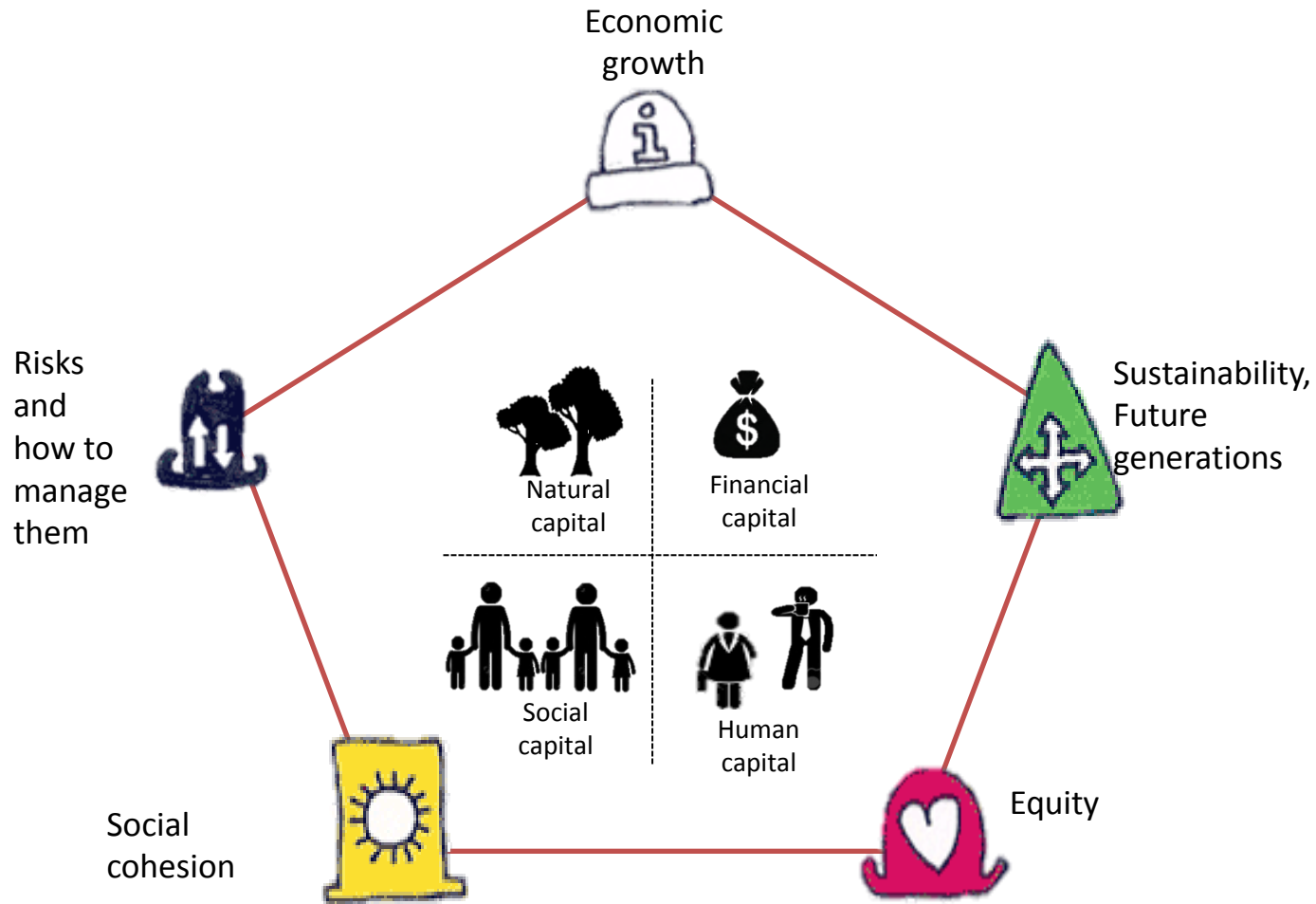


**Benefits,
Opportunities,
Value**



**Process, Next
steps, Actions**

Treasury's Living Standards Framework



At the core : 4 capitals

NATURAL CAPITAL

- ▶ Extracted resources eg, oil and gas
- ▶ Renewal resources, eg, like water and fish
- ▶ Environmental services eg, climate, breathable air and soil



Natural capital

FINANCIAL AND PHYSICAL CAPITAL

- ▶ Individual assets eg, homes, cars, factories and machinery
- ▶ Community assets eg, roads and hospitals
- ▶ Financial assets that could buy these things



Financial capital

SOCIAL CAPITAL

- ▶ The cultural, philosophical and ethical norms of society
- ▶ The social and political institutions that organise society eg, laws, expectations
- ▶ The way people interact, eg, whether they trust each other



Social capital



Human capital

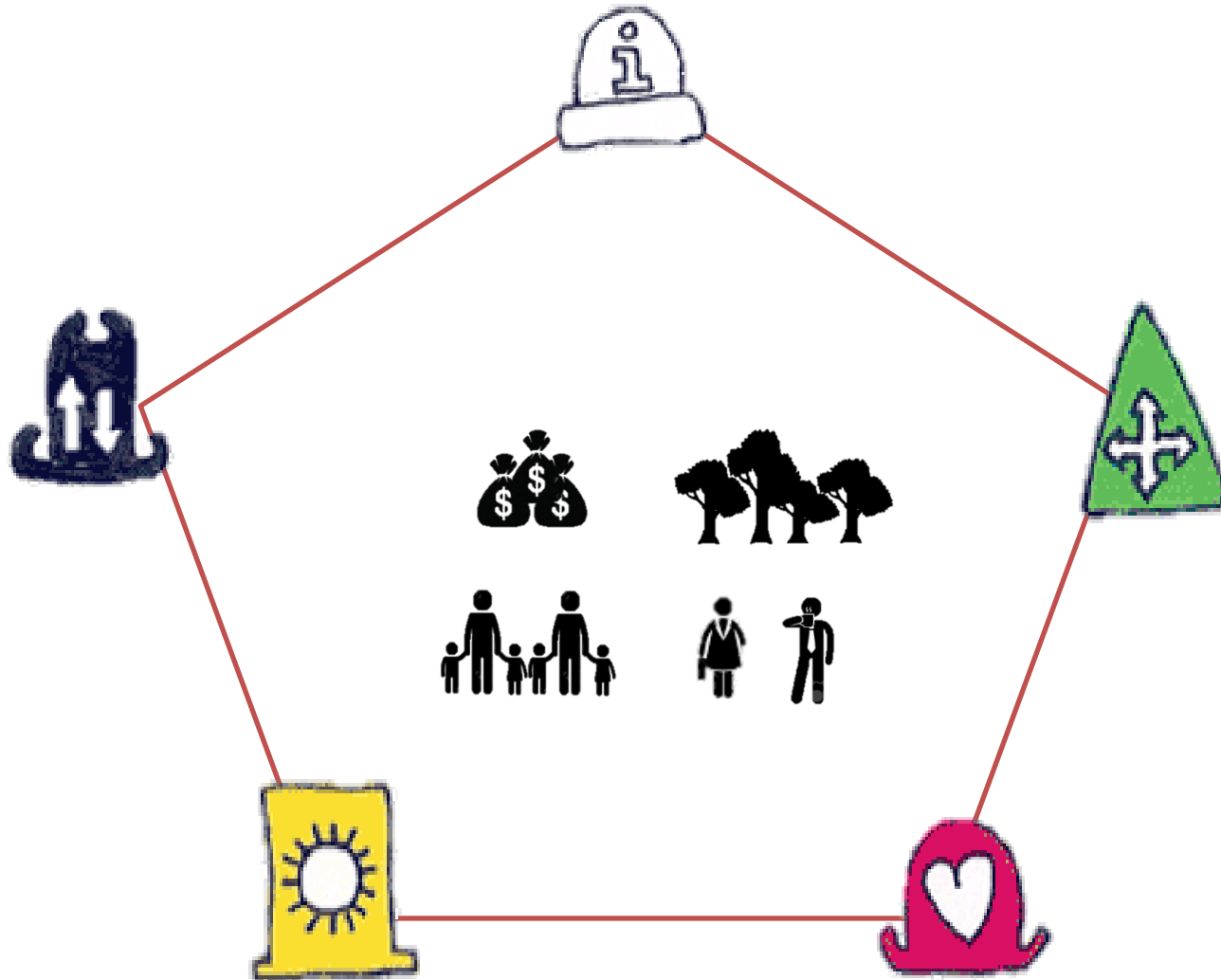
HUMAN CAPITAL

- ▶ The stock of skills and qualifications that people have
- ▶ The level of health
- ▶ The systems used to organise people to create value

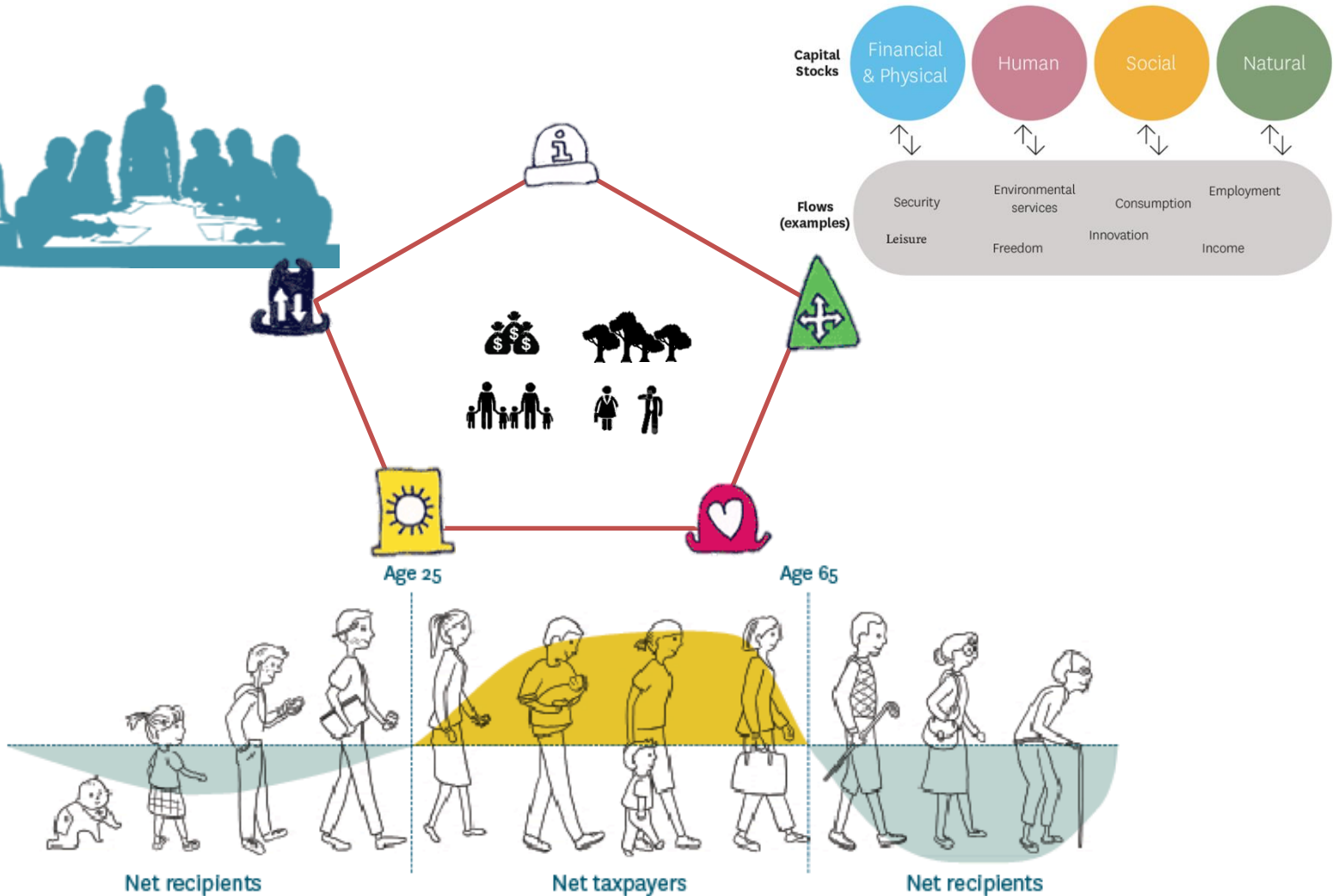
On the corners – Key concepts



How to use it?



How has this been used?



Māori Feedback



Feedback 1

“Treasury is taking a holistic look at issues! Really?”

“About time! That’s how we roll...”

“Where are we in this?”

“We focus on different things...and ask different questions...”

Feedback 2

“Culture is a key capital!”

v

“Culture is in everything.”

“Where is the Treaty?”

Feedback 3



Ruapehu Whanau Transformation Framework

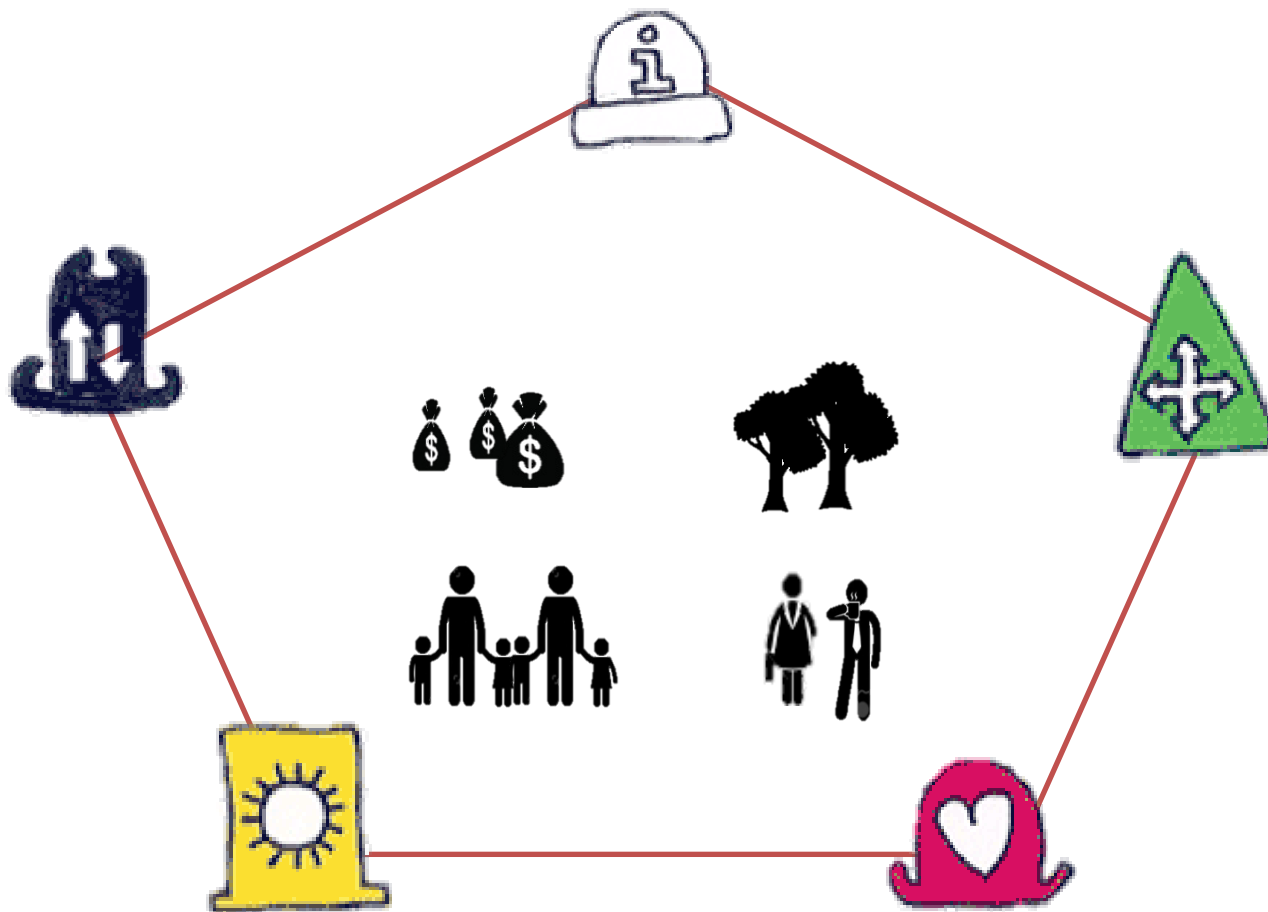


Ngati Porou Outcome Measurement Framework

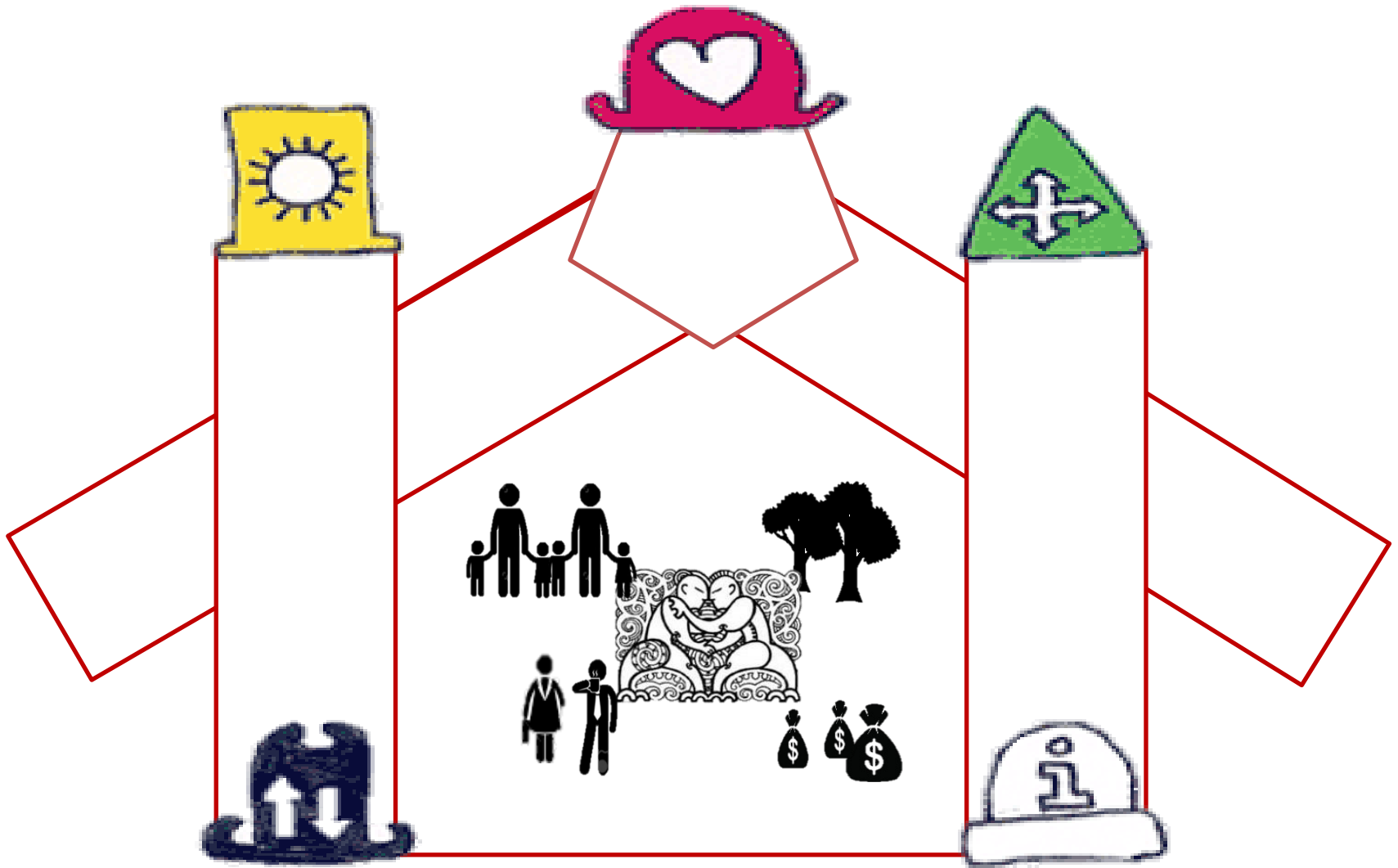


Waikato-Tainui - Ngaa Tohu

Treasury's Living Standards Framework: Current Model



He Tirohanga Māori: A Model



If you have any feedback, please come and speak to me after this, or Imeerahia mai:

atawhai.tibble@treasury.govt.nz

MAURIORA KI A KOUTOU