

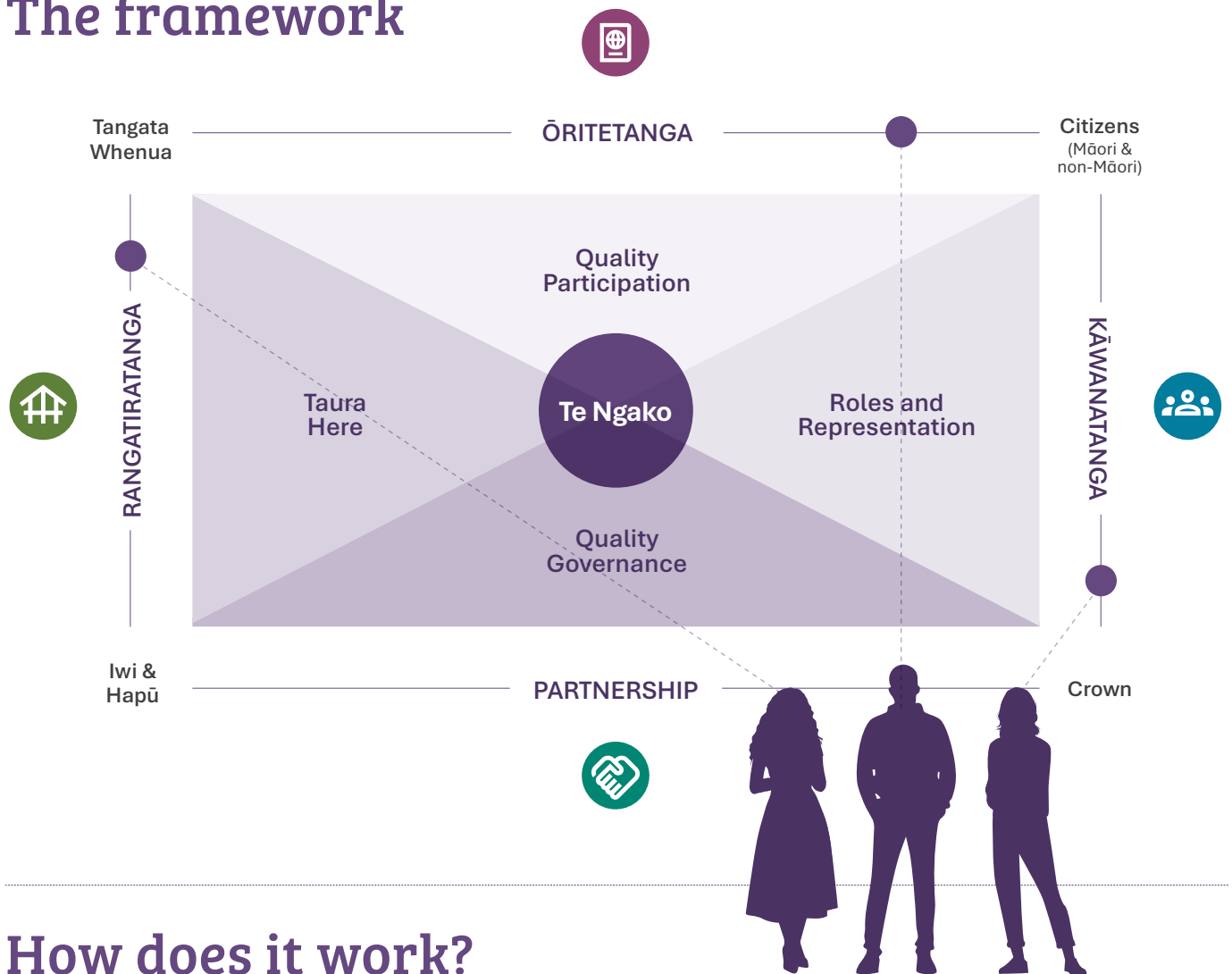
# Te Tautuhi ō Rongo | The framework

To listen, consider, and analyse deliberately before speaking, writing, and advising

## Purpose

To provide a structured approach for considering rights, interests, and responsibilities of whānau, hapū and Iwi as tangata whenua and Māori as citizens, in alignment with the Crown's obligations under Te Tiriti o Waitangi | the Treaty of Waitangi.

## The framework



## How does it work?

| Step 1                               | Step 2   | Step 3                | Step 4                         |
|--------------------------------------|--|-----------------------|--------------------------------|
| Locate yourself within the framework | Identify and locate the matter to be addressed | Locate those impacted | Identify the desired outcome/s |

# Te Ngako | the desired outcome

Meaning the essence. This is where all four of the elements intersect.  
It can be described as the desired outcome.

## The axes

### Ōritetanga axis

This axis acknowledges Māori as tangata whenua; the signing the Treaty established the concept of 'citizenship'. It focuses on the distinct roles and representation of Māori as both citizens and as tangata whenua. It outlines the Crown's obligations to all citizens, enabling quality governance and participation.



### Kāwanatanga axis

The governing of Aotearoa New Zealand. It represents the Crown's role within the framework. It also represents the relationship between the Government and all Citizens of Aotearoa New Zealand and their rights, interests and responsibilities.



### Partnership axis

This axis recognises that 'Treaty Partnership' is between the government and rangatira of hapū and Iwi where parties act reasonably, honourably and in good faith.



### Rangatiratanga axis

This axis represents where whānau, hapū and Iwi as tangata whenua sit. It relates to self-determination, autonomy and self-management, acknowledging and recognising collective interests.



## The elements

### Quality Participation

This element focuses on understanding personal and individual-based rights and interests; promoting equality of opportunity between Māori and non-Māori.

### Roles and Representation

This element recognises the distinct roles and associated rights, interests and responsibilities that can apply to a single person or be dispersed between collectives.

### Quality Governance

This element reflects a high-level relationship that provides for partnership arrangements between whānau, hapū, Iwi and the Crown.

### Taura Here

This element focuses on Māori kinship and whakapapa connections as groupings of whānau, hapū, and Iwi and their collective rights and responsibilities.

