



## MĀORI LANGUAGE ADVISORY GROUP MEMBERS

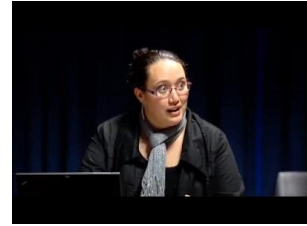
|   |  |
|---|--|
|  | <p>Professor Rawinia Higgins (<i>Ngāi Tūhoe</i>)<br/>Chair of the Māori Language Advisory Group</p> <p>Dr Rawinia Higgins has a strong background working in the Māori language tertiary education sector. She is currently the Professor of Te Kawa a Māui, School of Māori Studies and Assistant Vice Chancellor Māori Research at Victoria University of Wellington. Alongside Associate Professor Poia Rewi, they are the Co-Principal Investigators of Te Kura Roa, a 3-year Māori language research initiative funded by Ngā Pae o te Māramatanga that examines the value of the Māori language. This research programme examines both state and community responsiveness to Māori language revitalisation efforts in Aotearoa New Zealand. She leads the community project, Whaihua, in collaboration with Te Ataarangi and Te Kōhanga Reo. She is on the Board member of Te Māngai Pāho and a member of the Waitangi Tribunal. Prof Higgins has lectured at the University of Otago and Victoria University of Wellington.</p> |
|---|--|

|  |   |
|--|---|
| <p>Dr Te Wharehuia Milroy, QSO, CNZM (<i>Ngāi Tūhoe</i>)</p> <p>Dr Te Wharehuia Milroy is a distinguished exponent of te reo Māori who has devoted his career to Māori language education, Māori language revitalisation, and te kounga o te reo. He is a Director of Te Panekiretanga o te Reo Māori (Institute of Excellence in the Māori Language) alongside Tīmoti Kāretu and Professor Pou Temara. He is also one of the three New Zealand Fellows of the International Centre for Language Revitalisation (Te Ipukarea). Dr Milroy was a Professor of Māori at the University of Waikato from 1993 to 2000, as well as an examiner of Master and PhD theses in English and te reo Māori.</p> |  |
|--|---|

|   |  |
|---|--|
|  | <p>Dr Ruakere Hond (<i>Taranaki, Ngāti Ruanui</i>)</p> <p>Dr Ruakere Hond is highly renowned for his long time leadership, teaching and dedication to Te Reo o Taranaki and the Te Ataarangi movement. He was instrumental in the development and implementation of the Taranaki Māori Language Strategy. He has also served on the Board of Te Taura Whiri i te Reo Māori. He has a Master of Arts from Te Whare Wānanga o Awanuiārangi, and graduated with his PhD from Massey University in 2014 for his research based on language revitalisation and its impact on wellbeing.</p> |
|---|--|

Charisma Rangipunga (*Ngāi Tahu, Ngāti Kahungunu*)

Ms Charisma Rangipunga is currently the General Manager of Te Taumatua at Te Rūnanga o Ngāi Tahu. She has played a leading role for many years in the development and implementation of the Ngāi Tahu Māori language revitalisation strategy Kōtahi Mano Kāika, Kōtahi Mano Wawata, and her role now oversees the implementation of the wider Ngāi Tahu Cultural Revitalisation Strategy. Charisma is the Kaihautū of Ake Associates Limited – a consultancy company specialising in Māori language, project management, resource development and design. She has also authored books and publications with a focus on Ngāi Tahu tribal stories and histories for whānau and tamariki.



Charlie Tepana (*Raukawa, Ngāpuhi*)




Mr Charlie Tepana is a graduate of Te Panekiretanga o te Reo Māori and currently works as the Manager of Cultural Development at the Raukawa Settlement Trust in Tokoroa. Charlie was part of an advisory group that were responsible for providing key advice for the development of the Raukawa Language Revitalisation Strategy, 'Whakareia te Kakara o te Hinu Raukawa'. Through his role at Raukawa Settlement Trust, Charlie has progressed the implementation of this strategy. He is recognised for his commitment to te reo Māori and his contribution to local level Māori language revitalisation for the community of Tokoroa and his Raukawa iwi.

#### MĀORI LANGUAGE ADVISORY GROUP – EX-OFFICIO MEMBERS

Michelle Hippolite, CEO Te Puni Kōkiri



|   |   |
|---|---|
|  | <p>John Bishara, CEO Te Māngai Pāho</p> |
|---|---|

|   |  |
|---|--|
| <p>Dr Poia Rewi, Acting CEO<br/>Te Taura Whiri i te Reo Māori</p> |  |
|---|--|