

# Te Ritorito 2017: Whānau data and measuring whānau wellbeing

3 April 2017

Liz MacPherson, Government Statistician

 @GovStatistician

@Stats\_NZ

## Our role

**Strategic  
Vision**

**System  
Design**

**Assurance**

**Capability,  
Building  
& Support**

**Tools &  
Enablers**

# Te Kupenga

## Ngā puna kōrero: Where Māori speak te reo

55% of Māori adults can kōrero Māori\*

\*People of Māori ethnicity aged 15 years and over who can speak te reo Māori 'very well', 'well', 'fairly well', or 'not very well'



**50,000** can speak it 'very well' or 'well'

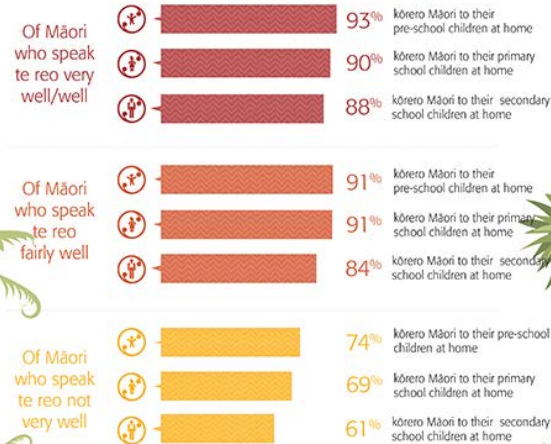


**56,500** can speak it 'fairly well'



**151,000** speak it 'not very well'

64% of te reo speakers kōrero Māori to someone they live with ...and are most likely to speak te reo to their kids



67% of te reo speakers use the language outside the home.

New Zealand Government

**census**  
Stats **NZ**

The census  
test is  
coming to  
Whanganui.

Let's  
find out.

[newzealand.govt.nz](http://newzealand.govt.nz)

**census**  
Stats **NZ**

Doing the  
census test  
online is easy,  
but paper  
still works.

The census test is online, but we know some people don't have access to the internet – or simply prefer to complete a paper form.

If so, just call **0800 CENSUS** and request your paper form, and we'll send one out to you.

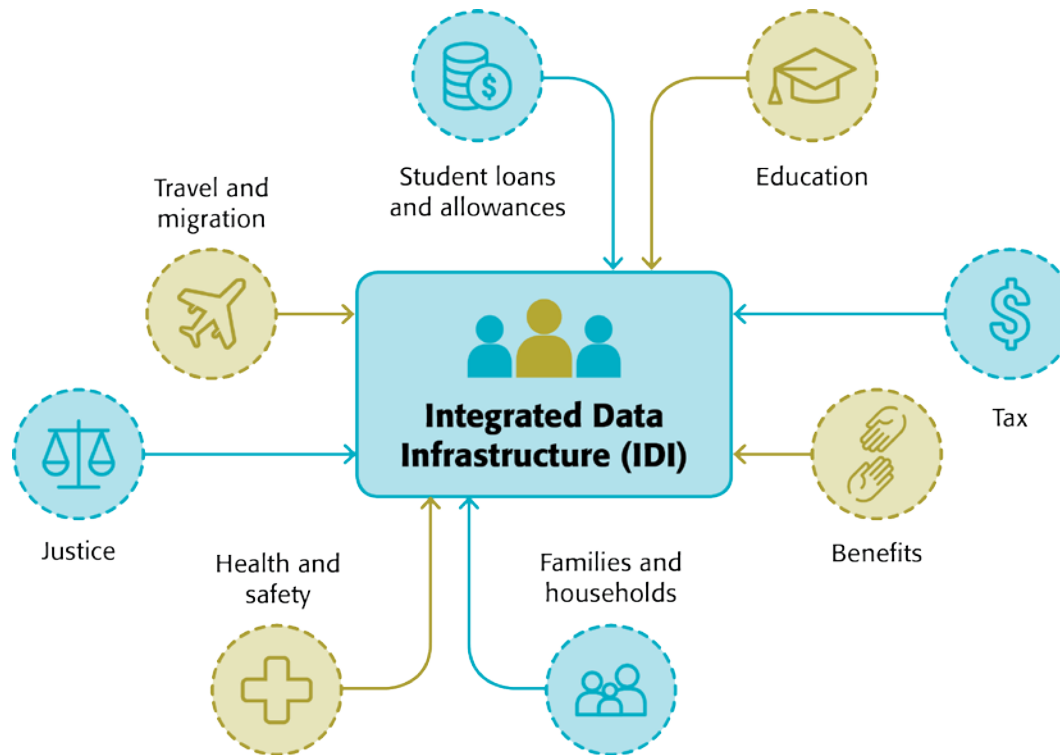
*Find out more at [census.govt.nz](http://census.govt.nz)*

*Lost your code? Call us to get a new one.*

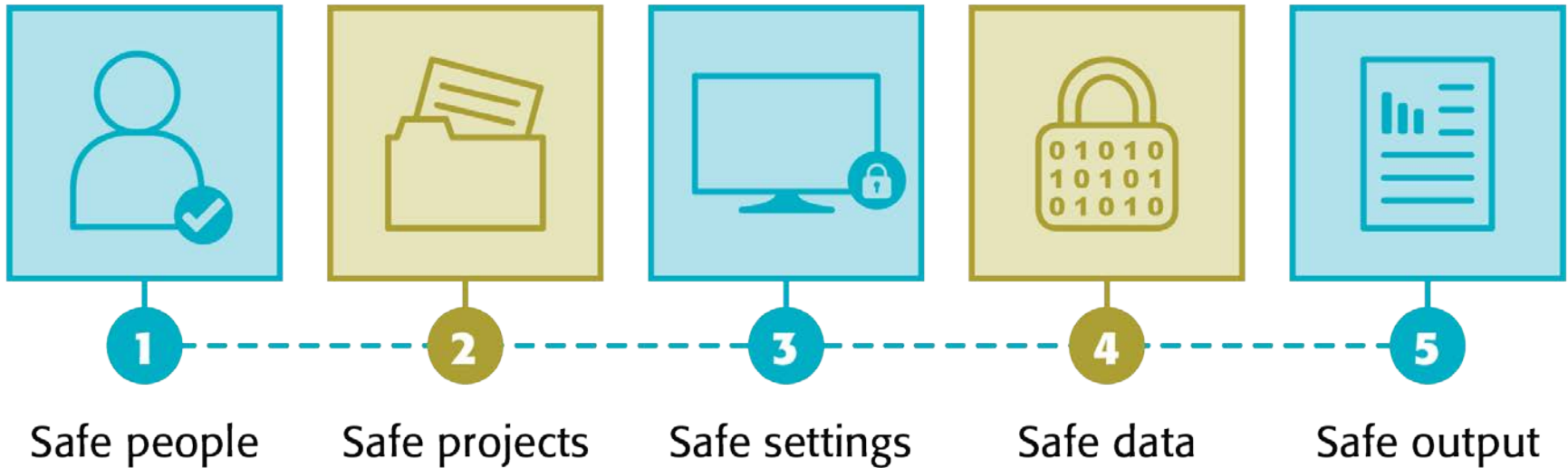
Let's  
find out.



# Integrated Data Infrastructure (IDI)



# The Five Safes



# Iwi Standard





<https://www.youtube.com/watch?v=Bry-D7r6ZB4>