

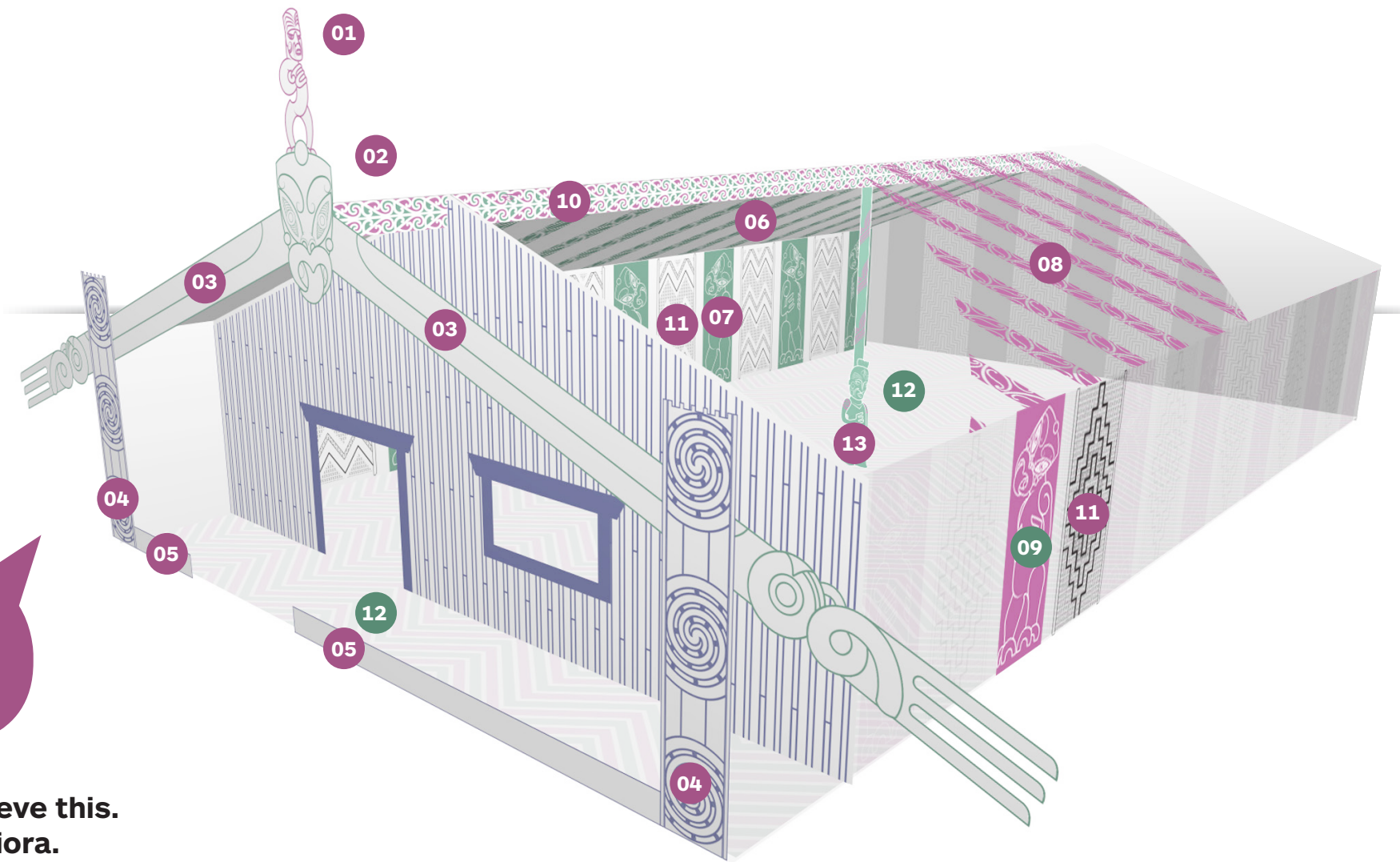
Te Whare o te Reo Mauriora

The purpose of the **Māori Language (te reo Māori) Bill** should be to:

1. Establish clear direction and strategies for te reo Māori.
2. Create opportunities for Māori to determine and drive outcomes for te reo.
3. Clarify the roles and functions of both Māori and Crown in respect to te reo Māori.
4. Encourage and support greater collaboration through agreed values and principles.

The Minister for Māori Development is reviewing the current Māori Language (te reo Māori) Bill to help ensure the future of te reo Māori.

**A house is used to describe the new proposed structure to achieve this.
Nau mai, hara mai ki te whare o te reo Māori, he whare reo Mauriora.**



01 Tekoteko

The Māori Language Act – a guardian for the language and helps safeguard our aspirations for te reo Māori.

02 Koruru

the overarching vision for a reo Māori strategy to which both Māori and the Crown have specific roles.

03 Maihi

Māori and the Crown strategies that will be developed to support the overarching vision for te reo.

04 Amo

The focus areas of the partnership model. Māori will focus on communities and homes. The Crown will focus on support at the larger public or society level.

05 Paepae

Symbolize all peoples of Aotearoa both Māori and non-Māori who are critical to achieve our aspirations for te reo.

06 Heke Taraiti – Te Mātāwai

Te Mātāwai is a new statutory entity being proposed to allow Māori to determine and drive outcomes for te reo.

07 Poupou Taraiti

represent the different groups that Te Mātāwai are drawn from: Seven of members elected from Iwi. Four will be from Māori language stakeholder groups Up to two further positions will be available for Te Mātāwai to co-opt people with important skills and attributes required in the Board.

08 Heke Taranui

Represents Crown Ministers with a responsibility to te reo.

09 Poupou Taranui

These are the various Crown entities and departments i.e. TTW, TMP, MTS, C&H, MOE DIA, MoH, MBIE, MPI etc.

10 The Tāhuhu

Where Te Mātāwai and Ministers come together to collaborate and plan. The role of Te Rūnanga Reo is to develop and support strategic approaches for te reo Māori and monitor outcomes against those strategies.

11 Tukutuku

Located both sides of the whare between the poupou. They represent the various Statements of Intent, and annual workplans of the Crown and the office of Te Mātāwai in relation to te reo

12 Te Papa Kōrero

The Interface between the CEO of Te Mātāwai and CEO's of Government agencies – this forum encourages greater alignment and collaboration between these groups to achieve joint reo outcomes.

13 Poutokomanawa

Te reo Māori.



This whare represents a partnership model, where there are two sides.

- A. Te Taraiti - the left side of the whare represents iwi, hapū, whānau and communities
- B. Te Taranui - the right side of the whare represents the Crown.

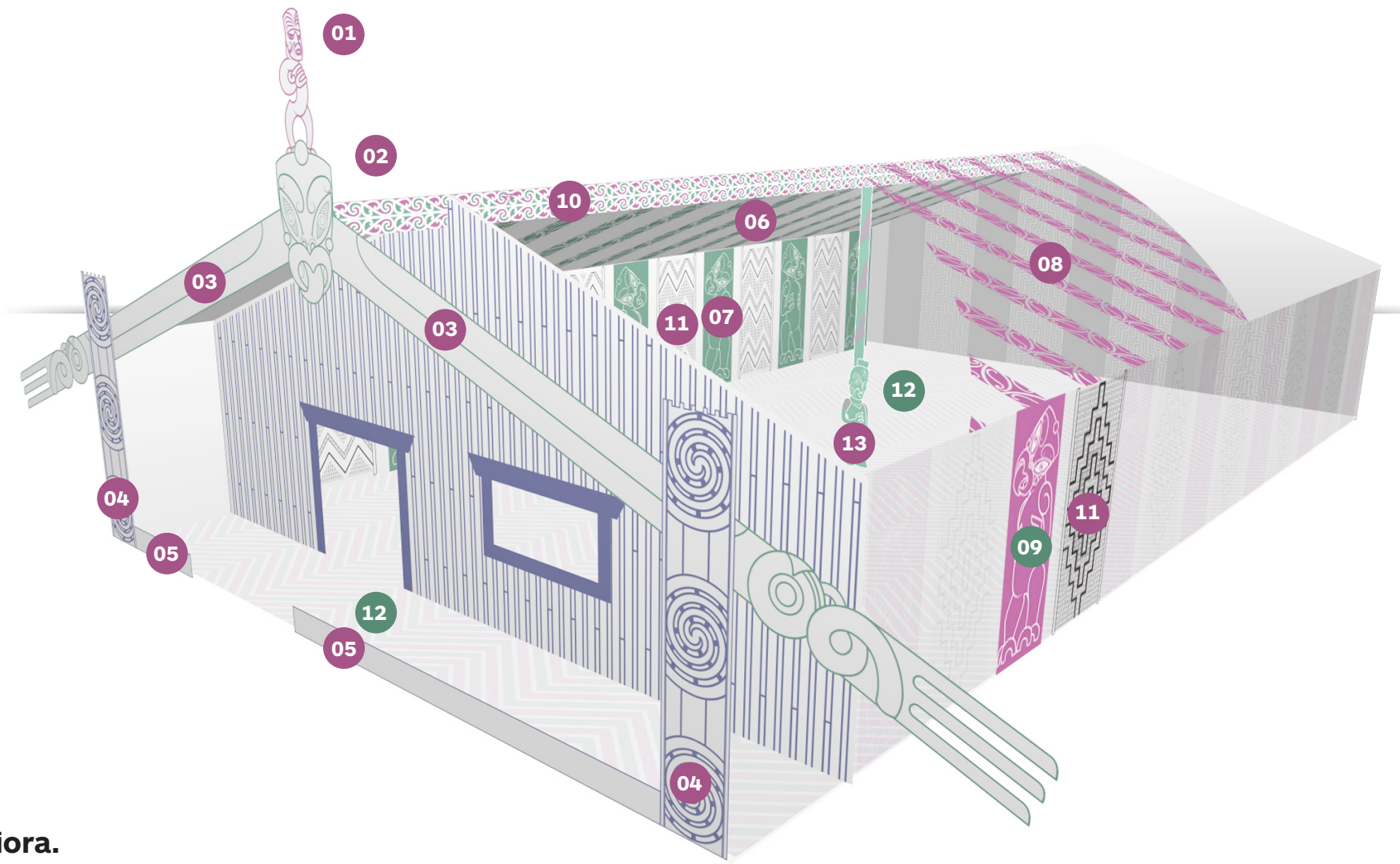
Te Whare o te Reo Mauriora

Ko te take o te **Pire Reo Māori** nei kia:

1. Mārama te ara rautaki whakamua mō te reo Māori.
2. Huhua ngā mea angitu mō te Māori hei kōkiri whāinga mō te reo.
3. Mārama tā te iwi Māori me tā te Karauna mahi mō te reo Māori.
4. Whakahau kia tautoko hoki i te mahi ngātahi.

Kei te arotake te Minita Whanaketanga Māori i te Pire Reo Māori ināianei kia ora tonu ai te reo Māori, kia kore e ngaro.

Ka kīia tēnei ahunga hou ko Te Whare o te Reo Mauriora. Nau mai, hara mai ki te whare o te reo Māori, he whare reo Mauriora.



01 Tekoteko

Ko Te Ture Reo Māori – hei tekoteko kaitiaki mō te reo e tiaki ana hoki i ō tātou tūmanako mō te reo.

02 Koruru

Ko te tirohanga matua mō te reo Māori tēnei, ka tautokona, ka tino whāia e te Rautaki Māori me te Rautaki Karauna.

03 Maihi

Ko ngā Rautaki Reo ēnei, ko tētahi mā te iwi Māori, ā ko tētahi mā te Karauna, e whakairo hei iringa mō te koruru o te whare reo mauriora nei.

04 Amo

E rua ngā amo kotahi ko te iwi Māori, kotahi ko te Karauna. Ka aronui te amo Māori ki te hāpori me te kāinga. Ka aronui kē te amo Karauna ki te motu whānui ki te marea whānui.

05 Paepae

Ko ngā tāngata katoa ēnei o Aotearoa, Māori mai, Pākehā mai, e tapatahi ai hei whakatutuki i ō tātou tūmanako mō te reo.

06 Heke Taraiti – Te Mātāwai

Ko Te Mātāwai he rōpū hou e whakamanahia e te ture hei rōpū kōkiri mō te iwi Māori i ngā kaupapa mauriora mō te reo Māori.

07 Poupou Taraiti

Ko ngā rōpū katoa ēnei e ahu mai ai ngā mema mō Te Mātāwai. Ka ahu mai ēnei mema i ngā iwi Māori, i ngā rōpū reo Māori, ā, i te hunga tika hoki e whai pukenga ana.

08 Heke Taranui

Ko ngā Minita Karauna ēnei e whai kawenga ana mō te reo Māori.

09 Poupou Taranui

Ko ngā tari Karauna ēnei e whai kawenga ana mō te reo Māori pēnei i TTWh, TMP, MTS, MCH, MoE, DIA, MoH, MBIE, MPI, arā atu anō.

10 The Tāhuhu

Ko te huinga tēnei o Te Mātāwai me ngā Minita hei wānanga hei rautaki. Ka kīia ko Te Rūnanga Reo tēnei ko tāna mahi he rautaki ara mō te reo Māori kātahi ka arotake hoki i te whai hua o aua rautaki rā.

11 Tukutuku

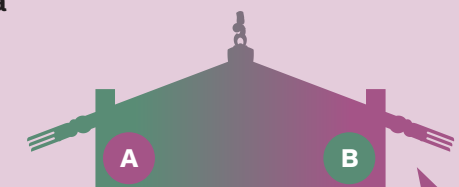
Kei ngā taha e rua o te whare kei waenga i ngā poupou. E whakaatu ana i ngā tini Tauākī Kōrero me ngā rautaki mahi ā-tau a te Karauna me Te Mātāwai, mō te reo Māori.

12 Te Papa Kōrero

Ko te papa e whitiwhiti kōrero ai te Tumuaki o Te Mātāwai me ngā Tumuaki o ngā tari Kāwanatanga - mā te papa kōrero hoki e haumi ai ngā mahi katoa kia tutuki ai ngā whāinga ngātahitanga mō te reo Māori.

13 Poutokomanawa

Ko te reo Māori.



Ko te hanga o te whare nei he taurira o te mahi ngātahi, e rua ōna taha.

- A. Te Taraiti - ko te taha mauī, te taha whānau, hapū, iwi.
- B. Te Taranui - ko te taha matau, te taha Karauna.